



Lot No. 1

Slot Cars A Group Of 3 - (1) Carrera Ford Mustang GT 350 - Red with white stripes and racing No.236, (2) Hemi 500 - Black and (3) Vanquish MG - Shadow MKII - Black and white with racing No.101 - conditions are Good Plus to Excellent in Fair to Good Plus rigid cases (3)

Estimate: £40-50



Lot No. 2

Scalextric Slot Cars A Group Of 11 To Include - Ford Escort MK3, Mini Rally Car, Ford Mondeo, Ferrari F40 Plus others - conditions are Fair to Good Plus some bright examples (11)

Estimate: £60-70



Lot No. 3

Scalextric Slot Cars A Group Of 11 Racing Cars To Include - Ferrari F1, Vintage Bentley, Porsche 956, Vanwall plus others - conditions are Good to Excellent (11)

Estimate: £70-80



Lot No. 4

Scalextric Slot Cars A Group Of 6 To Include - C134 Renault - Yellow, C135 Elf Tyrrell - Blue and white - conditions are Good Plus in Good rigid cases and 4 X Unboxed Combination Motorcycle - See-Photo - Conditions are Good to good Plus (missing one head))

Estimate: £40-50



Lot No. 5

Scalextric Slot Cars A Group Of To Include - 5 X Twin Packs - Stock Cars, Mini's, 2 X F1, Racing Motorcycles and single Mini - conditions are Good Plus to Excellent in Poor to Good Plus packing and 5 X Unboxed including Porsche Boxster - conditions are Good Plus to Excellent

Estimate: £70-80



Lot No. 6

Scalextric Slot Cars A Large Group Of Accessories To Include - Barriers, Hand Throttles, Flags, Track, Stop Start Plus much more - conditions are Fair to Excellent See-Photos (large quantity)

Estimate: £50-60



Lot No. 7

Scalextric Slot Car Set C2189A "Alan Mann Racing" 2-Piece To Include - (1) Ford Escort and (2) Ford Lotus Cortina - Both finished in Red and gold See-Photo - conditions a Mint in a Near Mint presentation box with outer transit carton

Estimate: £90-110



Lot No. 8

Scalextric Slot Cars Ford Escort Mk1 A Group Of 3 - (1) C3440 - White and black, (2) RS2000 - White and blue, (3) C2757 RS1600 - Brown - conditions are Excellent to Near Mint in Excellent Plus rigid cases (3)

Estimate: £60-70



Lot No. 9

Scalextric Slot Cars Ford Escort Mk1 A Group Of 3 - (1) 3313 "London-Mexico" - White and red, (2) C2966 RS1600 - Yellow and black, (3) C2920 RS1600 - Dark Bronze - conditions are Excellent to Near Mint in Near Mint rigid cases (3)

Estimate: £60-70



Lot No. 10

Scalextric Slot Car C2913 Ford Lotus Cortina - Off white with green side flashes, racing No.11 - Near Mint in a Excellent rigid case

Estimate: £25-30



Lot No. 11

Scalextric (SCX) Slot Cars Ford Escort MKII A Group Of 3 - (1) 64320 "Daily Express" - White body, (2) 63550 Eaton Yale - Blue body and (3) 62800 "Cossack" - Red body - conditions are Excellent to Near Mint including rigid cases (3)

Estimate: £60-70



Lot No. 12

Scalextric (SCX) Slot Cars A Group Of 3 - (1) 61200 "Drift Effect" - Hyundai, (2) 62590 Renault Alpine - Blue body and (3) 62530 Fiat 124 Spyder - Blue and yellow body -conditions are Excellent to Near Mint including rigid cases (small crack on one) - (3)

Estimate: £60-70



Lot No. 13

Scalextric (SCX) Slot Cars A Group Of 3 - (1) 61040 Citroen Xsara "Rain Effect" - Red and white, (2) 61470 Ford Focus "Rallye Monte Carlo" - White and blue, (3) 62310 Citroen Xsara - Blue body - conditions are Excellent to Near Mint in Near Mint including rigid cases (small crack on one) - (3)

Estimate: £60-70



Lot No. 14

Scalextric (SCX) Slot Cars A Pair - (1) 61230 Subaru Impreza "Swrt" - Blue body, (2) 62230 Subaru Impreza - Blue See-Photo - conditions are Excellent to Near Mint in Near Mint rigid cases (3)

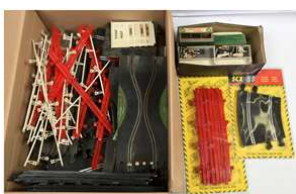
Estimate: £40-50



Lot No. 15

Scalextric (SCX) Slot Car 80820 "Off Road" Set To Include - Volkswagen and Mitsubishi Rally Cars plus various accessories - Overall Excellent (very little use) in a Excellent box (small scuffs on edges)

Estimate: £70-80



Lot No. 16

Scalextric (SCX) Slot Car Accessories To Include Curves and barriers - Mint in Excellent Packing plus Unboxed Various Track - Straights, cures - conditions are Excellent, also come with some plastic buildings - Poor to Fair (qty)

Estimate: £20-30



Lot No. 17

Scalextric Slot Car G.P 3 Set To Include 1 X Car Only - Cooper - Red - Good overall plus Track and Accessories - Good Plus to Excellent all in a generally Good lift off lid box (small tears on corner) with original outer transit carton
Estimate: £30-35



Lot No. 18

Scalextric Slot Cars A Group Of 3 - (1) C/76 Mini - Red body with racing No.1, (2) Same as (1) But Green with racing No.6 and (3) C/74 Austin Healey - Red body with tan interior and tonneau - conditions are Good Plus lovely examples in Fair boxes (3)
Estimate: £50-60



Lot No. 19

Scalextric Slot Cars MM/B1 Motorcycle Racing Typhoon A Pair - (1) Yellow body with racing No.8 and (2) Same as (1) But blue with racing No.1 - conditions are Good Plus lovely examples in Fair boxes (2)
Estimate: £60-70



Lot No. 20

Scalextric Slot Cars MM/B1 Motorcycle Racing Typhoon A Pair - (1) Green body with racing No.5 and (2) Same as (1) But red with racing No.5 - conditions are Good Plus lovely examples in Fair boxes (2)
Estimate: £60-70



Lot No. 21

Scalextric Slot Cars A Pair - (1) MM/C.55 Vanwall F1 Racing Car - Harder to Find Light blue body and (2) MM/C.57 Aston Martin Racer - Red body - conditions are Good to Good Plus in Fair boxes (2)
Estimate: £50-60



Lot No. 22

Scalextric Slot Cars A Group Of 3 - (1) MM/C.55 Vanwall F1 Racing Car - Green, (2) C/62 Ferrari F1 Racing Car - Red and (3) C/63 Lotus F1 Racing Car - Yellow - conditions are Good to Good plus (require very light cleaning) in Fair boxes (3)
Estimate: £50-60



Lot No. 23

Scalextric Slot Cars A Pair - (1) Vintage Bentley - Black body and spoked wheels, grey interior and tonneau, racing No.3 and (2) Alfa Romeo 21HP - Blue body with red interior and spoked wheels, Reddish-brown tonneau - conditions are Good bright examples with REPRODUCTION boxes (2)
Estimate: £70-80



Lot No. 24

Scalextric Slot Cars A Of 4 - (1) Rally Mini - Black with white roof, (2) Austin Healey - Green, (3) Mercedes 190SL - Light drab blue and (4) Aston Martin Racer - Green - conditions are generally Good Plus with REPRODUCTION boxes (4)
Estimate: £60-70



Lot No. 25

Scalextric Slot Cars A Of 6 Racing Cars To Include - Cooper - Green with yellow wheels, Porsche - Yellow, BRM Blue with yellow nose plus others - conditions are Fair to Good Plus with REPRODUCTION boxes (6)

Estimate: £70-80



Lot No. 26

Scalextric Slot Cars Aston Martin DB5 A Pair - (1) Red body with chrome trim and racing No.2 and (2) Same as (1) But with racing No.5 - conditions are generally Good Plus bright examples in Fair window boxes (2)

Estimate: £50-60



Lot No. 27

Scalextric Slot Cars C69 Ferrari GT A Pair - (1) Blue body with chrome trim and racing No.2 and (2) Same as (1) But with racing No.5 - conditions are generally Good Plus bright examples in Fair to Good (complete) window boxes (2)

Estimate: £60-70



Lot No. 28

Scalextric Slot Cars A Group Of 3 - (1) C17 Lamborghini Miura - Yellow body, (2) C77 Ford GT Racer - Light blue with dark blue bonnet, racing No.12 and (3) Same as (2) But White with black bonnet and racing No.7 - conditions are Good Plus to Excellent bright examples in Fair window boxes (3)

Estimate: £50-70



Lot No. 29

Scalextric Slot Cars A Group Of 3 - (1) C3 Javelin - Blue with racing No.5, (2) C4 Electra - Orange with racing No.8 and (3) C16 Ferrari P4 - Red with racing No.11 - conditions are generally Good See-Photo in Fair to Good (grubby) window boxes (3)

Estimate: £50-60



Lot No. 30

Scalextric Slot Cars A Pair - (1) Sunbeam Tiger - Yellow with racing No.4 Stripes and (2) Triumph TR4 - Blue with racing No.5 - conditions are Good to Good Plus lovely examples with REPRODUCTION boxes (2)

Estimate: £50-60



Lot No. 31

Scalextric Slot Cars A Group Of 3 - (1) Aston Martin DB - Green with racing No.14, (2) Ferrari GT - Red (missing No.'s) and (3) Same as (2) But Blue body with racing No.3 - conditions are Good Plus bright examples with REPRODUCTION boxes (3)

Estimate: £60-70



Lot No. 32

Scalextric Slot Cars A Group Of 4 - (1) Ford Mirage - Green, racing No.14, (2) Vanwall F1 - Dark Green, (3) AC Cobra - Red with racing No.66 and (4) Same as (3) But green with racing No.11 - conditions are Fair to Good Plus with REPRODUCTION boxes (4)

Estimate: £50-60



Lot No. 33

Scalextric Slot Cars A Group Of 5 To Include - C.052 Ford Escort MK1 "Mexico" - White and blue, C.145 Lancia "pioneer" - Blue plus others - conditions are Good to Good plus in Fair to Good window boxes and rigid case (5)

Estimate: £60-70



Lot No. 34

Slot Cars A Group Of 4 - (1) Fly Panoz LMP-1 "USA Edition", (2) Same as (1) But "Le Mans 2000", (3) Autoart Nissan Fairlady - Silver-grey body and (4) Mazda RX8 - Red body - conditions are Excellent to Excellent Plus including rigid cases (4)

Estimate: £60-70



Lot No. 35

Spirit Slot Cars Courage C65 A Group Of 3 - (1) "Le Mans 2006", (2) "Gulf Le Mans 2005" and (3) "American Le Mans 2005" - conditions are Excellent Plus in Near Mint rigid cases (3)

Estimate: £50-70



Lot No. 36

Scalextric Slot Cars A Group Of 4 - (1) C3090 Ford Focus "Stobart", (2) C2883 Ford Focus "Stobart", (3) C2561 Peugeot "Works 2004" and (4) C2645 Skoda "Mc Rae" - conditions are Excellent to Near Mint in Good plus to Excellent Plus rigid cases and carded sleeves (one has small crack) - (4)

Estimate: £60-70



Lot No. 37

Slot Car Group To Include - Scalextric "Speed Supreme" Set With 2 X Cars, Track and Accessories - Excellent in a Good box, Autoart Mitsubishi, SCX Ford Escort MKII "British Airways", Another "Daily Express" - Conditions are Excellent to Excellent Plus in Excellent rigid cases, Unboxed Skoda - Good - plus 2 X (1/18th) Bburago models See-Photo - Good Plus to Excellent

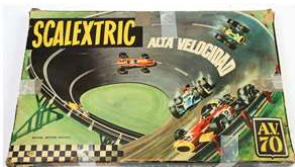
Estimate: £70-80



Lot No. 38

Scalextric Slot Car Group Of 10 To Include - Mini, Vintage Bentley, Stock Car, Porsche Turbo, Ford Capri plus others - conditions are Fair to Good Plus (some bright examples) - 1 X rigid case (10)

Estimate: £60-80



Lot No. 39

Scalextric Slot Car AV70 Set "Alta Velocidad" Rare Spanish Issue - To include 2 X Cars - (1) BRM (Made in Spain) - Red and (2) Same but blue, plus various track and accessories (not checked for Correctness) in a Poor to fair lift off lid box

Estimate: £50-60



Lot No. 40

Scalextric Slot Car Group Of 3 - (1) B/1 Typhoon Motorcycle and Sidecar - Blue with racing No.4 - Good Plus to Excellent in a Good box, (2) Micro "James Bond" Set with 2 X Cars and (3) Velodrome set with 2 X Cycles - conditions are generally Good in Poor to Fair boxes (3)

Estimate: £50-60



Lot No. 41

Slot Cars A Group Of 4 - (1) Carrera "James Bond" Aston Martin V12 Vanquish - Grey, (2) Scalextric C117 Ford Capri, (3) C379 Ford Capri 3.0 and (4) C2230 Lotus - Green - conditions are Good Plus to Excellent in Fair to Excellent window boxes and rigid cases (4)

Estimate: £50-60



Lot No. 42

TCR Slot Car Racing Set To Include 3 X Cars plus various accessories and Curved Track Pack - Conditions are Good to Good Plus overall in Fair to good boxes (2)

Estimate: £20-30



Lot No. 43

Slot Cars A Group Of 3 sets - (1) Scalextric GP3 With 2 X Cars and Accessories, Airfix MR7 with 2 X Cars and accessories, (3) MR11 with 1 X Car plus accessories - conditions are Good to Good Plus in Poor boxes (not checked for correctness) - (3)

Estimate: £40-50



Lot No. 44

Scalextric C742 "Le Mans Racing" Set To Include 2 X Porsche 956 Cars - Good Plus overall with various track and accessories - Good to Excellent (showing some rust to track) in a Poor to Fair box

Estimate: £20-25



Lot No. 45

Scalextric Slot Car Sets A Group Of 3 - (1) 75 To Include 2 Cars - (1) BRM - Green and (2) Cooper - Red plus various track and accessories, (2) "Rallye Sprint" - To Include 2 X Ford Fiesta (red & Black) plus track and Accessories and (3) Micro "Need For Speed" with 2 X Cars with accessories - conditions Good to Good Plus in Fair to Good boxes (none checked for correctness) (3)

Estimate: £40-50



Lot No. 46

Scalextric Slot Car Sets A Group Of 9 To Include - "Mighty Metro", "Ford Rs Cosworth", Formula One", "Austin Rover" plus others - conditions are Fair to Good Plus all come with cars and various accessories (None not checked for correctness) in Poor to Fair boxes plus Unboxed Audi set - Fair to Good See-Photo

Estimate: £80-100



Lot No. 47

Scalextric Slot Car A Group Of 3 - (1) C113 Triumph TR7, (2) C2177 Subaru Impreza and (3) C2078 Renault Laguna - conditons are Good to good Plus in Fair to Good rigid cases and window box (3)

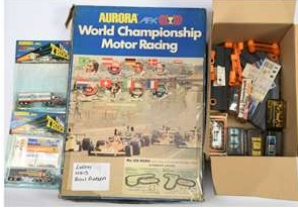
Estimate: £30-40



Lot No. 48

Slot Car Sets A Group Of 12 To Include - Scalextric "Porsche Turbo", Jump Jockey, Matchbox Power-track, plus others including some loose track - conditions are Poor to Good Plus in Poor to Fair boxes (None checked for correctness) See-Photo

Estimate: £80-90



Lot No. 49

Slot Car Group To Include Aurora "World Championship Motor Racing" Set To Include - 2 X Cars plus various accessories, Fair to Good (Not checked for correctness) in a Poor to fair box plus 2 X Team Trucks, 4 X Cars and 2 X Matchbox Power-track Cars - conditions are Good to Excellent in Fair to Good packing and some loose track

Estimate: £60-70



Lot No. 50

Scalextric Slot Cars A Group Of 7 To Include - C465 "Batman" Batmobile, C144 Lancia "Martini", C391 Ferrari GTO plus others - conditions are Excellent overall (very little use) in Good to Excellent window boxes (7)

Estimate: £70-80



Lot No. 51

Scalextric (Matchbox SCX) Slot Cars A Group Of 4 - (1) 83900 Seat Ibiza, (2) 83820 Toyota Celica, (3) 83970 BMW M3 and (4) 83720 Toyota Celica - conditions are Excellent to Excellent Plus (very little used) in Good Plus to Excellent window boxes (4)

Estimate: £60-70



Lot No. 52

Scalextric (Matchbox SCX) Slot Cars Subaru Impreza A Group Of 4 - (1) 83770, (2) 83580, (3) 83280 and (4) 83580 - conditions are Excellent to Excellent Plus (very little used) in Good Plus to Excellent window boxes (4)

Estimate: £60-70



Lot No. 53

Scalextric (Matchbox SCX) Slot Cars A Group Of 4 - (1) 83850 Toyota Celica, (2) Subaru Impreza, (3) 73020 Peugeot 405 "Pioneer" and (4) Same as (3) But yellow - conditions are Excellent to Excellent Plus (very little used) in Good to Excellent window boxes (4)

Estimate: £60-70



Lot No. 54

Scalextric (P & J Models) Slot Car Body Shells A Group Of 4 To Include Lancia, Ford Rs 200 - conditions are Excellent to Mint in Good to Good Plus (sealed) bags with carded header

Estimate: £20-25



Lot No. 55

Slot Cars A Sets A Group Of 3 - (1) Scalextric 672 "Escort Rally" 2 X Ford Escorts, Ninco 20101 "Rally" 2 X Cars Peugeot and Renault - conditions are Excellent to Excellent Plus in Good Plus to Excellent boxes (very little used) and 20104 "Rally" 2 X Cars - Mint (factory sealed) within a Excellent box (3)

Estimate: £70-80



Lot No. 56

Scalextric Slot Car Set C579 "Scalextric 300" To Include 2 X Mini's (1) Yellow and (2) Red plus various track and accessories (not checked for correctness) in a Fair box

Estimate: £20-30

Auction F035
Tinplate, Slot Cars & Meccano Online Auction on 19 March 2026



Lot No. 57

Scalextric Slot Cars A group Of 4 - (1) C2474A Opel Astra, (2) C2475A Opel Astra, (3) C2391A Mercedes CLK and (4) C2929A Maserati 250F LTD 5050 - conditions are Excellent (very little used) in Good Plus to Excellent presentation boxes with sleeves (4)

Estimate: £60-70



Lot No. 58

Scalextric Slot Cars A Formula 1 Racing Cars A Group To Include - C2817D Honda, C2863 Renault, C2715D Honda and 2 X 2-piece sets - conditions are Excellent to Near mint (very little used) in Good Plus to Excellent Plus boxes and rigid cases (5)

Estimate: £70-80



Lot No. 59

Scalextric Slot Cars A Group Of 6 To Include - C2878 Range Rover, C3622 Aston Martin Vantage GT3 plus others - conditions are Fair to Excellent (some little used) in Good Plus to excellent rigid cases (6)

Estimate: £60-80



Lot No. 60

Scalextric Slot Car Sets A Pair - (1) "Le Mans 24Hr" To Include Porsche 956 and Jaguar - Good to Good Plus in a Poor box and "James Bond Taken From The Film "Quantum Of Solace" 2 X Cars - Excellent (very little used) in a Fair box

Estimate: £40-50



Lot No. 61

Scalextric Slot Cars Related Group To Include - 45 Set 2 X Mini Cars plus various track, 2 X Hand Throttles, 4 X Boxed Cars including - C/86 Porsche plus others and some loose track See-Photo - Conditions are Poor to Good in Poor to Good boxes (qty)

Estimate: £50-70



Lot No. 62

Scalextric Slot Car FJ31 Set To Include 2 X cars - (1) Cooper - Red, (2) Lotus - Blue plus various accessories See-Photo (not checked for correctness) - conditions are Fair to Good in a Poor box

Estimate: £20-30



Lot No. 63

Slot Car Sets A Pair - (1) "Rally Stage" with 2 X cars - (1) Mini and (2) ford Fiesta plus track and accessories - Good Plus overall in a Fair box and (2) Artin Mega Loop - Good in a Fair box (2)

Estimate: £25-30



Lot No. 64

Slot Car Set Fastlane "Extreme Loop Challenge" includes cars and accessories - conditions are Good (not checked for correctness) in a fair box

Estimate: £15-20



Lot No. 65

Collection Only Slot Car Related Group Of to Include Scalextric 50S Set with 2 X Cars, CM33 Set With 2 X Cars, GP1 Set With 2 X Cars plus other including track and micro set, Aurora "Ghost Racers" set plus others - conditions are Poor to Good Plus in Poor to Fair boxes (qty)

Estimate: £70-80



Lot No. 66

Scalextric Slot Car Sets A Group Of 7 To Include - "James Bond" - "Quantum Of Solace", Formula One, "Rally Sport" plus others - Some with cars (not checked for correctness - Fair to Good Plus in Poor to Fair boxes (7)

Estimate: £60-70



Lot No. 67

Scalextric (Scalex) Tinplate Slot Cars A Group Of 6 To Include - Jaguar Xk120 - Red, Ferrari 4.5 Litre - Red plus others - conditions are Poor to Fair (6)

Estimate: £60-70



Lot No. 68

Scalextric Slot Car C96 Auto Union - White body with green wheels and racing No.5 - Fair to Good (requires some cleaning)

Estimate: £70-80



Lot No. 69

Scalextric Slot Car C69 Aston Martin DB4 GT "Marshall" - Black body white roof light and light gold wheels - Good overall (wear to decals) See-Photo

Estimate: £50-60



Lot No. 70

Scalextric Slot Cars "James Bond" A Pair - (1) Aston Martin - White body and roof panel, red interior with figures and (2) Mercedes 190SL - Black body with red interior and figure - conditions are Fair (require light cleaning) - (2)

Estimate: £120-140



Lot No. 71

Scalextric Slot Cars "James Bond" A Pair - (1) Aston Martin - White body and roof panel, red interior with 1 X figure and (2) Mercedes 190SL - Black body with red interior and figure - conditions are Fair (require cleaning) - (2)

Estimate: £80-100



Lot No. 72

Scalextric Slot Cars "James Bond" A Pair - (1) Aston Martin - White body and roof panel, red interior with figures and (2) Same as (1) But with 1 X figure - conditions are Poor (could be better with cleaning) - (2)

Estimate: £70-80



Lot No. 73

Scalextric Slot Cars A Group Of 5 - (1) Austin Healey - Green, (2) Same as (1) But Red, (3) Mercedes 190 SL - White, (4) Same as (3) and (5) Spanish Mercedes 250 SL -White with black hood - conditions are Fair to Good (require some cleaning) - (5)

Estimate: £60-70



Lot No. 74

Scalextric Slot Cars A Group Of 5 - (1) Austin Healey - Green, (2) Same as (1) But Red, (3) Mercedes 190 SL - White, (4) Same as (3) and (5) Spanish Mercedes 250 SL -White with black hood - conditions are Fair to Good (require some cleaning) - (5)

Estimate: £60-70



Lot No. 75

Scalextric Slot Cars A Group Of 5 - (1) Mercedes 190 SL - White, (2) Same as (1) Light blue, (3) Same as (1) But Black, (4) Spanish Mercedes 250 SL -White with black hood and (5) Same as (1) But white including hood - conditions are Fair to Good (require much cleaning) - (5)

Estimate: £70-80



Lot No. 76

Scalextric Slot Cars A Group Of 6 To Include - Austin Healey Sports - Red, Jaguar Type D Racing Car - Green, (Spanish) Jaguar Type E - Red plus others - conditions are Fair to Good (require much cleaning) - (6)

Estimate: £60-70



Lot No. 77

Scalextric Slot Cars A Group Of 8 To Include - Austin Healey Sports - Red, Ferrari GT - Blue, Aston Martin DB4 GT - Red including roof panel - plus others - conditions are Poor to Good (require much cleaning) - (8)

Estimate: £70-80



Lot No. 78

Scalextric Slot Cars A Group Of 7 To Include - Ferrari GT - Blue, Aston Martin DB4 GT - Blue, Mercedes 190 SL - Light blue plus others - conditions are Fair to Good (some require cleaning) - (7)

Estimate: £70-80



Lot No. 79

Scalextric Slot Cars A Group Of 10 To Include - Jaguar Type D Racing Car - Yellow, Porsche Racing Car - Green plus others - conditions are Poor to Good (require cleaning) - (10)

Estimate: £60-70



Lot No. 80

Scalextric Slot Cars A Group Of 7 To Include - Vanwall F1 Racing Car - Green, Lister Jaguar - Blue plus others - conditions are Fair to Good (require cleaning) - (7)

Estimate: £60-70



Lot No. 81

Scalextric Slot Cars A Group Of 8 To Include - Austin Healey Sport - Red, Jaguar Type D Racing Car - Blue plus others - conditions are Fair to Good (require cleaning) - (8)
Estimate: £70-80



Lot No. 82

Scalextric Slot Cars A Group Of 8 To Include - Vanwall F1 Racing Car - Green, BRM F1 Racing Car - Red - plus others - conditions are Fair to Good (require much cleaning) - (8)
Estimate: £60-70



Lot No. 83

Scalextric Slot Cars A Group Of 8 To Include - Sunbeam Tiger - Yellow, Triumph TR4 - Blue, Mercedes 190 SL - Light blue plus others - conditions are Poor to Good (require much cleaning) - (8)
Estimate: £50-70



Lot No. 84

Scalextric Slot Cars A Group Of 7 Austin Healey Sports To Include - Green and red - conditions are Fair to Good (require cleaning) - (7)
Estimate: £50-60



Lot No. 85

Scalextric Slot Cars A Group Of 9 To Include Typhoon Motorcycle And Sidecar - Red - Racing Cart - Blue plus others See-Photo - conditions are Fair to Good Plus (Some require cleaning) - (9)
Estimate: £70-80



Lot No. 86

Scalextric Slot Cars A Group Of 3 - (1) Vintage Bentley - Black body, (2) Same as (1) But Green and (3) Alfa Romeo - Blue and red - conditions are Fair (could be better with some cleaning) - (3)
Estimate: £60-70



Lot No. 87

Scalextric Slot Cars A Group Of 4 - (1) Vintage Bentley - Black body, (2) Same as (1) But Green and (3) Alfa Romeo - Blue and red, (4) Same as (3) - conditions are Poor to Fair (could be better with some cleaning) - (4)
Estimate: £60-70



Lot No. 88

Scalextric Slot Cars A Group Of 10 To Include - Ferrari GT - Red, Mercedes 190 SL - White, (Spanish) Fiat 600 - Red - conditions are Poor to Good (could be better with some cleaning) - (10)
Estimate: £70-80

Auction F035
Tinplate, Slot Cars & Meccano Online Auction on 19 March 2026



Lot No. 89

Scalextric Slot Cars A Group Of 13 To Include - Ferrari GT - Blue, Mercedes 190 SL - White, Austin Healey Sports - Red - conditions are Poor to Good (could be better with some cleaning) - (13)
Estimate: £70-80



Lot No. 90

Scalextric Slot Cars A Group Of 19 To Include - Customised Corvette - Green, Rally Mini - Green and white, Ford Escort MK1 plus others - conditions are Poor to Good (could be better with some cleaning) - (19)
Estimate: £50-60



Lot No. 91

Scalextric Slot Cars A Group Of 21 To Include -March ^-Wheeled Racing Car - Green and white, ELF Tyrrell - Blue and white plus others - conditions are Poor to Fair (could be better with some cleaning) - (21)
Estimate: £50-60



Lot No. 92

Slot Cars A Group Of 12 To Include Various Manufacturers - Ford Mustang Fastback - Yellow, Corvette Stingray - Red, Trans-Am "Bandit" plus others - conditions are Poor to Fair (Many could be better with some cleaning) - (12)
Estimate: £70-90



Lot No. 93

Slot Cars Jaguar & Aston Martin A Group Of 9 To Include Various Manufacturers - Jaguar Type E - Red SS100 - Green, Aston Martin DB4 GT - White plus others - conditions are Fair to good (some require cleaning) - (12)
Estimate: £60-80



Lot No. 94

Slot Cars A Group Of 12 To Include Various Manufacturers - Corvette Stingray - Turquoise and maroon. Mercedes C111 - Off white plus others - conditions are Poor to Good (require cleaning) - (12)
Estimate: £60-80



Lot No. 95

Slot Cars A Group Of 13 To Include Various Manufacturers - Datsun 260Z - Blue, Mercedes 300 SL - Blue, Racing Cart - Red plus others - conditions are Poor to Good (require cleaning) - (13)
Estimate: £50-60



Lot No. 96

Slot Cars A Group Of 11 To Include Various Manufacturers - Ferrari GTO - Red, Jaguar Type S - Red plus others - conditions are Poor to Good (require cleaning) - (11)
Estimate: £50-70

Auction F035
Tinplate, Slot Cars & Meccano Online Auction on 19 March 2026



Lot No. 97

Slot Cars A Group Of 10 To Include Various Manufacturers - Jaguar Type E - Green, Austin Healey - Off White plus others - conditions are Poor to Good (require cleaning) - (10)
Estimate: £50-60



Lot No. 98

Slot Cars A Group Of 13 Single Seat Racers To Include Various Manufacturers - Mercedes - Silver, Bugatti Type 35 - Blue plus others - conditions are Poor to Good (require cleaning) - (13)
Estimate: £70-80



Lot No. 99

Scalextric Slot Car Accessories A Large Group To Include - Body Shells, Grandstand Figures, Nylon Guides Plus much more See-Photo - All Come in sealed bags with carded headers (Large QTY)
Estimate: £80-100



Lot No. 100

Slot Cars A Large Group Of useful Spares To Include Scalextric Body shells, motors, tyres, Spoilers Jig for better performance models plus much more including other manufacturers- conditions are Poor to Good See-Photo (Large QTY)
Estimate: £60-80



Lot No. 101

Scalextric Slot Cars B/1 Typhoon Motorcycle and sidecar A Pair - (1) Blue body with racing No.4 and (2) Same as (1) But with racing No.9 - conditions are Excellent (very little used) in Good to Good Plus boxes with 1 X Folded leaflet (2)
Estimate: £70-80



Lot No. 102

Scalextric Slot Cars A Group Of 4 - (1) C/32 Mercedes - Brown with cream roof, C8 Lotus - Green plus others - conditions are Fair to Good Plus in Fair to Good window boxes and rigid case
Estimate: £50-60



Lot No. 103

Scalextric Slot Car Set "Starsky And Hutch" - Includes 2 X Cars Ford Torino & Corvette - Mint (Factory Sealed) in a Unopened Excellent "Marks & Spencer" box See-Photo
Estimate: £80-100



Lot No. 104

Triang Minic Motorways A Group Of 7 Vehicles To Include - Fire Engine, Aston Martin Jaguar Plus others - conditions are Poor to Good Plus in Fair to Good window and lift off lid boxes (7)
Estimate: £70-80



Lot No. 105

Triang Minic Motorways A Large Group To Include 14 Vehicles - Single 7 Double Decker Buses, Jaguar "Police" car, Mercedes 300 SL plus others, also includes various Track And Accessories - conditions are Poor to Good With a Couple of Poor boxes See-Photo (qty)

Estimate: £70-80



Lot No. 106

(Zil Russian) Pressed Steel/Tinplate Articulated Truck - Red Cab with white front, blue Trailer, black solid plastic wheels - This impressive Model is Excellent Plus Superb example in generally Fair box - (approx 80cm)

Estimate: £70-90



Lot No. 107

(Zil Russian) Pressed Steel/Tinplate Articulated Truck - Light blue Cab with grey front, green Trailer, black solid plastic wheels - This impressive Model is Excellent Plus Superb example in generally Fair box - (approx 80cm)

Estimate: £70-90



Lot No. 108

(Zil Russian) Pressed Steel/Tinplate Articulated Truck - Brown Cab with grey front, green Trailer, black solid plastic wheels - This impressive Model is Excellent Plus Superb example in generally Fair box - (approx 80cm)

Estimate: £70-90



Lot No. 109

(Zil Russian) Pressed Steel/Tinplate Tipper Truck - Blue cab and chassis, light grey front, black solid plastic wheels - This impressive Model is Good Plus still displays lovely (approx 52cm)

Estimate: £50-70



Lot No. 110

Eastern European Made Tin Plate Clockwork issues To Include Mule With Cart and Clown Figure, Garage with 2 X plastic Cars, 2 X Trains Set, Car set - conditions are Good (slight fading) to Excellent in Fair to Good boxes (5)

Estimate: £50-60



Lot No. 111

Mamod Live Steam Engine - Green, black, cream, With Some Accessories - Good Plus overall in a Fair box

Estimate: £40-50



Lot No. 112

Laterna Magica (Germany Late 1800's) Tinplate Lantern - Come with colourful slides plus some extras See-Photo - Fair in a Fair wooden presentation box with colour label to lid

Estimate: £40-50

Auction F035
Tinplate, Slot Cars & Meccano Online Auction on 19 March 2026



Lot No. 113

Mettoy Early Tinplate 2011 Monoplane - Yellow and blue with roundels and "K 3520" Lettering to wings, red propeller and cover - Fair See-Photo (Length approx 29cm)
Estimate: £50-60



Lot No. 114

Triang Tinplate Ranger 10 Pick-Up Truck - Green with white and yellow plastic parts, labels to doors - Good Plus lovely example in a Fair colourful carded picture box (approx 38cm)
Estimate: £50-60



Lot No. 115

JNF (Germany) Tinplate Battery Operated Mercedes Racer - Champagne- silver body with red seat, racing No.6 - Good Plus overall lovely example (approx 34cm)
Estimate: £90-110



Lot No. 116

JNF (Germany) Tinplate Mercedes Racer - Red body with cream and brown interior, figure driver - Good Plus (missing screen) still a lovely example (approx 24cm)
Estimate: £50-60



Lot No. 117

JNF (Germany) Mercedes 300 Ponton Saloon - Very early issue, black body with plated metal parts Body appears to have been (Restored/Repainted) - over displays well with a REPRODUCTION box See-Photo
Estimate: £40-50



Lot No. 118

DBS Blechspielwaren (Germany) Tinplate Clockwork Novelty Toy No.240 "Duett" - comprising Bicycle with 2 x Clown riders, the clockwork motor Excellent in a Poor to Fair lift off lid box
Estimate: £40-50



Lot No. 119

Triang Large Scale Pressed Steel Breakdown (Crane) Truck - White cab and chassis, blue back and yellow jib - Good overall (without header)in a Fair box See-Photo (aprox 40cm)
Estimate: £50-60



Lot No. 120

Triang Diesel Series Large Scale Pressed Steel Delivery Truck - Red cab and chassis, blue stake back with 7 X "TRIANG" Churns - Fair (approx 32cm)
Estimate: £40-50



Lot No. 121

Triang Minic 13m Tinplate Racing Car - Green with Light green-blue base, red side exhaust, racing No.6 and chrome hubs with white tyres (one tyre perished) - Good Plus lovely example in a Good (slightly grubby) carded box
Estimate: £50-60



Lot No. 122

Brimtoy Tinplate Wonder Car - Green body with grey base and clockwork motor - Excellent Superb example in a Good Plus carded picture box with key
Estimate: £60-70



Lot No. 123

Triang Bandmaster Top No.4 Tinplate Spinning Top - Excellent overall in a Fair colourful carded box and Pifco Genie Magic Lamp - Marble finish - Excellent in a Good (scuffs on edges) carded box (2)
Estimate: £40-50



Lot No. 124

Triang Wooden Milk Delivery Cart with red pressed steel wheels, black tyres, comes with 2 X "TRIANG" churns (Handle is separate) - Fair See-Photo
Estimate: £30-40



Lot No. 125

1960's Hand Glove Puppets A Group Of 8 To Include - King, Wolf, Devil plus others See-Photo - conditions are generally Good Plus bright examples (8)
Estimate: £30-40



Lot No. 126

Frog Aircraft Interceptor Fighter - Chrome finish with "RAF" roundels - Good overall in a Fair (grubby) lift off lid box and Triang M117 Rocket Firing Tank Plastic and Tinplate - Dark green, silver and red with clockwork motor - Good Plus in a Poor box (2)
Estimate: £40-50



Lot No. 127

Hover Lotus Racing Car Large Plastic Battery Operated Issue - Green with figure driver (approx 36cm) - Good Plus in a Fair box and Unboxed Large Scale Plastic Tanker (Unconfirmed Manufacturer) - Red with "MOBIL" side labels and black solid plastic wheels - Good Plus (approx 48cm)
Estimate: £40-50



Lot No. 128

A Group Of 4 Mainly Games - (1) Unity Conductor Set, (2) Lone Star Roll Ticket Machine, (3) Merit Driving Test and (4) Same as (3) But later issue - conditions are Fair to Excellent (none checked for correctness) in Poor to Fair boxes (4)
Estimate: £30-40



Lot No. 129

A Group Of 3 - (1) Playcraft Navy Blinker Code-Lights, (2) Ideal Electronic Radar Search Game, (3)W Space Station Morse Code Signaling Set - conditions are Good to Excellent (None checked for correctness) in Fair to Good (slightly grubby) boxes (3)

Estimate: £40-50



Lot No. 130

Tinplate & Plastic Typewriters A Group Of 3 - (1) Marx Light blue, red, (2) Mettoy Red, blue, black and (3) Unboxed - Green, red - See-Photo conditions are Fair to Good Plus in Fair boxes (3)

Estimate: £40-50



Lot No. 131

MOBO Pressed Steel/Tinplate Novelty Group Of 3 - (1) Krazy Car - Yellow and red, (2) Puppy Dog with Lead and Handle, (3) Same as (2) But With Lead Only- conditions are Fair See-Photo (3)

Estimate: £50-60



Lot No. 132

Plastic Made Space Gun (china) God and red with friction trigger and Playmates "Star Trek" Laser Gun - conditions are Good to Good Plus (2)

Estimate: £20-30



Lot No. 133

Joustra Large Scale Tinplate Mobile Dock Crane - Blue (approx Height 57 cm - Overall Good Plus lovely Example See-Photo

Estimate: £30-40



Lot No. 134

Tinplate & Plastic A Group Of 3 - (1) Berwick Playtime Cooker Set, (2) Tinplate Clockwork Rabbit (Romanian) and (3) TN (Japan) "Smokey Bill" Tinplate Vintage Car - conditions are Generally Good to Excellent in Fair to Good boxes (3)

Estimate: £40-50



Lot No. 135

Bandai (Japan) Tinplate Friction Triumph TR3 Sports Car - Two-Tone Metallic red and off white with racing No.3 - Good Plus overall still a bright example in a Fair box

Estimate: £90-110



Lot No. 136

Bandai (Japan) Tinplate Friction Corvette - Silver body with red hood, chrome trim - Good Plus overall bright example

Estimate: £50-60



Lot No. 137

Tinplate Ford Capri A Group Of 3 - (1) CKO - Metallic green with orange interior, (2) TT (Japan) Red body with black interior and remote control unit and (3) Same as (2) But "Polizei" - White body with blue roof light - conditions are generally Excellent to Near Mint in Good to Excellent window boxes and clear case (3)

Estimate: £50-60



Lot No. 138

Marklin 9034 Fire Engine with pump - Large tinplate Clockwork model of recent Limited Edition production, includes 3 x hose reels, 2 x ladders and with key - Mint in a Excellent box with inner polystyrene tray (couple of small scuffs on edges)

Estimate: £100-120



Lot No. 139

Marklin 1991 Fire Engine With Turntable Ladder - Large tinplate Clockwork model of recent Limited Edition production, with key - Mint in a Good Plus box with inner polystyrene tray (couple of small scuffs on edges)

Estimate: £110-130



Lot No. 140

Marklin 1993 Tanker "Standard" - Large tinplate Clockwork model of recent Limited Edition production, with key - Mint in a Near Mint box with inner polystyrene tray

Estimate: £90-110



Lot No. 141

Marklin 1989 "Reichspost" Delivery Van - Large tinplate Clockwork model of recent Limited Edition production, with key - Mint in a Excellent box with inner polystyrene tray

Estimate: £90-110



Lot No. 142

Marklin 1992 Covered Truck "Marklin" - Large tinplate Clockwork model of recent Limited Edition production, with key - Mint in a Excellent Plus box with inner polystyrene tray

Estimate: £100-120



Lot No. 143

Marklin 1980 large tinplate clockwork model of a Junkers JU52 3-Engine Airliner - Grey and Black with "D-A LBA" lettering, key and booklet - Near Mint in a Good Plus box with Excellent Polystyrene tray with booklet

Estimate: £150-200



Lot No. 144

Mamod Live Steam Open Back Wagon - Blue, white, black and red with "Mamod Steam Wagon" To sides - Near Mint (Never Fired) in a overall Good box

Estimate: £80-100

Auction F035
Tinplate, Slot Cars & Meccano Online Auction on 19 March 2026



Lot No. 145

Mamod Live Roadster Car - Off white, black, red and chrome - Near Mint (Never Fired) in a overall Good box
Estimate: £80-100



Lot No. 146

Wilesco Live Steam Traction Engine - Blue, grey and red, chrome trim - Near Mint (Never Fired) in a Good carded box with detailed picture

Estimate: £70-90



Lot No. 147

KO Toys (Japan) Gear Robot - Blue and Red (missing Remote Control) - Fair still displays well See-Photo

Estimate: £40-50



Lot No. 148

Tinplate & Clockwork Motorcycles A Group Of 23 Includes Various Scales And Manufacturers "Police", Racing plus others See-Photo Conditions are Fair to Good some bright examples (23)

Estimate: £90-110



Lot No. 149

JR 21 Toys "Thunderbirds" Plastic Friction Drive "Lady Penelope's" FAB 1 Rolls Royce - Pink body, black interior with "Lady Penelope & Parker Figures, cxchrome trim and wheels with white tyres - Good Plus still a lovely example in a Good overall lift off lid box

Estimate: £80-90



Lot No. 150

Tinplate & Plastic Group To Include - Merit Space Saucer, Scalex Boat, OK Fridge, Combex Orbitoy and Unboxed Large Scale Marx Powerhouse Mobile Crane Truck - conditions are Fair to Good Plus in Poor to Fair boxes (5)

Estimate: £60-70



Lot No. 151

MOKO "Muffin The Mule" - Off white and black with red and gold trim - This Unboxed issue is generally Good overall

Estimate: £40-50



Lot No. 152

A Tinplate And Plastic Group To Include - "Talk-A-Tron" Plastic Robot - Excellent in a Fair box, Schylling DC3 Tinplate Air Liner - Near Mint in A Good Box plus 5 X unboxed Triang Tank, Fair Ground Rides plus others - conditions are Poor to Good Plus See-Photo (7)

Estimate: £40-50



Lot No. 153

Schuco Tinplate Clockwork Oldtimer Mercer Type 35 Vintage Roadster - Maroon body with red plastic seats - Good Plus still a lovely example in a Good (slightly grubby) presentation box
Estimate: £30-40



Lot No. 154

Tinplate A Pair - (1) JNF Favorit - Green body with tan seats and clockwork Motor - Fair and (2) Arnold Mac 700 Motorcycle Fair (Front forks and wheel are loose from body) - (2)
Estimate: £50-70



Lot No. 155

Tinplate Group Of 4 To Include Recent Issues - (1) "Planet Robot" - Robbie - Black and red, (2) "GORT" - Silver, (3) Schuco Studio Mercedes Racer With Accessories - conditions are Near Mint to Mint in Excellent to Near Mint boxes and (4) Unboxed Triang Minic "Fire Chief" Car - Red with friction motor - Good Plus (4)
Estimate: £50-70



Lot No. 156

Wells (UK) Tinplate Clockwork Coach "Private" - Cream body with red flashes (approx 19cm) - Good Plus lovely example See-Photo
Estimate: £50-60



Lot No. 157

Wells (UK) Tinplate Clockwork Bus "Greenline" - Green body with Yellow and black trim, black solid wheels (approx 19cm) - Good See-Photo
Estimate: £40-50



Lot No. 158

Tinplate & Plastic Group Of 12 To Include Triang Minic Clockwork Delivery Van "Minic Transport", Brimtoy Pocketoy Breakdown Truck plus others - See-Photo - conditions are Fair to Excellent Plus (12)
Estimate: £80-90



Lot No. 159

Tinplate & Plastic Group Of 4 - (1) Brimtoy Pocketoy Tipper - Red, green, (2) Triang Minic - Morris Minor - Blue, (3) "Royal Mail" Delivery Van - Red and (4) Ladybird - Red and Black - conditions are Good Plus to Excellent in Poor to Fair boxes (4)
Estimate: £60-70



Lot No. 160

Rico 754 Seat Saloon Plastic body With Tinplate Battery Operated Base - Dark Green with Silver and chrome trim - Good Plus lovely example in a Good red and gold presentation lift off lid box
Estimate: £70-80



Lot No. 161

Plastic A Group of 4 - (1) Triang Minic Steam Roller - Red, (2) Playcraft Racing Car - Green, (3) Palitoy 2 -Door Coupe - Blue, (4) Telsalda Rocket Firing Army vehicle - conditions are Good Plus to Near Mint in Good to Good Plus boxes and Wooden made Triang Minic Garage - Fair (5)

Estimate: £70-90



Lot No. 162

Triang Minic Tinplate Clockwork A Pair - (1) "Ambulance" - Off white - Fair and (2) Articulated Truck With Log Trailer - Green cab and Trailer With 2 X Logs - Fair to Good See-Photo (2)

Estimate: £50-60



Lot No. 163

Joustra (France) Tinplate Clockwork 2003 Radar Car - Two-Tone green with silver trim - Good Plus overall in a Good carded picture box with folded leaflet

Estimate: £50-60



Lot No. 164

Sutcliffe Tinplate & Plastic Clockwork "Sea Wolf" Submarine - Yellow and red - Excellent lovely example including lift off lid box

Estimate: £50-60



Lot No. 165

Schuco Clockwork Tinplate A Pair - (1) 1070 Mercedes Grand Prix Racer - Yellow with racing No.1 and "Schuco" Key - Good Plus to Excellent and (2) Saloon - Yellow with "E001 Made in England" base - Excellent (2)

Estimate: £60-70



Lot No. 166

Tinplate Clockwork Novelty Issues A Group Of 4 - (1) Lehmann Tortoise, (2) German Ges Gesch "Puss In Boots", (3) TN (Japan) Horse and (4) Unconfirmed Manufacturer Dancing Girl - conditions are Fair to Good Plus (4)

Estimate: £60-80



Lot No. 167

Tinplate & Plastic Clockwork Group To Include - Pocketoy Saloon Car - Red, Wells Brimtoy Bus - Red, plus others also includes Dinky Toys Small Scale "Klingon" Cruiser - conditions are Fair to Good Plus See-Photo (7)

Estimate: £40-50



Lot No. 168

TV Related A Group Of 4 - (1) "Sooty & Sweep" Projector Reel, (2) Muffin The Mule" Soap, (3) Playing Cards and (4) Toy Television Set - conditions are Fair to Good in Poor to Fair boxes (4)

Estimate: £40-50



Lot No. 169

Tinplate & Plastic Group To Include - "Shoot A Grow" Game With Guns, Children's Till, Triang Minic Clockwork Truck & Trailer, Tonka Toys plus others - conditions are Fair to Good to Excellent in Fair boxes (only 2 X boxed) Plus Corgi & Matchbox Toys See-Photo (qty)
Estimate: £40-50



Lot No. 170

Tinplate Garages A Group Of 8 To Include - Mettoy (Hanger), Glamorgan Toy Products - Blue, yellow and red plus others See-Photo - conditions are Fair to Good Plus some lovely examples (8)
Estimate: £70-80



Lot No. 171

Tinplate Garages, Forecourts and Service Ramp A Group Of 16 To Include - Various Manufacturers And Scales See-Photo - conditions are Fair to Good Plus some lovely bright examples (16)
Estimate: £80-100



Lot No. 172

Marx (Swansea) "Camberwick Green" Farmer Bell Truck - Plastic Made - Orange cab and chassis with figure, green back with bottle load - Excellent in a Good Plus carded display box
Estimate: £80-90



Lot No. 173

Victory Models Austin A40 Somerset Plastic Battery Operated Issue - Grey Body with chrome trim, cream interior - Excellent overall bright example in a Fair to good (complete) lift off lid box with folded leaflets See-Photo
Estimate: £60-70



Lot No. 174

Victory Models Plastic Battery Operated Issues A Pair - (1) Hillman Minx De Luxe Saloon - Red body with chrome trim, cream interior - Good (slight fading) in a Poor carded box and (2) Unboxed Triumph TR2 Sports Car - Coral body (some fading), Brown seats with black tonneau (separate Screens) - (2)
Estimate: £60-70



Lot No. 175

Triang Minic Tinplate Clockwork 18m Vauxhall Town Coupe A Pair - (1) Green body with black chassis and (2) Same as 91) But red body - conditions are Fair to Good Plus in Fair boxes (Includes 1 X REPRODUCTION) - (2)
Estimate: £50-60



Lot No. 176

Triang Minic Tinplate Clockwork A Group Of 3 - (1) 24m Luton Van "Minic Transport" - Red and green, (2) Delivery Van "Carter Paterson" Red and Green, (3) Log Carrier - Blue cab with green trailer and log load - conditions are generally Fair to Good in Poor to Good carded boxes (3)
Estimate: £70-80



Lot No. 177

Triang Minic Tinplate Clockwork 76m Balloon Barrage Wagon And Trailer - Camouflage Finish - Green and brown including trailer with dark brown load (HAS BEEN RESTORED/REPAINTED), Without Balloon See-Photo

Estimate: £80-90



Lot No. 178

Triang Minic Tinplate Clockwork 66m CF 6-Wheeled Open Back Military Wagon - Dark Green with a Brown cloth covered back See-Photo Good overall

Estimate: £50-70



Lot No. 179

Triang Minic Tinplate Clockwork 49me Pre-War Searchlight Lorry - dark green with red platform, chrome chassis and hubs with white tyres - Fair still a bright example

Estimate: £70-80



Lot No. 180

Triang Minic Tinplate Clockwork 30m Pre-War Articulated Truck And Trailer "Minic Transport" - Blue cab with red trailer, chrome trim and hubs with white tyres - Fair to good bright example

Estimate: £40-50



Lot No. 181

Triang Minic Tinplate Clockwork Tankers A Group Of 3 - (1) 15m Fixed Tank - Red and green, (2) 31m Articulated "Shell" - Red and green, (3) Same as (2) But "Minic Dairies" - Off white and black - conditions are Fair to Good overall (showing some rusting in places) - (3)

Estimate: £70-80



Lot No. 182

Triang Minic Tinplate Clockwork A Group Of 4 - (1) 103m Forward Control Van "Minic Transport" - Red, (2) 68m Builders Lorry - Blue and green with (Sealed) Plank load, (3) 119m "Watneys" Articulated Truck with Barrel and (3) 72m Articulated Truck And Trailer With 6 X Barrel Load - conditions are Fair to Good Plus bright examples (4)

Estimate: £80-90



Lot No. 183

Triang Minic Tinplate Clockwork A Group Of 4 - (1) 32m Dust Cart - Red and green, (2) 86m Tipper - Two-Tone Green, (3) 81m "LNER" Delivery Van - Blue and (4) Same as (3) But "Southern Vectis" - Green - conditions are Fair to Good (All showing signs of rusting) - (4)

Estimate: £70-80



Lot No. 184

Triang Minic Tinplate Clockwork A Group Of 3 - (1) 48m Breakdown Lorry - Red and green, (2) 75m "Ambulance" - Off white and (3) 62m Fire Engine - Red and black - conditions are Fair to Good (3)

Estimate: £60-80



Lot No. 185

Triang Minic Tinplate Clockwork Buses A Pair - (1) 60m Double Decker "Borvil" - Red body with cream bands, black chassis and cab, white tyres - Good overall and (2) 53m Single Decker "Greenline" - Two-Tone green with cream band - Good Plus to Excellent (2)

Estimate: £70-80



Lot No. 186

Triang Minic Tinplate Clockwork A Group Of 4 - (1) 35m/118m Rolls Royce Tourer - Green and black, (2) 17m Vauxhall Tourer - Green and black, (3) 5m Limousine - Blue and chrome, (4) 19m Vauxhall Cabriolet - Dark blue and black - conditions are Fair to Good (4)

Estimate: £70-80



Lot No. 187

Triang Minic Tinplate Clockwork A Group Of 4 - (1) 9m Streamlined Tourer - Grey, (2) 29m Traffis Control Car - Blue and black, (3) 14m Open Streamlined Tourer - Grey and (4) 39m "Taxi" - Blue and black - conditions are generally Fair to Good (4)

Estimate: £60-80



Lot No. 188

Triang Minic A Group Of 6 To Include "British Railways" Delivery Van, Pre-War Saloon Car, plus others - conditions are Fair and Empty box (Mechanical Horse and Brewery Trailer) - Good (6)

Estimate: £60-70



Lot No. 189

Wells Brimtoy Tinplate Bedford Car Transporter - Yellow and red - Good plus lovely example with 2 X Plastic body Morris Minor Cars - (1) red, (2) Pale blue both with black tinplate bases - All Contained in a Fair blue lift off lid box with paper label (approx 29cm)

Estimate: £70-80



Lot No. 190

Marx (USA) Tinplate Wind-UP Horse Drawn Milk Cart - Red and yellow cart "Toytown Dairy" with grey horse (yellow, red and black trim) - Good overall (showing some age wear) - (approx 26cm)

Estimate: £80-90



Lot No. 191

Marx (USA) Tinplate Wind-UP "Hee-Haw" - Mule Finished in grey pulling cart with churns, Farmer and dog figures - Good overall bright example (approx 26cm)

Estimate: £70-80



Lot No. 192

Marx (USA) Tinplate Clockwork Military Jumpin Jeep - Green and tan With Large wheels to rear and small to front - Good (some small signs of rust)

Estimate: £30-40



Lot No. 193

Bing (German) Tinplate Pre-War Fire Station With 2 X Opening Front Doors - Red and grey with 2 X Tinplate Wind-Up (Clockwork) Fire Engines - Red and black See-Photo - conditions are generally Good bright examples See-Photo
Estimate: £150-200



Lot No. 194

Mettoy Tinplate Wind-Up (Clockwork) Military Covered Lorry - Camouflage Tan, green and brown with green cover - Good Plus (approx 24cm) See-Photo
Estimate: £70-80



Lot No. 195

Mettoy Tinplate & Plastic Wind-Up (Clockwork) Articulated Truck And Trailer "Speedy" - Yellow cab with dark and brown trailer - See-Photo (approx 24cm) - Good Plus bright example
Estimate: £50-70



Lot No. 196

Wells Brimtoy Tinplate & Plastic Bedford TK Articulated Truck And Tanker "ESSO" - Red, Yellow and white with black filler caps and solid wheels - See-Photo (approx 25cm) - Good Plus overall bright example
Estimate: £50-70



Lot No. 197

Tinplate A Group Of Modern Issues To Include 3 X Wind-Up robots and Friction drive Jeep - conditions are Excellent to Mint in Fair to Excellent boxes (4)
Estimate: £30-35



Lot No. 198

Triang Large Scale Pressed Steel Mobile Crane A Pair - (1) Red and light blue, (2) Red and black with bucket and (3) Mangel With wooden Rollers - conditions are Fair (3)
Estimate: £40-50



Lot No. 199

Tonka Pressed Steel and Plastic Issues A Group Of 6 To Include 4 X Mini-Tonka - Quarry Truck, Jeep Plus others and 2 X Large Scale - Dumper and Mobile Crane - Yellow and black - conditions are Fair to Excellent in Poor to Good Plus boxes (6)
Estimate: £70-90



Lot No. 200

Aircraft Related Group to Include 2 X Tinplate Hangers 1 X Large Dark green, 1 X Medium - Green, Vinyl green mat, 7 X Dinky Aircraft, Wooden Made recognition Style models all finished in silver, Metal Figures x 10, Petrol Pumps X 6 and Oil bins X 6 plus some accessories interesting group See-Photo - conditions are Poor to Good (qty)
Estimate: £110-130

Auction F035
Tinplate, Slot Cars & Meccano Online Auction on 19 March 2026



Lot No. 201

Hornby Tinplate Clockwork No.4 "Venture" Speedboat - Two-Tone red and cream with key - Fair still a bright example in a Fair lift off lid box with paper label
Estimate: £50-60



Lot No. 202

Telsalda Plastic Friction drive Removals Van "Home Farm" - Light blue body white opening rear door, silver trim and hubs (approx 13cm) - Good Plus (does have some fading) in a Goo Plus carded picture box
Estimate: £40-50



Lot No. 203

Telsalda Plastic Friction drive Removals Van Commer Ice Cream Van - Green with white interior and hubs, silver trim - Good Plus (some wear to decals) See-Photo in a Good (grubby) carded picture box (aprox 12cm)
Estimate: £40-50



Lot No. 204

Tinplate & Plastic Bedford Van Group Of 4 - (1) Tinplate "Police" - Blue (approx 21cm), (2) Lucky Toys Plastic - Yellow and black (approx 16cm), (3) Plastic Two-Tone - Red and green, (4) same as (3) But Grey and white with red opening door - conditions are Fair to Good Plus bright examples See-Photo (4)
Estimate: £50-70



Lot No. 205

Triang Minic Clockwork Jowett Javelin - Light blue plastic body with tinplate base - Excellent overall (very slight rusting to front See-Photo) in a Good Plus carded box
Estimate: £50-60



Lot No. 206

Plastic Made Group Of 5 To Include - Triang Minic Friction Drive "Police" Van - Black Palitoy Battery Operated 4-Door Saloon - Cream with red wheels plus others - conditions are Fair to Good Plus, Also With (Hong Kong) Battery Operated Commer TV Camera Van - Red, white and black with accessories - Excellent in a Fair window box (5)
Estimate: £60-70



Lot No. 207

Telsalda Plastic Clockwork Robot - God body with black arms and chrome trim - Good Plus bright example with key in a Fair lift off lid picture box
Estimate: £50-60



Lot No. 208

A Large Tinplate & Plastic Group Of 24 To Include - Tonka Toys Tipper Trailer, Open Jeep, Eastern European Tractor & Trailer, Nylint Truck and Trailer, Meccano Fire Engine plus others - conditions are Poor to Fair (24)
Estimate: £70-80

Auction F035
Tinplate, Slot Cars & Meccano Online Auction on 19 March 2026



Lot No. 209

Tinplate Clockwork The Wonder Car - (1) Blue body with chrome trim, (2) Same as (1) But Light blue and (3) Drab green with bonnet steering pin - conditions are Good to Excellent overall with 1 X Poor box plus 2 X wire/pumps and metal wheel See-Photo

Estimate: £70-80



Lot No. 210

Metal & Plastic A Very Large Group OF Mainly More Recent Issue Petrol Pumps, Road and Traffic Signs, Hoardings, Plus Much more See-Photo conditions are Fair to Mint (Large Qty)

Estimate: £80-90



Lot No. 211

Plastic Made A Very Large Group OF Smaller Scale Garages and Forecourts By Various Manufacturer Including Corgi Juniors, Blue Box, plus others - conditions are Fair to God Plus (qty)

Estimate: £50-60



Lot No. 212

Corgi Juniors Plastic 3097 Garage set with 3 X Cars and Reeves (USA) - Near Mint in a Good Plus (sealed) blister pack and Corgi Tourist Carry Case - Good overall (2)

Estimate: £40-50



Lot No. 213

Lead & Others A Group To Include Garden Rollers, Wheel Barrows, Bicycles, Figures, Pigeon box plus others - conditions are Fair to Excellent (some REPAINTED) - (qty)

Estimate: £50-60



Lot No. 214

Meccano Tinplate Constructor car No.1 - Cream including wheels with white tyres, red hood and mudguards - Poor to Fair (some heavy Rusting) See-Photo

Estimate: £40-50



Lot No. 215

Lehmann Tinplate & Plastic Cable Car - Red, White and Blue With Attachment and cable - Excellent in a Good Plus lift off box

Estimate: £30-40



Lot No. 216

Triang Plastic Battery Operated Cargo Ship "Ocean Trader" - White with grey hull, red and black funnel - Good Plus (requires very light cleaning) in a Poor carded box with paper label

Estimate: £20-30



Lot No. 217

Wells Brimtoy Tinplate Clockwork (Wind-Up) Single Decker Bus "Greenline" Green and yellow with dark red wheels - Good overall bright example (approx 18cm)
Estimate: £50-60



Lot No. 218

Sutcliffe Models Tinplate Dumper Truck - Orange body with white wheels - (approx 22cm) - Fair
Estimate: £20-25



Lot No. 219

Tinplate Clockwork Novelty's A Pair - (1) Joustra Penguin - Good and (2) Lehmann Crawling Beetle - Fair See-Photo (2)
Estimate: £50-60



Lot No. 220

Schuco 3000 Telesteering Car A Pair - (1) Blue body and (2) Same as (1) But Dark blue body come with Poor to Fair boxes (one complete with accessories) See-Photo (2)
Estimate: £50-70



Lot No. 221

Tinplate Group Of 5 To Include - Johaku Limousine - Yellow and black, Handmade (resin & tinplate) Bugatti Type 57c - Red and black plus others - conditions are Fair to Good (5)
Estimate: £60-70



Lot No. 222

Mettoy Garage "Sky Park" With forecourt, 3-Story - Red, yellow and black with correct detachable "Mettoy Sky Park" sides - Poor to Fair See-Photo
Estimate: £30-40



Lot No. 223

Triang Tinplate Large Scale Thames Trader "Pickford's" Articulated Removal Truck - Blue and White - overall FAIR (SOME OVER PAINTING) still displays well
Estimate: £100-150



Lot No. 224

Unconfirmed Manufacturer (England) Tinplate Machine Gun "MGK 4" - Blue, red and black with metal stand - Fair (approx 11cm)
Estimate: £20-30

Auction F035
Tinplate, Slot Cars & Meccano Online Auction on 19 March 2026



Lot No. 225

Triang Minic Tinplate Clockwork a Group Of 4 - (1) 23m Tipper - Red and blue, (2) 32m Dust Cart - Green and red, (3) 72m Brewery Truck - Red and green with barrel load and (4) 25m Open back Truck - red and green - conditions are Fair to Good still bright examples (4)

Estimate: £80-90



Lot No. 226

Triang Minic Tinplate Clockwork a Group Of 4 - (1) 16m Caravan Two-Tone Caravan - Red and cream, (2) 33m Steam Roller - Green, (3) 11m Tractor - Green with black rubber tracks and (4) 60m Double Decker Bus - Red and cream - conditions are Good to Good Plus bright examples See-Photo (4)

Estimate: £70-90



Lot No. 227

Triang Minic Tinplate & Plastic Clockwork a Group Of 5 To Include - 13m Racing Car, 78m Military Jeep - Olive green plus others - conditions are Fair to Good Plus (5)

Estimate: £60-70



Lot No. 228

Triang & Brimtoy Tinplate & Plastic Group Of 9 To Include - Tanker, Coal Truck, Racer, Plus others - conditions are generally Fair to good See-Photo some bright examples (9)

Estimate: £60-70



Lot No. 229

Triang & Brimtoy Tinplate & Plastic Group Of 8 To Include - Double Decker Bus, "Esso" Tanker, Breakdown Truck Plus others - conditions are generally Fair to Good See-Photo some bright examples (8)

Estimate: £60-70



Lot No. 230

Plastic Made Land Rovers A Group Of 16 By Various Manufacturers - Safari, Animal Cage, Fire Plus others See-Photo - conditions are generally Good to Excellent (16)

Estimate: £70-80



Lot No. 231

Plastic & Diecast Made Land Rovers A Group Of 22 By Various Manufacturers - Rally, "Ambulance", "Police" Plus others See-Photo - conditions are generally Good to Excellent (22)

Estimate: £70-90



Lot No. 232

Tinplate A Group To Include - KO (Japan) "Billy" The Whale, "Fire Chief" Car, Gama Tank With rubber tracks - conditions are Good to Good Plus bright examples and 2 X Corgi Toys (1) Daimler and (2) "Chitty Chitty Bang Bang" - conditions are Fair (5)

Estimate: £60-70



Lot No. 233

Extremely Rare Subbuteo "Space Craft To The Moon" Game - Include 2 X Spiral Towers - Gold bases and 6 X Rotator (All Different Colours) - Overall condition is Good Plus to Excellent in Fair (still displays well) lift off lid box with paper label - Inner Moon card is Good (Some wear on side) - Accompanied With Correct instruction leaflet See-Photo

Estimate: £800-1,000



Lot No. 234

Marklin Tinplate Clockwork Open Back Tuck - Red and green with black chassis (approx 40cm) - Fair overall

Estimate: £80-100



Lot No. 235

Tinplate A Group To Include "Gas-Oil" Tanker, Local Shuttle Return Train, Military Jeep Plus others - conditions are Fair to Near Mint in Poor to Fair boxes (3 x Unboxed) - (6)

Estimate: £40-50



Lot No. 236

Tonka Toys Large Tinplate Issues A Pair (1) "CAA" Breakdown Truck - White and orange, (2) Mobile Crane Truck - Yellow and black - conditions are Fair to Good still bright examples that display with Fair boxes (2)

Estimate: £60-70



Lot No. 237

Plastic & Tinplate Group To Include Tonka Toys Dumper Truck (Unboxed), (Hong Kong Made) Datsun 240Z "John Morton" plus others - conditions are Fair to Excellent in Fair boxes (4)

Estimate: £40-50



Lot No. 238

Triang Minic No.2 Sports Car - Blue plastic body with black tinplate base and red interior - Fair in a Poor carded picture box

Estimate: £20-30



Lot No. 239

Tonka Toys Pressed Steel Group To Include - Large Dozer, Mobile Crane Truck With Grabber Low-Loader With Load, Mid-Scale Dozer - See-Photo - conditions are Fair to Good overall (4)

Estimate: £60-70



Lot No. 240

Tonka Toys Pressed Steel Group To Include - Large Dozer, Mobile Crane Truck With Grabber, Mid-Scale Dozer With Rear Bucket plus others - See-Photo - conditions are Fair overall (5)

Estimate: £50-60



Lot No. 241

Tonka Toys Pressed Steel Group To Include - Mid-Scale Dozer With Rear Bucket, Dozer With Front Blade plus others - See-Photo - conditions are Fair overall (7)
Estimate: £50-60



Lot No. 242

Tonka Toys Pressed Steel Group To Include - Mid-Scale Dozer With Rear Bucket, Tacked Crane, Mobile Crane Truck Plus Others - See-Photo - conditions are Fair overall (7)
Estimate: £50-60



Lot No. 243

Tonka Toys Pressed Steel Group To Include - Large Scale Camper, Tipper, Breakdown Truck Plus Others - See-Photo - conditions are Fair overall (6)
Estimate: £50-70



Lot No. 244

Tonka Toys Pressed Steel Group To Include - Large Scale Jeeps And Tipper Trucks plus 5 X Smaller Scale Custom Vans - See-Photo - conditions are Fair overall (9)
Estimate: £60-70



Lot No. 245

Tonka Toys Pressed Steel A Group To Include - Large Scale & Mid-Scale Issues - Breakdown Truck, 3 X Mobile Crane Truck plus others - conditions are Fair (9)
Estimate: £50-70



Lot No. 246

Tonka Toys & Others Pressed & Plastic Steel A Group Of 21 Smaller Scale Issues To Include - Camper, Jeep Breakdown Truck plus others - conditions are Fair (21)
Estimate: £50-70



Lot No. 247

Tonka Toys Pressed & Plastic Steel A Group Of 15 Smaller Scale Issue Beach Buggy's To Include - Various Colours See-Photo - conditions are Fair (15)
Estimate: £50-60



Lot No. 248

Tonka Toys Pressed Steel A Group Of 8 Large Scale Issues To Include Breakdown Truck, Dumper Truck, Mobile Crane Truck plus others - overall Poor to Fair See-Photo (8)
Estimate: £60-70



Lot No. 249

Tonka Toys Pressed Steel A Group Of 13 Mid-Scale Issues To Include - Jeep Pick-Up, Fire Truck, Cement Mixer plus others - conditions are overall are Fair See-Photo (13)

Estimate: £70-80



Lot No. 250

Tonka Toys & Others Pressed Steel & Plastic A Group Of 9 To Include - Large Scale Jeep,s, Wreck Truck, Pick-Up Trucks plus others - conditions are generally Fair - (some display well) See-Photo (9)

Estimate: £60-80



Lot No. 251

Tonka Toys Pressed Steel A Group Of 11 To Include - Large Scale & Mid-scale - Dumper Truck Loader With Front Shovel, Cement Mixer plus others - conditions are generally Poor to Fair See-Photo (11)

Estimate: £70-80



Lot No. 252

Tonka Toys Pressed Steel A Group Of 8 To Include - Large Scale Dumper, Mid-Scale Tipper, Cement Mixer plus others - conditions are Poor to Fair overall See-Photo (8)

Estimate: £60-80



Lot No. 253

Tonka Toys Pressed Steel A Group Of 15 To Include - Mainly Mid-Scale Breakdown Truck, Horse Boxes, Camper plus others - conditions are Poor to Fair overall See-Photo (15)

Estimate: £50-70



Lot No. 254

Tonka Toys Pressed Steel A Group Of 8 To Include - Large Scale Dumper, Mobile Crane Truck, Cement Mixer plus others - conditions are Poor to Fair overall See-Photo (8)

Estimate: £60-70



Lot No. 255

Tonka Toys Pressed Steel A Group Of 8 To Include - Large & Mid-Scale issues Dumper, Car Transporters, Dumper Truck, front loader with Rear Bucket plus others - conditions are Poor to Fair overall See-Photo (8)

Estimate: £60-70



Lot No. 256

Tonka Toys Pressed Steel A Group Of 7 Mainly Large Scale To Include - Front Loader, Cement Mixer, Dumper Truck plus others - conditions are Poor to Fair (7)

Estimate: £60-70



Lot No. 257

Tonka Toys Pressed Steel A Group Of 9 Mainly Large Scale To Include - Winnebago, Low Loader, Breakdown Truck plus others - conditions are Poor to Fair See-Photo (9)
Estimate: £60-70



Lot No. 258

Tonka Toys Pressed Steel & Plastic A Boxed Group To Include Large Scale Mobile Crane, Smaller Scale - Buggy, Jeep plus others - conditions are Fair to Good plus in Poor to Good boxes See-Photo
Estimate: £60-70



Lot No. 259

Tonka Toys & Others - Pressed Steel & Plastic Large scale Issues A Group Of 11 To Include - Dumper Truck, Tractor With Trailer, Car Transporter plus others - conditions are Poor to Fair (11)
Estimate: £60-80



Lot No. 260

Tonka Toys & Others - Pressed Steel & Plastic Smaller Scale Issues A Large Group To Include - Breakdown Truck, Low-Loader With Dozer Load, Cement Mixer, Mobile Crane plus others - conditions are Poor to Fair (qty)
Estimate: £70-80



Lot No. 261

Tinplate A Group Of 5 To Include Chad Valley Saloon Car - Blue, Early Chinese Issue Bus - Metallic red and white - conditions are Fair to Good Plus in Poor to Fair Boxes (1 X Unboxed) - (5)
Estimate: £60-70



Lot No. 262

Tinplate A Group Of 10 Recent Issues To Include - Open-Top Vintage Bus, Motorcycle, Volkswagen Saloon (Beetle) With Surf Boards plus others - conditions are Fair to Good Plus See-Photo (10)
Estimate: £50-70



Lot No. 263

A Very Large Group Of Tinplate & Plastic To Include - Hubley School Bus, Mettoy Tractor, Tonka Jeep, Beach Buggy's, Figures plus much more See-Photo - conditions are generally Poor to Good (large QTY)
Estimate: £80-90



Lot No. 264

Triang Minic Tinplate Clockwork Pre-War 19m Cabriolet - Blue body, chrome chassis and hubs, with "Shell" can on side - Good Plus comes with a poor carded picture box
Estimate: £50-60



Lot No. 265

Triang Minic Tinplate Clockwork Pre-War 4m Sports Saloon - Green body with chrome chassis and hubs, "Shell" Side can - Excellent overall (couple of small marks on bumpers) come with a Good Plus carded picture box

Estimate: £70-80



Lot No. 266

Clifford Series Plastic Austin Healey 100 Sports Car - Blue body with red interior - Good (missing screen) in a Fair box

Estimate: £20-25



Lot No. 267

Tinplate Hardback Reference Books A Useful Group Of 7 To Include "The Art Of The Tin Toy" - David Pressland, "The Minic Book" - Peter Bartok, "British Tin Toys" - Marguerite Fawdry Plus others - conditions are Good Plus (some light fading on covers to Excellent See-Photo (7)

Estimate: £50-60



Lot No. 268

Eheim Trolley Bus Set Ho Scale To Include - Trailer, 2 X Trolleybuses - finished in blue and cream with accessories (not checked for correctness) - Good Plus to excellent in a Fair lift off lid box See-Photo

Estimate: £70-80



Lot No. 269

Eheim 6103 BS Ho Scale Trolley Bus Set To Include - Bendy Trolleybus - Fished in blue and cream with accessories (Not checked for correctness) - Good Plus in a Good (grubby) lift off lid box with instruction leaflet

Estimate: £50-60



Lot No. 270

Eheim 6103 BS Trolley Bus Set Containing 2 X Trolleybuses - Finished in blue and cream with accessories (Not checked for correctness) - Fair to Good Plus in a Fair lift off lid box See-Photo

Estimate: £40-50



Lot No. 271

Ranetta (Spain) REF-107 Submarino (Submarine) SA-107 Plastic body with Motor (Untested) - Blue/grey and with red propeller - overall Good in a Fair lift off box with inner plastic tray See-Photo (approx 43cm)

Estimate: £50-60



Lot No. 272

Taiyo (Japan) Ford Mustang Fastback A Pair Of Tinplate Battery Operated - (1) Red body with strobe lights in rear window, (2) Same As (1) But blue - conditions are Fair still display well (approx 25cm) - (2)

Estimate: £40-50

Auction F035
Tinplate, Slot Cars & Meccano Online Auction on 19 March 2026



Lot No. 273
 Penguin Plastic Battery Operated Avon Cruiser - White and brown - Fair including box See-Photo (17 inch/43 cm)
Estimate: £25-30



Lot No. 274
 Triang Minic Tinplate Clockwork 60M Double Decker Bus - Red body with cream upper windows, chrome grille and surround - Excellent overall bright example in a Poor carded box
Estimate: £60-80



Lot No. 275
 Triang Minic Tinplate Clockwork 25M Open Back Delivery Lorry - Green cab, red back with (sealed Plank) Load, black wheels - Excellent in a Good carded box
Estimate: £50-60



Lot No. 276
 Triang Minic Tinplate Clockwork 73M Articulated Cable Transporter - Red cab and hubs, green trailer with 2 X Cable reels - See-Photo - Good Plus to Excellent lovely example in a Good Plus carded box
Estimate: £70-90



Lot No. 277
 Tinplate & Plastic Related Group Of 3 - (1) Minic Motorways Fire Engine - Near Mint in a Good lift off lid box, (2) Triang Minic Tinplate Clockwork Car - Red and Black - Good (does have large roof mark) in a Poor carded box and (3) Collecting Tin Toys Hard back Book - Near Mint (3)
Estimate: £50-70



Lot No. 278
 Mettoy Tinplate Articulated Tanker "International Oil" - Red, blue and grey with clockwork motor - Good bright example (approx 19cm)
Estimate: £50-60



Lot No. 279
 Marx & Others Tinplate Group Of 4 To Include - open back truck, Tank and 2 X Saloon Cars - conditions are Fair still bright examples (4)
Estimate: £40-60



Lot No. 280
 Tinplate and Plastic Novelty Group including: Twinkling Bug, Hopping Puppy, Yogi Bear, Naughty Duck, plus others; mostly are within Good boxes; untested; Good to Good Plus; (Qty).
Estimate: £50-70

**Auction F035
Tinplate, Slot Cars & Meccano Online Auction on 19 March 2026**



Lot No. 281

Tinplate and Plastic Novelty Group including: Humpty Dumpty, McDonalds toys, Hoppity Dog, plus others; untested; Good to Good Plus; (Qty).

Estimate: £40-60



Lot No. 282

Tinplate and Plastic Novelty Group including: Lucy Lady Bug, Playful Cat, Acrobatic Monkey, Treasure Island paint set; plus others, some are still within Good original boxes, untested otherwise Good to Good Plus; (Qty).

Estimate: £50-70



Lot No. 283

Mixed Tinplate vehicle group including: Marx Jungle Patrol Jeep, Thunderbird, Ferrari Racing Car, Shooting Spring Car, plus others; still within original boxes, untested otherwise Good to Good Plus; (Qty).

Estimate: £80-100



Lot No. 284

Mixed Tinplate vehicle group including: Marx Fire Chief Car, Garage, Mercedes-Benz, Cement Mixer, plus others; some are still within original boxes, untested otherwise Good to Good Plus; (Qty).

Estimate: £80-100



Lot No. 285

Mixed Tinplate Airplane Group including: Flying Phantom, City Airways Helicopter, Touring Airplane, plus others; within Good original boxes, untested otherwise Good to Good Plus; (Qty).

Estimate: £50-70



Lot No. 286

Mixed Tinplate Airplane Group including: Sparkling Jet Plane, Marx Stratojet, Commodore, plus others; some are within Good original boxes, untested otherwise Good; (Qty).

Estimate: £60-80



Lot No. 287

Clockwork keys x twenty-six, various sizes including; Triang, Gama, Schuco, plus others; Good, (26).

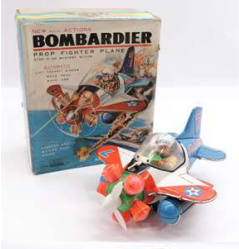
Estimate: £20-40



Lot No. 288

Marx Toys (USA) "Skycruiser" large tinplate friction drive Transport Plane, in the blue/silver of Strato Airlines, with "Stratoliner 700" to sides, friction drive to the undercarriage wheels and fitted with 4 x plastic propellers, some age related wear otherwise Good, 18"/46cm wingspan.

Estimate: £50-70



Lot No. 289

Waco (Japan) Bombardier Prop Fighter Plane, tinplate, blue/white/red tinplate aircraft with plastic engine cowl and propeller, opening clear plastic cockpit with tinplate Pilot figure, battery operated (untested but has clean battery compartments), within Good box (creases), age related wear otherwise Good Plus.
Estimate: £40-60



Lot No. 290

Triang 1/20th scale 2.4 litre Jaguar Saloon, red plastic body with ivory interior, battery operated (untested but has clean battery compartment), some lose to license plate decals, within Good box (edge wear and surface marks), Good.
Estimate: £40-60



Lot No. 291

Triang Minic 1/20th scale MG Series MGA Sports Car, red plastic body with off white interior, plated parts, damaged windscreen, within Good illustrated box with inner card display base; damaged windscreen otherwise Good.
Estimate: £30-40



Lot No. 292

Victory Models Standard Ten, 1/18th scale, black plastic body, red tinplate interior, chrome trim, windows have displaced but are present, battery operated (untested, some corrosion to battery compartment but connection points are clean), within Fair Plus box (MISSING opening flaps), a little dusty otherwise Good.
Estimate: £40-60



Lot No. 293

Triang Minic Sunbeam Rapier, 1/20th scale, red plastic body, cream tinplate interior, plated parts, clean battery compartment to underside (untested), within Good box complete with inner card plinth; over all Good Plus, 8"/20cm long.
Estimate: £60-80



Lot No. 294

Telsalda plastic Farm Tractor and Tipping Trailer, plastic red tractor, blue trailer, detachable raves, figure driver, within Good Plus box (some edge wear), still with original polythene bags; Mint.
Estimate: £50-70



Lot No. 295

Telsalda Aston Martin with Speed Boat on Trailer, plastic, red Aston Martin, blue boat and trailer, driver figure, within Good Plus box (slight edge wear and some foxing), still with original polythene bags, Mint.
Estimate: £50-70



Lot No. 296

Telsalda Aston Martin with Speed Boat on Trailer, plastic, light blue Aston Martin, dark blue boat and trailer, driver figure, within Good Plus box (slight edge wear and some foxing), still with original polythene bags, Mint.
Estimate: £50-70



Lot No. 297

Telsalda Humber Sceptre Sports Saloon, blue plastic model with chrome trim and dark interior. Opening boot and windows (MISSING driver window). Includes aerial, roof rack, spare wheel and luggage; battery operated head-lamps (untested), Good Plus illustrated box (creases and small tears) with inner plastic wrapping, Excellent Plus; length 8"/20cm.

Estimate: £50-70



Lot No. 298

Telsalda Humber Sceptre Sports Saloon, green plastic model with chrome trim and red interior. Opening boot and windows. Includes aerial, roof rack, spare wheel and luggage; battery operated head-lamps (untested), Good Plus illustrated box (creases and small tears) with inner plastic wrapping, Excellent Plus; length 8"/20cm.

Estimate: £50-70



Lot No. 299

Telsalda Humber Sceptre Sports Saloon, gray plastic model with chrome trim and red interior. Opening boot and windows. Includes roof rack, spare wheel and luggage, MISSING aerial; battery operated head-lamps (untested), Good Plus illustrated box (creases and small tears) with inner plastic wrapping, Excellent Plus; length 8"/20cm.

Estimate: £50-70



Lot No. 300

Telsalda Humber Sceptre Sports Saloon, green plastic model with chrome trim and red interior. Opening boot and windows. Includes aerial, roof rack, spare wheel and luggage; battery operated head-lamps (untested), Good Plus illustrated box (creases and small tears) with inner plastic wrapping, Excellent Plus; length 8"/20cm.

Estimate: £50-70



Lot No. 301

Telsalda Humber Sceptre Sports Saloon, blue plastic model with chrome trim and dark blue interior. Opening boot (boot lid had snap from hinges but is present) and windows. Includes, roof rack, spare wheel and luggage, MISSING aerial; battery operated head-lamps (untested), Good illustrated box (creases and small tears) with inner plastic wrapping, Good; length 8"/20cm.

Estimate: £30-50



Lot No. 302

Hong Kong Plastic Racing Cars x twelve, red, blue and green; six are battery operated (untested), six are friction powered, within Good boxes (edge wear and foxing); Good Plus to Excellent; (12).

Estimate: £50-70



Lot No. 303

Hong Kong Plastic Racing Cars x twelve, red, blue and green; six are battery operated (untested), six are friction powered, within Good boxes (edge wear and foxing); Good Plus to Excellent; (12).

Estimate: £50-70



Lot No. 304

Hong Kong Plastic Racing Cars x nine, friction powered, within Good boxes (edge wear and foxing), Good Plus to Excellent; (9).

Estimate: £30-50



Lot No. 305

Japanese Tinplate Vehicle Trio including: (1) TPS The Swinger, tinplate Mustang, battery operated (untested but has clean battery compartment), within Good Plus box, 10.5"/27cm; (2) Alps Highway Patrol Police Car, tinplate Lincoln, battery operated (untested but has clean battery compartment), within Good box, 11"/28.5cm; (3) Taiyo tinplate Mustang, battery operated (untested but has clean battery compartment), 10"/26cm; age related wear (scuffs and scratches) otherwise Good; (3).

Estimate: £60-80



Lot No. 306

Mixed Space Toy Group including: Space Telephone, Space Dog, Future Fly Saucer Car, Space Rocket, Mettoy Burp gun (paint loss); unchecked for completeness or correctness, within Fair Plus to Good original boxes, overall Good; (Qty).

Estimate: £50-70



Lot No. 307

Robot and Space Toy Group including: Anker Spielzeug Jupiter space vehicle, Monster Robot, Sentinel Robot; plus others, unchecked for completeness or correctness, untested, some are a little dusty otherwise Good; (Qty).

Estimate: £60-80



Lot No. 308

Codeg (UK) Space Shooting Range. Rare clockwork powered tinplate shooting toy. Tinplate spaceships revolve along a system of belt and pulleys across the tinprinted arcade style shooting range (untested). A red spring loaded ball bearing gun is attached to a separate tinprinted base to fire at the passing space ships. MISSING attaching clips to join the gun base to the shooting range, the larger section has been bent out of space and will acquire attention/repair, dusty otherwise Good, width 13.75"/35 cm.

Estimate: £80-120



Lot No. 309

Wells Brimtoy (UK) Horse Box, Bedford S-type cab in blue plastic and red tinplate, Blue and yellow tinplate body with tinprinted detailing showing horse and attendant, Drop-down rear door/ramp, tinplate wheels. Fixed key clockwork piano wire motor (untested), within Poor box, some rubs and scratches but generally Good, Length 9"/23cm.

Estimate: £30-50



Lot No. 310

Mixed Tinplate and Plastic Novelties including: Hopping Kangaroo, Bandai Musical Ice Cream Truck, Triang Minic Puppy and Spider, Triang Minic Kitty and Butterfly; plus others most are within Good original boxes; untested, overall Good to Good Plus; (Qty).

Estimate: £60-80



Lot No. 311

Mixed Tinplate & Plastic Train group including: Hornby, Lone Star, Marx, plus others, some are within Fair Plus to Good original boxes; overall Good; (Qty).

Estimate: £50-70

Lot No. 312

Mixed Tinplate and Plastic Boat group including: Sutcliffe Models Tiger Speed Boat, Scalex Boats Pretoria Castle Ocean Liner, Triang Cargo Ship, plus others, most are within Good original boxes; untested, overall Good (age related wear); (Qty).

Estimate: £60-80



Lot No. 313

Mixed Tinplate and Plastic Tank Group including: Crescent Army Gun, Norma M-48 Army Tank, Howitzer Cannon, various plastic vehicles, plus others, some are within Good original boxes; untested, overall Good; (QTY).

Estimate: £60-80



Lot No. 314

Mixed Tinplate & Plastic Novelty Group including: Old Style Cartoon Car, Jolly Pianist, Duck Shooting, plus others; untested; some are within Fair Plus to Good original boxes; overall Good, (Qty).

Estimate: £40-60



Lot No. 315

Mixed Tinplate & Plastic Novelty Group including: penny toys, planes, cars, figures, plus others, untested, some are within Fair Plus to Good packaging; overall Good; (Qty).

Estimate: £40-60



Lot No. 316

Tinplate and Plastic mixed group including: Playcraft Play Town Construction Kit, Fort Davy Crockett, Mettoy signal storey house, Playcraft Navy Blinker Code-Lights, plus others; unchecked for completeness or correctness, untested, some are within Fair Plus to Good packaging, overall Good; (Qty).

Estimate: £40-60



Lot No. 317

Mixed Tinplate and Plastic vehicle group including: Lone Star Crane, Casdon Mobile Grab Crane, Fire Engine, plus others; untested, within Good original boxes; overall Good; (Qty).

Estimate: £50-70



Lot No. 318

Tinplate & Plastic Racecar group including: Hi-Speed Racer, Over and Under Speedway Road Race, Ferrari 250 GTO, Blue Bird, plus others; untested, with Good original boxes; overall Good; (Qty).

Estimate: £60-80



Lot No. 319

Tinplate & Plastic mixed car group including: Minister Delux, Marx Limousine, Blue Box Service Station, plus other, unchecked for completeness or correctness, untested, most are still with Good original boxes, overall Good; (Qty).

Estimate: £50-70



Lot No. 320

Tinplate and Plastic mixed vehicle group including: World Cup News Car, Marx Electric Car, Samshin (Japan) Police Car, plus others; unchecked for completeness or correctness, untested, some are within Good original boxes, overall Good; (Qty).

Estimate: £50-70



Lot No. 321

Tinplate & Plastic construction vehicles including: Clifford Road Roller, Mystery Tractor Handy Hank, Caterpillar 977K Traxcavator and Marx Tractor; untested, some are within Good original boxes; overall Good; (4).

Estimate: £30-50



Lot No. 322

Pressed Steel mixed group including Sutcliffe Crane, Triang Truck, plus others, age related wear (rust, scuffs and scratches), overall Fair Plus to Good; (4).

Estimate: £20-40



Lot No. 323

Joustra and Mettoy Plane Group including: (1) Joustra (France) Piper Club Plane, within Good box; (2) Joustra Avion Rallye, within Fair box; (3) Joustra Boeing 727 Intercontinental; (4) Mettoy Vickers Viscount; (5) Mettoy camouflage plane; age related wear (some have rust spots); otherwise Good; (5).

Estimate: £40-60



Lot No. 324

Tinplate & Plastic Plane Group including: Bristol 188 Jet, Jet Airliner, American Airlines, plus others; untested, unchecked for completeness or correctness, overall Good; (Qty).

Estimate: £40-60



Lot No. 325

Mixed Tinplate/Plastic Plane and Helicopter Group including: Air Hawk, Amphibious Flying Boat, Arnold Helicopter, Meccano Plane, plus others; untested, unchecked for completeness or correctness; otherwise Good; (Qty).

Estimate: £50-70



Lot No. 326

Tinplate Plane Group including: (1) Wells-Brimtoy Wonderjet, within Good box; (2) Technofix GE 283 plane; (3) Mettoy Firebird; (4) Unmarked Plane; untested, age related wear otherwise Good; (4).

Estimate: £40-60



Lot No. 327

Schuco (Germany) Elektro Radiant 5600, tinplate Passenger Aircraft in "BOAC" cream/blue/silver livery, battery operated (untested but has clean battery compartment), within Fair box, MISSING cockpit window, age related wear (scuffs and scratches) otherwise Good, 19"/48cm wingspan.

Estimate: £60-80



Lot No. 328

Schuco (Germany) Mixed Group including: (1) Micro Racer # 1045 Ford, within Fair Plus box (MISSING opening flaps); (2) Ambulance, # 3043; (3) Lasto Lorry and Trailer, # 3042; (4) Garage, # 1500, paint loss and rust spots; (5) Tippy Scotty Dog, # 990, with key; some age related wear otherwise Good; (5).

Estimate: £60-80



Lot No. 329

Triang Minic Group including: (1) Push and Go Presentation Set; (2) Push and Go Army Presentation set; within Poor box; sets are mixed up and may contain extra vehicles, unchecked for completeness or correctness; over all Good; (Qty).

Estimate: £60-80



Lot No. 330

Triang Minic Group including: (1) Push and Go Interplanetary Research Unit, appears to have incorrect contents, within Fair box; (2) Gloster Javelin M 102, within Good box; (3) Minic Motorway cars x five; (4) Minic pair (Flat bed truck, Brewery Truck); age related wear, untested, unchecked for completeness or correctness; overall Good; (Qty).

Estimate: £80-100



Lot No. 331

Yanomam Police Command Car, tinplate, battery operated (untested but has a clean battery compartment), age related wear (scuff, scratches and some small rust spots), 14.5"/37.5cm; also includes German Made tinplate Elephant (legs have been glued in place) and Hong Kong Plastic Bunny carriage; over all Good; (3).

Estimate: £40-60



Lot No. 332

Tinplate Toys EMPTY boxes, Fair Plus to Good; (Qty).

Estimate: £5-10



Lot No. 333

Vintage Money Banks and Tins including: Post Office Saving Banks; District Bank No 39350; District Bank No 6779; plus others, age related wear over all Good; (9).

Estimate: £20-40



Lot No. 334

Triang (UK) large pressed steel Glasgow Bus, scarce example, circa 1962, green and cream exterior, black interior, original decals (including Glasgow Corporation coat of arms), grill is detached but present, large scratches and paint loss throughout otherwise Fair Plus to Good, 22.5"/58cm.

Estimate: £100-140



Lot No. 335

Kranwagen made in West Germany, blue plastic cab, red mounted crane, black chassis, within Good Box, untested, overall Good to Good Plus, 12"/31cm.

Estimate: £30-50



Lot No. 336

Tinplate pair including: (1) Hornby O Gauge Train Set No. 45, with Locomotive & Key, 3x Wagons, Track, within Fair box; (2) Chinese made friction powered car; age related wear throughout; Fair Plus to Good; (2).

Estimate: £20-40



Lot No. 337

Marx Plastic Vehicle pair including: (1) Tricky Tommy Tractor; (2) Junior Bulldozer; both are battery operated (untested but have corrosion in battery compartments), Fair to Good; (2).
Estimate: £10-20



Lot No. 338

Mixed Tinplate Group including: Minister Delux pair (red and yellow); Mechanical Lucky Mouse; Japanese made Drinking bear; plus others; untested, within Good to Good Plus boxes; overall Good to Good Plus; (Qty).
Estimate: £50-70



Lot No. 339

Ke-Lo Atom Splitter Ray Gun, repeating cap pistol, red and grey plastic, within Fair box (glue repair, small tears and some pencil notations, some factory molding errors (please see photographs) otherwise Good Plus.
Estimate: £180-220



Lot No. 340

Schuco (Germany) 4002 Tacho-Examico, tinplate, red with red interior, steerable front wheels, glue repair to steering wheel, some spidering to paint and a few scuffs mostly to underneath, otherwise Good.
Estimate: £40-60



Lot No. 341

Lehmann Zikra Zebra Cart, tinplate, fixed key mechanism, some age related wear otherwise Good Plus.
Estimate: £100-140



Lot No. 342

JNF (Germany) Condor Sports Car, 1950's, clockwork (MISSING key), steerable front wheels, some paint loss otherwise Good, 7.5"/19.5cm.
Estimate: £20-40



Lot No. 343

1950's Japanese U.S Army Radar Truck, tinplate, fixed key mechanism, some scuffs and scratches, some areas of repainting to cab, otherwise Good, 5"/13cm.
Estimate: £40-60



Lot No. 344

Triang Minic Jeep pair, tinplate, clockwork (untested and MISSING keys), in two different shades of green, Good Plus; (2).
Estimate: £20-40



Lot No. 345

Woolbro (Hong Kong) Ford Capri, blue plastic, friction powered, within Excellent Box, Excellent.

Estimate: £30-50



Lot No. 346

SFA (France) Police Motorcycle with Sidecar, 1930's, tinplate, clockwork (untested, MISSING key), scuffs scratches throughout otherwise Good.

Estimate: £40-60



Lot No. 347

The Speed King Police Motorcyclist, made in England, Wells Brimtoy or similar, tinplate, friction powered, within Good box (some creases), small scratches throughout otherwise Good to Good Plus.

Estimate: £30-40



Lot No. 348

Kohler (Germany) Dog, tinplate, clockwork (untested, MISSING key), within Good Box (some small tears), some small scuffs throughout otherwise Good to Good Plus.

Estimate: £40-50



Lot No. 349

Louis Marx Pressed Steel Police Siren Car, green, rubber tyres, fixed key mechanism, scuffs and scratches throughout otherwise Good, 14"/36cm

Estimate: £80-120



Lot No. 350

JNF (Germany) Mercedes Silver Arrow Racing Car, 1950's, tinplate, original composition driver, clockwork (untested, MISSING key), rubber tyres, scuffs and scratches throughout otherwise Good, 10.5"/27cm.

Estimate: £50-70



Lot No. 351

Nomura (Japan) Fire Chief Car, tinplate, friction powered, rubber wheels, moving windscreen wipers, revolving siren to roof, age/play wear (scuffs, scratches and tarnish to plated parts) otherwise Good, 16"/41cm.

Estimate: £70-90



Lot No. 352

Triang Minic Pre War Vauxhall Cabriolet, tinplate, clockwork (untested, MISSING key), green with chrome running boards, some paint loss mostly to roof otherwise Good.

Estimate: £30-50



Lot No. 353

Triang Minic Pre War Ford Light Van, tinplate, clockwork (untested, MISSING key), green, cracks to tyres, small chips and scratches throughout, within Fair box (tape repair and MISSING opening flaps, otherwise Good.

Estimate: £30-50



Lot No. 354

Triang Minic George VI Royal Mail Van, tinplate, clockwork (untested, MISSING key), red with George VI decals, within Good to Good Plus box, chips and scratches throughout otherwise Good.

Estimate: £30-50



Lot No. 355

Triang Minic Pre War Royal Mail Van, tinplate, clockwork (untested, MISSING key), red with decals, some cracks to tyres, within Poor remains of box, some paint loss to back bumper otherwise Good,

Estimate: £30-50



Lot No. 356

Jouef (France) Racing Car, tinplate, clockwork (untested, MISSING key), red with racing number 6, MISSING steering wheel, area of repainting to bonnet, scuffs and paint chips throughout, still displays well, otherwise Good, 13"/33.5cm.

Estimate: £30-40



Lot No. 357

Geobra Scooter with Sidecar, 1950's, plastic, original composition rider, clockwork (untested), with key, some rust spots to tinplate base of scooter (please see photographs), otherwise Good.

Estimate: £180-220



Lot No. 358

Russian Motorcycle with Sidecar, tinplate, clockwork (untested, MISSING key), age related wear otherwise Good.

Estimate: £20-40



Lot No. 359

Schuco No.5311 EAG Ingenico Garnitur includes; Ingenico 5335, control rods, key, battery pack; untested, within Good box (edge wear), otherwise Good.

Estimate: £130-150



Lot No. 360

Japanese Novelty Toy pair including: (1) Wonder Mimic Monkey, within Good box (one opening flap has detached but is present); (2) Pikko pecking Goldfinch, within Good box; both are clockwork (untested, MISSING keys); Good to Good Plus; (2).

Estimate: £50-70



Lot No. 361

JNF (Germany) Mercedes Adenauer M-300 Battromot Saloon, tinplate, steerable front wheels, red with tartan interior, some small paint chips, spidering to paint on the underside, otherwise Good, 9.5"/24.5cm.
Estimate: £70-90



Lot No. 362

Wuco (Germany) Dock Worker, tinplate, clockwork (untested, MISSING key), within Good original box (some tears), scuffs and scratches throughout otherwise Good.
Estimate: £100-140



Lot No. 363

Tinplate Sport Car pair including: (1) Clover Toy (Korea), E-Type Jaguar, green tinplate with red interior, friction powered, 7"/18.5cm; (2) Japanese made Alfa Romeo Sports car, red tinplate with yellow/orange interior, MISSING motor (wires have been cut at boot please see photographs), 6"/15.5cm; both have age/play wear (scuffs, scratches and some spidering to paint); display well, overall Good; (2).
Estimate: £20-40



Lot No. 364

Tinplate Van Trio including: (1) German Post Van, Bakelite cab, tinplate chassis and back, clockwork (untested, MISSING KEY), MISSING back door, 8"/21cm; (2) French van and Limousine pair, push along, both 5"/13cm; age related wear (scuffs and scratches), otherwise Good; (3).
Estimate: £30-40



Lot No. 365

Tinplate 1930's Trio including: (1) German Turnover aero plane, fixed key mechanism; (2) Kuramochi (Japan) clown, fixed key mechanism; (3) Japanese Flat Bed Truck, clockwork (untested, MISSING key), 4"/10.5cm; age/play wear throughout otherwise Good; (3).
Estimate: £50-70



Lot No. 366

Hong Long Plastic & other Disney Group including: (1) OK toys Popeye & Olive Oyl, friction powered rowing boat; (2) Hong Kong Poseable Goofy; (3) Tinplate Mickey Mouse plates and cup; (4) Mickey Mouse Post Office Tin, dents and splits to front; overall Good; (Qty).
Estimate: £10-30



Lot No. 367

Lehmann (Germany) Gustav the Miller novelty, tinplate toy featuring windmill atop a metal pole with a Gustav figure climbing it and collecting a heavy sack of flour, operated by rotating the windmill sails, within Fair Plus box, some age related wear otherwise Good to Good Plus, 18.5"/47cm tall.
Estimate: £60-80



Lot No. 368

Tinplate & plastic vehicle group including: Hong Kong Plastic Buses; WoolBro Farm Tuck; Fire Chief car; plus others; untested, some are within Good boxes, overall Good to Good Plus; (Qty)
Estimate: £30-40



Lot No. 369

Tipp & Co Volkswagen Camper Van, tinplate, friction powered, off white, black red exterior, tinprinted interior, opening side doors, boot and sunroof, rubber tyres, within Good box (MISSING some opening flaps and slight tobacco odour), some play wear and spidering to paint in places otherwise Good to Good Plus, 9.5"/24.5cm.

Estimate: £280-320



Lot No. 370

Mixed Plastic Boat Group including: (1) Marx Hovercraft, within Good Box; (2) Blue Box Excursion Yacht, within Fair Plus box; (3) Hong Kong Amphicar; (4) Triang Cabin Crusier; (5) German Made Car Ferry; untested; over all Good; (5).

Estimate: £30-40



Lot No. 371

Mettoy Post Office Telephones Morris Van, die cast, clockwork (untested, MISSING key), rubber tyres, green with decals to sides, ladders to roof, MISSING handle to back door, within Fair Plus to Good box (edge wear, small tears) some chips throughout most paint loss to roof; otherwise Good.

Estimate: £180-220



Lot No. 372

Arnold (Germany) British Solider On Motorcycle, 1930s, tinplate, clockwork (untested, MISSING key), printed tinplate design, MISSING base plate and cover to headlight, age related wear (scuff, scratches and rust spot throughout), otherwise Fair Plus to Good, 8"/21cm.

Estimate: £50-70



Lot No. 373

Triang Minic Pre War Cabriolet 6M, tinplate, clockwork (untested, MISSING key), brown, chrome running boards, rust spots to back bumper, flat spots to tyres, chips to paint throughout mostly to roof, otherwise Good.

Estimate: £30-50



Lot No. 374

Mixed Group of Tinplate Toy Empty Boxes, mostly Japanese; Poor to Good; (Qty).

Estimate: £10-30



Lot No. 375

Mixed Tinplate Group including: Spiel-Nutz Micro Racers, within Good boxes; Brimtoy repair Lorry; Chad Valley; Penguin Ford Sedan; plus others; untested, unchecked for completeness or correctness; overall Good; (Qty).

Estimate: £50-70



Lot No. 376

Timpo-Tortoise, Bakelite, friction powered, within Good box (age wear and some small tears), Good Plus, 4"/10.5cm.

Estimate: £30-50



Lot No. 377

Distler (Germany) Electro Matic 7500 Porsche Sports Car, tinplate construction, rubber wheels, plated parts, within REPRODUCTION box, battery operated (untested), some scuffs and scraps to the paint work, overall Good, 10"/25cm long.

Estimate: £80-120



Lot No. 378

Triang (Lines Bros UK) Tractor Pedal Car with Trailer, 1966, metal and orange vacuum formed plastic, rubber tyres, rust spots throughout, some stuffs to paint on plastic components, tractor 28"/71cm, trailer 27"/69cm long, overall Good. PLEASE CONTACT US FOR A POSTAGE QUOTE.

Estimate: £80-100



Lot No. 379

Triang (Lines Bros UK) Pedal Train, 1950, very similar to Indian Chief Train sold By Cyclops Australia (which was owned by Triang), metal and formed plastic front, rubber tyres, scuffs and scratches, areas of repainting, displays well, overall Fair Plus to Good, 34"/87cm long.

Estimate: £80-120



Lot No. 380

Triang Minic electric Rolls Royce Silver Cloud, 1/20 scale, plastic, battery operated (untested but has clean battery compartment), within Good box (edge wear), Good Plus to Excellent.

Estimate: £60-80



Lot No. 381

Triang Minic Electric Vauxhall Victor, plastic, battery operated (untested but has clean battery compartment, one small amount of corrosion to one connection point), within Fair Plus box (tears), rubbing to back bumper otherwise Good to Good Plus.

Estimate: £80-100



Lot No. 382

Tinplate & Plastic mixed group including: Dayfran Rolls-Royce; Woggle the Walking Horse; Triang Kitty and Butterfly, Woolbro Dump Truck; plus others, within Fair Plus to Good boxes, unchecked for completeness or correctness (Trik-Trak only contains decals no car), overall Good to Good Plus; (Qty).

Estimate: £60-80



Lot No. 383

Tinplate & Plastic Military Group including: Marx Assault Tank; Waco (Japan) Anti-Aircraft Tank; Woolbro Police Patrol; plus others; unchecked for completeness or correctness, within Fair Plus boxes, overall Good; (5).

Estimate: £40-60



Lot No. 384

Daishin (Japan) M-3 Heavy Machine Gun, tinplate, battery operated (untested but has clean battery compartment) shell ejecting, bullet firing action, life-like Ack-Ack noise, folding tripod, missing trigger button, within Good Plus box, also includes Hong Kong Plastic space gun, overall Good Plus to Excellent; (2).

Estimate: £30-50



Lot No. 385

Technofix (Germany) or similar XZ105 tinplate Aircraft, friction drive motor, 11.5"/29cm long; plus others including a construction kit style Rocket; over all Good; (5).

Estimate: £50-70



Lot No. 386

Marx Toys (USA) Skycruiser Transport Plane, tinplate blue/silver of Strato Airlines, with Stratoliner 700 to sides, friction powered, two x plastic propellers, aged related wear (scuffs, scratches and some rust spots to underside) otherwise Good, 18"/46cm wingspan.

Estimate: £30-50



Lot No. 387

Meccano group of three "Crazy Inventors" Motor Buggy (Set 7651) construction kits, each boxed, described on packaging as including a real clock and 3V motor, two sets are sealed so assumed Mint, one has been opened, contents unchecked for completeness. Conditions are Excellent Plus to Mint.

Estimate: £50-70



Lot No. 388

Meccano & Trix Assortment of parts to include instruction guides, Hornby-Meccano clockwork items plus track & assortment of struts, plates and pulleys. and Built landing craft boat and electrical items, Conditions are Fair to Good.

Estimate: £50-70



Lot No. 389

Meccano construction kits group comprising Marks & Spencer Motorised Fairground Set (23 models, 470+ parts), boxed, together with Meccano Action Control Set (3 models, infra-red remote control, 385 pieces), boxed, contents unchecked for completeness, boxes show light storage wear.

Estimate: £40-60



Lot No. 390

Meccano construction kits group comprising Marks & Spencer Meccano Vintage Construction Set (builds 4 models, over 100 pieces), Meccano Meta-Cruiser Set (No. 4820, 8-12 years, 171 parts), Marks & Spencer Maxi Motorbike Set (60+ parts) and Marks & Spencer Meccano Stephenson's Rocket Construction Set (over 540 pieces), all boxed, contents unchecked for completeness, boxes show light to moderate storage wear.

Estimate: £50-70



Lot No. 391

Meccano mixed loose components group comprising assorted perforated plates, angle girders and strips in red, yellow and green, cylindrical boiler sections, brass gears and collars, pulleys, rubber tyres and wheels, together with quantity of nuts, bolts and washers in plastic bags, overall condition appears Fair to Good.

Estimate: £40-50



Lot No. 392

Meccano mixed accessories group comprising Gears Outfit 'B' with quantity of brass gears and chain, Power Control Unit with lead and plug, boxed clockwork motor unit, together with Meccano manuals and ephemera, housed in associated boxes, contents unchecked for completeness, overall condition appears Good to Good Plus.

Estimate: £40-60



Lot No. 393

Meccano Outfit No.6 construction set, comprising quantity of red and green perforated plates, girders, wheels and fittings in fitted tray within original box base and lid, together with Instructions for Outfit No.6 booklet and a boxed Vogue Construction Set with printed contents label, Note from vendor suggests Outfit 6 appears mostly complete, however this is unchecked, overall condition appears Good with some storage wear to boxes.

Estimate: £50-70



Lot No. 394

Meccano Elektrikit accessory sets, two examples, each comprising fitted yellow plastic tray with coils, armatures, pulleys, wiring, plates and electrical components, in original illustrated lift-off lid boxes marked "For building electrical models" for use with Meccano Standard Outfit (No.3 or larger), with book of electrical models, contents appear largely complete but unchecked, condition appears Excellent in Good boxes with some storage wear.

Estimate: £60-80



Lot No. 395

Meccano Elektrikit accessory sets, two examples, each comprising fitted yellow plastic tray with coils, armatures, pulleys, wiring, plates and electrical components, in original illustrated lift-off lid boxes marked "For building electrical models" for use with Meccano Standard Outfit (No.3 or larger), with book of electrical models, contents appear largely complete but unchecked, condition appears Excellent in Good boxes with some storage wear.

Estimate: £60-80



Lot No. 396

Collection of K'Nex construction sets, predominantly boxed small vehicle and model kits (various reference numbers), including Motorcycles set, multiple 3-in-1 and 5-8 age range models, and a larger Power 3x motorised set (Ref. 25135) with carry case and partial contents, together with loose K'Nex pieces in bags; contents unchecked for completeness, Boxes appear Excellent Plus to Near Mint.

Estimate: £40-60



Lot No. 397

Large quantity of loose Meccano components, comprising assorted red and green perforated plates, angle girders, strips, wheels, pulleys, axles and fittings, contained within a cardboard box, unchecked for completeness and with visible surface wear and oxidation consistent with age.

Estimate: £30-50



Lot No. 398

Modern Meccano components, comprising predominantly blue and yellow perforated plates, girders and strips, together with red plates, large spoked wheels, pulleys, gears, fan blades and a quantity of brass collars and fittings, as a mix of Liverpool and French market production, plus various copies of Constructor Quarterly magazine; condition generally Good.

Estimate: £60-80



Lot No. 399

Group of Meccano construction sets, comprising Motorised Set No.3 (two boxed examples, one with tape-repaired box), Meccano Set No.4 (275 parts for real working models, boxed), modern Meccano Set No.3 (39 models, with instructions), Meccano Outfit No.6 box (worn), and a boxed Meccano Microlite set (Marks & Spencer exclusive), contents unchecked for completeness, boxes with varying degrees of wear, some heavy.

Estimate: £40-60



Lot No. 400

Meccano Vintage Bi-plane inspired design similar to the handley page 1930s heracles. Conditions are Fair with some bolts & one prop missing, overall assembly appears complete.

Estimate: £50-70



Lot No. 401

Meccano Outfit No 3 & Wooden Chest, sets appear incomplete but unchecked. Conditions are Poor to Fair with Fair to Good packaging.

Estimate: £50-70



Lot No. 402

Meccano mixed lot of plates, girders and components including assorted red, green and yellow flat plates, perforated strips, lattice girders and curved sections, Condition is Poor to Good with signs of use.

Estimate: £40-50



Lot No. 403

Meccano mixed lot of components including red, green and yellow circular plates, perforated strips, flat plates, cylindrical drums, wheels with tyres, brass pulleys and assorted fittings, overall condition appears Fair to Good with signs of age and use.

Estimate: £50-70



Lot No. 404

Meccano mixed lot of components including green perforated strips and girders, red and blue rectangular plates, assorted circular plates and discs, brass pulleys and wheels, gears and plastic plates, contained within period Kidax boxes, overall condition appears Fair to Good with signs of age and use.

Estimate: £50-70



Lot No. 405

Meccano mixed lot of components including green perforated strips and girders, red rectangular plates, blue and red boxed sections, red and yellow triangular plates and assorted flat strips, overall condition appears Fair to Good with signs of age and use.

Estimate: £50-70



Lot No. 406

Meccano group of Long strips of 49 holes, around 30 in total. Conditions are generally Fair to Good Plus.

Estimate: £50-70



Lot No. 407

Bayko constructors parts with assorted roof components, floor parts, joining plates, Doors and Windows plus other components, unchecked for completeness.

Estimate: £40-50



Lot No. 408

Meccano mixed lot including clockwork motors loose electric motors, springs, overall condition appears Fair to Good with signs of age and use.

Estimate: £20-30



Lot No. 409

Meccano mixed lot of components including numerous wheels with rubber tyres, assorted circular plates in red and blue, bagged smaller tyres, green perforated strips and girders, and a quantity of brass gears (Contrate etc), overall condition appears Fair to Good with signs of age and use.

Estimate: £40-60



Lot No. 410

Meccano mixed lot of components including green perforated strips and girders, red and blue rectangular plates, brass worm gears, brass gears, pulleys, bagged nuts and bolts, circular saw blades and assorted fittings, overall condition appears Fair to Good with signs of age and use.

Estimate: £40-60



Lot No. 411

Meccano Pre-war circa 1920s outfit Accessories packs 0a & 2a. Unchecked for completeness. Conditions are generally Fair in Poor to Fair boxes.

Estimate: £40-60



Lot No. 412

Meccano Pre-war circa 1920s outfit Accessories packs 1 & 1a. Unchecked for completeness. Conditions are generally Fair in Poor to Fair boxes.

Estimate: £40-60



Lot No. 413

Meccano mixed lot of components including numerous red and blue circular plates with rubber tyred wheels, red rectangular plates, triangular plates in red, blue and yellow, perforated strips and assorted fittings & tools ,overall condition appears Fair to Good with signs of age and use.

Estimate: £50-70



Lot No. 414

Meccano Vintage group of empty boxes comprising Accessory Outfit No.5a, Accessory Outfit No.5a, Gears Outfit and Meccano Outfit No.1, all empty, overall condition appears Fair with wear and age-related creasing.

Estimate: £20-30



Lot No. 415

Tri-ang and Meccano group including Tri-ang P.4-5 Power Controller, Meccano Power Control Unit in original box, Hornby Dublo Transformer No.1 in box, Hornby Dublo 12 Volt Transformer in blue box, associated cables, overall condition appears Fair with signs of age and use.

Estimate: £30-40



Lot No. 416

Meccano mixed lot of components including numerous brass gears and pinions, larger gear wheels, rubber tyred wheels with red and blue hubs, blue rectangular plates, green perforated strips, base plates and assorted fittings, some bagged, overall condition appears Fair to Good with signs of age and use.

Estimate: £50-70



Lot No. 417

Meccano mixed lot of components including green perforated strips, angle brackets and plates, brass gears and pinions, red circular plates, assorted small fittings, rods and strings, some bagged, overall condition appears Fair to Good with signs of age and use.

Estimate: £50-70



Lot No. 418

Meccano mixed lot of components including assorted green angle brackets and plates, bagged metal rods and axles with red plastic ends, brass gears and pinions, nuts and bolts, wheels with rubber tyres and various small fittings, overall condition appears Fair to Good with signs of age and use.

Estimate: £50-70



Lot No. 419

Meccano mixed lot of components including large red and blue circular rings and spoked wheels, green cylindrical drums, green perforated strips and curved plates, brass pulleys, small fittings and bagged nuts and bolts, overall condition appears Fair to Good with signs of age and use.

Estimate: £50-70



Lot No. 420

Meccano and Bayko mixed lot including Meccano tins No.1, No.3, No.4 and No.8 boxes, Bayko No.11 box and assorted Meccano tins, together with a quantity of green perforated strips, brass gears, pulleys, wheels and assorted components, overall condition appears Fair with wear and age-related marking.

Estimate: £30-50



Lot No. 421

Meccano mixed lot of components including red spoked wheels with rubber tyres, assorted wheels and hubs, brass pulleys, black gear wheels, green perforated strips and girders, chains and assorted small fittings, overall condition appears Fair to Good with signs of age and use.

Estimate: £50-70



Lot No. 422

Meccano Outfit No.5 comprising red and blue plates, circular plates and wheels, white tyred wheels, cylindrical drum, axles, perforated strips and assorted components, housed in original red lift-off lid box with paper contents sheet, overall condition appears Fair with wear, age-related marking and some corrosion.

Estimate: £30-50



Lot No. 423

Meccano Outfit instructions group with various periods including Pre & Post war, 60's & 70's plus others. Conditions are fair to Good.

Estimate: £20-30



Lot No. 424

Meccano mixed lot comprising a green painted wooden storage cabinet (Non original) containing assorted green perforated plates and lattice girders, together with additional quantities of red, blue and yellow plates, perforated strips and flat plates, some loose and some bagged, overall condition Poor to Fair with some parts showing heavy corrosion.

Estimate: £30-50



Lot No. 425

Meccano Highway Vehicles Set No.3 together with a Meccano Gears set in original box with fitted tray and gears, housed in original boxes, overall condition appears Fair with wear to boxes and contents appears incomplete but unchecked for completeness.

Estimate: £30-50



Lot No. 426

Meccano French Sets B and C, comprising boxed construction sets with illustrated lids showing multiple model builds, contents not checked for completeness, housed in original lift-off lid boxes, overall condition appears Good with some wear to boxes.

Estimate: £40-60



Lot No. 427

Meccano Outfit No. 4 and Meccano Mechanisms Outfit, each in original lift-off lid boxes with yellow plastic compartment trays containing assorted plates, wheels, gears, strips and accessories, together with instruction manual (No. 4), contents appear largely present but unchecked for completeness, boxes showing wear, tears and tape repairs. Overall condition Fair to Good.

Estimate: £50-70



Lot No. 428

Meccano group comprising Space 250 set (styrene tray Sealed Assumed mint), Junior Meccano Construction Set (boxed with plastic tray), and a Bayko Building Set by Plimpton Engineering Co. Ltd., Liverpool, in original blue lift-off lid box with instructions and accessories, Boxes show general wear consistent with age; contents unchecked for completeness. Overall condition Fair to Mint.

Estimate: £40-60



Lot No. 429

Meccano Built solar 'Summer/Winter' motorised display apparatus. Unchecked for operational capability or completeness. Conditions are Good to Good Plus.

Estimate: £30-50



Lot No. 430

Meccano Built items with Fairground Ferris wheel made from an assortment of vintage and modern meccano parts, plus a vintage style excavator using mostly vintage and Army parts. Conditions are generally Good to Good Plus, unchecked for Functionality/Completeness. Please Contact for delivery options.

Estimate: £50-70



Lot No. 431

Mixed Meccano group comprising Meccano Combat Multikit construction set (boxed), Meccano 100-piece set (boxed), Meccano Accessory Outfit (red box/ EMPTY), "Red Arrows Hawk" construction set (boxed), Meccano Junior set, a quantity of small boxed Meccano sets, loose wheels and body parts, together with Meccano Action Packs "Texas Wheelie", Meccano Flexible Track Pack, and a Gears of War "Armored COG" construction set. Boxes show varying degrees of wear; contents unchecked for completeness.

Estimate: £60-80



Lot No. 432

Large quantity of Meccano components and accessories including Meccano No. T20 Transformer (boxed), Electric Motor E20R (boxed), assorted perforated plates, girders and strips in green and yellow, angle brackets, nuts and bolts, wiring, pulleys and gears. Contents unchecked for completeness; transformers untested. Overall condition Good with some signs of use.

Estimate: £50-70



Lot No. 433

Mixed Meccano lot comprising a quantity of red, green and silver perforated plates and angle pieces, assorted strips and brackets, loose components and wiring, a Smoothflow power unit by Minimodels Ltd (input 200–240v A.C., untested), and a Meccano Gears outfit B box. Items show play wear, paint loss and surface rust in places; electrical item untested. Contents unchecked for completeness. Overall condition Fair.

Estimate: £40-60



Lot No. 434

Mixed Meccano components lot comprising a quantity of brass gears and pinions (various sizes), a large black geared rings, loose steel ball bearings, assorted screws and square nuts (boxed and bagged), a quantity of wheels, chain links, pulleys and discs, together with assorted perforated strips, brackets and plates in red, green, blue and natural finish, Items show light to moderate play wear; some oxidation to brass components and minor surface rust to steel parts.

Estimate: £60-80



Lot No. 435

Meccano outfit in hand-made wooden box, the hinged lid with period colour illustration glued to interior, containing a quantity of red, yellow, blue and green perforated plates, strips and angle girders, within a lift-out compartment trays. Conditions are Fair to Good.

Estimate: £40-60



Lot No. 436

Large mixed Meccano components lot comprising a substantial quantity of loose and contained screws, nuts and square nuts (sorted into lidded plastic tubs), brass gears and pinions, axles, spacers and collars, together with assorted green, blue and yellow perforated strips and girders (various lengths), curved sections, pulleys and discs. Also including a large red spoked wheel assembly, yellow Meccano battery/motor housings, a quantity of boxed brass bushes/couplings, Contents unchecked for completeness. Overall condition Good.

Estimate: £60-80



Lot No. 437

Mixed Meccano components lot comprising a quantity of yellow, red and blue perforated plates (various sizes), triangular and curved sections, together with a selection of brass gears and pinions, loose screws, nuts and washers (bagged), and assorted green and silver perforated strips and angle girders (various lengths), brass gears, Conditions are generally Good to Excellent.

Estimate: £60-80



Lot No. 438

Mixed Meccano components lot comprising a substantial quantity of later issue red, blue, yellow and green perforated plates, curved sections and angle pieces, large red and blue spoked wheels, rubber-tired wheels with plastic hubs, pulleys and discs (various diameters), together with bagged small parts including brackets, strips, screws and nuts, and a boxed Meccano clockwork motor, Contents unchecked for completeness. Overall condition Good.

Estimate: £50-70



Lot No. 439

Meccano and Similar mixed modern construction sets comprising Erector Ultimate Control Heavy Hauler wireless remote control set with handset, Meccano 20 Model Set, additional Meccano boxed set, together with a large quantity of loose metal strips, plates, gears, wheels, rods, fixings and accessories, contents unchecked for completeness, overall condition appears Good to Excellent.

Estimate: £50-70



Lot No. 440

Meccano mixed modern and vintage construction components comprising large quantity of perforated plates, strips and girders in red, yellow, green and blue, gears, wheels, tyres, axles, electric motors, Meccano power tool, fixings and accessories, contents unchecked for completeness, overall condition appears Good to Excellent.

Estimate: £50-70



Lot No. 441

Meccano vintage construction group comprising part-built models including lorry chassis and tractor unit, quantity of loose perforated plates, strips, brackets and girders in red, blue, green and yellow, gears, pulleys, wheels and tyres, Meccano spanners, instruction manuals including, contents unchecked for completeness, overall condition appears Fair to Good.

Estimate: £50-70



Lot No. 442

Meccano, Bayko & Primus Engineering mixed vintage construction group comprising quantity of Meccano electric motors including boxed E15R example, loose motors and components, Bayko Building Sets including No.1X Conversion Set and Building Set boxed examples, together with a wooden Meccano cabinet containing assorted perforated plates, wheels, instruction manuals and accessories, plus Primus Engineering wooden box with wooden components and metal plates, contents unchecked for completeness, overall condition appears Fair to Good.

Estimate: £60-80



Lot No. 443

Waterline Ships a Group Of 14 Resin & Metal Aircraft Carriers To Include - "USS Phillipine", "USS Intrepid", "USS Wasp" plus others See-Photo (14)

Estimate: £60-80



Lot No. 444

Waterline Ships a Group Of 14 Resin & Metal Aircraft Carriers To Include - ""USS Ronald Reagan", "Coral Sea", USS Leyte" plus others See-Photo (14)

Estimate: £60-80



Lot No. 445

Waterline Ships a Group Of 14 Resin & Metal Aircraft Carriers To Include - "USS Bennington", "George Washington", ""Formidable" plus others See-Photo (14)

Estimate: £60-80



Lot No. 446

Waterline Ships a Group Of 14 Resin, Plastic & Metal Aircraft Carriers To Include - "USS General Ford", "Hancock", "Illustrious" plus others See-Photo (14)

Estimate: £60-80



Lot No. 447

Waterline Ships a Group Of 18 Metal Battleships & Aircraft Carrier To Include - "Duke Of York", "USS Columbia", "USS Wright" plus others (18)

Estimate: £60-80



Lot No. 448

Waterline Ships a Group Of 16 Resin, Plastic & Metal Aircraft Carriers To Include - "Kunzetov", "USS Saratoga", plus others See-Photo (16)

Estimate: £60-80



Lot No. 449

Waterline Ships A Group Of 20 Metal Battleships To Include - "Vittorio", "London" Plus others See-Photo (20)

Estimate: £70-80



Lot No. 450

Waterline Ships A Group Of 24 Metal Battleships And Submarines To Include - "Helena", "Cadorna", "Cairo" Plus others See-Photo (24)

Estimate: £70-80



Lot No. 451

Waterline Ships A Group Of 23 Metal Made To Include Battleships - "Omaha", "Dauntless" plus others See-Photo (23)

Estimate: £60-70



Lot No. 452

Waterline Ships A Group Of 23 Metal & Resin Made To Include Battleships & Submarines- "Chokai", "Myoko", plus others See-Photo (23)

Estimate: £60-80



Lot No. 453

Waterline Ships A Group Of 26 Metal Made To Include Battleships & Submarines- "Hibernia", "Dragon II", "Pecos", plus others See-Photo (26)

Estimate: £60-70



Lot No. 454

Waterline Ships A Group Of 26 Metal & Resin Made To Include Battleships & Submarines- "Glory", "Ranvijayo" plus others See-Photo (26)

Estimate: £60-70



Lot No. 455

Waterline Ships A Group Of 26 Metal & Resin Made To Include Battleships & Aircraft Carriers - "Exeter", plus others See-Photo (26)

Estimate: £60-70



Lot No. 456

Waterline Ships A Group Of 24 Metal & Resin Made To Include Battleships & Aircraft Carriers - "HMS Canada", "Northampton" plus others See-Photo (24)

Estimate: £60-70



Lot No. 457

Waterline Ships A Group Of 19 Metal & Resin Made To Include Battleships - "Bob Hope", "Arizona", "Utah" plus others See-Photo (19)

Estimate: £60-80



Lot No. 458

Waterline Ships A Group Of 23 Metal/Plastic & Resin Made To Include Battleships - "Canberra", "Truxton", "Worcester" plus others See-Photo (23)

Estimate: £60-80



Lot No. 459

Waterline Ships A Group Of 25 Metal & Resin Made To Include Battleships - "Michigan", "Poolster" plus others See-Photo (25)

Estimate: £70-80



Lot No. 460

Waterline Ships A Group Of 26 Metal & Resin Made To Include Battleships & Submarines - "Intrepid", "Sir Percival" plus others See-Photo (26)

Estimate: £60-80



Lot No. 461

Waterline Ships A Group Of 18 Metal Made To Include Battleships & Aircraft Carriers - "Arromanches", "Furious" plus others See-Photo (18)

Estimate: £60-80



Lot No. 462

Waterline Ships A Group Of 29 Metal Made To Include Battleships & Cargo - "Mogami", ""Sir Lancelot", "Kitakama" plus others See-Photo (29)
Estimate: £70-80



Lot No. 463

Waterline Ships A Group Of 20 Metal/Plastic Made To Include Battleships & Aircraft Carriers - "Triumph", "Warspite", Centuriona" plus others See-Photo (20)
Estimate: £60-80



Lot No. 464

Waterline Ships A Group Of 23 Metal Made To Include Battleships & Aircraft Carriers - "Sangamon", Diligence", Gangut-Class plus others See-Photo (23)
Estimate: £60-80



Lot No. 465

Waterline Ships A Group Of 34 Metal & Resin Made To Include Battleships & Aircraft Carriers - "Iowa", "Nachi" plus others See-Photo (34)
Estimate: £70-80



Lot No. 466

Waterline Ships A Group Of 30 Metal & Resin Made To Include Battleships & Aircraft Carriers - "USS Cowpens", "USS Indiana" plus others See-Photo (30)
Estimate: £70-80



Lot No. 467

Waterline Ships A Group Of 32 Metal Made To Include Battleships & Submarines - "Chester" plus others See-Photo (32)
Estimate: £70-80



Lot No. 468

Waterline Ships A Group Of 29 Metal & Resin Made To Include Battleships & Submarines - ""Bremen", "Hampshire" plus others See-Photo (29)
Estimate: £70-80



Lot No. 469

Waterline Ships A Group Of 28 Metal Made To Include Battleships & Aircraft Carriers - "wright", "Alaska", "Antrim" plus others See-Photo (28)
Estimate: £60-80



Lot No. 470

Waterline Ships A Group Of 30 Metal & Resin Made To Include Battleships & Submarines - ""Clan Furguson", "Konga" " plus others See-Photo (30)

Estimate: £70-80



Lot No. 471

Waterline Ships A Group Of 26 Metal & Resin Made To Include Battleships & Submarines - "Stark", Supply Boat plus others See-Photo (26)

Estimate: £60-70



Lot No. 472

Waterline Ships A Group Of 35 Metal & Resin Made To Include Battleships & Submarines - "Tripirz", "Melbourne Star", "Swiftsure" plus others See-Photo (35)

Estimate: £70-80



Lot No. 473

Waterline Ships A Group Of 29 Metal Made To Include Battleships & Aircraft Carriers - "Iron Duke", "Langley" plus others See-Photo (29)

Estimate: £60-70



Lot No. 474

Waterline Ships A Group Of 24 Metal & Resin Made To Include Battleships & Aircraft Carriers - "USS Lexington", "Olwen" plus others See-Photo (24)

Estimate: £60-80



Lot No. 475

Waterline Ships A Group Of 28 Metal & Resin Made To Include Battleships & Submarines - "Fortland", "Augusta", plus others See-Photo (28)

Estimate: £60-70



Lot No. 476

Waterline Ships A Group Of 25 Metal & Resin Made To Include Battleships & Submarines - "Wave knight", "Dorsetshire", "Cleopatra" plus others See-Photo (25)

Estimate: £60-70



Lot No. 477

Waterline Ships A Group Of 27 Metal Made To Include Battleships & Submarines - "Wave Ryder", "Tennessee", Trento" plus others See-Photo (27)

Estimate: £60-70



Lot No. 478

Waterline Ships A Group Of 25 Metal Made To Include Battleships & Submarines - "Fort Victoria", "West Virginia", "Invincible" plus others See-Photo (25)

Estimate: £60-70



Lot No. 479

Waterline Ships A Group Of 26 Metal Made To Include Battleships & Submarines - "Vindex", "Princess Royal", "Hipper" plus others See-Photo (26)

Estimate: £60-70



Lot No. 480

Waterline Ships A Group Of 24 Metal Made To Include Battleships & Submarines - "North Carolina", "Kronprinz" plus others See-Photo (24)

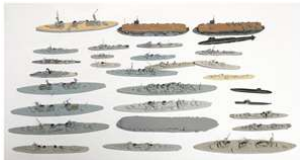
Estimate: £60-70



Lot No. 481

Waterline Ships A Group Of 30 Metal Made To Include Battleships & Aircraft Carriers - "Garibaldi", "Aigle" plus others See-Photo (30)

Estimate: £60-70



Lot No. 482

Waterline Ships A Group Of 30 Metal Made To Include Battleships & Aircraft Carriers - "Pretoria Castle", "Indefatigable" plus others See-Photo (30)

Estimate: £70-80



Lot No. 483

Waterline Ships A Group Of 35 Metal Made To Include Battleships & Submarines - "HMS Swift Sure", "Norfolk" plus others See-Photo (35)

Estimate: £70-80



Lot No. 484

Waterline Ships A Group Of 34 Metal & Resin Made To Include Battleships & Submarines - "Arkansas", "USS Langley" plus others See-Photo (34)

Estimate: £60-80



Lot No. 485

Waterline Ships A Group Of 47 Metal/Plastic & Resin Made To Include Battleships & Submarines - "MKS Santa Teresa", " plus others See-Photo (47)

Estimate: £60-80



Lot No. 486

Waterline Ships A Group Of 50 Metal & Resin Made To Include Battleships & Submarines - "Nigeria", "Urania", " plus others See-Photo (50)

Estimate: £70-80



Lot No. 487

Waterline Ships A Group Of 14 Metal & Resin Made To Include - "Queen Mary", "Queen Mary 2", "Aquitania" plus others See-Photo (14)

Estimate: £70-80



Lot No. 488

Waterline Ships A Group Of 15 Metal & Resin Made To Include - "Queen Elizabeth 2", "Capetown castle" plus others See-Photo (15)

Estimate: £60-70



Lot No. 489

Waterline Ships A Group Of 17 Metal & Resin Made To Include - "Northern Star", "Caronia", "Aurora" plus others See-Photo (17)

Estimate: £60-80



Lot No. 490

Waterline Ships A Group Of 25 Metal/Plastic & Resin Made To Include - "Camberra", "RMS Sylvania", "Pushkin" plus others See-Photo (25)

Estimate: £70-80



Lot No. 491

Waterline Ships A Group Of 16 Metal/Plastic & Resin Made To Include - "Andes", "Alcantara", "Delamr" plus others See-Photo (16)

Estimate: £60-70



Lot No. 492

Waterline Ships A Large Group Metal & Resin Made To Include - "Ivernia", "Free Enterprise" plus others See-Photo (100 Plus)

Estimate: £120-140



Lot No. 493

Waterline Ships A Large Group Of Empty Carded Boxes Includes Plain & With labels (many come with packing) - See-Photo (100,s)

Estimate: £100-200



Lot No. 494

Waterline Ships A Group of 11 To Include - Griffo "Vittorio Veneto", MT Miniatures Lander Class Frigate plus others - conditions are Excellent to Near Mint in Good to Excellent packing (11)
Estimate: £50-60



Lot No. 495

Marx Power-Mite Construction Vehicles, trio of plastic battery operated vehicles (Bulldozer, Cement Truck, Dump Truck), within Fair plus box (tears and tape repairs), surface rust to metal wheel hubs otherwise Good.
Estimate: £40-50



Lot No. 496

New Zealand Triang Minic Shell Tanker 15M, tinplate, clockwork, red cab, yellow tanker, spidering to paint, wear to decals otherwise Good.
Estimate: £100-150



Lot No. 497

Triang Minic Pre War Tractor 11M, tinplate, clockwork, green, within Good box, MISSING tracks and a few small chips otherwise Good to Good Plus.
Estimate: £30-50



Lot No. 498

Triang Minic Pre War Petrol Tanker 15M, tinplate, clockwork, green cab, red trailer, within Good Box (edge wear), flat spots to tyres, age related wear otherwise Good to Good Plus.
Estimate: £40-60



Lot No. 499

Saalheimer & Strauss Mickey Mouse, German (for the English market), early 1930s, non clockwork variant, marked to rear "By exclusive arrangement with Ideal Films Ltd. All rights reserved. Registered No 508041.", marked on back of right leg "Foreign", unusual five finger design. MISSING rubber tail, dent to tip of nose, crack to left cheek, areas of surface rust, fading to colours throughout, general age related wear, otherwise Good. NB: Registered No 508041 was used by Saalheimer & Strauss please see book Aberg's Museum, page 23, ISBN 91-7054-765-3.
Estimate: £10,000-12,000



Lot No. 500

Collection of vintage model engineering and workshop toys, including a boxed Stuart Steam Engine Model No. 1250, complete with burner and original illustrated box (light wear and tarnishing to burner); a group of Maltum Workshop Models comprising three Line Shaft units, a Power Saw, and two 6 Volt Electric Motors, all boxed; together with a boxed set of Metal Puzzles (RPC London). All items show varying degrees of age-related wear, light corrosion, and handling; untested & unchecked for completeness.
Estimate: £50-70



Lot No. 501

Triang Minic Post War Southern Railway Van 82M, tinplate, clockwork, green, MISSING advertising posters, some scuff and scratches otherwise Good to Good Plus.
Estimate: £40-60



Lot No. 502

Vintage wooden garage pair, unknown maker, wooden construction, larger has two floors, small has one floor and includes Crescent diecast ramp, decals to both, age related wear otherwise Good; Larger L x 24"/61cm, H x 11"/28.5cm, D x 21"/53.5cm.
Estimate: £40-50



Lot No. 503

Meier Or Similar Made Penny Toys Horse drawn Cart - Dark grey horse with Red, white and blue open cart - See-Photo - Good Plus overall (approx 13cm)
Estimate: £40-50



Lot No. 504

Meier Or Similar Made Penny Toys Horse drawn Cart - Dark grey horse with Red, white and blue large Churn - See-Photo - Good to Good Plus overall (approx 11cm)
Estimate: £40-50



Lot No. 505

Chad Valley Saloon Car A Pair - (1) Blue body with chrome base - Tinplate with clockwork motor and (2) Same as 91) But red body - conditions are generally Good Plus bright examples (approx 19cm) - (2)
Estimate: £40-50



Lot No. 506

Ubildla (Burnett of London) tinplate Fort - contains quantity of tinprinted parts to build a Fort including walls, 4 x towers, ramp etc, unchecked for completeness but appears Good to Good Plus, a scarce pre-war example.
Estimate: £40-60



Lot No. 507

Ubildla (Burnett of London) tinplate Tower Bridge - contains quantity of tinprinted parts to build Londons Tower Bridge including walls, roads, towers, supports etc, unchecked for completeness but appears Good to Good Plus, a scarce pre-war example.
Estimate: £40-60



Lot No. 508

Modern Toys Space Ship X-5, tinplate and plastic, battery operated (untested but has clean battery compartment), within Good to Good Plus box, small glue repair to plastic dome, some scuffs, otherwise Good.
Estimate: £50-70



Lot No. 509

Yonezawa (Japan) Electrical Emergency Service, tinplate, battery operated (untested but has a clean battery compartment), colourful tinprinting, age related wear (Scuff, areas of surface rust ect.) overall Good, 11"/28.5cm.

Estimate: £60-80



Lot No. 510

Nomura (Japan) Radar Robot a.k.a Topolino, scarce tinplate and plastic robot, grey body, red feet, colourful tin-printing, plastic gears to tummy, grey plastic arms, yellow plastic nose and ear antennas (right antenna is a little loose and satellite disc is detached but present), battery operated (some small areas of surface rust within battery compartment, but connection points are clean), surface scuffs and scratches throughout, some spidering to paint, otherwise Good Plus example of very rare robot, 11"/28.5cm.

Estimate: £3,000-5,000



Lot No. 511

Triang Minic Push & Go Cement Mixer, No. 3163, post war, tinplate/plastic, red cab, with rear plastic chute, touch up on window screen frame otherwise Good.

Estimate: £20-30

Total Number of Lots: 511