



**Lot No. 655**

Mattel Barbie doll group plus others including: Barbie Typewriter, Barbie & Ken Fashion Avenue clothing, Walkie Talkie, Jewel Hair Mermaid Barbie, Butterfly Princess doll, unchecked for completeness or correctness, Fair Plus to Good; (Qty).

**Estimate:** £50-70



**Lot No. 656**

Charlie Bears pair of teddy bears: (1) Sapling, CB228014BO, beige with creme tip plush, with swing label, 12"/30cm; and (2) Shrub, CB228014AO, light brown with brown tip plush, with swing label, 12"/30cm; Excellent Plus; (2).

**Estimate:** £60-80



**Lot No. 657**

Charlie Bears Trio including: (1) Boynton, CB191952B, grey & pink plush, with swing label, 11"/28cm; (2) Woodend, CB191952A, dark brown plush, swing label, 11"/28cm; (3) Lanson, CB 191952C, light brown plush, swing label, 12"/30cm; Excellent; (3).

**Estimate:** £60-80



**Lot No. 658**

Charlie Bears pair including: (1) Ryder, CB202039, plush, swing label, 24"/61cm, Anton, CB215286O, plush, swing label, 10.5"/27cm, both Excellent; (2).

**Estimate:** £60-80



**Lot No. 659**

Charlie Bears Fonda, Isabelle Collection, SJ6213A, LE 148/350, 2022, mohair and alpaca, with swing label certificate, Near Mint, 11.5"/29cm.

**Estimate:** £60-80



**Lot No. 660**

Charlie Bears Trio including: (1) Jupiter, CB232331C, green tipped plush, swing label, 12"/30cm; (2) Neptune, CB232331B, blue tipped plush, swing label, 12"/30cm; (3) Pluto, CB232331A, pink tipped plush, swing label, 12"/30cm; Excellent; (3).

**Estimate:** £60-80



**Lot No. 661**

Charlie Bears teddy bear pair including: (1) Ivan teddy bear, CB 191935A, 2018, designed by Isabelle Lee, dark red curly and brown with cinnamon tip plush, with swing label, 18"/46cm, (2) Dobby, CB171736, LE 3000, plumo (plumo means plush with mohair/alpaca accents), swing label certificate, 17.5"/44cm, both Excellent; (2).

**Estimate:** £60-80



**Lot No. 662**

Charlie Bears Cheese Whizz, CB 202040C, plush, swing label, Excellent, 19"/48cm.

**Estimate:** £50-70



**Lot No. 663**

Charlie Bears Teddy bear trio including: (1) Aloysius, CB131311, plush, with swing labels, 16"/41cm; (2) Theodore, CB131310, plush, swing label, 16"/41cm, (3) Horatio, CB131309, plush, swing labels, 16"/41cm, all Excellent; (3).

**Estimate:** £60-80



**Lot No. 664**

Charlie Bears Soda Pop, CB202040B, plush, swing label, Excellent, 18"/46cm.

**Estimate:** £50-70



**Lot No. 665**

Charlie Bears Cotton Candy, CB202040A, plush, swing label, Excellent, 18"/46cm.

**Estimate:** £50-70



**Lot No. 666**

Charlie Bears pair including: (1) Birthday Bear 2022, CB222272, maroon and white plush, produced for Charlie Bears 17th Birthday, LE 2500, swing label certificate, 13"/33cm, (2) Sirius, CB242451B, blue plush, swing label, 13"/33cm, Excellent; (2).

**Estimate:** £50-70



**Lot No. 667**

Charlie Bears pair including: (1) Errol, CB191923, purple plush, swing label, 16"/41cm; (2) Flynn, CB191939, green plush, with swing label, 18"/46cm; Excellent; (2).

**Estimate:** £60-80



**Lot No. 668**

Charlie Bears pair including: (1) Wizard, CB 228003O, plush, swing labels, 20"/51cm, (2) Roman, CB191807O, plush, with swing label, 19"/48cm, both Excellent; (2).

**Estimate:** £60-80



**Lot No. 669**

Charlie Bear pair including: (1) Derek, CB222230A, plush, swing label, 14"/36cm; (2) Bardot, CB151544, plush, swing label, 17"/43cm; Excellent; (2).

**Estimate:** £60-80



**Lot No. 670**

Charlie Bears teddy bear trio including: (1) Itsy Bitsy, CB228002BO, plush, swing label, 8"/20cm; (2) Teensy Weensy, CBCB228002O, plush, swing label, 11.5"/29cm, (3) Surabhi, CB125151, LE 4000, plush, swing label, 14"/36cm, all Excellent; (3).

**Estimate:** £50-70



**Lot No. 671**

Charlie Bears Group including: (1) Birthday Bear 2023, CB232337A, plush teddy produced for Charlie Bears 18th Birthday, LE 2500, swing label certificate, 12.5"/32cm; (2) Kibibi, CB181870, plush, swing label, 12"/30cm; (3) Angelica, CB206018O, plush, swing label, 11"/28cm; (4) Minnie, CB 228002A, plush, swing label, 8"/20cm; Excellent; (4).

**Estimate:** £60-80



**Lot No. 672**

Charlie Bears teddy bear trio including: (1) Pepper, CB124943, plush, swing labels, 15"/38cm, (2) Parkin, CB114807, plush, swing labels, 17"/43cm, (3) Penelope teddy bear, CB124944, plush, swing labels 13"/33cm, all swing labels are discoloured otherwise Excellent; (3).

**Estimate:** £50-70



**Lot No. 673**

Charlie Bears teddy bear trio including: (1) Padmin panda bear, CB124974, plush, with swing labels, 17"/43cm, (2) Paris, CB124973, plush, swing label (discoloured damaged tag), 19"/49cm, (3) Shenanigans, the first character in the Hatty bears series, CB205243O, LE 3000, 2020, golden plush, with swing label certificate, removeable hat, 12"/30cm, all Good Plus to Excellent; (3).

**Estimate:** £60-80



**Lot No. 674**

Charlie Bears 2017 Mohair Year Bear, CBM 175620, designed by Isabelle Lee, LE 943 of 1000, mohair, with swing label certificate, Excellent Plus to Near Mint, 19"/48cm.

**Estimate:** £50-70



**Lot No. 675**

Charlie Bears Panda teddy bear pair including: (1) Amanda, CB151524A, plush, swing labels, 14"/36cm, (2) Alan panda bear, Secret Collection 2015, CB151524B, LE 2300, designed by Isabelle Lee and Charlie, plush, (MISSING swing label), 14.5"/37cm, both Excellent; (2).

**Estimate:** £50-70



**Lot No. 676**

Charlie Bears Teddy bear trio including: (1) Piran panda, CB202002A, plush, swing label, 15"/38cm, (2) Rodley Panda Bear, CB104717B, green and cream plush, with swing label, 11"/28cm, (3) Niall, CB151521B, plush, swing label (signed), 11"/28cm, all Good Plus to Excellent; (3).

**Estimate:** £60-80



**Lot No. 677**

Charlie Bears Group including: (1) Demi, CB 131368, plush, swing labels, 13"/33cm; (2) Professor Plum, CB235048O, plush, swing label, 12"/31cm; (3) Tatty, CB 647007O, plush, swing label, 12"/30cm; (4) Tiny Tim, CB121323, plush, swing label, 12"/31cm; Excellent; (4).

**Estimate:** £60-80



**Lot No. 678**

Charlie Bears pair including: (1) Pamper, CB 181817B, brown plush, swing label, 15"/38cm; (2) Hakatan, CB 181809A, blue plush, swing label, 15"/38cm; Excellent; (2).

**Estimate:** £50-70





**Lot No. 679**

Charlie Bears Grandfather of the Mountains, CB202071, LE 2000, plush, swing labels, Excellent, 21.5"/55cm.

**Estimate:** £50-70



**Lot No. 680**

Charlie Bears Father of the Forest, CB 202070, LE 2000, plush, swing label, Excellent, 22"/56cm.

**Estimate:** £50-70



**Lot No. 681**

Charlie Bears Lord of the Arctic, CB202069, LE 2000, white plush, swing label, Excellent, 22"/56cm.

**Estimate:** £50-70



**Lot No. 682**

Charlie Bears Lachlan, CB202003B, plush, swing labels, Excellent to Near Mint; 23"/58cm.

**Estimate:** £50-70



**Lot No. 683**

Charlie Bears Teddy bear pair including: (1) Christian, CB202003A, plush, swing label, 23"/58cm, (2) Autumn, CB141421, plush, swing label, 15"/38cm, both Excellent; (2).

**Estimate:** £60-80



**Lot No. 684**

Charlie Bears Animal teddy bear pair of Bearhouse Bears including: (1) Bears Fang saber-tooth tiger, BB234307, plush, swing label, 15"/38cm (seated), (2) London Raccoon, BB224200, 2022, plush, swing label, 16"/41cm, both Excellent; (2).

**Estimate:** £50-70



**Lot No. 685**

Charlie Bears Group including: (1) Butterpaws, CB235053O, blue & green plush, swing label, 11"/28cm; (2) Oskar, CB215287O, green plush, swing label, 9"/23cm; (3) Callie, CB 171758A, pale pink and light brown plush, swing label, 13"/33cm; (4) Butterscotch, CB195211O, rust plush, swing label, 8"/21cm; (5) Smartie, CB 195213O, blue plush, swing label, 9"/23cm; Excellent; (5).

**Estimate:** £60-80



**Lot No. 686**

Charlie Bears group x 5 including: (1) Teddy, CB181821A, plush, swing label, 10"/26cm; (2) Bear, CB181721, plush, swing label, 10"/26cm, (3) Jelly Tot, CB195212O, red plush, swing label, 10"/26cm, (4) Fairycake, CB191808O, lilac plush, swing label, 11"/28cm, (5) Brat the rat (Halloween Collection), CB175189, 2017, purple with black fleck plush, MISSING swing labels, 12"/30cm, all Good Plus to Excellent; (5).

**Estimate:** £60-80



**Lot No. 687**

Charlie Bears Group including: (1) Hilltop, CB246040O, brown plush, swing label, 15"/38cm; (2) Alpine, CB246038O, brown and white plush, swing label, 12"/30cm; (3) Prairie, CB246036O, brown and blonde plush, swing label, 11"/28cm; (4) Penchant, CB185174, pink plush, swing label, 9"/23cm; Excellent; (4).  
**Estimate:** £60-80



**Lot No. 688**

Charlie Bears teddy bear pair including: (1) Finn teddy bear, CB205247O, plush, swing label, 12.5"/32cm, (2) Duffy, CB124932, plush, MISSING swing label, 19"/48cm, both Good to Good Plus; (2).  
**Estimate:** £40-60



**Lot No. 689**

Charlie Bears Costume teddy bear group x 4 including: (1) Snooze Lion, CB225296O, golden plush, with swing label, 14"/35cm, (2) Cat Nap cat, CB225294O, plush, swing label, 10"/25cm, (3) Pantaloon, CB215281O, Plush, swing label, 10"/25cm, (4) Sweet Dreams teddy bear, CB225295O, plush, swing label, 10"/26cm, all Excellent; (4).  
**Estimate:** £60-80



**Lot No. 690**

Charlie Bears Bearhouse Bears & other including: (1) Drogo dog, BB143018, brown and beige plush, swing label, 17"/44cm; (2) Gibraltar stork, BB173079, white and black plush, swing label, 18"/46cm; (3) Trio of Russ and Cottage Collectibles teddy bears; Good Plus; (5).  
**Estimate:** £40-60



**Lot No. 691**

Charlie Bears Costume teddy bear group x 4 including: (1) Nod, Sleepover series, CB225297O, plush wearing a tiger onesie, swing label, 16"/41cm, (2) Onesie, CB215282O, plush wearing a mouse costume, with swing label, 9"/23cm, (3) Romper teddy bear, CB215273O, plush, with swing labels, 13"/33cm, (4) Jumpsuit teddy bear, CB215280O, dressed in reindeer costume, plush, with swing label, 11"/28cm, all Excellent; (4).  
**Estimate:** £60-80



**Lot No. 692**

Charlie Bears Wilfy, CB 202037B, cinnamon plush, swing label, Excellent, 19"/48cm.

**Estimate:** £50-70



**Lot No. 693**

Charlie Bears Willamena, CB 202037A, off white plush, swing label, Excellent, 19"/48cm.

**Estimate:** £50-60



**Lot No. 694**

Charlie Bears pair including: (1) Molly Cuddle, CB 181817A, dusty pink plush, MISSING swing labels, 16"/41cm; (2) Jan, CB 181809B, brown plush, swing label, 15"/38cm; Excellent; (2).

**Estimate:** £60-80



**Lot No. 695**

Charlie Bears Costume teddy bear trio including: (1) Pilot Pete, CB195233, plush, LE 669 of 700, swing label, 12"/31cm, (2) Bandage, CB215274O, plush, swing label, 11"/28cm, (3) Bearwolf, CB215275O, plush, swing label, 12"/31cm, all Excellent; (3).  
**Estimate:** £50-70



**Lot No. 696**

Steiff Disney pair including: (1) Disney Showcase Thumper, white tag 680038, LE 5000, swing certificate (ceased), 5"/13cm, (2) Pluto, white tag 651809, LE 5000, orange mohair 2001, swing label certificate, 10"/26cm, both within Good Plus packaging (some marks to box) & outer trade carton, otherwise Excellent to Excellent Plus; (2).  
**Estimate:** £60-80



**Lot No. 697**

Steiff teddy bear pair including: (1) Centenary teddy bear, white tag 670985, LE to year 2002, mohair, certificate, 17"/44cm, (2) Irish Teddy Bear, UK and Ireland Exclusive, white tag 660702, LE 2000, 2002, swing label certificate, 14"/35cm, within Good box & outer trade packaging, both Good to Good Plus; (2).  
**Estimate:** £50-70



**Lot No. 698**

Steiff teddy bear pair including: (1) Benji Cherished Teddies, North American exclusive, white tag 665929, LE 5000, golden mohair teddy bear carrying a ceramic honey pot, with gold honey bee to left paw, created in collaboration with Cherished Teddies by Enesco, 3rd in a series of three, certificate, 12"/31cm, (2) Four Seasons Teddy Bears Spring, yellow tag 028175, green tipped mohair bear complete with butterfly, swing label, 6"/15cm, both within Good packaging, Good to Good Plus; (2).  
**Estimate:** £60-80



**Lot No. 699**

Steiff teddy bear trio including: (1) Amy Gorilla, yellow tag 660634, black mohair with swing label, chest tag, 11"/28cm, (2) Brummbär 1934, white tag 420252, Club Edition 2001, brown mohair, with certificate, 9.5"/24cm, (3) Teddy Bear 1950 dark brown club edition 2001/2002, white tag 420245, LE 5287, mohair, certificate, 14"/35cm, all within Good packaging, Good to Good Plus; (3).  
**Estimate:** £60-80



**Lot No. 700**

Steiff teddy bear group plus others including: Brown Classic Bear, yellow tag 004490, chest tag and swing label, mohair, 13.75"/35cm, (2) Steiff brown teddy bear, yellow tag 000836, swing label, mohair, 13"/33cm, (3) Golly, plush, 10"/26cm, also includes EMPTY steiff Golly Girl box & certificate, Good to Good Plus; (3).

Please Note: These items are listed on the basis they are illustrative of a bygone culture in which there were different social norms. We understand the potential controversy surrounding this type of item but believe that providing transparent information about historical context fosters greater understanding of our complex cultural history.

**Estimate:** £40-60



**Lot No. 701**

Steiff Dollyland Jolly Golly and Bear Set, 1996, LE 1500, white tag 654428, felt and mohair, certificate, still retained within Good Plus box (some foxing), outer trade carton, Good Plus to Excellent, 9.5"/24cm and 13.25"/35cm. Please Note: These items are listed on the basis they are illustrative of a bygone culture in which there were different social norms. We understand the potential controversy surrounding this type of item but believe that providing transparent information about historical context fosters greater understanding of our complex cultural history.

**Estimate:** £50-70





**Lot No. 702**

Steiff Dollyland Jolly Golly and Bear Set, 1996, LE 1500, white tag 654428, felt and mohair, certificate, still retained within Good Plus box (some foxing), outer trade carton, Good Plus to Excellent, 9.5"/24cm and 13.25"/35cm. Please Note: These items are listed on the basis they are illustrative of a bygone culture in which there were different social norms. We understand the potential controversy surrounding this type of item but believe that providing transparent information about historical context fosters greater understanding of our complex cultural history.

**Estimate:** £50-70



**Lot No. 703**

Steiff Dollyland Jolly Golly and Bear Set, 1996, LE 1500, white tag 654428, felt and mohair, certificate, still retained within Good Plus box (some foxing), outer trade carton, Good Plus to Excellent, 9.5"/24cm and 13.25"/35cm. Please Note: These items are listed on the basis they are illustrative of a bygone culture in which there were different social norms. We understand the potential controversy surrounding this type of item but believe that providing transparent information about historical context fosters greater understanding of our complex cultural history.

**Estimate:** £50-70



**Lot No. 704**

Mixed Bear & Doll group including: Zapf Creation Baby Born sets; Deans Rag Book LE Jack Teddy Bear; vintage plush Snoopy; range of modern Corgi; plus others; Good; (Qty).

**Estimate:** £30-50



**Lot No. 705**

Robertson's Golly badges Golden Shred x10 plus Noddy Club badge, to include: (1) bagpiper, F & S; (2) tennis player, HW Miller; (3) golfer, HW Miller; (4) cricketer, Fattorini; (5) footballer, Marples & Beasley; (6) guitarist, Gomm, plus others, Good to Good Plus; (12).

NB: These items are listed on the basis they are illustrative of a bygone culture in which there were different social norms. We understand the potential controversy surrounding this type of item but believe that providing transparent information about historical context fosters greater understanding of our complex cultural history.

**Estimate:** £50-70



**Lot No. 706**

Enesco Disney Showcase Collection Live Action Cinderella Figurine #4050709, within Excellent box, Excellent to Excellent Plus; 9"/23cm.

**Estimate:** £20-30



**Lot No. 707**

TY Beanie Babies Group, various characters, most have have tags, Good Plus to Excellent; (Qty).

**Estimate:** £40-60



**Lot No. 708**

Steiff Beatrix Potter Tom Kitten, 100th Year Anniversary Edition 2005, white tag 662126, LE 1500, with swing label certificate, Excellent Plus, within Excellent Plus to Near Mint box, outer trade carton, 10"/25cm.

**Estimate:** £60-80



**Lot No. 709**

Steff Raymond Briggs "The Snowman Skiing", white tag 661877, LE 1500, 2004, exclusive to the Guild of Specialist Gift Retailers, 2nd in the series, mohair, certificate, within Excellent packaging, outer trader carton, Excellent to Excellent Plus; 10"/26cm.

**Estimate:** £60-80



**Lot No. 710**

Steff mohair Zoo Animals, edition set 2007, white tag 038693, comprising mohair Monkey, Tiger, Crocodile, Rhino and Zebra, Mint, including certificate, box and outer trade carton, average length 7"/18cm.

**Estimate:** £80-120



**Lot No. 711**

Steff Animal trio including: (1) Mungo Meerkat, yellow tag 071249, mohair, chest tags, swing labels, (sealed within original packaging) 12"/30cm, (2) Mungo Chameleon Lizard, yellow tag 067310, green mohair, chest tag, swing labels, 12"/31cm, (3) Andrea Armadillo, yellow tag 068805, caramel mohair, chest tag, swing labels, 17"/43cm, all Excellent; (3).

**Estimate:** £60-80



**Lot No. 712**

Steff Animal trio including: (1) Kiwu Okapi, yellow tag 067709, mohair, chest tags, MISSING swing labels, 12"/30cm, (2) Manni Tasmanian Devil, yellow tag 120190, black mohair, chest tag, swing labels, 12"/31cm, (3) Cheetah, white tag 666216, LE 1500, mohair, from San Diego Zoo, with swing label certificate, 12"/30cm, all Excellent; (3).

**Estimate:** £60-80



**Lot No. 713**

Steff Goldilocks and the Three Bears Suzanne Gibson/Reeves International Set, 1985, USA exclusive, white tag 0173/14, 18 & 22, LE 2339 of 5000, comprising Suzanne Gibson Doll and Mama, Papa and Baby Bears, mohair, chest tags, swing labels, Near Mint within Good Plus box, bears 5.5"/14cm, 7.5"/18cm and 8.75"/22cm.

**Estimate:** £80-100



**Lot No. 714**

Steff Alice and Her Friends Suzanne Gibson/Reeves International Set, 1986, USA Exclusive, white tags 0146/13, 0147/20 & 0148/13, LE 3000, comprising Suzanne Gibson doll, mohair cat, rabbit and mouse, Near Mint within Good box, doll 12"/31cm, cat 5"/13cm, rabbit 8"/20cm and mouse 5"/13cm.

**Estimate:** £80-100



**Lot No. 715**

Steff Wind in the Willows Mole, white tag 37023, limited edition 4000, black and beige mohair, complete with tags, Within Excellent box and outer trade carton, Excellent to Excellent Plus; 10"/25cm.

**Estimate:** £60-80



**Lot No. 716**

Steff Unicorn group including: (1) Golden Unicorn, LE 3000, white tag 999086, 1995, mohair, heraldic figure of the City of Giengen's coat of arms, chest tag, swing label certificate, 10.5"/27cm; (2) Original Unicorn, yellow tag 0130/27, off white mohair, chest tag, swing label, 6"/15.5cm high; (3) Original Unicorn, yellow tag 0130/17, off white mohair, chest tag, 4"/10.5cm high; (4) White unicorn, yellow tag 990823, plush, chest tag, swing label, still sealed within factory bag, 6"/15.5cm; Excellent Plus; (4).

**Estimate:** £80-100





**Lot No. 717**

Steiff Animal plush group x 8 including: (1) Andy Anteater, yellow tag 040955, chest tag, swing labels, 4"/10cm High, (2) Rat Original, yellow tag 070891, chest tag 070891, chest tag, swing labels, 3"/7.5" High, (3) Door mouse, yellow tag 070822, chest tag, swing labels, 2.5"/7" High, (4) Shrew, yellow tag 070884, chest tag, swing labels, 2"/5cm High, (5) Tapi Tapir, yellow tag 040986, chest tag, swing labels, 4"/10cm High, (6) Lemming, yellow tag 070846, chest tag, swing labels, 3"/7.5" High, (7) Manati, yellow tag 047602, chest tag, swing labels, 2"/5cm High, (8) Turkey Goose Rattle Putte, yellow tag 234217, plush, swing label, 7"/18cm, all Excellent; (8).

**Estimate:** £50-70



**Lot No. 718**

Steiff Bird Group including: (1) Bluetit, yellow tag 033179; (2) Run Gimpel, yellow tag 033155; (3) Pips Red Chick, yellow tag 033193; (4) Lore Greenling, yellow tag 033162; (5) Pipit Siskin, yellow 033186; (6) Snuckl Finch, yellow tag 033216; (7) Lorli Coal Tit, yellow tag 033223, sealed within factory bag; mohair with felt details, all with swing labels, 2.5"/7cm; (7).

**Estimate:** £60-80



**Lot No. 719**

Steiff Miniature mohair animal / insect group x 7 including: (1) Lizzy the cat, yellow tag 074332, chest tag, swing label, 5"/12cm, (2) Claire the Tarantula, yellow tag 035524, chest tag, swing label, 5"/12cm, (3) Crabby the Lady Bird, yellow tag 032844, chest tag, swing label, 5"/12cm, (4/5) Hanno Hummel, yellow tag 035647, chest tag, swing label, 3"/8cm x 2 (one is sealed), (6) Brownny Maybug, yellow tag 035609, chest tag, swing label, 2"/6cm, (7) Sniffy Hedgehog, yellow tag 032271, chest tag, swing label, 2"/6cm, all Excellent; (7).

**Estimate:** £50-70



**Lot No. 720**

Steiff Nativity Set pair including: (1) Nativity set 2005, white tag 037597, LE 75/1000, comprising wooden stable with three mohair Teddy Bears, wearing outfits made of cotton, linen and jute, plus an Ox and a Donkey, certificate, within Good Plus box, Excellent Plus; Mary 6.75"/17cm; Joseph 7"/18cm; Baby Jesus 3.5"/9cm; Ox 8"/20cm and Donkey 5.5"/14cm; Stable set 20.5"/52cm wide by 10.5"/27cm deep by 15"/38cm high; (2) Nativity set 2007, white tag 037344, LE 138/1000, comprising of three mohair bear and one mohair camel, certificate, MISSING box, teddy bears 7"/18cm, camel 9.75"/25cm; Excellent; (Qty).

**Estimate:** £150-200



**Lot No. 721**

Steiff Cat group including: (1) Sulla Siamese Cat, yellow tag 074264, mohair, chest tag, swing labels, 14"/36cm, (2) Cat & Kitten, yellow 075360, plush, chest tag, swing labels, 10"/25cm, 6"/15cm, (3) Radjah Tiger, yellow tag 066252, chest tag, swing label, plush, 19"/49cm, all Excellent; (3).

**Estimate:** £60-80



**Lot No. 722**

Steiff Halloween trio including: (1) Halloween teddy dressed as Cat, yellow tag 028489, mohair, swing label, 9"/23.5cm; (2) Fredrick Bat, yellow tag 055805, mohair, swing label, 7"/18.5cm; (3) Teddy Bear Witch, yellow tag 028670, mohair, swing label, 7"/18.5cm; Excellent; (3).

**Estimate:** £60-80



**Lot No. 723**

Steiff Wolfgang A. Mozart miniature teddy bear, with wooden music box piano and stool, white tag 657108, LE 1500, 2006, music box plays Einer klein Nachtmusik, Excellent to Excellent Plus, within Excellent presentation box; 6"/15cm.

**Estimate:** £60-80



**Lot No. 724**

Steiff Clip Apart Bear group, yellow tag 002519, black mohair bear, magnetic joints in limbs and head allow bear to taken apart and become interchangeable with other bears in the series, swing tag, 10"/25cm; also includes red mohair head and torso, yellow tag 002472 and yellow tag 002533 (both still sealed within factory bags); Excellent to Near Mint; (2).

**Estimate:** £80-100



**Lot No. 725**

Steiff Animal trio including: (1) Steiff Elephant 23, Blau Buchstutze, yellow tag 606250, with swing labels, navy blue mohair, 9"/23cm, (2) Lacoste Crocodile, yellow tag 999376, chest tag, swing label, green plush, 16"/41cm, (3) Maggy Penguin, yellow tag 063657, swing label (creased), plush, 17"/44cm, all Excellent; (3).

**Estimate:** £50-70



**Lot No. 726**

Steiff Owl pair including: (1) Danbury Mint Ollie The Tawny Owl, yellow tag 661532, mohair, certificate, swing label, drawstring bag, 9"/23.5cm; (2) Wiggi Owl, yellow tag 072048, plush, swing label, 11"/208.5cm; Excellent Plus, (2).

**Estimate:** £50-70



**Lot No. 727**

Steiff Animal group including: (1) Cow, yellow tag 950452, white plush, chest tag, swing label, 13"/33cm, (2) Steiff Elephant 23, Blau Buchstutze, yellow tag 606250, with swing labels, navy blue mohair, 9"/23cm, (3) Panda Bear & Baby, yellow tag 660818 & 660818, mohair, swing label, 8"/20cm, all Good Plus to Excellent; (3).

**Estimate:** £60-80



**Lot No. 728**

Steiff Giant Panda, white tag 665332, LE 1500, mohair, MISSING swing label certificate, Excellent, 10"/23.5cm.

**Estimate:** £50-70



**Lot No. 729**

Steiff Koala Bear, North American Exclusive, white tag 665967, LE 1500, mohair, swing label certificate signed by Paul H Johnson President Steiff, Excellent, 13"/33cm.

**Estimate:** £80-100



**Lot No. 730**

Steiff Miniature teddy bear pair including: (1) Meyers Diamond Jubilee, black mohair bear, 1989, white tag 0208/15, LE 1000, chest tag, 6"/15cm, (2) Happy mohair green frog with gold crown, yellow tag 033247, swing label, green mohair, 3.5"/9cm, both Excellent; (2).

**Estimate:** £40-60



**Lot No. 731**

Steiff Miniature teddy bear group including: (1) Teddy Bear pair "Fruities" Cherries, dark red, chest tags and swing label, 3.5"/9cm, (2) Buddha bear key chain, yellow tag 039157, swing label, chest tag, blond mohair, 4"/10cm, (3) Flower Teddy, yellow tag 028236, wearing green knitted jumper with embroidered daisy, 3"/8cm, (4) Blond bear holding felt butterflies, yellow tag 656811, swing label, mohair, 3.5"/9cm, (5) Green bear holding yellow duck, yellow tag 656804, swing label, mohair, 3.5"/9cm, all Excellent; (5).

**Estimate:** £60-80



**Lot No. 732**

Steiff Dinosaur group including: (1) Tyrannosaurus Rex, yellow 066818, plush, chest tag, swing label, 9"/23.5cm; (2) Triceratops, yellow tag 066849, plush, chest tag, swing label, 6.5"/17cm; (3) Stegosaurus, yellow tag 066832, plush, chest tag, swing label, 5"/13.5cm; (4) Pteranodon, yellow 066856, plush, chest tag, swing label, 10"/26cm long; Excellent Plush; (4).

**Estimate:** £30-50



**Lot No. 733**

Steiff Zoo Set, white tag 038686, LE 917 of 1000, 2006, including: mohair Lion, Bear, Giraffe, Elephant and Camel, with certificate and box & outer trade carton, Excellent to Excellent Plus; 6"/15cm.

**Estimate:** £60-80



**Lot No. 734**

Steiff Collection of Keyrings x 12 including: Dragon, Panda, Lion, Elephant, Owl, Bear, plus others, majority are still sealed within original packaging, all plush & come with swing labels & chest tags, Excellent to Excellent Plus; (12).

**Estimate:** £40-60



**Lot No. 735**

Steiff Animal pair including: (1) Borse Bull and Bear, white tag 995712, mohair, within Good Box with outer trade carton, bull 6.5"/17cm high, Bear 4"/10cm high, (2) Bose Rabbit pair & wooden hutch, yellow tag 992070, 992087, mohair, with swing labels and chest tag, 5"/13cm, both Good Plus to Excellent; (2).

**Estimate:** £60-80



**Lot No. 736**

Steiff Fish group including: (1) Taffy Falterfish, yellow tag 121852, mohair, swing label, 5.5"/14.5cm; (2) Orsl Druckerfisch, yellow tag 121876, mohair, swing label, 7"/18.5cm; (3) Koi Karpfen, yellow tag 121838, mohair, swing label, 10"/26cm; (4) Zappy Papageifisch, yellow tag 035579, mohair, swing label, 9"/23.5cm; (5) Kaiserfisch, yellow tag 121807, plush, swing label, 9"/23.5cm; (6) Pinzett-Fisch, yellow tag 121821, plush, swing label, 6.5"/17cm; Excellent to Excellent Plus; (6).

**Estimate:** £60-80



**Lot No. 737**

Steiff Club Christmas Pyramid with Teddy Bears, 037719, 2004, LE 40 of 1000, with 7 bears, two levels of the carousel, turns when you light the candles, with certificate, candles, appears complete, but unchecked for completeness or correctness - see photo, within Excellent box & trade carton, Excellent Plus.

**Estimate:** £100-200



**Lot No. 738**

Steiff Teddy bear group including: (1) Steiff Teddy Bear with Little Donkey, white tag 670886, LE 3000, comprising mohair teddy bear wearing blue velvet cloak and white hat and grey mohair donkey, bear 8.75"/21cm and donkey 8"/20cm, (2) King Balthazar with an Elephant, white tag 037832, comprising mohair teddy bear and grey mohair elephant, LE 1500, 7"/18cm and elephant 12"/30cm, (3) Teddy with Dromedary, white tag 037924, comprising mohair teddy bear and camel, LE 3000, bear 7"/18cm, camel 10"/26cm, all MISSING swing label certificate & boxes, otherwise Excellent; (3).

**Estimate:** £60-80





**Lot No. 739**

Steiff sea creature group including: (1) Toldi Weisskehl-doktorfisch, yellow tag 121869, plush, swing label, 6"/15.5cm; (2) Swinny Seepferd, yellow tag 035548, mohair, swing label, 5.5"/14.5cm; (3) Cosy Clippy Krabbe, yellow tag 095870, plush, swing label, 4"/10cm; (4) Oko Clownfisch, yellow tag 035586, mohair, swing label, 4"/10.5cm; (5) Coloro Saestern, yellow tag 035531, mohair, 5"/13cm; (6) Yellow Feuersalamander, yellow tag 035616, mohair, swing label, 5"/13cm; (7) Moosy Muschel, yellow tag 035562, mohair, swing label, 3"/8cm; Excellent to Excellent Plus; (7).

**Estimate:** £60-80



**Lot No. 740**

Steiff Dog teddy bear pair including: (1) Afghan Hassan dog, yellow tag 4182/40, chest tag, plush, 15"/38cm, (2) Taffy the Yorkshire Terrier, yellow tag 4192/25, chest tag, 11"/28cm, both Good Plus to Excellent; (2).

**Estimate:** £50-70



**Lot No. 741**

Steiff Perpetual Calendar, white tag 027307, LE 6/2001, certificate, comprising 12 individual Teddy Bears - one for each month of the year, calendar is in the shape of a beehive, special plaque for each month and can be adapted accordingly for each day, bears are 2.5"/6cm, display 22"/56cm tall and 18.5"/47cm wide, within Good box; Excellent.

**Estimate:** £180-200



**Lot No. 742**

Steiff Raymond Briggs The Snowman "Dancing with Teddy", white tag 661150, LE 1500, mohair, with certificate, within Good box, Excellent; 10.25"/26cm.

**Estimate:** £60-80



**Lot No. 743**

Steiff Dog teddy bear pair including: (1) Treff Skye terrier dog, yellow tag, 031663, mohair, chest tags, swing labels, 11"/28cm, (2) Steiff 1935 Classic Fellow black and tan Terrier, yellow label 035012, with chest tag, swing labels, 11"/28cm, both Good Plus to Excellent; (2).

**Estimate:** £50-70



**Lot No. 744**

Steiff Pewter Miniature Collection, 430503, wooden display case, x 10 Pewter Bears within blue velvet drawstring bag, within Good Plus packaging, Excellent to Near Mint.

**Estimate:** £50-70



**Lot No. 745**

Steiff Perpetual Calendar, white tag 027307, LE 2001, BEARS ONLY X 12 - one for each month of the year, bears are 2.5"/6cm, Good Plus to Excellent; (12).

**Estimate:** £50-70



**Lot No. 746**

Steiff mixed group including: (1-2) Christmas tree, yellow tag 115035, plush, swing labels, 102/26cm; (3) Original teddy bear, yellow tag 996351, mohair, swing label, within Good Plus box, 4"/10cm; (4) Baccharus, yellow tag 650673, mohair, swing label, 9"/23.5cm; (5) Cockatoo clip, yellow tag 057793, mohair, swing label, 3"/8cm; (6) Fynn bear doctor set, yellow tag 111800, plush, some foxing, swing label detached but present, within Good suitcase (ink notation), 10"/26cm; Good to Excellent Plus; (6).

**Estimate:** £60-80



**Lot No. 747**

Steiff mixed collectables group including: The Club House ornament Inaugural Edition 420215, LE Year 2000, Steiff Club Pins, Pewter miniature, Steiff sign, Steiff bag, plus others, Good Plus to Excellent; (Qty).

**Estimate:** £60-80



**Lot No. 748**

Steiff Noah's Ark pair of sets including: (1) Gorilla set, 1994-1995, white tag 038464, LE 18/8000, mohair, MISSING certificate, ceramic chest medallions, swing labels, 7"/18cm; (2) Camel set, 1996-1997, white tag 038549, LE 404/8000, mohair, MISSING certificate, ceramic chest medallions, swing labels, 6.25"/16cm; Excellent Plus; (4).

**Estimate:** £50-70



**Lot No. 749**

Steiff Noah's Ark pair of sets including: (1) Tiger Set, 1995 to 1997, white tag 038488, LE 313 of 8000, mohair, complete with certificate, chest medallions, swing tags, 4.75"/12cm and 4"/10cm, (2) Giraffe Set, 1993-1995, white tag 038341, LE 2094 of 8000, mohair, certificate, chest medallions, 8"/20cm, both Excellent; (2).

**Estimate:** £50-70



**Lot No. 750**

Steiff Noah's Ark pair of sets including: (1) Donkey set, 1996-1997, white tag 038525, LE 116/8000, mohair, MISSING certificate, ceramic chest medallions, swing labels, 6.25"/16cm; (2) Brown bear set, 1993-1996, white tag 038327, LE 3064/8000, mohair, MISSING certificate, ceramic chest medallions, swing labels, 4.75"/12cm; Excellent to Excellent Plus; (4).

**Estimate:** £50-70



**Lot No. 751**

Steiff Noah's Ark pair of sets including: (1) Llama set 1995-96, white tag 038501, LE 868 of 8000, complete with certificate and chest medallions, swing tag, 6.25"/16cm, (2) Noah's Ark Lion Set, 1994 to 1996, white tag 038440, LE 240 of 8000, mohair, complete with certificate, chest tags, swing labels, 4.75"/12cm and 4"/10cm, both Excellent; (2).

**Estimate:** £50-70



**Lot No. 752**

Steiff Wind in the Willows Ratty, white tag 37047, limited edition 4000, brown mohair, complete with tags, within Good Plus box, Excellent to Excellent Plus; 10"/25cm.

**Estimate:** £60-80



**Lot No. 753**

Steiff Noah's Ark pair of sets including: (1) dove set, 1997, white tag 038563, LE 1531/8000, mohair, MISSING certificate, ceramic chest medallions, swing labels, 4"/10cm; (2) Elephant set in boat, white tag 038303, LE 4507/8000, mohair, MISSING certificate, ceramic chest medallions, swing labels, 5.5"/14cm; Excellent to Excellent Plus; (5).

**Estimate:** £50-70



**Lot No. 754**

CONTACT US FOR A POSTAGE QUOTE: Steiff Noah's Ark, with Mr & Mrs Noah, 1992-1997, white tag 038006, LE 3360/8000, mohair bears, ceramic chest medallions, certificate, swing labels, Good to Excellent, bears 8"/20cm, ark 39.5"/100cm; together with a pair of Noah's Children, 1997, white tag 038587, LE 1250/8000, mohair bears, ceramic chest medallions, MISSING certificate, swing labels, 6"/15cm; (qty).

**Estimate:** £50-70



**Lot No. 755**

Lundby The Swedish Doll's House Furniture & Accessories group including: Family, Garden set, Lights, Baby Crib, plus others, within Good Plus boxes, Excellent to Excellent Plus; (7).

**Estimate:** £60-80



**Lot No. 756**

Lundby The Swedish Doll's House Furniture & Accessories group including: Horse and rider, pets, garden items, plus others within Good Plus boxes, Excellent to Excellent Plus; (7).

**Estimate:** £60-80



**Lot No. 757**

Lundby The Swedish Doll's House Furniture & Accessories group including: figures, rugs, lighting, plus others within Good Plus boxes, Excellent to Excellent Plus; (9).

**Estimate:** £60-80



**Lot No. 758**

Lundby The Swedish Doll's House Furniture & Accessories group including: figures, garden items, lighting, plus others within Good Plus boxes, Excellent to Excellent Plus; (8).

**Estimate:** £60-80



**Lot No. 759**

Steiff Hippiie Teddy Bear, white tag 672149, LE 1500, blond mohar, with certificate, within Excellent box & outer packaging, Excellent to Excellent Plus; 12"/31cm.

**Estimate:** £70-90



**Lot No. 760**

Lundby The Swedish Doll's House Furniture & Accessories group including: Family, Garden set, Lights, Baby Crib, plus others, within Good Plus boxes, Excellent to Excellent Plus; (6).

**Estimate:** £50-70





**Lot No. 761**

Lundby The Swedish Doll's House Furniture & Accessories Christmas group including: Family, Christmas Tree, Gingerbread Baking kit, Fireplace, plus others, within Good Plus boxes, Excellent to Excellent Plus; (6).

**Estimate:** £60-80



**Lot No. 762**

Lundby The Swedish Doll's House Furniture & Accessories group including: TV, Doll & dressing table, Bedroom set, Garden set, Bathroom set, Cats, plus others, within Good Plus boxes, Excellent to Excellent Plus; (9).

**Estimate:** £60-80



**Lot No. 763**

Lundby The Swedish Doll's House Furniture & Accessories group including: kitchen, garden items, pets, plus others within Good Plus boxes, Excellent to Excellent Plus; (9).

**Estimate:** £60-80



**Lot No. 764**

Lundby The Swedish Doll's House Furniture & Accessories group including: living room, figures, rugs, plus others within Good Plus boxes, Excellent to Excellent Plus; (9).

**Estimate:** £60-80



**Lot No. 765**

Lundby The Swedish Doll's House Furniture & Accessories group including: kitchen, figures, bed, plus others within Good boxes (two have been crushed to one side), Excellent to Excellent Plus; (9).

**Estimate:** £60-80



**Lot No. 766**

Lundby The Swedish Doll's House Furniture & Accessories group including: TV, Living room, Garden set, Rug Set, Bathroom set, plus others, within Good Plus boxes, Excellent to Excellent Plus; (9).

**Estimate:** £60-80



**Lot No. 767**

Lundby The Swedish Doll's House, Home Sweet Lundby Furniture & Accessories group including: Kitchen set, Garden set, Christmas set, Rug Set, Curtains, plus others, within Good Plus boxes, Excellent to Excellent Plus; (12).

**Estimate:** £60-80



**Lot No. 768**

Lundby The Swedish Doll's House, Home Sweet Lundby Furniture & Accessories group including: Horse & Rider, Music set, Garden set, Rug Set, Curtains, Fireplace, plus others, (some loose sets- see photo), within Good Plus boxes, Excellent to Excellent Plus; (14).

**Estimate:** £60-80



**Lot No. 769**

Steiff Tom cat (from Tom and Jerry), white tag 354588, LE 2000, mohair, swing label, certificate, within Good Plus box, trade carton, Excellent to Excellent Plus, 13"/33cm.

**Estimate:** £80-120



**Lot No. 770**

Lundby The Swedish Doll's House, Brio Mobila Furniture & Accessories group including: Living Room Sofa, Horse, Tea set, Gallavanter petal leaf seat, shelves, plus others, (some loose sets- see photo), within Fair packaging, Good to Good Plus; (15).

**Estimate:** £50-70



**Lot No. 771**

Vintage Lundby House Furniture & Accessories group including: kitchen, lights, bed, plus others within Fair Plus to Good packaging, Excellent to Excellent Plus; (Qty).

**Estimate:** £60-80



**Lot No. 772**

Vintage Lundby House Furniture & Accessories group including: sofa, lights, kitchen, plus others within Fair Plus to Good packaging, Excellent to Excellent Plus; (Qty).

**Estimate:** £60-80



**Lot No. 773**

Vintage Lundby House Furniture & Accessories group including: sofa, lights, kitchen, plus others within Fair Plus to Good packaging, Excellent to Excellent Plus; (Qty).

**Estimate:** £60-80



**Lot No. 774**

Vintage Lundby House Furniture & Accessories group including: sofa, lights, kitchen, plus others within Fair Plus to Good packaging, Excellent to Excellent Plus; (Qty).

**Estimate:** £60-80



**Lot No. 775**

Collection of vintage Miniature Food, Tins, Boxes, Bottles for dolls including Bodo Hennig, plus others, (some of the boxes have leaked, which have been bagged separately, otherwise Good to Good Plus; (Qty).

**Estimate:** £30-50



**Lot No. 776**

Vintage Lundby & similar House Furniture & Accessories group including: sofas, lights, kitchens, tables, rugs, plus others Good (Qty).

**Estimate:** £60-80



**Lot No. 777**

Steiff Jerry mouse (from Tom and Jerry), white tag 354595, LE 2000, brown and cream mohair, swing label, certificate, Near Mint to Mint, within Near Mint to Mint box, trade carton, 8"/20cm.

**Estimate:** £70-90



**Lot No. 778**

Lundby Dolls House & Accessories including: Caroline's Home bedroom, Caroline's Home Lighting set, Caroline's Home Horse and doll, Caroline's Home Pet set, Lisa Light, plus others, unchecked for completeness or correctness, foxing to dolls house otherwise Fair Plus to Good Plus; (Qty).

**Estimate:** £20-40



**Lot No. 779**

Lundby, Vintage Leksand Blue House Furniture & Accessories group including: chairs, chest, tables, rocking chair, plus others within Fair Plus to Good packaging, Excellent to Excellent Plus; (Qty).

**Estimate:** £20-30



**Lot No. 780**

Steiff Unicorn, white tag 038174, LE 1500, alpaca, celebrating 25 year anniversary, certificate, within Good Plus box, Good Plus to Excellent, 10"/25cm.

**Estimate:** £40-60



**Lot No. 781**

Steiff Teddytaur, white tag 037351, LE 1500, light brown alpaca, certificate, within Good Plus box with outer trade carton, Good Plus to Excellent, 12"/31cm tall.

**Estimate:** £60-80



**Lot No. 782**

Steiff The Wind in the Willows Toad, white tag 037016, LE 4000, mohair, within Good Plus box with outer trade carton, Good Plus to Excellent, 10"/25cm.

**Estimate:** £70-90



**Lot No. 783**

Steiff Fritzie The Rabbit with Music Box, white tag 037078, LE 2007, white mohair, the music box plays whilst he is turning his head in a circle, certificate, within Good Plus box with outer trade carton, Excellent Plus, 15"/38cm.

**Estimate:** £70-90





**Lot No. 784**

Steiff Karl Lagerfeld teddy bear, white tag 657726, LE 2500, 2008, white alpaca, white gold coated button within his ear, designed to be a likeness of the famous fashion designer, in collaboration with Karl Lagerfeld, the clothes and accessories were designed in his Paris Studio and the materials were individually selected. His black jacket is of Italian wool, white poplin shirt with standing collar and trompe l'oeil look button holes, jeans with a patina from the K Karl Lagerfeld collection, black silk cravat and Swarovski crystal, belt of real leather, the initials of the "maestro" are set in crystals on the buckle, tailor-made boots, miniature glasses from the "Lagerfeld eyewear" line. Excellent Plus to Near Mint, certificate, stand and Excellent box (light creases to box), 16"/40cm.

**Estimate:** £600-800



**Lot No. 785**

Steiff Saint Bernard dog with Barry, white tag 993701, LE 1500, 2005, comprising Friar of The Great St. Bernard Hospice, located in Switzerland, and his Saint Bernard dog, Saint Bernard, 12"/30cm and Barry, 5.5"/14cm, certificate, within Good Plus presentation box with outer trade carton, Excellent Plus.

**Estimate:** £50-70



**Lot No. 786**

Steiff Beatrix Potter Lemming Puddle-Duck, white tag 653445, 2006, LE 1500, UK and Ireland exclusive, white alpaca, swing label certificate, within Excellent box & outer trade carton, Excellent to Excellent Plus; 15"/38cm.

**Estimate:** £60-80



**Lot No. 787**

Steiff Smoker Shepherd Bear with Lamb, white tag 037153, LE 3000, 2008, beige mohair jointed teddy bear with smoking function, (by removing the head and placing an incense cone inside a metal holder and lighting has been used), wearing woollen cloak and hat, accompanied by white alpaca lamb on wooden base, certificate, within Good box, Good Plus to Excellent, 9"/24cm.

**Estimate:** £70-90



**Lot No. 788**

Steiff Teddy Clown, white tag 037528, LE 2006 pieces, white and blue mohair, wearing white felt hat (small dent to the top of the hat) adorned with red pom-poms, certificate (creased), within Excellent box & outer trade carton, Excellent to Excellent Plus; 15"/38cm.

**Estimate:** £50-70



**Lot No. 789**

Steiff Museum Collection pair including: (1) Tyros replica, white tag 401718, LE 4000, mohair, within Fair Plus to Good box, 8"/20cm; (2) Pinguin replica, white tag 0105/17, mohair, within Fair Plus box, 7"/18.5cm; Good Plus; (2).

**Estimate:** £50-70



**Lot No. 790**

Steiff Museum Collection Dinos replica, white tag 401701, LE 4000, mohair, within Fair box, Good Plus, 5"/13cm.

**Estimate:** £30-50



**Lot No. 791**

Steiff Beatrix Potter Tommy Brock Badger, white tag 662478, LE 1500, alpaca, exclusive to UK and Ireland, 2008, swing certificate, within Good Plus box with outer trade carton, Excellent to Near Mint; 13"/33cm.

**Estimate:** £60-80



**Lot No. 792**

Steiff The Muppets Kermit Frog Special Edition, 2009, white tag 680397, LE 369/1500, North American Exclusive, green mohair, carry bag, outer trade carton, Near Mint to Mint, with swing label, certificate, 13"/33cm.

**Estimate:** £80-100



**Lot No. 793**

Steiff Father Christmas Teddy Bear with Reindeer, 2000, white tag 670565, LE 2500, mohair bear and reindeer, plus sleigh, certificate, within Good to Good Plus box (creases to plastic), outer trade carton, Good Plus to Excellent, bear 7"/18cm, reindeer 6.5"/16.5cm, sleigh 5.25"/13.5cm.

**Estimate:** £60-80



**Lot No. 794**

Steiff The Frog King, white tag 671180, LE 1500, Germany exclusive, mohair, certificate, within Good Plus box with outer trade carton, Good Plus to Excellent, Bear 11"/28.5cm, Frog 4"/10.5cm.

**Estimate:** £80-100



**Lot No. 795**

Steiff Beatrix Potter Mrs Tiggy-Winkle, white tag 661822, 2005, LE 1500, mohair, swing label certificate, within Good Plus box with outer trade carton, Good Plus to Excellent, 9"/22cm.

**Estimate:** £60-80



**Lot No. 796**

Steiff Danbury Mint Doctor Who 50th Anniversary teddy bear, white tag 664571, LE 5000, 2013, blonde mohair, with certificate, drawstring bag, Excellent to Excellent Plus; 10"/26cm.

**Estimate:** £100-140



**Lot No. 797**

Steiff Circus Series Strong Man Gorilla, 1990, made exclusively for the USA, brown mohair Gorilla, white tag 0144/19, LE 5000, chest tag, within Good Plus, Excellent Plus, 7.5"/19cm.

**Estimate:** £40-60



**Lot No. 798**

Steiff Shepards hut from the Nativity Series, white tag 037450, LE 1000, includes two x mohair bears, three x alpaca sheep, certificate, within Good box with outer trade carton, Good Plus to Excellent, hut H x 8.5"/22cm, D x 9"/23.5cm, W x 11.5"/30cm, largest bear 7.5"/19.5cm.

**Estimate:** £80-120



**Lot No. 799**

Steiff Club Edition Camel on Wheels 1930s replica, 1995/96, white tag 420061, LE, sand mohair, certificate, within Good Plus box with outer trade carton, Excellent to Excellent Plus, 13.75"/35cm.  
**Estimate:** £60-80



**Lot No. 800**

Steiff Paddington Bear, white tag 354250, LE 5000, mohair, swing label certificate (creased), within Good Plus box, Excellent to Excellent Plus, 12.5"/32cm.  
**Estimate:** £80-100



**Lot No. 801**

Steiff Easter trio including: (1) Miniature Easter Diorama, white tag 038228, LE 2004, comprising mohair rabbit and chick, displayed upon a mohair-covered base, the chick nestles in a half eggshell made from porcelain, certificate, within Good Plus box with outer trade carton, 21cm diameter; (2) Rolly Polly Hare, white tag 038211, LE, mohair, within Good box (window is yellowed), 7"/18.5cm; (3) Rolly Polly Hare, white tag 038211, with blank button and no ear tag, mohair, swing label, 7"/18.5cm; Excellent to Excellent Plus; (3).  
**Estimate:** £60-80



**Lot No. 802**

Steiff trio of Club Edition egg cosy sets: (1) Bear and Elephant, club edition 2004, white tag 420436, chest tags, 5"/12cm; (2) Hen and Chick, club edition 2003, white tag 420344, chest tags, 4.75"/12cm; (3) Rabbit and Lamb, club edition 2002/2003, white tag 420276, 5"/12cm; MISSING certificates and boxes; Excellent to Excellent; (3).  
**Estimate:** £50-70



**Lot No. 803**

Steiff Rupert the Bear teddy bear pair including: (1) Edward Trunk Classic, white tag 653575, LE 1500, exclusive to UK and Ireland, grey mohair elephant, certificate, 11"/28cm, (2) Bear Algy Classic, white tag 653582, LE 1500 exclusive to the UK and Ireland, light brown alpaca Pug Dog, certificate, 12"/30cm, both within Excellent packaging, outer trade carton, Excellent to Excellent Plus; (2).  
**Estimate:** £60-80



**Lot No. 804**

Steiff Christmas trio including: (1) Teddy Bear with Trumpet, white tag 037887, LE 5000, mohair, certificate, within Good Plus box with outer trade carton, 4"/10.5cm; (2) Teddy Bear Nutcracker Ornament, North American Exclusive, white tag 667480, LE 2004, mohair, certificate, within Good Plus box with outer trade carton, 4"/10.5cm; (3) Mouse Santa Ornament, North American Exclusive, white tag 668074, LE 2004, mohair, certificate, within Good Plus box with outer trade carton, 4"/10.5cm; Excellent; (3).  
**Estimate:** £60-80



**Lot No. 805**

Steiff Miniature Town Mouse & Country Mouse, white tag 669613, mohair, chest tag, within Excellent box & outer trade carton, Excellent Plus; 5"/13cm.  
**Estimate:** £50-70





**Lot No. 806**

Steiff Miniature Animal pair including: (1) Baby Donkey ornament, North American Exclusive, white tag 667114, grey mohair Donkey, Limited Edition of 2003, 4.5"/11cm, (2) Baby Panda ornament, North American Exclusive Christmas Exclusive for 2007, white tag 669774, black and white mohair, 5"/13cm, both within Good Plus packaging (loose in box), outer trade carton, Excellent Plus; (2).

**Estimate:** £60-80



**Lot No. 807**

Steiff Miniature bird pair including: (1) Hummingbird, white tag 667572, LE 2004, for The Toy Shoppe fine collectibles since 1975, green, red, yellow mohair, 4"/10cm, (2) Dove, North American Christmas Exclusives LE 2004, white tag 667497, white mohair, with certificate, 4"/10cm, both within Good Plus packaging (loose in box), outer trade carton, Excellent Plus; (2).

**Estimate:** £60-80



**Lot No. 808**

Steiff Christmas Trio including: (1) Snowflake Ornament, North American Exclusive, white tag 666971, LE 2003, mohair and felt, certificate, within Good Plus box with outer trade carton, 4"/10cm; (2) Moose Ornament, North American Exclusive, white tag 668043, LE 2005, mohair, certificate, within Good Plus box with outer trade carton, 5"/13cm; (3) Bell-Ringer Ornament 2003, white tag 037870, LE 5000, mohair, certificate, within Good box with outer trade carton, 4.5"/11cm; Excellent; (3).

**Estimate:** £60-80



**Lot No. 809**

Steiff Christmas Trio including: (1) Nutcracker Ornament, North America Exclusive, white tag 667480, LE 2004, mohair, certificate, within Good Plus box, 4"/10cm; (2) Teddy Bear in Star Ornament, white tag 037764, LE 5000, mohair and felt, certificate, within Good Plus box with outer trade carton, 4"/10cm; (3) Holiday Swan, North America Exclusive, white tag 668579, LE 1500, mohair, certificate, within Good Plus box, 4"/10cm; Excellent; (3).

**Estimate:** £60-80



**Lot No. 810**

Steiff Miniature teddy bear trio: (1) Polar Bear Ornament, white tag 037375, LE 2006, white mohair, certificate, 5"/13cm, (2) Penguin Ornament, North American Christmas Exclusives 2004, white tag 667503, white & black mohair, certificate, 4"/10cm, (3) Roly Poly Santa, white tag 037894, mohair, LE 5000, 5"/13cm, all within Good Plus packaging, Excellent to Excellent Plus; (3).

**Estimate:** £60-80



**Lot No. 811**

Steiff Beatrix Potter Hunca Munca Mouse, celebrating 100 Years of the publication of the original tale, white tag 661648, LE 1500, with swing label certificate, Excellent Plus, within Excellent Plus to Near Mint box, 4.75"/12cm.

**Estimate:** £60-80



**Lot No. 812**

Steiff Christmas Trio including: (1) Christmas Lamb Ornament, North American Exclusive, white tag 667121, LE 2003, mohair, certificate, within Good box with outer trade carton, 4"/10cm; (2) Camel Ornament, North American Exclusive, white tag 6671328, LE 2003, mohair, certificate, within Good Plus box with outer trade carton, 4.5"/11cm; (3) Ball Ornament, white tag 037429, LE 2006, mohair, certificate, within Good Plus box, 2.5"/6cm; Excellent Plus; (3).

**Estimate:** £60-80



**Lot No. 813**

Steiff Beatrix Potter Collection The Mouse Tailor, white tag 354236, LE 1500, white wool plush mouse with airbrushed features, seated upon wooden cotton reel reading his paper "The Tailor and Cutter", character from The Tale of Gloucester by Beatrix Potter, swing label certificate, Excellent Plus, within Excellent box; 6.75"/17cm.

**Estimate:** £60-80



**Lot No. 814**

Steiff Margarete Steiff Papageno Musical Teddy Bear, black tag 420887, 6th in the Series of special Club Editions, plays Mozart's "The Magic Flute", originally only available to Steiff Club Members via a process of lottery, green mohair complete with original booklet, Mint, within Near Mint box, 12.5"/32cm.  
**Estimate:** £200-250



**Lot No. 815**

Steiff Beatrix Potter pair including: (1) Benjamin Bunny Rabbit, 100th Year Anniversary Edition, 2004, white tag 354335, LE 1500, with swing label certificate, (MISSING BOX), 27cm/10.5", (2) Peter Rabbit, 100 Years Anniversary Edition, white tag 354168, LE, with swing certificate, (MISSING box lid) 10.5"/27cm, Good Plus to Excellent; (2).  
**Estimate:** £60-80



**Lot No. 816**

Steiff Reindeer pair including: (1) Christmas Deer, white tag 670893, LE 3000, mohair, certificate, within Good Plus box with trade cartoon, 8"/20cm; (2) Christmas Stag, white tag 037771, mohair, certificate, within Good Plus box with trade carton, 10"/26cm; Excellent to Excellent Plus; (2).  
**Estimate:** £50-70



**Lot No. 817**

Steiff Christmas group including: (1) Christmas Tree Bear, white tag 670329, LE 5000, mohair and felt, 4"/10.5cm; (2) Present Bear, white tag 670558, LE 5000, mohair and felt, 4"/10.5cm; (3) Christmas Tree Bear, white tag 655296, LE 5000, mohair, 4"/10.5cm; (4) Holly Berry Bear, white tag 666490, LE 5000, mohair, 4"/10.5cm; (5) spare candy cane outfit to fit 4" bear; within Good boxes, Excellent; (5).  
**Estimate:** £60-80



**Lot No. 818**

Steiff pair including: (1) Beatrix Potter Mr Jeremy Fisher, white tag 354243, LE 1500, mohair, with swing label certificate, (MISSING lid), 7"/18cm (seated), (2) Wind in the Willows Badger, white tag 37030 (discolouration to tag), limited edition 4000, black and white mohair, swing labels, MISSING box, 11"/28cm, both Good Plus to Excellent; (2).  
**Estimate:** £60-80



**Lot No. 819**

Steiff Snoopy and Woodstock on Rooftop, white tag 682360, mohair and felt, swing label, within Good Plus box with outer trade carton, Excellent Plus to Near Mint, 9.5"/24.5cm tall.  
**Estimate:** £80-120



**Lot No. 820**

Steiff Beatrix Potter Pigling Bland, white tag 653513, exclusive to UK and Ireland, LE 1500, 2008, alpaca, swing label certificate, within Fair to Good box (squashed, crease), Excellent to Excellent Plus; 13"/33cm.  
**Estimate:** £50-70



**Lot No. 821**

Steiff animal pair including: (1) Beatrix Potter Squirrel Nutkin, white tag 354304, LE 1500, mohair, with swing label certificate, (MISSING box lid), 6"/15cm, (2) Sigi the Hedgehog, white tag 037092, limited edition of 2008, mohair tipped Hedgehog with internal musical movement "Muss I denn...", certificate, (untested), 8"/20cm, Good to Good Plus; (2).  
**Estimate:** £60-80



**Lot No. 822**

Steff Beatrix Potter Timmy Willie Mouse, white tag 663222, alpaca, LE 1500, 2009, exclusive to UK and Ireland, swing label certificate, within Excellent box with trade carton, Excellent to Near Mint, 4.75"/12cm.  
**Estimate:** £60-80



**Lot No. 823**

Steff Trio including: (1) Magic Forest Teddy Bear, white tag 025945, LE 2000, certificate, within Excellent box with outer trade carton, 7"/18.5cm; (2) Magic Forest Owl, white tag 025907, LE 2000, certificate, within Excellent box with outer trade carton, 6"/16cm; (3) Magic Forest Owl keyring, white tag 025914, LE 2000, certificate, within Excellent box with outer trade carton, 3"/8cm; Excellent Plus to Near Mint; (3).  
**Estimate:** £60-80



**Lot No. 824**

Steff felt pin cushion trio including: (1) Camel on a Pin Cushion 1904 replica, white tag 420474, certificate, within Good Plus box, 7"/18cm; (2) Club Edition Little Elephant Pin Cushion, limited to year, white tag 420313, certificate, 3"/8cm, (3) Club Edition Frog Pincushion 1903 replica, white tag 420368, LE to 2003, certificate, 2"/5cm, all Good Plus to Excellent Plus; (3).  
**Estimate:** £50-70



**Lot No. 825**

Steff Museum Collection trio including: (1) 1880 felt Elephant Replica 1984-1987, white tag 0080/08, LE 10000, ID Nr.: A84-001001, beige felt, 3"/8cm; (2) Steiff Museum Collection Duck, white tag 0081/14, LE 4000, felt and velveteen, 5.5"/14cm, (3) 1924 See-Saw, white tag 0132/24, LE 4000, mohair, 4.25"/11cm (height), all within Fair to Good boxes (discolouration to packaging, cracks and creases - see photos), Good to Good Plus; (3).  
**Estimate:** £60-80



**Lot No. 826**

Steff Christmas group including: (1) Steiff Snowman with Raven, white tag 037962, LE 3000, mohair, certificate, within Excellent box, 7"/18cm; (2) Coal, North American Exclusive, white tag 030567, LE 3500, mohair, certificate, within Good box, 4"/10.5cm; (3) Tinsel, North American Exclusive, white tag 030000, LE 2500, mohair, certificate, within Good box, 4"/10.5cm; (4) Percussion, North American Exclusive, white tag 665066, LE 3500, mohair, certificate, within Good box, 4"/10.5cm; Excellent Plus; (4).  
**Estimate:** £60-80



**Lot No. 827**

Steff Christmas ornament group including: (1) Karstadt, white tag 656231, LE 1500, blue mohair teddy bear hanging within glass Christmas ornament, certificate, within Good Plus box, 3"/8cm; (2) Teddy Bear Snowflake ornament, white tag 034982, LE 1500, mohair, certificate, within Good box with outer trade carton, 4"/10.5cm; (3) Teddy Bear Elf ornament, white tag 036729, LE 1500, mohair, certificate, within Good box with outer trade carton, 4"/10.5cm; (4) Teddy Bear Poinsettia ornament, white tag 038396, LE 2007, mohair, certificate, within Good box with outer trade carton, 4"/10.5cm; Excellent to Excellent Plus; (4).  
**Estimate:** £80-100



**Lot No. 828**

Steff Miniature teddy bear pair including: (1) Steiff Bride & Groom, yellow tag 027918 & 027925, both come with swing label tag, 4"/10cm, (2) Teddy bear Mozart ornament, LE 2006, mohair, certificate, 4"/10cm, both within Good Plus boxes, Excellent; (2).  
**Estimate:** £50-70





**Lot No. 829**

Steiff Classic Rupert the Bear, white tag 653568, LE 3000, alpaca, with certificate, Excellent Plus to Near Mint, within Excellent Plus box; 11"/28cm.

**Estimate:** £50-70



**Lot No. 830**

Steiff Beatrix Potter Mr Jeremy Fisher, white tag 354243, LE 1500, mohair, with swing label certificate, Excellent Plus to Near Mint within Excellent box, with outer trade carton, 7"/18cm (seated).

**Estimate:** £50-70



**Lot No. 831**

Steiff teddy bear pair including: (1) Breughel Flemish Painter Bear, 1997, Belgian Exclusive, white tag 659942, LE 1847, mohair, with certificate, chest tag, 17.75"/42cm, (2) Austria Bear, 1995, white tag 650871, LE 1500, caramel mohair, certificate, 15.75"/40cm, both within Good Plus boxes, Excellent; (2).

**Estimate:** £60-80



**Lot No. 832**

Steiff Husky Sledge Set, in co-operation with Fulder Tyres, white tag 038617, LE 3000, 1998, Husky with harness and metal sledge basket, Excellent, within Good Plus boxes, with outer trade carton, 6"/15cm; (2).

**Estimate:** £60-80



**Lot No. 833**

Steiff Christmas Ornament Group including: (1) Snowball ornament, white tag 037566, LE 5000, mohair, certificate, within Good Plus box within outer trade carton, 4"/11cm; (2) Teddy Bear with Mistletoe, white tag 037610, LE 5000, mohair, certificate, within Good Plus box within outer trade carton, 4"/11cm; (3) Yellowhammer Ornament, white tag 037689, LE 5000, mohair, certificate, within Good Plus box within outer trade carton, 3"/8cm; (4) Bluetit Ornament, white tag 037856, LE 5000, mohair, certificate, within Good Plus box within outer trade carton, 3"/8cm; Excellent Plus; (4).

**Estimate:** £60-80



**Lot No. 834**

Steiff Husky Set, with Musher in co-operation with Fulder Tyres, white tag 038624, LE 3000, 1999, pair of black and white mohair Husky Dogs, polyester Musher Doll, within Good Plus boxes, complete with outer trade carton, Excellent, Husky, 6"/15cm, Musher, 15"/38cm; (2).

**Estimate:** £60-80



**Lot No. 835**

Steiff Husky set, with Polar Bear in co-operation with Fulder Tyres, white tag 038631, LE 3000 pair of black Huskies with white faces, large Polar Bear, within original Good Plus boxes with outer trade carton, Excellent, Huskies 6"/15cm, Bear 15.75"/40cm; (2).

**Estimate:** £60-80



**Lot No. 836**

Steiff Christmas Ornament Group including: (1) Robin ornament, white tag 037993, LE 2007, mohair, certificate, within Good Plus box with outer trade cartoon, 4"/10cm; (2) Teddy Santa Claus ornament, white tag 038877, LE 2008, mohair, certificate, within Good Plus box, 4"/10cm; (3) Teddy Angel ornament, white tag 037863, LE 2003, mohair, certificate, within Good Plus box with outer trade cartoon, 4"/10cm; (4) Little Polar Bear ornament, North American Exclusive, white tag 667107, LE 2003, mohair, certificate, within Good Plus box with outer trade cartoon, 5"/12cm; Excellent Plus; (4).

**Estimate:** £60-80



**Lot No. 837**

Steiff Christmas Group including: (1) Reindeer ornament, white tag 037900, LE 2007, alpaca, certificate, within Good Plus box, 4"/10cm; (2) Christmas Tree Bird ornament, white tag 037917, LE 5000, mohair, certificate, within Good Plus box, 3"/8cm; (3) Gingerbread bear ornament, white tag 670947, LE 5000, mohair, certificate, within Good Plus box, 4"/10cm; (4) Teddy in boot, white tag 670138, LE 5000, mohair, MISSING certificate, within Good Box, 5"/13cm; (5) Snowman Ornament, white tag 670428, LE 5000, mohair, MISSING certificate, within Good box, 5"/13cm; Excellent to Excellent Plus; (5).

**Estimate:** £60-80



**Lot No. 838**

Steiff Winnie the Pooh miniature set, white tag 354205, including: Tiger, Eeyore & Piglet, LE 5000, 2002, mohair, certificate, Excellent Plus to Near Mint, within Good Plus box; 4"/10cm.

**Estimate:** £60-80



**Lot No. 839**

Steiff Siegfried Doll, 701139, LE 600, with green mohair Dragon, white tag 701139, swing label, chest tag, certificate, within Excellent box, Excellent to Near Mint; 16"/41cm.

**Estimate:** £60-80



**Lot No. 840**

Steiff Nutcracker Teddy Bear, white tag 037269, LE 3000, 2008, white mohair Teddy Bear dressed in Nutcracker costume, screw action nutcracker within the bears chest (when the nut is placed in the nutcracker, turn the bears head to the right and the nut is cracked), certificate, within Excellent box & outer trade carton, Excellent Plus; 11.5"/29cm.

**Estimate:** £60-80



**Lot No. 841**

Steiff North American Exclusive Pair including: (1) Skye the Blue Jay, white tag 668517, LE 1500, mohair, certificate, drawstring bag, 5.5"/14.5cm; (2) Oriole Bird, white tag 667411, LE 2004, mohair, certificate, drawstring bag, 4"/10cm; Excellent Plus; (2).

**Estimate:** £60-80



**Lot No. 842**

Steiff Winnie the Pooh pair, including: (1) Eeyore, white tag 651786, grey mohair Donkey, LE with swing label certificate, 10"/25cm; (2) Winnie the Pooh Rabbit, white tag 651731, mohair, LE with swing label, 13.5"/34cm; Both within Good Plus packaging (MISSING box lid), Good Plus to Excellent; (2).

**Estimate:** £60-80



**Lot No. 843**

Steiff Honigschleckerladen (Honey Shop), LE 1176/5000, includes two mohair teddy bears (still within factory sealed bags) Oskar, white tag 609775, 4"/10cm; Bernhard white tag 612177, 4"/10cm; within glass fronted wooden shop diorama with accessories, hand made by the Sammler Gallery, certificate, unchecked for completeness but only appears to be missing one jar, Excellent Plus to Near Mint, shop H x 9.5"/24.5cm, D x 5"/13.5cm, W x 15"/38.5cm. (Qty).

**Estimate:** £140-160



**Lot No. 844**

Steiff teddy bear group including: (1) Mr Tod Fox Beatrix Potter, yellow tag 354847, alpaca, dressed in forest green trousers and jacket, with a red waistcoat & wooden cane, swing label, certificate, 12"/30cm, (2) Marklin HO Gauge Steiff Edition Wagon 48806 of a Goods Wagon with Steiff emblem on sliding door and a toy Lizard with Steiff button and tag, (3) Marklin Covered Good Van and Delivery Truck 100 years of Steiff Teddy Bears, plus others, all Good Plus to Excellent Plus; (Qty).

**Estimate:** £50-70



**Lot No. 845**

Steiff Winnie the Pooh pair, including: (1) Winnie the Pooh, white tag 651489 LE, 10.5"/27cm; (2) Winnie the Pooh Tigger, white tag 651656, LE, 8"/20cm, with swing label certificates (yellowing to white tags), both come with Good boxes (box lids are MISSING), otherwise Good to Good Plus; (2).

**Estimate:** £60-80



**Lot No. 846**

Steiff Winnie the Pooh trio including: (1) Owl, white tag 651793, LE 5000, mohair, swing label certificate, 11"/28cm; (2) Kanga and Roo, white tag 680014, LE 5000, mohair, swing label certificate, 12"/31cm, (3) Piglet, white tag 680021, mohair, swing label certificate, LE 5000, 6"/15cm, all within Good boxes (MISSING box lids), otherwise Good to Good Plus; (3).

**Estimate:** £70-90



**Lot No. 847**

Steiff Exotic bird trio including: (1) Toucan Tulla, yellow tag 064708, swing label certificate, suede feet, black mohair, 11"/28cm, (2) Ostrich Piccy, yellow tag 068706, swing label certificate, suede feet, black mohair, 17"/43cm, (3) Yaya bird, white tag 998645, LE 1500, mohair and felt, chest tag and swing label, 6.25"/16cm, Excellent; (3).

**Estimate:** £60-80



**Lot No. 848**

Steiff Cockatoo Rattle 1898 Replica, white tag 400322, LE 1000, felt, within Good Plus box with outer trade cartoon, Excellent Plus to Near Mint, 11"/28.5cm.

**Estimate:** £80-100



**Lot No. 849**

Steiff bird group x 5 including: (1) Capercaillie Kralos, yellow tag 064470, swing label certificate, mohair, 6.5"/17cm, (2) Stork 2013 Bundle of Joy, yellow tag 057717, swing label certificate, suede feet, white felt, 6"/15cm, (3) Margit bird, yellow tag 057663, LE, mohair, swing label, 4.5"/12cm, (4) Finch, North America Christmas Exclusive for 2006, MISSING yellow tag, mohair, swing label, 4"/10cm, (5) Jan Kingfisher, yellow tag 033230, mohair, swing label, 4"/10cm, all Excellent; (5).

**Estimate:** £60-80



**Lot No. 850**

Steiff bird trio including: (1) Waly Snowy Owl, white tag 036927, LE 1500, mohair, mohair, certificate, within Good Plus box with outer trade carton, 6"/15.5cm; (2) Blue Parrot, yellow tag 057816, mohair, swing label, with stand, 3"/8.5cm; (3) Red Parrot, yellow tag 057809, mohair, swing label, with stand, 3"/8.5cm; Excellent Plus to Near Mint; (3).

**Estimate:** £50-70





**Lot No. 851**

Steiff Heavenly Choir, white tag 037115, LE 14/750, 2008, includes five mohair teddy bears playing harp, clarinet, trumpet, saxophone, and horn; seated upon a white plush cloud base, plays 'Hallelujah', within Good box with outer trade carton, Bears 4"/10cm, base 19"/49cm long.

**Estimate:** £100-140



**Lot No. 852**

Steiff Winnie the Pooh pair including: (1) Classic Pooh 70th Anniversary Winnie The Pooh, white tag 680090, limited to year of production 2001, swing label, MISSING box, 7"/18cm, (2) Winnie the Pooh Ornament, white tag 680113, 2001, LE, blonde mohair, with certificate, with box (squashed), 4.75"/12cm, both Good to Good Plus; (2).

**Estimate:** £40-60



**Lot No. 853**

Steiff Animal pair including: (1) Steiff Sloth original bear, white tag 665523, black plush, chest tag, MISSING swing labels, 21"/54cm, (2) Steiff Monkey Hango Orang-Utan, yellow tag 061998, orange/brown mohair, chest tag, swing labels, 12"/31cm, both Excellent; (2).

**Estimate:** £50-70



**Lot No. 854**

Steiff Dachshund Brush-Dax 1909 replica, white tag 400360, LE 1500, brown velvet, certificate, within Excellent box, Excellent Plus, 8.75"/22cm.

**Estimate:** £50-70



**Lot No. 855**

Steiff mohair animal group x 4 including: (1) Fuchs Fox, sitting, yellow tag 033438, with chest tag, swing labels, 6.25"/16cm, (2) Loppy Wolf, yellow tag 032455, with chest tag, swing labels, 5"/12cm, (3) Steiff Wolf, 0127/22, (MISSING white tag), chest tag, swing label, 9"/23cm, (4) Steiff Little red riding hood wolf, 0127/12 (MISSING white tag, chest tag), 5"/12cm, all Good Plus to Excellent; (4).

**Estimate:** £50-70



**Lot No. 856**

Lundby dolls house furniture group including: Kitchen, Living Room, Bedroom, Gym, Curtains, Piano room, plus others, unchecked for completeness or correctness, within Poor to Fair packaging (majority has been opened), otherwise Fair to Good; (Qty).

**Estimate:** £50-70



**Lot No. 857**

Lundby Sweet Home Dolls House furniture including: beds, sofa, toys, plus others; boxed, unchecked for completeness or correctness, Good; (Qty).

**Estimate:** £30-50



**Lot No. 858**

Lundby dolls house group including: (1) Gotland The Swedish Doll's House, (2) Winter Garden, (3) Garden, (4) Home Sweet Lundby, appears to be all present, but unchecked for completeness or correctness, within Good Plus packaging, Excellent; (4).

**Estimate:** £50-70



**Lot No. 859**

Hornby Flower Fairies Woodland Friends Animal plush group x 4 including: (1) Rabbit, (2) Hedgehog, (3) Squirrel, (4) Badger, MISSING Fairy Rider dolls, all Good Plus to Excellent; (4).

**Estimate:** £50-70



**Lot No. 860**

Hornby Flower Fairies, Fairy Tree House Magic Blue, #T882, accessories are still with factory sealed bag, within Fair Plus to Good box (tear), unchecked for completeness or correctness; Good Plus.

**Estimate:** £60-80



**Lot No. 861**

PLEASE CONTACT US FOR A POSTAGE QUOTE: Group of Lebkuchen-Schmidt tin group of various sizes, depicting the works of several master artists, some small scratches and scuffs otherwise Good to Good Plus; (Qty).

**Estimate:** £30-50



**Lot No. 862**

PLEASE CONTACT US FOR A POSTAGE QUOTE: Group of Lebkuchen-Schmidt tin group of various sizes, depicting the works of several master artists, some small scratches and scuffs otherwise Good to Good Plus; (Qty).

**Estimate:** £30-50



**Lot No. 863**

Steiff Animal group including: (1) Moritz the Bat, white tag 667565, North American exclusive, mohair/felt, within drawstring bag, certificate, 7"/18cm, (2) Flori Sheep, 1978-1987, yellow tag 1518/11, button, plush, chest tag, swing label, 4.5"/11cm, (3) Steiff Snucki mountain sheep, yellow tag 1520/11, 1959-1974, plush, chest tag, 6"/15cm, (4) Baba Black Sheep, white tag 0144/12, black mohair, swing label, 5"/12cm, (5) Skorpi Skorpion, yellow tag 057205, swing label, 6"/15cm, (6) Billy Possum, yellow tag 07200, chest tag, swing label, 10"/26cm, all Good Plus to Excellent; (6).

**Estimate:** £50-70



**Lot No. 864**

Steiff Animal Cosy group x 4 including: (1) Cosy Crabby Beetle, yellow tag 099656, chest tag, swing label, 8"/20cm, (2) Cosy Cubby Maybug, yellow tag 094002, chest tag, swing label, 8"/20cm (3) Flaps Bat, yellow tag 056710, chest tag, swing label, 8"/20cm, (4) Cosy Flappy, yellow tag 099557, chest tag, swing label, 8"/20cm, all Good Plus to Excellent; (4).

**Estimate:** £40-60



**Lot No. 865**

PLEASE NOTE THIS LOT IS COLLECTION ONLY: Lundby Dolls House & furniture group including: House, Home Extension, Garage with Laundry Room, boxed furniture, Carolines Home sealed home accessories; unchecked for completeness or correctness; Good to Good Plus; (Qty).

**Estimate:** £60-80



**Lot No. 866**

PLEASE NOTE THIS LOT IS COLLECTION ONLY: Lundby Dolls House & furniture group including: House, Extension, boxed and loose furniture, Carolines Home sealed and loose home accessories; unchecked for completeness or correctness; Good to Good Plus; (Qty).

**Estimate:** £40-60



**Lot No. 867**

PLEASE NOTE THIS LOT IS COLLECTION ONLY: Lundby dolls house and furniture group plus others including: dolls & figures, frames, chairs, fireplace, dolls house, extension, garage, plus others, unchecked for completeness or correctness, Good to Good Plus; (Qty).

**Estimate:** £60-80



**Lot No. 868**

Ashton-Drake Galleries Gene doll pair including: (1) Simply Gene; (2) Gene in Pin-Up; within Good Boxes (some dust within the boxes), Excellent to Near Mint; (2).

**Estimate:** £40-60



**Lot No. 869**

Peg Doll & Puppet group including: (1) Group of wooden peg dolls, various sizes largest 12"/31cm; (2) wooden puppet stage (19.5"/50cm high), with two puppets including a policeman; Fair Plus to Good; (Qty).

**Estimate:** £40-60



**Lot No. 870**

Costume Doll group including: plastic, composition, cloth; dressed in a range of outfits mostly Asian and African styled, plus others; Good; (Qty).

**Estimate:** £30-50



**Lot No. 871**

Costume Doll group: mostly plastic/celluloid, dress in a range of costumes and state dress such as Welsh and Scottish; plus others; Good; (Qty).

**Estimate:** £30-50



**Lot No. 872**

Wooden/Celluloid doll group, in various outfits, Fair Plus to Good; (Qty).

**Estimate:** £30-50



**Lot No. 873**

Vintage Doll mixed group including: bisque, celluloid, vinyl and other, mix of full dolls and spare parts; Fair Plus to Good; (Qty).

**Estimate:** £30-50





**Lot No. 874**

Vintage Mixed Doll group including: Simon & Halbig painted bisque doll impressed 170-3/0; hard plastic (Pedigree & Roddy), cloth, composition, plus others; Good; (Qty).

**Estimate:** £50-70

**Lot No. 875**

Mixed group of doll parts & accessories including: doll heads and faces, eyes, eye lashes, wigs (some bagged/boxed others are loose), clothing (shoes, hats and other), plus other; Good to Good Plus; (Qty).

**Estimate:** £60-80



**Lot No. 876**

Pedigree Sindy & other group including: (1) two x Pedigree Sindy; (2) Debenhams Debbie doll; a little dusty otherwise Good Plus; (3).

**Estimate:** £40-60



**Lot No. 877**

Steiff Circus Series Strong Man Gorilla, 1990, made exclusively for the USA, brown mohair Gorilla, white tag 0144/19, LE 5000, chest tag, within Good Plus, elastic on hat strap has gone loose otherwise Excellent Plus, 7.5"/19cm.

**Estimate:** £40-60



**Lot No. 878**

Steiff limited edition (5000) Golden Age of the Circus Set, German, 1989, (0100/89) mohair tiger, white tag 0138/10, card chest tag, wooden cage, with certificate, within Fair to Good box (discolouration), Good to Good Plus; tiger 4"/10cm.

**Estimate:** £80-120



**Lot No. 879**

Steiff Circus Series Chimp on Unicycle, white tag 0143/19, mohair, chest tag, within Good to Good Plus box, elastic on hat strap has gone loose otherwise Excellent Plus, 9.5"/25cm.

**Estimate:** £40-60



**Lot No. 880**

Steiff Circus pair including: (1) Kangaroo Juggler, white tag 650536 (0148/19), mohair, chest tag, 7"/18.5cm; (2) Cat Bandman, white tag 0122/19, mohair, paint chips and peeling to drum, 7.5"/19cm; both within Good to Good Plus boxes; Good Plus to Excellent; (2).

**Estimate:** £60-80



**Lot No. 881**

Steiff limited edition (5000) Golden Age of the Circus Set, German, 1988, (0100/88), mohair giraffe, white tag 0137/28, card chest tag; wooden cage, complete with certificate and box, within Good box (discolouration, otherwise Good to Good Plus (some marks - see photos); giraffe; 11"/28cm.

**Estimate:** £80-120



**Lot No. 882**

A Steiff limited edition (5000) Golden Age of the Circus Set, German, 1990, (0100/90) two mohair Dicky teddy bears in white (0172/16) and blonde (0172/17), card chest tags; wooden cage, complete with certificate and box, within Good box (discolouration to box), otherwise Good to Good Plus; bears, 6.5"/16cm & 7"/17cm.

**Estimate:** £80-120



**Lot No. 883**

Steiff Circus Series Jumping Tiger, white tag 650543, mohair, chest tag, within Good box, Good Plus to Excellent, 9"/23cm.

**Estimate:** £30-50



**Lot No. 884**

Steiff Circus Series Bare Back Rider Set, 1991, made exclusively for the USA, white tag 650550, mohair bear, pair of white mohair horses, complete with chest tags and swing label, Good Plus to Excellent, within Fair Plus to Good box, bear 6"/15cm, horses 7"/18cm.

**Estimate:** £60-80



**Lot No. 885**

Steiff Circus Calliope and Elephant on Wheels, white tag 0100/86, handmade wooden Calliope (music box is untested), mohair elephant, certificate, degrading to leather strap and colour transfer to mohair otherwise Good Plus; 9"/23.5cm.

**Estimate:** £60-80



**Lot No. 886**

Steiff limited edition (5000) Golden Age of the Circus Set, German, 1987 (0100/87) mohair Leon lion, white tag 0136/15, card chest tag; wooden lion's cage (some marks - see photo), MISSING certificate, within Good box (discolouration), otherwise Good to Good Plus; lion 6"/15cm.

**Estimate:** £80-100



**Lot No. 887**

Marx Toys vintage Sindy doll, 1978, within unopened Good Plus original box, box insert has reacted to dolls leg (please see photograph), otherwise Excellent Plus to Near Mint.

**Estimate:** £80-120



**Lot No. 888**

Pedigree Sindy doll trio including: (1) Fun Time Sindy 1986, blond hair, green & white #42050, (2) Sindy's Friend Mark #42101, (3) Fun Time Sindy 1986, blond hair, polka dot top & blue trousers #42050, all within Good to Good Plus (some items may be loose within box), otherwise Excellent to Excellent Plus; (3).

**Estimate:** £60-80



**Lot No. 889**

Topper Dawn Doll outfit group including: (1) Blue dress, #0712; (2) Orange Suit, #0718; (3) Rain coat, #0720; all within Good Plus original packaging; Excellent Plus to Near Mint; (3).

**Estimate:** £60-80



**Lot No. 890**

Pedigree Sindy doll trio including: (1) Fun Time Sindy 1986, blond hair, red dress #42050, (2) Silver Skater Sindy, white ice skating outfit & ice skates #42059, (3) Fun Time Sindy 1986, blond hair, white patterned dress (some foxing to dress - see photo) #42050, all within Good to Good Plus, Good to Excellent; (3).

**Estimate:** £60-80



**Lot No. 891**

Mattel Barbie Ken Outfit pair including: (1) Terry Togs, # 784, water damage to box; (2) Graduation, # 0795; within Fair Plus to Good original packaging; Excellent Plus; (2).

**Estimate:** £60-80



**Lot No. 892**

Ideal Tammy doll outfit trio including: (1) Dream Boat outfit #9153, (2) Purl One #9119, (3) Model Miss #9173, all within Good original packaging (some creases- see photo), otherwise Excellent to Excellent Plus; (3).

**Estimate:** £60-80



**Lot No. 893**

Mattel Barbie Ken Outfit pair including: (1) Masquerade, # 794, water damage to box; (2) Rally Day, # 788; within Fair Plus to Good original packaging; Excellent Plus; (2).

**Estimate:** £60-80



**Lot No. 894**

Pedigree Sindy Ballerina doll #42055, fully poseable, 15 moving joints, 1986, blond hair, comes with 2 outfits, within Good to Excellent box (crack to plastic - see photo), otherwise Excellent to Excellent Plus.

**Estimate:** £60-80



**Lot No. 895**

Mixed teddy bear group including: Clemens (mohair and plush); Merrythought Cheeky Coco Bean; Robin Rive; Deans Rag Book; Good to Good Plus; (7).

**Estimate:** £60-80



**Lot No. 896**

Artist mohair Teddy Bear Group x nine including: Hellis Bears; Kelly Bears; Jacquelines Bears of Bottesford; plus others; Good to Good Plus, largest 16"/41cm.

**Estimate:** £60-80



**Lot No. 897**

Artist mohair Teddy Bear Group x nine including: Katy Bears, H & M Bears, Grandee Bears; plus others; some are MISSING swing labels, Good to Good Plus, largest 25"/64cm.

**Estimate:** £60-80





**Lot No. 898**

Vintage British Teddy Bear Trio including, Chiltern, Pedigree and others, mohair (thinning and balding), Fair Plus to Good, largest 16"/41cm.

**Estimate:** £20-40



**Lot No. 899**

Mixed Teddy Bear & Doll group including: vinyl dolls; range of plush and mohair bears (includes Steiff miniature bears although both have MOTH damage); Fair Plus to Good; (Qty).

**Estimate:** £10-30



**Lot No. 900**

Steiff Disney Winnie The Pooh 95th Anniversary Set, white tag 355875, includes Winnie the Pooh, Piglet, Eeyore and Tigger; mohair, swing label, certificate, mohair, within Good Plus box, Excellent to Excellent Plus; average size 4"/10cm; (4).

**Estimate:** £120-140



**Lot No. 901**

Three O'Clock Bears Sweet Pea, artist designed teddy bear by Jenny Johnson, OOAK (special commission), blonde plush, cloth sewn-in label, black glass eyes, shaven muzzle, brown vertically stitched nose, fully jointed, ultrasuede pads, wearing pink bow, swing label certificate, Near Mint; 10"/26cm.

**Estimate:** £160-180



**Lot No. 902**

Steiff Karstadt Sherlock Holmes teddy bear, 2002, German Exclusive, white tag 655517, LE 1500, golden blonde, MISSING certificate & box, Excellent; 13.75"/35cm.

**Estimate:** £60-80



**Lot No. 903**

Steiff Margarete Steiff Edition II Veneziano, black tag 420597, Special Club Member Edition of 470/500, - as a Club Member you had to enter a draw; if you won you were given the chance to order and pre-pay for this Bear, with a special box and a book with your name printed inside, with the story behind the bear and how he was made - MISSING box and book, Good Plus to Excellent, 13"/33cm.

**Estimate:** £120-140



**Lot No. 904**

Steiff replica 1907 Teddy Bear, white tag 406010, LE 5000, brown mohair, chest tag, MISSING certificate & box, otherwise Excellent; 27"/70cm.

**Estimate:** £50-70



**Lot No. 905**

Steiff teddy bear group x 4 including: (1) Schoenbrunn Musical Bear, 2003, white tag 661266, LE 1500, yellow tipped mohair, musical mechanism, 16"/33cm, (2) Schampuss the Champagne teddy bear, white tag 995705, LE 1500, 2000, German Exclusive for the Post Museums Shop, cream mohair, 12.5"/32cm, (3) "Teaddy Bear", white tag 652646, green mohair, LE 1500, made exclusively for Taiwan in 1998, MISSING Chinese style cylindrical presentation tub, 11"/28cm, (4) Giengen Set Replica 1906, white tag 0162/00, LE 16000, 1984-87, golden mohair, chest tag golden MISSING miniature baby bear in wooden crib & box, 12.5"/32cm, all MISSING swing label certificate & box, otherwise Excellent; (4).

**Estimate:** £60-80



**Lot No. 906**

Steiff teddy bear trio including: (1) Harrods Musical Extravagance teddy bear, 1997, LE 2000, white tag 653179, mohair, MISSING chest tag, plays Shirley Bassey's "Big Spender", with small hat box, 15"/38cm, (2) Mercedes-Benz teddy bear, white tag 665837, LE 1500, 1998, pale grey mohair, wearing blue ribbon, 13"/33cm, (3) Berner Bear, Swiss exclusive, white tag 659928, LE 1847, 1998, blond mohair, 12"/31cm, all MISSING swing label certificate & box, otherwise Excellent; (3).

**Estimate:** £60-80



**Lot No. 907**

Steiff Tiger Teddy bear set, white tag 652639, LE 1500, 1997 year of the Tiger, mohair, MISSING swing label & box, Excellent, (Tiger) 9"/23cm, (Teddy bear) 14"/36cm.

**Estimate:** £40-60



**Lot No. 908**

Steiff Teddy Bear trio including: (1) Teddy Bear "U. Pitchoun", 2000, white tag 658082, LE 2000, exclusive to Monaco, MISSING book and certificate, missing swing label, 13.75"/25cm; (2) Teddy Bear 1907 replica, white tag 406034, LE 5000, chest tag, blonde mohair, MISSING certificate, 13.25"/34cm; (3) Club Edition 2005 Richard replica teddy, white tag 420467, LE, grey mohair, MISSING certificate, 12"/30cm; Good Plus to Excellent; (3).

**Estimate:** £60-80



**Lot No. 909**

Steiff teddy bear group x 5 including: (1) 125 Years Teddy Bear Celebration, white tag 038976, golden blonde mohair, 12"/30cm, (2) 2009 Club Edition Teddy Bear, white tag 420979, limited to the year 2009, brass mohair, 11.75"/30cm, (3) Paul the Growler, white tag 037221, mohair, celebrating the 100th anniversary (1908-2008) of the first bears to be fitted with a growler, 11"/28cm, (4) Steiff Club golden blonde teddy bear 2008, white tag 420955, LE to year, Steiff Club Member Edition, 12"/30cm, (5) A Million Hugs teddy bear, white tag 038792, white mohair, 1907-2007, 11"/29cm, all MISSING swing labels, otherwise Good Plus to Excellent; (5).

**Estimate:** £60-80



**Lot No. 910**

Steiff Teddy Bear trio including: (1) Club Edition Baby Bear 1946 replica, white tag 420054, blonde mohair, MISSING certificate, 13.75"/35cm; (2) Club Edition Dicky replica 1935 teddy bear, 1996, white tag 420078, LE, brown mohair, MISSING certificate, 12.5"/32cm; (3) Club Edition Dicky replica 1935 teddy bear, 1996, white tag 420078, LE, blonde mohair, MISSING certificate, 12.5"/32cm; Good Plus to Excellent; (3).

**Estimate:** £50-70



**Lot No. 911**

Steiff Teddy Bear Red Brown replica 1905, white tag 404306, LE 6000, chest tag, MISSING certificate, Good Plus to Excellent; 19"/50cm.

**Estimate:** £60-80



**Lot No. 912**

Steiff Teddy bear trio including: (1) Steiff 150 Year Margaret Steiff Anniversary teddy bear, white tag 670152, LE 3999, cream mohair, 15.75"/40cm, (2) Asian Happiness bear, 1996, white tag 659874, LE 3000 for South East Asia, apricot mohair, ceramic medallion, 15.75"/40cm, (3) Steiff Museum Bear 2005, white tag 672262, LE to the year 2005, light grey mohair, ceramic medallion, 12"/30cm, all MISSING swing label certificate, otherwise Good Plus to Excellent; (3).

**Estimate:** £50-70



**Lot No. 913**

Steiff Teddy Bear pair including: (1) Old Gold Teddy bear, white tag 038297, pale golden wavy mohair, shoe button eyes, MISSING certificate, 20.5"/52cm, (2) British Collectors' 2003 bear, white tag 660955, LE 4000, yellow mohair, MISSING certificate, 14"/36cm; Good Plus to Excellent; (2).

**Estimate:** £50-70



**Lot No. 914**

Steiff Teddy Bear pair including: (1) Marianne Meisel Teddy Bear, 2007 Steiff Club Exclusive, white tag 420771, rose coloured mohair, felt flowers to chest and top of head inspired by a watercolour by Marianne Meisel - daughter of Richard Steiff, 15.75"/40cm, (2) Alpine Poppy Teddy Bear, white tag 662089, exclusive to Germany, Austria and Switzerland, 2005, LE 2000, cream mohair, 11"/29cm, both MISSING certificate & box, otherwise Good to Good Plus; (2).

**Estimate:** £60-80



**Lot No. 915**

Steiff Teddy bear trio including: (1) Deutschland Bar 2002, white tag 671135, production limited to the year 2000, complete with chest medallion, 8.5"/22cm, (2) Deutschlandbar 2001 (Barliner), white tag 670961, LE 2000, mohair, swing label certificate, Berlin medallion, musical key wound movement plays "Das ist die Berliner Luft", 12.5"/33cm, (3) Hercule teddy bear 28, Monaco 1995, white tag 999079, LE 3000, mohair, 11"/28cm, all MISSING swing label certificate, otherwise Good Plus to Excellent; (3).

**Estimate:** £50-70



**Lot No. 916**

Steiff teddy bear group x 5 including: (1) Steiff Club Edition Picnic Bear 1997, white tag 420108, limited to year of production, mohair teddy bear holding wicker basket with plate, 12.5"/32cm, (2) Club Edition teddy bear replica 1912, white tag 420160, mohair, chest medallion, 13.75"/35cm, (3) Steiff Franz Club Bear 2004, white tag 420405, limited availability to club members within 2004, mohair, chest medallion, 12.5"/32cm, (4) Club Jubilee Set 2002, white tag 420306, limited edition to year of production, 8.25"/21cm, (5) Steiff Jubilee bear, white tag 671050, 2002, mohair, 10"/25cm, all MISSING swing label certificate, otherwise Good Plus to Excellent; (5).

**Estimate:** £60-80



**Lot No. 917**

Steiff Teddy Bear pair including: (1) British Collectors' 1907 replica, white tag 406065, LE 3000, dark brown mohair, chest tag (creased), MISSING certificate, 23.5"/60cm; (2) Museum Bear 2003, white tag 671456, olive mohair, ceramic medallion, MISSING swing label certificate, 12"/32cm; a little dusty otherwise Good Plus to Excellent; (2).

**Estimate:** £60-80



**Lot No. 918**

Steiff Teddy bear group x 5 including: (1) Club Edition Messe Leipzig 1903 teddy bear, white tag 420351, LE to the year 2003, MISSING wooden crate, 11"/28cm, (2) Margarete Steiff 150 Anniversary mohair teddy bear, white tag 670206, limited to year of production, dark brown mohair, with ceramic medallion, 11"/28cm, (3) Museum Bear 2001, white tag 670701, LE, mohair, 12"/30cm, (4) Gold Museum Bear 1998, white tag 670084, limited to production in 1998, medallion, 11.75"/30cm, (5) Museum bear 2008, white tag 672989, blonde mohair, ceramic chest tag, 12"/31cm, all MISSING swing label certificate, otherwise Good Plus to Excellent; (5).

**Estimate:** £60-80





**Lot No. 919**

Steiff Teddy Bear trio including: (1) British Collectors replica 1911 teddy bear, white tag 406645, LE 3000, off white mohair, chest tag, MISSING certificate, 16"/42cm, (2) British Collectors replica 1906 teddy bear, blonde white tag 406096, LE 3000, mohair, chest tag, MISSING certificate, 13"/33cm; (3) British Collectors Teddy Bear 2002, white tag 660726, LE 4000, blonde mohair, chest tag, MISSING certificate, 14"/36cm; Good Plus to Excellent; (3).

**Estimate:** £60-80



**Lot No. 920**

Steiff Teddy Bear Group including: (1) Louis teddy bear 44, special US Edition 1994, white tag 650789, LE 3500, dark cinnamon mohair, medal to chest, MISSING certificate, 17.25"/44cm; (2) Hamleys William Bear, dark blonde mohair, 2003, white tag 661228, LE 1500, MISSING certificate, 11.75"/30cm; (3) Destiny, white tag 652691, LE 1500, black mohair, MISSING certificate, 10"/26cm; (4) Museum Bear 2004, white tag 671760, pink mohair, ceramic medallion, swing label certificate, 12"/32cm; Good Plus; (4).

**Estimate:** £60-80



**Lot No. 921**

Steiff teddy bear trio including: (1) Steiff British Collectors' 2007 Old Black Bear, white tag 662508, LE 3000, mohair, with chest tag (detached but present), 16"/40cm, (2) Steiff British Collectors Teddy Bear 2006 Old Brown Bear, white tag 662218, LE 3000, with chest tag, 16"/40cm, (3) Steiff British Collectors' 2005 teddy bear, white tag 661969, UK exclusive, golden-apricot mohair, LE 4000, with chest tag, 15.75"/40cm, all MISSING certificates & box, otherwise Good Plus to Excellent; (3).

**Estimate:** £60-80



**Lot No. 922**

Steiff Teddy Bear replica 1908, white tag 406041, LE 7000, mohair, chest tag, MISSING certificate, Good Plus to Excellent, 25.5"/65cm.

**Estimate:** £60-80



**Lot No. 923**

Steiff teddy bear trio including: (1) Steiff British Collectors' replica 1912 Titanic teddy bear, 1989, white tag 406829, black mohair, LE 3000, chest tag, 19"/48cm, (2) Steiff British Collector's Teddy 2000, white tag 654763, LE 4000, mohair, chest tag, 16"/40cm, (3) British Collectors brown mohair tipped teddy bear, white tag 654404 (discolouration), LE 3000 exclusive to the UK, 1995, chest tag, 14"/35cm, all MISSING certificates & box, otherwise Good Plus to Excellent; (3).

**Estimate:** £60-80



**Lot No. 924**

Steiff Teddy Bear Replica 1909, white tag 406058, LE 5000, mohair, chest tag, MISSING certificate, a little dusty otherwise Good Plus; 25.5"/65cm.

**Estimate:** £60-80



**Lot No. 925**

Steiff Victor the Adventurer teddy bear, Swiss Exclusive 2001, white tag 660290, LE 2001, light grey mohair, wearing red headband embroidered with Swiss Coat of Arms, leather cross belt with pouch containing Victorinox Swiss army knife, Excellent Plus, 13.5"/34cm. PLEASE NOTE THIS LOT CAN NOT BE SHIPPED INTERNATIONALLY.

**Estimate:** £30-50



**Lot No. 926**

Steiff teddy bear group x 5 including: (1) Petsy Teddy Bear replica 1928, white tag 407451, LE 4000, mohair, chest tag, 12"/32cm, (2) Dicky 1930 Replica white Teddy Bear, white tag 407574, LE 7000, 1992, chest tag, 13"/33cm, (3) 1948 Blonde Replica Teddy Bear, white tag 408328, LE 5000, 1997, golden artificial silk plush, chest tag, 10"/25cm, (4) Replica 1953 teddy bear, white tag 408489, LE 5000, white mohair teddy bear, chest tag, 10"/25cm, (5) Steiff Musikbar replica 1928, white tag 407482, LE 8000, yellow mohair, integral bellows music box mechanism which plays "You Are My Sunshine", chest tag, 15.75"/40cm, all MISSING certificates & box, otherwise Good Plus to Excellent; (5).

**Estimate:** £60-80



**Lot No. 927**

Steiff Teddy Bear Replica 1912 "Titanic" Bear, white tag 407284, LE 1912, mohair, chest tag (creased), MISSING certificate, a little dusty otherwise Good Plus to Excellent, 27.5"/70cm.

**Estimate:** £80-100



**Lot No. 928**

Steiff replica 1921 teddy bear, white tag 407291, LE 1921, 2004, white mohair bear, chest tag, MISSING certificate, a little dusty otherwise Good Plus, 27.5"/70cm.

**Estimate:** £60-80



**Lot No. 929**

Steiff Teddy Peace replica 1925 teddy bear, white tag 675249, LE 1500, brown with blonde tip mohair teddy bear, chest tag, MISSING certificate & box, otherwise Good Plus to Excellent; 25.5"/65cm.

**Estimate:** £50-70



**Lot No. 930**

Steiff Teddy bear pair including: (1) Steiff caramel mohair teddy bear replica 1951, white tag 408427, LE 5000, wearing blue silk ribbon, chest tag, 19"/50cm, (2) 1953 replica teddy bear, white tag 408519, LE 3000, black mohair, chest tag, 14"/35cm, both MISSING swing label certificate & box, otherwise Good Plus to Excellent; (2).

**Estimate:** £50-70



**Lot No. 931**

Steiff Sebastian Teddy Bear, white tag 681158, LE 1500, off white mohair, chest tag (creased), MISSING certificate, Good Plus to Excellent, 26"/66.5cm.

**Estimate:** £60-80



**Lot No. 932**

Steiff Teddy bear trio including: (1) Steiff Classy red - blond mohair bear, 1996, white tag 659867, LE 3000 for Japan, chest tag, 10.25"/26cm, (2) Steiff Eiffel Tower teddy bear 1998/1999 exclusive for Lafayette Galleries, white tag 658044, LE 1500, 13.5"/34cm, (3) Steiff Andreas teddy bear blonde 40, Kaufhof German Exclusive, 1997, white tag 655302, (ribbon has frayed at the ends), LE 1997, 15.75"/40cm, all MISSING swing label certificate & box, otherwise Good Plus to Excellent; (3).

**Estimate:** £60-80



**Lot No. 933**

Steiff Jackie Bear replica 1953 teddy bear, 1999, white tag 408533, LE 1000, honey mohair, MISSING chest tag and certificate, Good Plus to Excellent; 28"/71cm.

**Estimate:** £80-100



**Lot No. 934**

Steiff teddy bear trio including: (1) Steiff British Collectors 2001 brass mohair teddy bear, white tag 654992, LE 4000, exclusive to the UK, with tilt growler, 17.75"/45cm, (2) Steiff Classic teddy bear, yellow tag 004674, blonde mohair, chest tags, 19"/48cm, (3) George teddy bear, white tag 654749, LE 2000, exclusive for Teddy Bears of Witney, mohair, 12"/30cm, all MISSING swing labels, otherwise Good to Good Plus; (3).

**Estimate:** £60-80



**Lot No. 935**

Steiff Giant Panda, white tag 668302, LE 1500, white and black mohair, MISSING swing label, a little dusty otherwise Good Plus to Excellent, 185"/47.5cm (seated).

**Estimate:** £60-80



**Lot No. 936**

Steiff Trio including: (1) Louis teddy bear, Club Edition 2012, white tag 421235, production limited to year, burgundy alpaca/cotton, swing label, MISSING certificate, 14.5"/37cm; (2) Ralph, white tag 036569, LE 2010, rust mohair, chest tag, MISSING certificate, 9"/22cm; (3) Monty, white tag 035739, LE 1500, aubergine mohair, swing label, 11"/28.5cm; would benefit from cleaning (dusty) otherwise Good Plus; (3).

**Estimate:** £60-80



**Lot No. 937**

Steiff Henderson (Robert) teddy bear, exclusive for Teddy Bears of Witney, 1997, white tag 653780, LE 2000, MISSING certificate, golden mohair, a little dusty otherwise Good Plus to Excellent; ; 20"/51cm.

**Estimate:** £60-80



**Lot No. 938**

Steiff Teddy bear group x 5 including: (1) Teddy Rose Replica 1927, white tag 407192, LE 7000, MISSING chest tag, 19"/48cm, (2) Hamleys Dominic teddy bear, white tag 652844, LE 1500, exclusive to Hamleys, black mohair, 11"/28cm, (3) Steiff ball, white tag 668791, red & yellow mohair, swing label, 6"/15cm, (4) Teddy Bu Replica 1925, brown mohair, white tag 407185, LE 4000, chest tag, 11.75"/30cm, (5) Classic mohair teddy bear, yellow tag 005016, mohair, chest tag, 10"/26cm, all MISSING swing label certificate, otherwise Good Plus to Excellent; (5).

**Estimate:** £60-80



**Lot No. 939**

Steiff Teddy Bear group including: (1) Millennium Teddy Bear, white tag 670374 (tag has discoloured), LE 1999, golden mohair, MISSING certificate, 17"/43cm; (2) "Daddey" Giengen Festival teddy bear, white tag 655685, LE, exclusive for the 7th Steiff Festival in Giengen in 2003, grey curly mohair teddy bear, chest tag, MISSING swing label, 13.75"/35cm; (3) Teddy Bear 1950 edition 2001/2002, white tag 420245, LE 5287, brown mohair, MISSING certificate, within Good box, 14"/35cm; (4) 100 years of Steiff bear, white tag 038884, LE 1902, blonde mohair, MISSING certificate and book, 10"/26cm; Good Plus to Excellent; (4).

**Estimate:** £60-80





**Lot No. 940**

Steiff teddy bear trio including: (1) British Collectors' 2008 bear, white tag 662966, LE 3000, mohair, chest tag, 15"/38cm (2) Steiff British Collectors Bear 2015, white tag 664731, LE 2000, mohair, chest tag, swing label, 14"/36cm, (3) Steiff 28 PB 1904 Replica, white tag 404115, LE 7000, mohair, wooden shoe button eyes, sealing-wax nose (damaged), 15"/38cm, all MISSING swing label certificate & box, otherwise Good; (3).

**Estimate:** £50-70



**Lot No. 941**

Steiff Teddy bear group x 4 including: (1) Steiff Classic teddy bear, yellow tag 005985, chest tag (discoloured), black mohair, 16.5"/42cm, (2) Classic Reproduction 1909, brown mohair, yellow tag 000447, chest tag, 12"/31cm, (3) 1927 Teddy Classic Petsy replica Teddy Bear, yellow tag 000911, yellow mohair, chest tag, 9"/23cm, (4) 1928 Classic Petsy, yellow tag 000980, mohair, chest tag, 15"/38cm, all MISSING swing label certificate and box, otherwise Good Plus to Excellent; (4).

**Estimate:** £50-70



**Lot No. 942**

Steiff Teddy bear trio including: (1) Steiff original teddy bear with Musical wind up box, yellow tag 011214, mohair, chest tag, 14"/36cm, (2) Original mask bear, yellow tag 008016, mohair, chest tag, 14"/36cm, (3) Original teddy bear, yellow tag 010354, mohair, chest tag, 14"/36cm, all MISSING swing label certificates & boxes, otherwise Good to Good Plus; (3).

**Estimate:** £50-70



**Lot No. 943**

Steiff teddy bear group x 4 including: (1) Steiff Classic teddy bear, yellow tag 004445, blonde mohair, chest tag, 17.75"/45cm, (2) Steiff Classic 1909 teddy bear, yellow tag 000393, blonde mohair, with tilt growler, chest tag, 17"/43cm, (3) Steiff Harrods Musical Bear Replica 1909, 1989-90, white tag 0291/26 LE 2000, white mohair (dusty), musical mechanism plays "Brahm's Lullaby", 10.25"/26cm, (4) Steiff The William Shakespeare Bear, white tag 0166/29, golden mohair, 10"/26cm, all MISSING swing label certificate, otherwise Good to Good Plus; (4).

**Estimate:** £60-80



**Lot No. 944**

Steiff Teddy bear group x 4 including: (1) Centenary teddy bear, white tag 670985, LE to year 2002, mohair, certificate, 17"/44cm, (2) Original Teddy Bear 1909 replica, yellow tag 0166/43, blonde mohair, 17"/43cm, (3) Steiff Classic reproduction 1903 Classic Teddy Bear, Mr Cinnamon, caramel mohair, yellow tag 000188, with tilt growler, chest tag, 12"/30cm, (4) Steiff 1955 replica teddy bear with neck mechanism, 1990/91, LE 4000, white tag 408854, two-tone beige and cream mohair, 10"/25cm, all MISSING swing label certificates, Good to Good Plus; (4).

**Estimate:** £50-70



**Lot No. 945**

Steiff "Happy" 1926 teddy bear replica, white tag 407239, LE 5000, brown tipped mohair, MISSING certificate, a little dusty otherwise Good Plus to Excellent, 25.5"/65cm.

**Estimate:** £50-70



**Lot No. 946**

Steiff Teddy Bear trio including: (1) Freundschaftesbar Teddy, white tag 671029, LE 2000 exclusive for Germany (Deutschlandbar 2003), white mohair, 12"/30cm; (2) Museum bear 2009, white tag 673139, white mohair, ceramic medallion, swing label, 10.5"/27cm; (3) Appolonia Margarete, white tag 038129, LE, sparse blonde mohair, MISSING swing label certificate, 11"/28.5cm; Good Plus to Excellent; (3).

**Estimate:** £60-80



**Lot No. 947**

Steiff 1908 replica teddy bear, white tag 403002, LE 1908, mohair, chest tag, MISSING certificate, Excellent, 12.5"/32cm.  
**Estimate:** £50-70



**Lot No. 948**

Steiff Teddy bear group x 5 including: (1) Classic mohair teddy bear, yellow tag 005114, brown mohair, chest tag (creased), 12"/31cm, (2) 1920 Classic dark brown mohair, yellow tag 000829, with chest tag, 10"/25cm, (3) Steiff Classic 1920 replica light blonde mohair, yellow tag 000669, 1996-1999, chest tag, 16.5"/42cm, (4) Steiff Classic teddy bear, silver grey mohair, yellow tag 005268, 15.5"/39cm, (5) Classic teddy bear, yellow tag 005503, chest tag, 10"/26cm, all MISSING swing label certificate, Good to Good Plus; (5).  
**Estimate:** £50-70



**Lot No. 949**

Steiff Teddy Bear trio including: (1) 1906 replica teddy bear, yellow tag 000256, blonde mohair, chest tag, 20"/51cm; (2) 100th Anniversary Papa Bear 1903 replica, white tag 0153/43, blonde mohair, (1st limited edition Steiff produced for the worldwide market), 17"/43cm; (3) 19851 replica teddy bear, yellow tag 000898, blonde mohair, chest tag, 12"/31cm; Good Plus to Excellent; (3).  
**Estimate:** £50-70



**Lot No. 950**

Steiff Teddy bear group x 4 including: (1) Classic teddy bear, yellow tag 004636, blonde mohair, chest tag, 15"/38cm, (2) Classic 1909 replica, yellow tag 000423, brown mohair, chest tag, 9.5"/24cm, (3) 1905 Classic Richard Steiff teddy bear, yellow tag 001604, mohair, chest tag, 9.75"/25cm, (4) Classic teddy bear, yellow tag 004650, blond mohair, chest tag, 10"/26cm, all MISSING swing label certificate, Good to Good Plus; (4).  
**Estimate:** £40-60



**Lot No. 951**

Steiff Teddy Bear trio including: (1) 1909 replica bear, yellow tag 000515, chest tag, golden mohair, 16"/41cm; (2) Molly Bear, yellow tag 021763, brown plush, chest tag, 28"/71.5cm; (3) Molly bear, yellow tag 019456; blue plush, chest tag, 18"/46cm; Good Plus to Excellent; (3).  
**Estimate:** £40-60



**Lot No. 952**

Steiff teddy bear pair including: (1) Club Edition teddy bear, 1908 Blue 35 replica, white tag 420047, mohair, certificate, within Fair Plus to Good box, 14"/35cm; (2) Club Edition Harlequin Replica 1925 Teddy Bear, white tag 420214, mohair, certificate, 14"/35cm; (3) Grand Cru Bear, white tag 660009, vintage Bordeaux Red 34, French exclusive, LE 1500, mohair, MISSING certificate, 13.75"/34cm; Good Plus to Excellent; (3).  
**Estimate:** £60-80



**Lot No. 953**

Steiff pair teddy bear pair including: (1) Shou Bear, white 675799, LE 1500, pink mohair, 12"/31cm; (2) Fu-Bear, white tag 675782, LE 1500, red mohair, 12"/31cm; Excellent; (2).  
**Estimate:** £50-70



**Lot No. 954**

Steiff teddy bear trio including: (1) Sommer 2007 teddy bear, white tag 656507, blonde mohair, fully jointed, embroidered rose details, swing label, 10"/26cm, (2) Almrausch teddy bear, German, Austrian and Swiss exclusive 2002, white tag 660597, LE 2000, grey mohair, (missing heart charm), 14"/36cm, (3) Silberdistel teddy bear, German, Austrian and Swiss exclusive, white tag 660849, 2003, LE 2000, caramel mohair, 13.25"/34cm, all MISSING certificate & swing label, otherwise Good to Good Plus; (3).  
**Estimate:** £60-80



**Lot No. 955**

Steiff Teddy Bear pair including: (1) British Collector's 1998, white tag 659973, LE 3000 exclusive to the UK, red mohair, MISSING certificate, 15"/40cm, (2) Galleries Lafayette Himbeer Bear, 1995, white tag 657931, MISSING certificate, 16.5"/42cm; Excellent; (2).

**Estimate:** £60-80



**Lot No. 956**

Steiff pair of teddy bears: (1) Teddy G, white tag 670282, LE 3362, limited in production to the year 1999, white mohair, 13"/33cm; (2) Teddy B, white tag 670275, LE 3159, limited in production to the year 1998, brown mohair, 13"/33cm, all MISSING swing label certificate, otherwise Good Plus to Excellent; (2).

**Estimate:** £40-60



**Lot No. 957**

Steiff Paddington Bear, white tag 354250, LE 5000, mohair, (hat has lifted from the front), MISSING swing label certificate & box, otherwise Excellent, 12.5"/32cm.

**Estimate:** £60-80



**Lot No. 958**

Steiff trio of teddy bears: (1) Nora, blonde mohair bear is from the special set (Pat and Nora) for Sue Pearson, 2002, white tag 660771, missing umbrella & black bear, 12.5"/32cm, (2) Betsy Ross North American exclusive teddy bear, white tag 666940, LE 1776, inspired by an original Steiff owned by Dee Hockenberry dating back to 1910, blonde mohair Bear, featuring a gold tone cameo in antique style, made with 24 carat overlay picturing Betsy Ross holding the first American Flag, 14"/36cm, (3) Bagi beige mohair teddy bear, white tag 420559, club edition 2006, based on a Lady Bear sold at Christie's in 2003, wearing 2-piece felt outfit in light blue and cornflower blue, 12.5"/33cm, all MISSING swing label certificate, Good Plus to Excellent; (3).

**Estimate:** £60-80



**Lot No. 959**

Steiff Polar Cub, white tag 668326, LE 1000, off white alpaca, MISSING certificate, Excellent, 13"/33.5cm (seated).

**Estimate:** £50-70



**Lot No. 960**

Steiff teddy bear pair including: (1) Replica 1907 teddy bear, white tag 400506, LE 1907, blonde mohair, MISSING certificate, chest tag, 17.5"/44cm; (2) Margarete's teddy bear replica 1909, white tag 400520, LE 1909, light blonde mohair, chest tag, MISSING certificate, 18"/46cm; Excellent; (2).

**Estimate:** £60-80



**Lot No. 961**

Steiff teddy bear trio including: (1) Asian Santa Teddy Bear, Asian exclusive, white tag 675812, LE 1000, mohair, wearing bottle green velvet robe trimmed with white plush, 13"/34cm, (2) Christmas Caroller, white tag 037801, blonde mohair teddy bear wearing top hat and scarf carrying a sheet music (creased), MISSING lantern, 10.25"/26cm (12"/30cm to top of hat), (3) Teddy bear with nutcracker, white tag 037955, LE 3000, brown mohair, holding a wooden nutcracker, 11"/28cm, all MISSING swing labels & certificate, Good to Good Plus; (3).

**Estimate:** £60-80





**Lot No. 962**

Steiff teddy bear pair including: (1) Classic 1903 Mr Cinnamon teddy bear replica, yellow tag 000201, caramel mohair, chest tag, 21.5"/55cm; (2) Purzelbar Somersault teddy bear, white tag 037436, LE 2006, mohair, chest tag, MISSING certificate, 12"/30cm; Excellent; (2).

**Estimate:** £60-80



**Lot No. 963**

Steiff Alexander The Trademark Bear, white tag 681325, LE 1950, grey alpaca, MISSING certificate, Excellent, 16"/41cm.

**Estimate:** £50-70



**Lot No. 964**

Steiff teddy bear pair including: (1) Harrods Victorian Musical Bear, white tag 650680 (yellowed), LE 2000, 1993, green/grey mohair, with clockwork musical mechanism playing Rossini's "The Thieving Magpie", MISSING certificate, some discolouration to rear of waistcoat, 15"/38cm; (2) Grizzly Ted teddy bear, 2004, white tag 661402, LE 2000, produced exclusively for UK and Ireland, caramel mohair with frosted tip, MISSING certificate, 15.75"/40cm; Good Plus to Excellent; (2).

**Estimate:** £50-70



**Lot No. 965**

Steiff Teddy Bear Total 100 Years of Teddy Bears, 2002, white tag 995132, LE 1500, musical movement plays Happy Birthday to You, carrying a bunch of roses, pink mohair, MISSING swing label certificate & box, otherwise Good Plus to Excellent; 16.5"/42cm.

**Estimate:** £50-70



**Lot No. 966**

Steiff teddy bear pair including: (1) Appolonia Margarete teddy bear, white tag 038112, LE 5000, blonde sparse mohair, MISSING certificate, 17.5"/45cm; (2) British Collectors' teddy bear 2013, white tag 664434, LE 2000, 2013, grey beige alpaca/cotton, chest tag, MISSING certificate, 14"/36cm; Excellent; (2).

**Estimate:** £60-80



**Lot No. 967**

Steiff Teddy Bear pair including: (1) Compass Rose Teddy Bear, USA exclusive, white tag 650819, 1995, LE 3500, rosewood colour mohair, MISSING swing label certificate, 17.25"/44cm, (2) Club Edition 2013 Teddy Bear Louise, white tag 421259, pale pink alpaca, with swing label certificate, 13"/33cm, both Excellent; (2).

**Estimate:** £60-80



**Lot No. 968**

Steiff pair of replica Teddy Clowns, including: (1) Steiff Replica Teddy Clown 1926, white tag 407260, mohair, chest tag, LE 5000, 13"/33cm; and (2) Club Teddy Clown replica 1928, white tag 420023, chest medallion, 11"/28cm, both MISSING certificate & box, otherwise Good Plus to Excellent; (2).

**Estimate:** £50-70



**Lot No. 969**

Steiff Baby Alfonzo teddy bear, white tag 653773, LE 5000 pieces exclusive to Teddy Bears of Witney, red mohair, MISSING certificate and box, Excellent, 9.5"/24cm.

**Estimate:** £40-60



**Lot No. 970**

Steff teddy bear pair including: (1) Galleries Lafayette "Bonjour Year 2000" bear, 1999, white tag 658075, LE 1500, blue mohair, 13.25"/34cm, (2) Paul Bocuse, white tag 661167, LE 2003, named after the famous French chef, wearing his famous medal of the Bocuse d'Or 2003, blond mohair, (mark to the side of jacket - see photo), 13.75"/35cm, both MISSING swing label certificate, otherwise Good to Good Plus; (2).

**Estimate:** £60-80



**Lot No. 971**

Steff Teddy Bear trio including: (1) Pierrot, white tag 037511, LE 2006, black and white alpaca, MISSING certificate, chest tag, 10"/26cm; (2) Schwarzbar, UK Exclusive, white tag 660627, LE 1500, black mohair, MISSING certificate, 14"/36cm; (3) Steiff 1908 Replica teddy bear, white tag 408564, LE 3000, black mohair, chest tag, MISSING certificate, 13.75"/35cm; Good Plus to Excellent; (3).

**Estimate:** £60-80



**Lot No. 972**

Steff Teddy Bear trio including: (1) Father Rhein Deutschland Bear 2002, white tag 671197, LE 2000, blue tipped white mohair, musical movement, chest medallion, MISSING swing label, 11"/28cm; (2) Giengen Rally bear 2004, yellow tag 994043, lilac mohair, swing label 9.5"/24.5cm; (3) Teddy Rose replica 1925, white tag 407154, LE 8000, rose mohair, MISSING certificate, 10"/25cm; Good Plus to Excellent; (3).

**Estimate:** £50-70



**Lot No. 973**

Steff Penny the Federation Bear, Australian Exclusive, reddish brown mohair, 2001, LE 2000, white tag 675546, MISSING certificate and box, Good to Good Plus; 13.75"/35cm.

**Estimate:** £50-70



**Lot No. 974**

Steff teddy bear trio including: (1) Otto Teddy Bear, replica 1912, white tag 406744, LE 5000, golden curly mohair teddy bear, 16"/40cm, (2) Passport Teddy Bear, USA exclusive, white tag 665318, 1997, LE 3500, blonde bear, MISSING accessories, 11.75"/30cm, (3) Passport Bear, 1985-1988, yellow tag 0245/40, blonde mohair, passport around neck, swing label, chest tag (creased), 15.75"/40cm, all MISSING swing label certificate, otherwise Good to Good Plus; (3).

**Estimate:** £50-70



**Lot No. 975**

Steff Walt Disney Convention The Sea Bear, grey/blue mohair, 1998, white tag 651380, LE 2000, MISSING swing label certificate, Excellent, 11"/28cm.

**Estimate:** £60-80



**Lot No. 976**

Steff Teddy Bear trio including: (1) British Collectors "Lilac" teddy bear, white tag 660047, lilac mohair, LE 3000 exclusive to UK in 1999, MISSING chest tag and certificate, 14"/36cm; (2) Teddy Bear replica 1909, white tag 406508, LE 7000, navy mohair, chest tag, MISSING certificate, 13.75"/35cm; (3) Belfry Bear, white tag 661808, LE 1500 produced for the UK and Ireland, navy mohair, MISSING Belfry Golf Ball in drawstring bag, MISSING certificate, 8.5"/23cm; Good Plus to Excellent; (3).

**Estimate:** £60-80



**Lot No. 977**

Steff Teddy Bear pair including: (1) Bella teddy bear, exclusive to The UK and Ireland, 2009, white tag 663376, LE 2000, off-white mohair, MISSING certificate, 15"/38cm; (2) Teddy Bear Rose, white tag 655845, LE 3000, rose mohair, Giengen Festival Exclusive 2005, MISSING certificate, chest tag, 17.25"/44cm; Good Plus to Excellent; (2).

**Estimate:** £60-80



**Lot No. 978**

Steiff animal pair including: (1) Panda Bear, UK and Ireland Exclusive 2003, white tag 661013, LE 2000, mohair, 15.5"/40cm, (2) Koala Ted, white tag 661792, LE 2000, UK and Ireland Exclusive, alpaca, 16"/40cm, both MISSING certificate & box, Good Plus to Excellent; (2).  
**Estimate:** £50-70



**Lot No. 979**

Steiff teddy bear pair including: (1) Chestnut, white tag 421310, LE 2014, green mohair, swing label, 13"/33cm; (2) Club Edition School Starter Bear 1998, white tag 420139, light mohair, within Fair Plus to Good box, MISSING paper cone, 12"/30cm; a little dusty otherwise Good Plus to Excellent; (2).  
**Estimate:** £60-80



**Lot No. 980**

Steiff Teddy Bear pair including: (1) British Collectors Bear 2014, white tag 664380, LE 2000, light brown mohair, chest tag, swing label, MISSING certificate, 14"/36cm; (2) Barle PB 1905 replica, white tag 404122, LE 3000, white mohair, MISSING certificate, 12.5"/32cm; (3) Classic Teddy Bear, white tag 038945, blonde mohair, chest tag, 11"/28.5cm; Good Plus to Excellent; (3).  
**Estimate:** £60-80



**Lot No. 981**

Steiff Tilly Teddy Bear & baby Koala Australian Exclusive, white tag 676048, LE 1500, Australian Koala Foundation, golden mohair, MISSING swing label certificate & box, otherwise Excellent; 12"/31cm.  
**Estimate:** £50-70



**Lot No. 982**

Steiff Teddy Bear trio including: (1) British Collectors' Replica 1908 teddy bear, white tag 406072 (yellowed), LE 3000, exclusive to the UK, dark golden mohair, 1994, chest tag, MISSING certificate, 16"/40cm; (2) Teddy Bear 1911 replica, Club edition 2011, white tag 421174, LE 3000, sand mohair, chest tag, MISSING certificate, 12.5"/32cm; (3) Club bear 2008, white label 420948, mohair, chest tag, 8.5"/22cm; Good Plus to Excellent; (3).  
**Estimate:** £60-80



**Lot No. 983**

Steiff teddy bear pair including: (1) Schneeglochen / Snowdrop teddy bear, white tag 661563, exclusive for Germany, Austria and Switzerland, LE 2000, 12"/30cm, (2) Steiff The Gardening Bear, white tag 654824 LE 4000, blonde mohair, 8.25"/21cm, both MISSING certificate, swing label & box, otherwise Good to Good Plus; (2).  
**Estimate:** £40-60



**Lot No. 984**

Steiff French Musical Teddy Bear pair including: (1) "La Vie en Rose" musical teddy bear, French exclusive 1902, white tag 660436, LE 1500, blonde mohair, key wound musical mechanism, metal France 2002 chest tag, 10"/26cm, (2) Steiff Douce France French Exclusive 2003, white tag 660962, LE 1500, blonde mohair, clockwork musical movement plays "Douce France", with metal chest tag, 12.5"/31cm, both MISSING swing label certificate & carry bag, otherwise Good to Good Plus; (2).  
**Estimate:** £50-70



**Lot No. 985**

Steiff teddy bear pair including: (1) Steiff Club Edition Century Bear 2000, white tag 420221, LE to the year 2000, red blonde mohair teddy bear wearing grey felt waistcoat embroidered in blue "Margarete Steiff 1880" to back, 13"/33cm; (2) Crystal teddy bear, white tag 660948, LE 1500, made exclusively for Austria, light beige mohair, celebrating 100 years of the Steiff teddy bear, 12.5"/32cm, both MISSING swing label & certificate, otherwise Good Plus to Excellent; (2).  
**Estimate:** £50-70





**Lot No. 986**

Steiff teddy bear trio including: (1) Sapphire teddy bear, white tag 036934, LE 2000, 2011, Swarovski Xilion crystal button to ear, deep blue silk (56% pure silk 44% cotton) plush, paw pads encrusted with Swarovski elements and wearing a Swarovski Elements choker, 10"/25cm, (2) Steiff "Roby" Oberhausen Teddy, white tag 994753, LE of 1500 pieces for Germany, black mohair teddy bear wearing blue silk cape with Forever Young - All Over the World printed on the back, 8.5"/22cm, (3) Steiff blue teddy bear, yellow tag 994210 (MISSING yellow fabric tag), chest tag, blue mohair, 15"/38cm, all MISSING swing label certificate & box, otherwise Excellent; (3).

**Estimate:** £60-80



**Lot No. 987**

Steiff Classic Pooh, Winnie the Pooh, large golden mohair teddy bear, edition released for North America and UK, white tag 680298, LE 3500, MISSING swing label certificate, Good Plus to Excellent, 20"/50cm.

**Estimate:** £80-100



**Lot No. 988**

Steiff The Titanic Commemorative Bear, white tag 664151, LE 1912, 2012, black mohair, chest tag, swing label, MISSING certificate, Excellent, 14"/36cm.

**Estimate:** £50-70



**Lot No. 989**

Steiff Teddy Bear trio including: (1) Steiff's Watch teddy, white tag 606304, grey mohair, Steiff Teddy Watch to Wrist, chest tag, 15.5"/40cm; (2) Club Edition Teddy Baby Blue 1929 replica, white tag 420016, LE, light grey mohair, ceramic medallion, 11"/28cm; (3) Schnapp-Dicky Teddy replica 1936, white tag 408243, LE 5000, blonde mohair, with neck joint and snap joint mechanisms, chest tag, MISSING certificate, 12.5"/32cm; Good Plus to Excellent; (3).

**Estimate:** £60-80



**Lot No. 990**

Steiff Teddy Bear Clown pair including: (1) Teddy Clown 1926 replica, white tag 404214, LE 3000, mohair, felt hat (indent to top), chest tag, 12.5"/32cm, (2) Amelia Teddy Rose, white tag 999765, LE 1000, pink mohair, 1993, chest tag, 13.75"/35cm, both MISSING certificate & box, otherwise Good to Good Plus; (2).

**Estimate:** £50-70



**Lot No. 991**

Steiff Galeries Lafayette Teddy bear pair including: (1) 100th Anniversary "France" blue mohair bear, white tag 657948, 1996, LE 1500, 15"/38cm, (2) Tricolore Bear, white tag 657986, LE 1500, exclusive to The French Store Galeries Lafayette, cream mohair, embroidered with Galeries Lafayette to foot, 15.75"/40cm, both MISSING swing label certificate and box, otherwise Good Plus to Excellent; (2).

**Estimate:** £60-80



**Lot No. 992**

Steiff Teddy Bears pair including: (1) Baerle PAB 1904 Replica teddy bear, white tag 404153, golden mohair, 2004, limited to year of production, chest tag, MISSING certificate, 24"/61cm; (2) Paul the Growling Bear Replica 1908, white tag 400513, LE 1908, 2008, blonde mohair, mark to right pad, this is a replica of the first ever teddy bear to have a growl, chest tag, MISSING certificate, 18"/46cm; Good Plus; (2).

**Estimate:** £60-80



**Lot No. 993**

Steiff Teddy bear trio including: (1) Holland teddy bear orange, white tag 650857, LE of 1500, exclusive to the Netherlands, orange mohair teddy wearing rust ribbon, chest tag, 15.75"/40cm, (2) Windmill Bear, 2001, Netherlands exclusive, white tag 660269, LE 1500, white mohair with blue tip, MISSING chest medallion, musical key wound movement, 13"/33cm, (3) "Sandey" Giengen Festival teddy bear, white tag 655579, LE of 3000, exclusive for the 5th Steiff Festival in Giengen in 2001, grey/blue curly mohair, wearing grey silk ribbon, chest tag, swing label certificate, 12"/30cm, all MISSING swing label certificate & box, otherwise Good Plus to Excellent; (3).

**Estimate:** £60-80



**Lot No. 994**

Steiff trio of Scottish Teddy Bears: (1) Steiff The First Scottish Bear, white tag 654732, dark blonde mohair bear, wearing green velvet and Scottish Parliament tartan Tam O'Shanter with matching scarf, LE 3000, exclusive to Great Britain, with certificate, 11.75"/30cm; (2) Steiff Second Scottish Bear, white tag 654855, LE 3000, exclusive to UK and Ireland, white wavy mohair, wearing burgundy and tartan Tam O'Shanter and hat pin, with matching dickey bow, certificate, 12.5"/32cm, (3) Gallery Bear 2006, white tag 672347, LE 1500, mohair, tartan scarf & pads, chest tag, 12"/30cm, all MISSING swing label certificate & box, otherwise Excellent; (3).

**Estimate:** £60-80



**Lot No. 995**

Steiff British Collectors' blonde 1907 replica teddy bear, white tag 406102 (0174/61), blonde mohair, LE 2000, MISSING chest tag and certificate, Excellent, 24"/61cm.

**Estimate:** £60-80



**Lot No. 996**

Steiff teddy bear pair including: (1) Diamond teddy bear, white tag 035715, LE 2000, 2012, Swarovski Xilion crystal button to ear, white silk (56% pure silk 44% cotton) plush, paw pads encrusted with Swarovski elements and wearing a simulated diamond Swarovski crystal pendant, swing label, 10"/25cm, (2) Gustav Klimt Teddy Bear, Austrian exclusive, 2001, white tag 660306, LE 1500, golden mohair, complete with medallion, MISSING swing label certificate, 14"/36cm, both MISSING box, otherwise Excellent; (2).

**Estimate:** £60-80



**Lot No. 997**

Steiff Teddy Bear pair including: (1) PGB 35 Replica 1904, white tag 403026, LE 1904, blonde mohair, chest tag, MISSING certificate, 19"/48cm; (2) Original Teddy Bear, white tag 0156/42, light brown mohair, chest tag, MISSING certificate, 15"/38.5cm; would benefit from cleaning (dusty) otherwise Good Plus; (2).

**Estimate:** £60-80



**Lot No. 998**

Steiff Teddy Bear trio including: (1) Feiler teddy bear, white tag 675959, LE of 1500, exclusive for Japan, silver / grey mohair, chest tag, 2003, 11"/28cm, (2) PB28 Japan Exhibition Bear 2002, exclusive for Japan, white tag 675553, mohair, LE 2002, 13"/33cm, (3) Christopher blonde 33, exclusive for North America, 4th in series of Cherished Teddies, white tag 666681, LE of 2000, golden mohair, 13"/33cm, all MISSING swing labels & box, Good Plus to Excellent; (3).

**Estimate:** £60-80



**Lot No. 999**

Steiff Teddy Bear trio including: (1) JC Penney 100th Anniversary 1902-2002 teddy bear, North America exclusive, white tag 666346, LE by April 2002, blonde sparse mohair (dusty), 14.5"/37cm, (2) The Toy Store Teddy Bear Anno, 1999, white tag 651908, LE 1500, blonde mohair, medallion, 12.5"/32cm, (3) Hamleys Chester apricot mohair teddy bear, 1996, white tag 652820, LE 2000, 12.5"/32cm, all MISSING swing labels & box, Good to Good Plus; (3).

**Estimate:** £50-70



**Lot No. 1000**

Steiff Musical Teddy Bear pair including: (1) Franz Schubert musical teddy bear, white tag 661051, LE 1500, mohair, key wound music box plays The Trout (one of Schubert's famous compositions), 13.75"/35cm, (2) Steiff The English Musical Teddy Bear, white tag 660979, LE 4000, Exclusive to the UK & Ireland, mohair, plays Edward Elgar's "Pomp & Circumstance", 12"/30cm, both MISSING swing labels certificate & box, otherwise Good to Good Plus; (2).

**Estimate:** £60-80



**Lot No. 1001**

Steiff teddy bear pair including: (1) Edelweiss teddy bear, white tag 660139, LE 1500, German, Austrian and Swiss exclusive, green mohair, MISSING certificate, 15"/38cm; (2) Classic Teddybar 1920 replica, yellow tag 000751, mohair, 16.5"/42cm; Good Plus to Excellent; (2).

**Estimate:** £60-80



**Lot No. 1002**

Steiff Teddy Bear trio including: (1) Original Bear, white tag 0156/32, cinnamon mohair, chest tag, 12"/31cm; (2) Original Bear, white tag 0156/26, cinnamon mohair, chest tag, 9"/23.5cm; (3) Original Bear, white tag 0156/18, cinnamon mohair, chest tag, 7"/18.5cm; leatherette pads are beginning to crack, would benefit from cleaning (dusty) otherwise Good to Good Plus; (2).

**Estimate:** £40-60



**Lot No. 1003**

Steiff Musical Honey bear pair including: (1) California Musical Honey bear, USA exclusive, white tag 0293/32, LE 1000, chest tag (edgewear), plays "Picnic Time for Teddy Bears", 12.5"/32cm, (2) Music Teddy replica 1951, white tag 408458, LE 7000, mohair, red felt disc to chest with bellows music box mechanism which plays "Fox, you have Stolen the Goose", chest tag, 13.75"/35cm, both MISSING swing labels, otherwise Excellent; (2).

**Estimate:** £50-70



**Lot No. 1004**

Steiff teddy bear Trio including: (1) Harrods Edward The Attic Teddy Bear, white tag 660313, LE 1500, blonde, MISSING certificate, 12"/31cm; (2) British Collectors' teddy bear 2012, white tag 664205, LE 2000, mohair, chest tag, MISSING certificate, 14"/36cm; (3) Edward teddy bear, white tag 661891, LE 1500, mohair, MISSING chest tag and certificate, 13"/33cm; Good Plus to Excellent; (3).

**Estimate:** £60-80



**Lot No. 1005**

Steiff Teddy Bear set of Earth, Wind, Fire and Water, (Erde, Luft, Feuer und Wasser), German Exclusive, 2001, LE 2000; (1) Earth (Erde), white tag 670749, dark brown mohair, (2) Wind (Luft), white tag 670718, white mohair; (3) Fire (Feuer), white tag, red tip mohair; (4) Water (Wasser), white tag 670725, blue mohair, all come with chest tags, MISSING swing label certificate, otherwise Excellent, 12.5"/32cm; (4).

**Estimate:** £80-120



**Lot No. 1006**

Steiff Baby Hot Water Bottle Bear, white tag 667299, 2004, LE 3000, North American exclusive, brass mohair, MISSING swing label and certificate, Good Plus to Excellent, 14"/36cm.

**Estimate:** £50-70



**Lot No. 1007**

Steiff Teddy Bear trio including: (1) Muzzle bear replica 1908, white tag 406126 (0174-35), LE 6000, white mohair, MISSING certificate, 13.75"/35cm; (2) 28 PB replica teddy bear, white tag 420290, LE to year 2002, white mohair, with ceramic medallion, MISSING certificate, 14.5"/37cm; (3) Oskar, white tag 669705, North American Exclusive 2007, white mohair, MISSING certificate, 13"/33cm; Good Plus to Excellent; (3).

**Estimate:** £50-70





**Lot No. 1008**

Steiff Whitey and Rosey Teddy Babies pair of Giengen Festival exclusives including: (1) Whitey white tag 655340, LE of 3000, 11"/28cm; (3) Rosey, white tag 655487, LE of 3000, 11.5"/29cm; all mohair, with chest tags, but all MISSING swing label certificates, Excellent; (2).

**Estimate:** £60-80



**Lot No. 1009**

Steiff Miniature teddy bear pair including: Little Blackey & Little Whitey Teddy Babies, Giengen Festival 2000, white tag 655500, LE 3000, complete with tags, MISSING certificates/book, otherwise Excellent Plus, 6"/15cm & 5.5"/14cm.

**Estimate:** £50-70



**Lot No. 1010**

Steiff Teddy bear trio including: (1) Archie The Attic teddy bear, white tag 660832, LE 1500, 2002, 2nd in the Attic Bear series, caramel mohair, holding felt ball, 13"/33cm, (2) Exhibition Bear 2004, UK and Ireland exclusive, white tag 661273, LE 1500, mohair, 8.25"/21cm, (3) Spielwaren Wolff Teddy Bear and Wolf hand puppet Set, 2003, German Exclusive, white tag 655647, LE 1500, grey and white hand puppet wolf, chest tag, 12.5"/32cm, wolf 6.25"/16cm, all MISSING swing label certificate & boxes, otherwise Good Plus to Excellent; (3).

**Estimate:** £60-80



**Lot No. 1011**

Steiff 1908 replica teddy bear pair including: (1) 1908 replica, white tag 406751, LE 3000, mohair, chest tag, MISSING certificate, 13.75"/35cm; (2) 1908 replica, white tag 408557, LE 3000, mohair, chest tag, MISSING certificate, 13.75"/35cm; Excellent; (2).

**Estimate:** £60-80



**Lot No. 1012**

Steiff 1908 teddy bear replica, green mohair, 2005, LE 3000, white tag 408540, chest tag (some marks to tag), MISSING certificate, Good Plus to Excellent, 14"/35cm.

**Estimate:** £60-80



**Lot No. 1013**

Steiff Teddy Bear pair including: (1) dark blue alpaca teddy bear, white tag 038280, limited in edition to the year 2007, chest tag, MISSING certificate, 12"/30cm; (2) Black alpaca teddy bear, white tag 038150, LE of 3000, MISSING certificate, 12.5"/32cm; would benefit from cleaning (dusty) otherwise Good Plus to Excellent; (2).

**Estimate:** £50-70



**Lot No. 1014**

Steiff Wistful Happy teddy bear replica 1926, white tag 403118, LE 1000, 2013, blonde mohair, chest tag, swing label, MISSING certificate, Excellent, 18"/46cm.

**Estimate:** £60-80



**Lot No. 1015**

Steiff Teddy Bear group including: (1) Classic Teddy Bear, white tag 038938, LE to production year 2004, brown mohair, chest tag, MISSING swing label certificate, 10"/25cm; (2) Classic Teddy Bear, white tag 038860, blonde sparse mohair, chest tag, MISSING certificate and book, 10"/26cm; (3) Classic Teddy Bear, yellow tag 030475, white tipped brown mohair, chest tag, MISSING swing label, 10"/26cm; (4) Classic Teddy Bear, yellow tag 005138, blonde mohair, chest tag, MISSING swing label, 13"/33.5cm; Good Plus to Excellent; (4).

**Estimate:** £60-80



**Lot No. 1016**

Steiff Harmony Teddy Bear Tipped Brown 35 exclusive for Hong Kong 1997, white tag 652615, LE 1997, MISSING certificate, some scuffs to nose otherwise Good Plus to Excellent, 14"/35cm.

**Estimate:** £50-70



**Lot No. 1017**

Steiff One in a Million teddy bear from 1907 replica, white tag 666933, LE 1907, North American Exclusive, cinnamon mohair, centre seam, inspired by an original owned by Dee Hockenberry, MISSING certificate and draw string bag, a little dusty otherwise Good Plus to Excellent, 24"/60cm.

NB: 1907 was a record year for the production of Steiff bears, totalling over one million.

**Estimate:** £60-80



**Lot No. 1018**

Steiff Teddy Bear trio including: (1) Cherished Teddies Chelsea, by Enesco, North American exclusive, white tag 665912, LE 5000, blonde mohair, based upon the original Cherished Teddies classic figurine titled "Good Friends are a Blessing", 13"/33cm; (2) Hello 2000 Goodbye 1999 Teddy Bear set, white tag 670367, two mohair teddy bears, MISSING display box, 8.75"/22cm, both MISSING swing label certificate, otherwise Excellent; (3).

**Estimate:** £50-70



**Lot No. 1019**

Steiff Teddy Bear pair including: (1) Schwarzbar replica 1907 teddy bear, white tag 0173/40 (406003), LE 4000, black mohair, chest tag, MISSING certificate, 16"/40cm; (2) Titanic Teddy Bear replica 1912, white tag 406805, LE 7000, black mohair, chest tag (chest), MISSING certificate, 15.75"/40cm; Good Plus to Excellent; (2).

**Estimate:** £60-80



**Lot No. 1020**

Steiff Teddy Bear trio including: (1) Irish Teddy Bear, UK and Ireland Exclusive, white tag 660702, LE 2000, brown mohair, MISSING certificate, 14"/35cm; (2) Hamleys Jeremy, white tag 652868, LE 1500, brown mohair, MISSING certificate, 11"/28cm; (3) British Collectors 2009 teddy bear, white tag 663246, LE 3000, brown mohair, wearing engraved Steiff name plate on dark green leather collar, chest tag, MISSING certificate, 15"/38cm; Good Plus to Excellent; (3).

**Estimate:** £60-80



**Lot No. 1021**

Steiff British Collectors 2016 teddy bear, white tag 664953, LE 2000, yellow mohair with lime green ribbon, swing label, chest tag, Excellent; 14"/36cm.

**Estimate:** £50-70



**Lot No. 1022**

Steiff Teddy Bear trio including: (1) Hamleys Richard Steiff 100 Years 1902-2002 celebration teddy bear, white tag 660825, LE 1500, yellow mohair, MISSING certificate, 12.5"/32cm; (2) replica 1921, 1996, white tag 407123, LE 4000, off white mohair, MISSING certificate, chest tag, 15.5"/39cm; (3) 1902 Replica, white tag 0150/32, grey mohair, MISSING certificate, 12"/31cm; Good Plus to Excellent; (3).  
**Estimate:** £60-80



**Lot No. 1023**

Steiff Teddy Bear pair including: (1) Harley-Davidson 100th Anniversary Bear, white tag 666476, LE 5000, golden mohair, (hat is loose), 16"/46cm, (2) Steiff BMW, white tag 995163, LE 2002, cream mohair, 12"/31cm, both MISSING certificate & box, otherwise Good to Good Plus; (2).  
**Estimate:** £60-80



**Lot No. 1024**

Steiff Festival Eroffnungsbar teddy bear trio including: (1) Steiff Festival Eroffnungsbar (celebrating Steiff's 125 Anniversary) teddy bear, white tag 672248, from 23-26 June 2005, LE 4000, yellow mohair with red tip, ceramic chest tag, 9.5"/24cm, (2) Steiff Museumsbar 2007, white tag 672651, LE 2007 limited to the year 2007, coffee mohair, with ceramic chest tag, 10"/25cm, (3) Steiff Museum bear, white tag 672453, LE of 2006, black mohair, with ceramic chest tag, 8"/20cm, all MISSING swing label certificate, Excellent; (3).  
**Estimate:** £60-80



**Lot No. 1025**

Steiff Teddy Bear Trio including: (1) Side to Side teddy bear, white tag 038242, LE 5000, golden wavy mohair, contains realistic moveable head mechanism enabling bear's head to rock from side to side, chest tag, MISSING certificate, 14"/36cm; (2) Raffles Teddy Bear, white tag 652578, LE 1847, exclusive to Singapore, rust wavy mohair teddy bear wearing printed silk orange Raffles bear neck-tie, MISSING certificate, 17"/43cm; Good Plus to Excellent; (2).  
**Estimate:** £60-80



**Lot No. 1026**

Steiff Teddy bear pink group x 4 including: (1) Steiff Club Edition Millennium Bear 1999, white tag 420184, pink and blond mohair, 12"/32cm, (2) British Collector's Teddy Rose, white tag 654480, LE 3000, pink mohair, 1997, chest tag, 15"/36cm, (3) Classic teddy bear 1907, yellow tag 000270, pink mohair, chest tag, 13"/33cm, (4) Club Event Bears 2006, white tag 420580, LE 2006, pink mohair, 7"/18cm, all MISSING swing label certificate, otherwise Good Plus to Excellent; (4).  
**Estimate:** £60-80



**Lot No. 1027**

Steiff Teddy Bear pair including: (1) Mother & Child Teddy Bear, German Exclusive 2004, white tag 671678, LE 1500, comprising pair of blonde mohair Bears, chest tags, MISSING certificate and embroidered bag, 11"/28cm and 5.5"/14cm; (2) Stencil Bear, white tag 038969, LE 1904, blonde mohair, MISSING certificate, 11"/28.5cm; Good Plus to Excellent; (2).  
**Estimate:** £60-80



**Lot No. 1028**

Steiff teddy bear trio including: (1) British Collector's 2011 bear, white tag 663901, LE 2000, black mohair, chest tag, 14"/36cm, (2) Classic teddy bear, yellow tag 00553, caramel / grey mohair, chest tag, 14"/36cm, (3) British Collectors' teddy bear 2010, white tag 663291, LE 3000, mohair, chest tag, 15"/38cm, all MISSING swing label certificates, otherwise Good Plus to Excellent; (3).  
**Estimate:** £60-80





**Lot No. 1029**

Steiff teddy bear group x 5 including: (1) Nuremberg Toy Museum "25th Anniversary" blonde bear, 1996, white tag 998928, LE 3000, complete with chest, 10.25"/26cm, (2) Horoscope Birthday Bear, Taurus, sign of the Bull, club edition bear 2004/2005, white tag 420399, blonde mohair, wearing embroidered orange sports shirt, 10"/26cm, (3) Steiff Classic cream alpaca, yellow tag 027680, 7.5"/19cm, (4) Steiff Club Event Bear 2001, white tag 670589, limited to production year 2001, blonde mohair bear, 7"/18cm, (5) Steiff The Exhibition Bear, white tag 661419, UK & Ireland exclusive, 2004, LE 1500, golden mohair, holding a scaled down replica of the Grand Prix Medal awarded to Steiff in 1904, 8"/20cm, all Good Plus to Excellent; (5).

**Estimate:** £50-70



**Lot No. 1030**

Steiff Teddy Bear pair including: (1) Teddy Bears of Witney Xenia, white tag 660467, LE 1500, cream mohair, MISSING certificate, 17"/43cm; (2) Barle 35PB replica 1905 Teddy Bear, white tag 404207, LE 6000, light blonde mohair, with moulded sealed wax nose, chest tag, MISSING certificate, 19.75"/50cm; Good Plus to Excellent; (2).

**Estimate:** £60-80



**Lot No. 1031**

Steiff 55PB 1902 replica teddy bear, white tag 404009, LE 7000, rust mohair, with moulded sealing wax nose, chest tag, MISSING certificate, Good Plus to Excellent, 21.5"/44cm.

**Estimate:** £50-70



**Lot No. 1032**

Steiff Teddy Bear pair including: (1) New Mr Cinnamon teddy bear, white tag 038846, LE 3000, blonde mohair bear with brown airbrushed features, chest tag, MISSING certificate, 17"/45cm; (2) Melanie, white tag 669651, LE 1500, exclusive to North America, golden mohair, MISSING certificate, 16"/41cm; dusty but otherwise Good Plus to Excellent; (2).

**Estimate:** £60-80



**Lot No. 1033**

Steiff Teddy bear group x 4 including: (1) Steiff Original Mask teddy bear, yellow tag 0201/51, blond mohair, 20"/51cm, (2) Steiff Original Mask teddy bear, yellow tag 001208, chest tag, mohair (faded), 9"/23cm, (3) Brummbar Bear, yellow tag 0228/48, mohair, 19"/48cm, (4) Brummbar, yellow tag 011757, mohair, chest tag, 11"/28cm, all MISSING swing labels, (some marks to paw pads), otherwise Good to Good Plus; (4).

**Estimate:** £60-80



**Lot No. 1034**

Steiff teddy bear pair including: (1) Moon Ted, white tag 662423, LE 2000, dark brown and cream alpaca teddy bear, tilt growler, MISSING certificate, 16"/40cm; (2) Teddy Bear, white tag 038266, LE 2006, brown tipped alpaca teddy bear wearing dark tan leather collar with Steiff embossed buttons, MISSING chest tag and certificate; Good Plus to Excellent; (2).

**Estimate:** £60-80



**Lot No. 1035**

Steiff Original Mask Teddy bear trio including: (1) Steiff Original Mask teddy bear, yellow tag 010958, chest tag, mohair, (mark to paw pad - see photo), 20"/51cm, (2) Steiff Original Mask teddy bear, yellow tag 010453, chest tag, mohair, 20"/51cm, (3) Steiff Original Mask yellow tag 011108, chest tag, mohair, 17"/43cm, all MISSING swing labels, otherwise Good Plus to Excellent; (3).

**Estimate:** £60-80



**Lot No. 1036**

Steiff UK British Collectors' Baby Bear Set 1989 to 1993, white tag 654497, limited edition of 1847, comprising four miniature versions of the British Collectors' Bears released during this period (MISSING 1993 bear), plus x 2 Baby bears 2002, 2003, all having chest tags, mohair, MISSING wooden display case & certificate, all bears measure 6.5"/17cm, Excellent; (6).

**Estimate:** £60-80



**Lot No. 1037**

Steiff British Collectors UK Baby Bear Set, 1994-1998, issued in 1999, white tag 654695, including all chest tags, MISSING wooden presentation case and certificate, otherwise Excellent, bears measure; 7"/18cm.

**Estimate:** £50-70



**Lot No. 1038**

Steiff teddy bear group x 5 including: (1) Limited Edition blonde mohair bear, white tag 655258, LE 3000, 13"/33cm, (2) Vedes blond mohair bear, 1994, white tag 650901 (discoloured), LE 6000, 16.5"/42cm, (3) masked steiff, yellow tag 994883, mohair, 8"/20cm, (4) Steiff 16th teddy bear Rally, white tag 989643, LE 400, swing label, 9"/23cm, (5) Club Event Bear 2005, white tag 420498, mohair, 8"/21cm, all MISSING swing label certificate, otherwise Good Plus to Excellent; (5).

**Estimate:** £50-70



**Lot No. 1039**

Steiff teddy bear miniatures group plus others x 6 including: (1) Miniature brown bear, yellow tag 991844, swing label, chest tag, 4"/10cm, (2) Original white bear, white tag 0203/18, chest tag, white mohair, 7"/18cm, (3) Original white bear, white tag 0203/11, chest tag, white mohair, 4"/11cm, (4) Steiff Club Event Bear 2002, white tag 420337, limited to production year 2002, white mohair, 8"/21cm, (5) Steiff Club Event Bear 2003, white tag 420382, black mohair, limited to year of production 2003, 8"/21cm, (6) Steiff Club Event Bear 2004, white tag 420443, mohair, 8.25"/21cm, all MISSING swing label, otherwise Excellent; (6).

**Estimate:** £40-60



**Lot No. 1040**

Steiff teddy bear trio including: (1) 1951 blonde replica, white tag 408434, 1997, LE 4000, blond mohair, 19.75"/50cm, (2) Classic teddy bear, yellow tag 028724, chest tag, off white mohair, 10"/26cm, (3) Classic teddy bear, yellow tag 028717, chest tag, off brown mohair, 10"/26cm, all MISSING swing label, otherwise Good Plus to Excellent; (3).

**Estimate:** £60-80



**Lot No. 1041**

Steiff Teddy bear group x 4 including: (1) Steiff Original Mask teddy bear, yellow tag 0201/51, blond mohair, (faded), 20"/51cm, (2) Steiff Original Mask teddy bear, yellow tag 0202/41, chest tag, mohair, 16"/41cm, (3) Steiff Original Mask teddy bear, yellow tag 0203/36, chest tag, white mohair, 14"/36cm, (4) Steiff Original Mask teddy bear, yellow tag 001253, chest tag, mohair (faded), 11"/29cm, all MISSING swing labels, (some marks to paw pads), otherwise Good to Good Plus; (4).

**Estimate:** £60-80



**Lot No. 1042**

Steiff Teddy Boy replica 1905, white tag 404320, LE 6000, pale blonde mohair, chest tag, MISSING certificate, Good Plus to Excellent, 19.75"/50cm.

**Estimate:** £50-70



**Lot No. 1043**

Steiff Teddy Bear pair including: (1) Replica 1907 Club Bear, white tag 420825, LE 3000, black mohair, chest tag, MISSING certificate, 15.75"/40cm; (2) Rotary International Centennial Celebration 1905-2005, a bear for a polio free world, white tag 661440, LE, 2004, black mohair, medallion, 13"/33cm; Good Plus to Excellent; (2).

**Estimate:** £50-70



**Lot No. 1044**

Steiff teddy bear replica 1906, white tag 404405, LE 1906, red brown mohair, chest tag, MISSING certificate & box, otherwise Excellent; 27.5"/70cm.

**Estimate:** £60-80



**Lot No. 1045**

Whittle-Le-Woods Bears Tarquin, artist designed teddy bear by Irene and Mike Whittle (UK), cinnamon mohair, OAK, black glass eyes, black vertically stitched nose, fully jointed, felt pads, wearing a wine/gold satin brocade jacket and cap with tassel, with swing label certificate, Excellent; 15"/38cm.

**Estimate:** £60-80



**Lot No. 1046**

Artist designed Bears by Sue Quinn teddy bear pair including: (1) James Gold, artist designed by Sue Quinn, 2016, golden curly mohair, black glass eyes, black vertically stitched nose, fully jointed, suedette pads, black claw stitching, with swing label certificate, 17"/44cm, (2) Callum, artist designed by Sue Quinn, golden wavy mohair, black glass eyes, black vertically stitched nose, fully jointed, suedette pads, black claw stitching, with swing label certificate, 11"/28cm, both Excellent; (2).

**Estimate:** £60-80



**Lot No. 1047**

Artist designed Bears by Sue Quinn teddy bear pair including: (1) Grey unnamed bear, artist designed by Sue Quinn, grey curly mohair, black glass eyes, black vertically stitched nose, fully jointed, suedette pads, black claw stitching, with swing label certificate, 11"/28cm, (2) Off white bear, artist designed by Sue Quinn, off white wavy mohair, black glass eyes, black vertically stitched nose, fully jointed, suedette pads, black claw stitching, with swing label certificate, 11"/28cm, both Excellent; (2).

**Estimate:** £50-70



**Lot No. 1048**

Teddy Bear group x 5 including: (1) Kosen Lynx Lying, non jointed, plastic eyes, slight weighted body, air brushed detail, wooden tag & swing labels, 24"/61cm, (2) Hermann Spielwaren My Little Pumpkin bear, LE 50, orange plush, swing label, 9"/23cm (seated), (3) Hermann Spielwaren Arno, LE 300, mohair, swing label, 16"/41cm, (4) Merrythought teddy bear, blond mohair, red ribbon, 14"/36cm, plus others, Good to Good Plus; (5).

**Estimate:** £60-80



**Lot No. 1049**

Hermann Spielwaren teddy bear trio including: (1) Bavarian Beer Brewer, LE 500, blond mohair, swing label certificate, 15"/38cm, (2) Johannes Brahms, LE 500, mohair, swing label certificate, 17"/44cm, (3) Edward Grieg, mohair, swing label certificate, 16"/41cm, (4) Composer Bear, LE 330, musical, swing label certificate, 11"/28cm, (dusty, would benefit from cleaning), all Good Plus to Excellent; (4).

**Estimate:** £60-80



**Lot No. 1050**

The British Thomson Houston Coy Ltd 'Disney' Mazda 'Mickey Mouse' lights - finished in various colours including pink, lilac, yellow, white, featuring many 'Disney' characters to include Daffy Duck, Pluto, Mickey Mouse, plus others, carded base and colour picture card is generally Good outer lift off lid box is Good - still a bright example that displays well, MISSING one light, some cracks to a light - see photo & untested; otherwise Good.

**Estimate:** £30-50





**Lot No. 1051**

Ashton-Drake Galleries Gene & other group including: (1) Ashton Drake Gallerie Gene On The Avenue plus some accessories; (2) Ashton Drake Galleries Madra Turbulence, (hands are sticky); (3) Madame Alexander Cherry Blossom Jade, some yellowing to body); (4) Madame Alexander Coquette Cissy; Good; (4).

**Estimate:** £30-50



**Lot No. 1052**

Sindy re-root doll group x four including: two x strawberry blonde; one x brunette; one x maroon; Good Plus; (4).

**Estimate:** £40-60



**Lot No. 1053**

Mixed Fashion Doll group including: (1) Mattel Harley-Davidson Ken; (2) Mattel Skipper (plastic to legs has degraded); (3) Mattel Monster High Ghouls Rule Frankie Stein; (4) Pair of Takara Jenny dolls; (5) Trio of Palitoy Tressy; Good to Good Plus; (8).

**Estimate:** £60-80



**Lot No. 1054**

Mattel Barbie doll pair & group of fashion doll clothing including: Fashion Luncheon reproduction doll, The Spotlight reproduction barbie doll, doll shoes, clothing, plus others, unchecked for completeness or correctness, Good to Good Plus; (Qty).

**Estimate:** £50-70



**Lot No. 1055**

Mattel vintage Barbie doll trio including: (1) A Fashion Queen Barbie doll, 1963, impressed Midge c.1962 Barbie c.1958 by Mattel Inc patented, blue eyes, brown moulded hair and blue head band, original brunette wig (slight stickiness to top half of arms and legs), Japan to bottom of foot, (2) Midge, impressed Midge c.1962 Barbie c. 1958 by Mattel Inc patented, 1963, red hair, lip, nail decoration, freckles (has faded), (3) Quick Curl Barbie 1973, impressed 1966 Mattel INC U.S & foreign patented, other pat's pending, twist and turn, made in Taiwan, (left / right arm and leg detached but present), Fair Plus to Good; (3).

**Estimate:** £50-70



**Lot No. 1056**

Jan McLean Designs (New Zealand) vinyl doll, artist designed, LE 366/3500, 2000, signed on the shoulder plate by Jan McLean, MISSING swing label and certificate, eyes are discoloured, otherwise Excellent, 21"/54cm.

**Estimate:** £50-70



**Lot No. 1057**

Vinyl Doll Group including: (1) Gotz Lison vinyl doll, artist designed by Elisabeth Lindner, 22"/56.5cm; (2) Gotz Joke Grobben (Holland) Annabelle vinyl doll, artist designed, LE 873/1000, 1997, within Fair Plus box, 25.5"/65cm; (3) Kish & Company blonde doll, 16"/41cm; (4) Kids and Heart The Lonely Doll, 9.5"/24.5cm;

**Estimate:** £60-80



**Lot No. 1058**

Mikelman fashion doll pair including: (1) Barbie Clone retro Charisse Mikelman doll, plus blond hair doll (discolouration), Retro Candi, Candi Couture outfit, Good to Good Plus; (2).

**Estimate:** £20-30



**Lot No. 1059**

Jan McLean Designs (New Zealand) Zanthe vinyl collector's doll, 2006, LE 85/250, auburn hair, wearing hand-beaded black silk chiffon clothing, black high heeled calf length boots (some scuffs), certificate, within Fair Plus box, otherwise Excellent to Excellent Plus, 38"/96cm.

**Estimate:** £180-220



**Lot No. 1060**

Mattel Barbie doll clothes including: (1) vintage Francie Snake Charmers 1970s outfit #1245, (2) Reproduction Commuters set, (3) vintage Theatre Date outfit #959 satin green, (4) vintage Francie Shopping Spree outfit, (5) vintage Francie red leather coat #1769, (6) Casey jumpsuit 1967, plus others, unchecked for completeness or correctness, Good to Good Plus; (Qty).

**Estimate:** £40-60



**Lot No. 1061**

Mixed group of 16" vinyl dolls including: Tonner; Somer & Field The Mod British Birds (one doll has a discoloured face); includes some clothing (some vinyl clothing items have begun to degrade); unchecked for completeness or correctness; Good to Good Plus; (Qty).

**Estimate:** £50-70



**Lot No. 1062**

Ideal Tammy doll trio, brunettes x 2, blond hair, with stands, 1960s, (blond hair doll is sticky), otherwise Good to Good Plus; (3).

**Estimate:** £50-70



**Lot No. 1063**

Mattel Porcelain Barbie doll trio including: (1) Solo In The Spotlight Porcelain Doll 1990, (2) 1991 Barbie Porcelain Treasures Gay Parisienne, (3) 1989 Wedding Party doll, unchecked for completeness or correctness, Good to Good Plus; (3).

**Estimate:** £40-60



**Lot No. 1064**

Mattel Barbie doll group x 4 including: (1) Casey 1967, twist 'n' turn waist, smiling expression, #1180 brunette hair (discolouration to arms), (2) A Fashion Queen Barbie doll, brown moulded hair and head band, original brunette/ auburn wig, Japan to bottom of foot, (3) Francie brunette twist 'n' turn waist, rooted eyelashes, (4) Francie 1966, Blond hair, straight waist, rooted lashes, plus Wild Bunch coat, all dolls are sticky, Fair to Good; (4).

**Estimate:** £50-70



**Lot No. 1065**

Mixed teddy bear group including: Ty; Peter Rabbit; range of vintage mohair bears; plus others; Fair Plus to Good; (Qty).

**Estimate:** £20-30



**Lot No. 1066**

Charlie Bears Minimo Doodles Yorkshire Terrier, designed by Isabelle Lee, LE 2000, golden and black long pile mohair, MISSING swing label certificate, Excellent; 8"/20cm.

**Estimate:** £60-80



**Lot No. 1067**

Dean's Rag Book Tru-to-Life Chimpanzee (left thumb is detached but present); also included Steiff mohair bear charms; Hermann Spielwaren mohair bear badges; Steiff mohair panda (yellow tag 408311) requires repair; Fair Plus to Good (Qty).

**Estimate:** £30-50



**Lot No. 1068**

Vintage doll group including: Effanbee Doll Classics American Child, Bisque doll, The House Hold vintage magazines, plus others, Fair to Good; (Qty).

**Estimate:** £20-30



**Lot No. 1069**

Pedigree Sindy trio, two x blonde, one x brunette, one doll is missing a finger otherwise Good; (3).

**Estimate:** £30-50



**Lot No. 1070**

Pedigree Sindy trio, two x brunette, one x blonde (degrading plastic and stain to limbs), included one dressed in Air Hostess outfit; Good to Good Plus.

**Estimate:** £30-50



**Lot No. 1071**

Pedigree vintage Sindy doll group including: x 2 brunettes, x 3 blondes and 1 sleepy eyed doll, Good to Good Plus; (6).

**Estimate:** £50-70



**Lot No. 1072**

Pedigree Sindy & Patch includes: (1) Active Sindy (left ankle is broken); (2) Blonde Sindy; (3) Patch, light brown hair; Good to Good Plus; (3).

**Estimate:** £50-70





**Lot No. 1073**

Sindy Doll group, four x blonde, yellowed chest to one doll otherwise Good; (4).

**Estimate:** £30-50



**Lot No. 1074**

Mixed doll group including: modern bisque, hard plastic, costume dolls, plus one doll lamp (untested); Good; (Qty).

**Estimate:** £10-20



**Lot No. 1075**

Mattel Silkstone Barbie Trench Setter, Gold Label, Robert Best Collection, # B3442, within Good Box (marks to box - see photo), unchecked for completeness or correctness; Excellent to Near Mint.

**Estimate:** £60-80



**Lot No. 1076**

Steff Trio including: (1) Steiff Watch Teddy LE 2000, white tag 000000 (ear tag is MISSING, button is present), honey mohair, MISSING chest tag, includes watch, 17"/43cm; (2) The World's First Teddy Bear, exclusive to Danbury Mint, white tag 664946, LE 1902, 2016, dark brown mohair, with coin medallion, 11"/28cm; (3) Jack the Rare Black Alpaca Bear, white tag 662546, LE 2179, 10"/26cm,; Good; (3).

**Estimate:** £60-80



**Lot No. 1077**

The Osbourne Family mixed group including: Ozzy Osbourne plush doll, Ozzy & Maggie doll (loose within box), Bobble Heads, plus others, unchecked for completeness or correctness, Fair to Good; (Qty).

**Estimate:** £30-50



**Lot No. 1078**

Steff Group including: (1) Teddy Bear Jack in the Box, white tag 037818 (tag has yellowed slightly), LE 3000, apricot mohair teddy bear seated within wooden Jack in the Box, 9"/23cm; (2) Cockie Meerkat, yellow tag 045257, mohair, chest tag, swing label, 8"/20.5cm; (3) 1948 Blonde Replica Teddy Bear, white tag 408328, LE 5000, 1997, golden artificial silk plush, chest tag, MISSING certificate, 10"/25cm; (4) Fish, yellow tag 121852, mohair, felt fins, 5.5"/14.5cm; Good to Good Plus; (4).

**Estimate:** £40-60



**Lot No. 1079**

Steff Masked Teddy Bear pair including: (1) Original blond mohair Teddy Bear, yellow tag 010453, 1991-1996, swing label, chest tag, 21.5"/55cm, (2) Original Teddy, yellow tag 010408, MISSING chest tag and swing label, 17"/43cm, both Good to Good Plus; (2).

**Estimate:** £40-60



**Lot No. 1080**

Steff Masked Teddy Bear trio including: (1) Beige mohair, yellow tag 010958, chest tag, 21"/54cm, (2) Original dark blond mohair Teddy bear, yellow tag 010903, 1991-1993, chest tag, 17"/43cm, (3) beige mohair, yellow tag 010859 0223/36, MISSING chest tag, swing label, 14"/36cm, all Good to Good Plus; (3).

**Estimate:** £50-70



**Lot No. 1081**

Steiff Trio including: (1) Steiff Classic Teddy Bear, yellow tag 011153, dark brown mohair, chest tag, 21.5"/55cm; (2) Steiff Classic Teddy Bear, yellow tag 011108, dark brown mohair, chest tag, MOTH damage holes in pads (please see photographs) 16"/41cm; (3) Steiff Classic Teddy Bear, yellow tag 011054, dark brown mohair, 14"/36cm; Good; (3).

**Estimate:** £40-60



**Lot No. 1082**

Steiff Paul the Growling Bear Replica 1908, white tag 400513, LE 1908, 2008, mohair - this is a replica of the first ever teddy bear to have a growl - with chest tag, MISSING certificate, Good Plus, 18"/46cm.

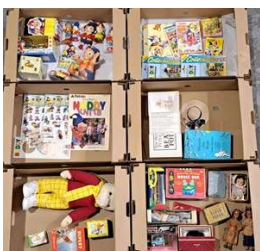
**Estimate:** £50-70



**Lot No. 1083**

Steiff & other vintage group including: Steiff Jocko hand puppets (Missing tags and buttons); Grissy, plush donkey, EAN 3610/22, chest tag, remains of swing label; plus others; Good; (6).

**Estimate:** £30-50



**Lot No. 1084**

Noddy, Rupert the Bear plus others including: Merrythought Rupert the Bear, Corgi Noddy, Noddy figures, Pelham Puppet Andy Pandy, plus others, Fair to Good; (Qty).

**Estimate:** £30-50



**Lot No. 1085**

Steiff Teddy bear group including: (1) Steiff 1909 replica golden mohair Teddy Bear, yellow tag 0165/51, 1980's, 20"/51cm, (2) Original Steiff teddy bear, yellow tag 0201/41, cream mohair, swing label, chest tag, 14"/36cm, (3) Steiff Issy Donkey Friend, plush, 11"/28cm, (4) Steiff, white tag 038945, mohair (moth damage throughout), (5) Steiff Baby Range Lamb soft cuddly rattle ball, yellow tag 235092, plus others, Fair to Good; (Qty).

**Estimate:** £30-50



**Lot No. 1086**

Steiff Classic Rupert the Bear, white tag 653568, LE 3000, alpaca, certificate, within Good Plus box, Excellent Plus, 11"/28cm.

**Estimate:** £60-80



**Lot No. 1087**

Mixed plush group including: Kosen (includes National Geographic monkey), Walt Disneyland Tramp, Boyes bears; plus others; Good; (Qty).

**Estimate:** £20-40



**Lot No. 1088**

Mixed Teddy Bear Group including: Schuco Nurnberger bear; Hermann Spielwaren Panda Bear Mama Mia, LE 24/250, 10.5"/27cm; Merrythought Golly; Artist Teddy Bears (including Deborah Canham); plus others Good to Good Plus; (Qty).

NB: These items are listed on the basis they are illustrative of a bygone culture in which there were different social norms. We understand the potential controversy surrounding this type of item but believe that providing transparent information about historical context fosters greater understanding of our complex cultural history.

**Estimate:** £50-70



**Lot No. 1089**

Vintage Teddy Bears & others including: Zotty Teddy Bears; Mohair Dog (MISSING eye and metal armature is protruding from rump); plus other; thinning to mohair throughout and some repair otherwise Fair Plus to Good, largest 10"/25.5cm.

**Estimate:** £20-40



**Lot No. 1090**

PLEASE CONTACT US FOR A POSTAGE QUOTE. Vintage Donkey on Wheels pair including: (1) Steiff, plush with mohair details (bald patches and mohair is shedding), MISSING button, MISSING saddle, surface corrosion to wheel frame, 23"/59cm high; (2) Dean's Rag Book, plush, tag to inner leg, surface corrosion to wheel frame, 18"/46cm high; Good; (2).

**Estimate:** £60-80



**Lot No. 1091**

Steiff Rupert the Bear Classic, white tag 653599, LE 1973, UK & Ireland exclusive, alpaca, certificate, within Good Plus box, Excellent, 11"/38cm.

**Estimate:** £60-80



**Lot No. 1092**

Charlie Bears Group including: (1) Soo Lee, CB 141496, plush, MISSING swing labels, 12"/30cm; (2) Liddy, CB161648A, plush, swing label, 10"/25cm; (3) Dick, CB161648B, plush, MISSING swing labels, 11"/28cm; (4) Agatha, CB171608, plush, swing labels, 12"/30cm; (5) Sparrow, CB131352, plush, swing labels, 10"/25cm; slight tobacco odour otherwise Good; (5).

**Estimate:** £60-80



**Lot No. 1093**

Steiff Trio including: (1) Steiff Grey Watch Teddy, 1992, white tag 606304 (ear tag has yellowed slightly), LE 4000, grey/blue mohair, chest tag, watch around wrist, MOTH damage to foot pads (please see photographs), 17"/43cm; (2) Clifford Berryman Bear, QVC USA exclusive after a caricaturist from the Washington Post, white tag 665097, LE 7000, 1997, brown mohair, 11"/28cm; (3) Snobby Bear, yellow tag 028267, blonde mohair, chest tag, swing label, 9"/23.5cm seated; Good to Good Plus; (3).

**Estimate:** £50-70



**Lot No. 1094**

Steiff white Muzzle Bear Replica 1908, 1988-1989, USA Exclusive, white tag 0174/46, 4575, white mohair, some marks to muzzle - see photo), MISSING certificate & box, otherwise Good to Good Plus; 18"/46cm.

**Estimate:** £50-70





**Lot No. 1095**

Steiff teddy bear trio including: (1) Steiff Classic Harlequin Bear, yellow tag 003530, red and blue mohair, with yellow/orange wool felt paw pads, fully jointed. chest tag, swing label, 12"/30cm, (2) Steiff Jubilee bear, white tag 671050, 2002, mohair, swing label, 10"/25cm, (3) Centenary bear, anniversary USA (1902-2002), yellow tag 660337, caramel mohair, with swing label, medallion, 12"/30cm, all Good to Good Plus; (3).

**Estimate:** £50-70



**Lot No. 1096**

Steiff teddy bear trio including: (1) Music Teddy replica 1951, white tag 408458, LE 7000, mohair, red felt disc to chest with bellows music box mechanism which plays "Fox, you have Stolen the Goose", chest tag, 13.75"/35cm, (2) Harrods Rosalia Musical Bear 2004, white tag 661655 (yellowing to tag), LE 1500, light blonde, plays "O Sole Mio", MISSING Venetian Mask & cane has snapped, chest tag (creased), 12"/30cm, (3) Classic Teddy Bear, brown mohair, white tag 038938, LE to production year 2004, complete with chest tag, swing label certificate (creased), 10"/25cm, all Good to Good Plus; (3).

**Estimate:** £50-70



**Lot No. 1097**

Steiff Teddy bear group x 4 including: (1) Steiff I Love You, yellow tag 660900, white mohair, 11"/28cm, (2) Steiff 1955 replica teddy bear with neck mechanism, white tag 408854, LE 4000, two-tone beige and cream mohair, MISSING chest tag, with certificate, neck mechanism does not work, 10"/25cm, (3) Classic Teddy Bear, brass mohair, white tag 038952, LE to production year 2004, chest tag, swing label, 10"/26cm, (4) Steiff Margaret Strong teddy bear, yellow tag 404597, blond mohair, MISSING chest tag & swing label, 9"/24cm, all Good; (4).

**Estimate:** £50-70



**Lot No. 1098**

Magic Lantern Slides group including: Water Babies based on illustrations by Warwick Goble, slides 1-22 (MISSING 23-24), within Good leather box; Mickey Mouse in the Moose Hunt/Pioneer Days/The Firefighters; Plus others; unchecked for completeness or correctness; Good; (Qty).

**Estimate:** £40-60



**Lot No. 1099**

Sylvanian Families group plus others including: Post Office, brown rabbit family, furniture, Chic A Boo with Cot, rocking horse & clothing, Cabbage Patch kids & Care bears figures, all Good; (Qty).

**Estimate:** £30-50



**Lot No. 1100**

Sindy/Barbie mixed group including: Mattel Ken dolls, Pedigree Sindy Dolls, range of fashion doll clothing, Sindy house items, unchecked for completeness or correctness, Fair Plus to Good; (Qty).

**Estimate:** £20-30



**Lot No. 1101**

Hasbro My Little Pony group including: Shew Stable, Nursery, Gusti Pony, Tinkle Eye Sweet Stuff Pony, Cotton Candy Pony, plus others, unchecked for completeness or correctness, Good; (Qty).

**Estimate:** £60-80



**Lot No. 1102**

Vintage & Antique doll group including: SFBJ 60 (French); Koenig & Wernicke; Pansy Borgfeblt & Co.; Plus others; all need repair (restring, ect); Fair Plus to Good; (5).

**Estimate:** £50-70



**Lot No. 1103**

MGA Bratz doll group including: Lil Bratz, clothing & dolls, Rock Angelz stage, furniture, unchecked for completeness or correctness, (would benefit from cleaning), otherwise Fair Plus to Good; (Qty).

**Estimate:** £60-80



**Lot No. 1104**

MGA Bratz doll group including: Bratz Babyz Big & Small, Big Babyz Motorbike Flames Rock Angelz Tricycle/ Trike, unchecked for completeness or correctness, (would benefit from cleaning), otherwise Fair Plus to Good; (Qty).

**Estimate:** £30-50



**Lot No. 1105**

MGA Bratz doll group including: Bratz Formal Funk FM Limo, Bratz Rock Angelz Party Plane, Bratz Life Style, Teletubbies Po's Scooter, Toy Story Buzz Lightyear Talking Model Kit, unchecked for completeness or correctness, (would benefit from cleaning), otherwise Fair Plus to Good; (Qty).

**COLLECTION ONLY**

**Estimate:** £20-30



**Lot No. 1106**

Mixed toy group including: Hasbro Sindy dolls and accessories, vintage Sindy/Paul clothing; Tonka Keyzers; TY Beanie Babies; Good Luck Trolls; McDonalds Smurfs; Snoopy figures; would benefit from cleaning otherwise Good; (Qty).

**Estimate:** £40-60



**Lot No. 1107**

Artist designed & Dean's Rag Book Teddy bear group x 4 including: (1) A Naomi Laight artist designed unnamed teddy bear, golden artificial silk plush, fully jointed, vertically stitched nose and claw stitching, sewn-in label to back, wearing denim waist jacket, MISSING swing label certificate, 10"/26cm, (2) Wendy Woo Creations artist designed Clyde bear, blond mohair, swing label, tartan ribbon, 13"/33cm, (3) Dean's Rag Book Den Denim Artist Showcase teddy bear, designed by Barbara Ann Cunningham, LE 12/50, pale blue with dark blue tip and cream mohair, with swing label certificate, some surface damage to paw pads, would benefit from cleaning, 12"/30cm, (4) Dean's Rag Book 1903 - 2003, 100 years, blond mohair, red ribbon, MISSING swing label, 15"/38cm, all Good to Good Plus; (4).

**Estimate:** £70-90



**Lot No. 1108**

Hugohouse Flossie teddy bear by Gregory Gyllenship (UK), LE 5 of 16, mauve mohair, vertically stitched nose, glass eyes, wool felt pads, fully jointed, swing label certificate, Good Plus to Excellent; 10"/26cm.

**Estimate:** £140-180



**Lot No. 1109**

Chad Valley vintage teddy bear, British, 1950s, golden mohair, glass eyes, black vertically stitched coal nose, with "Queen Mother" label to foot, Rexine paw pads (surface worn - see photo), fully jointed, blond mohair, stuffing has shifted to top of arms, Good to Good Plus; 16"/41cm.

**Estimate:** £80-120



**Lot No. 1110**

Collection of Teddy bears, plus others including: (1) Hermann-Spielwaren Max & Foxl in honour of Max Hermann and his historic trade mark bear Max, LE 1500, swing label certificate, apricot mohair bear, 15"/38cm plus small white and brown airbrushed terrier, 5"/13cm, (2) Steiff Paul the Growler teddy bear, white tag 037207, mohair, embroidered bow "1908-2008", MISSING swing label certificate, 11"/28cm, (3) Disney The Muppets Fozzie bear backpack, 21"/54cm, plus others, Good to Good Plus; (4).

**Estimate:** £50-70



**Lot No. 1111**

Charlie Bears group x 4 including: (1) Tiana, CB604794A, plush, with swing label, 11"/28cm, (2) Beatrice panda bear, CB 124969, LE 600, designed by Isabelle Lee and Charlie, tiger stripe and cream plush, swing labels, 12"/30cm, (3) Troy, CB604794B, LE 3000, designed by Isabelle Lee, beige and leopard print plush, swing label certificate, 11"/28cm, (4) Puddifoot, CB114797, LE 3000, plush, swing label certificate, 13"/33cm, all swing labels have discoloured, otherwise Good to Good Plus; (4).

**Estimate:** £60-80



**Lot No. 1112**

Charlie Bears Group including: (1) Morgan CB094335, plush, swing labels (faded), 15.5"/40cm; (2) Theo, CB094083, plush, swing labels (faded), 12"/31cm; (3) Niamh, CB 094079A, plush, swing labels (faded) 10"/25cm; (4) Zoe, CB093930, plush, swing labels, 12"/30cm; Good to Good Plus; (4).

**Estimate:** £60-80



**Lot No. 1113**

Charlie Bears teddy bear pair including: (1) James, CB 094049, 2009-2011, LE 900, blonde and golden plush, designed by Isabelle Lee and Charlie, with swing labels (faded), 14"/35.5cm, (2) Gareth, CB104710, plush, swing labels (faded), 13"/33cm, both Good to Good Plus; (2).

**Estimate:** £50-70



**Lot No. 1114**

Charlie Bears Trio including: (1) Michael, CB114817, plush, swing labels (faded), 18.5"/47cm; (2) Tracy, CB 114655, plush, swing labels (faded), 13"/33cm; (3) Shreddie, CB 114787, plush, swing labels (faded), 12"/30cm; Good to Good Plus; (3).

**Estimate:** £50-70



**Lot No. 1115**

Charlie Bears Trio including: (1) Paige, CB094325, plush, swing labels (faded), 15"/38cm; (2) Cinders, CB 104709B, plush, swing labels (faded), 14"/36cm; (3) Robbie, CB 104725, plush, swing tags (faded), 13"/33cm; Good to Good Plus; (3).

**Estimate:** £50-70



**Lot No. 1116**

Charlie Bears teddy bear group x 4 including: (1) Tickle teddy bear, QVC only, CB630310D, 2014-2015, LE 5200, designed by Heather Lyell, cream and brown plush, swing labels, 13.5"/34cm, (2) Primrose Panda Bear, CB183962A, plush, with swing labels, 12"/30cm, (3) Bertie, CB194539, plush, swing labels, 11"/28cm, (4) Cindy, CB194524, plush, swing labels, 11"/28cm, fading to swing labels, otherwise Good to Good Plus; (4).

**Estimate:** £50-70





**Lot No. 1117**

Charlie Bears Group including: (1) Arthur, CB120004B, plush, swing labels (faded), 14"/36cm; (2) Alice, CB 094079B, plush, swing labels (faded), 10"/26cm; (3) Lita, CB 114810A, plush, swing label (faded), 16"/41cm; (4) Kitty, CB114789, plush, swing label (faded), cloudy eyes, 10.5"/27cm; (5) Imogen, CB094323, plush, swing labels (faded), cloudy eyes, 13"/33cm; Fair Plus to Good; (5).

**Estimate:** £40-60



**Lot No. 1118**

Charlie Bears Teddy bear group x 4 including: (1) Clara teddy bear, CB193747B, 2009-2013, LE 3000, beige with white tip plush, magnets in her paws and mouth, so she can clasp her hands together, cover her mouth or hold hands with other magnet bears, 14"/35.5cm; (2) Heather teddy bear, CB193747C, 2009-2013, LE 3000, light brown with white tip plush, magnets in her paws and mouth, so she can clasp her hands together, cover her mouth or hold hands with other magnet bears, 14"/35.5cm, (3) Parker (magnet bear), CB110307, plush, with swing labels, 17"/43cm, (4) Bag Buddy Boo, plush keyring bear, CB615009, swing label, (would benefit from cleaning), otherwise Good to Good Plus; (4).

**Estimate:** £50-70



**Lot No. 1119**

Charlie Bears Group including: (1) Todd, CB194518, plush, swing labels (faded), 13"/33cm; (2) Aaron, CB193929B, plush, swing label (faded), 12.5"/32cm; (3) Jenkins, CB614848, plush, swing labels (faded), 14"/36cm; (4) Aidan, CB104738, plush, swing labels (faded), 10"/25cm; (5) group of Charlie Bears booklets, pen, keyrings and a badge; Good to Good Plus; (Qty).

**Estimate:** £50-70



**Lot No. 1120**

Charlie Bears bags, 39 x red; 10 x cream, 1x Minimo drawstring bag, Good Plus; (50).

**Estimate:** £20-30



**Lot No. 1121**

Charlie Bears Trio including: (1) Ruby, CB 094080A, dark red and cream with grey tip plush, MISSING swing labels, 12"/30cm; (2) Kirsty, CB 614847A, pink and brown plush, swing labels (faded), 13.5"/34cm; (3) Plum Pudding, CB614999, purple plush, swing labels (faded), 14"/36cm; Good to Good Plus; (3).

**Estimate:** £60-80



**Lot No. 1122**

Charlie Bears group x 4 including: (1) Tasha, cream with brown tip long pile plush, swing labels, 14"/36cm, (2) Special Edition Charlie Brook teddy bear, for QVC, CB 173718, plush, swing labels, 13"/33cm, (3) Olly, CB110310A, LE 6000, 2011-2014, designed by Heather Lyell and Charlie, grey with brown tip plush, wobble jointed, with swing label, 12"/30cm, (4) Johnny, CB093515A, plush, swing label, 15"/38cm, all swing labels have faded / discoloured, otherwise Good to Good Plus; (4).

**Estimate:** £50-70



**Lot No. 1123**

Charlie Bears Trio including: (1) Hattie, CB614865, plush, swing labels (faded), 16"/41cm; (2) Kiki, CB 124961, plush, swing labels (faded), 13.5"/34cm; (3) Boo, grey plush, swing label (faded), 10"/26cm; Good to Good Plus; (3).

**Estimate:** £50-70



**Lot No. 1124**

Charlie Bears Minimo blossom panda bear, LE 2000, mohair, swing label certificate, Good to Good Plus; 8"/20cm.

**Estimate:** £60-80



**Lot No. 1125**

Charlie Bears Trio including: (1) Fuddy, CB104716C, grey plush, swing labels (faded) 12"/31cm; (2) Laura, CB 104693, purple tipped plush, swing labels (faded), 10"/26cm; (3) Bryn, CB 124917B, tiger stripe and cream plush, swing labels (fading), 12"/30cm; Good to Good Plus; (3).

**Estimate:** £50-70



**Lot No. 1126**

Charlie Bears Dumpling Isabelle Minimo Collection teddy bear, designed by Isabelle Lee, LE 2000, beige mohair, with swing label certificate, otherwise Good to Good Plus; 8"/20cm.

**Estimate:** £50-70



**Lot No. 1127**

Charlie Bears teddy bear trio including: (1) Huey panda bear, CB614847B, plush, with swing label (discolouration to tags), 13.5"/34cm, (2) Heidi, CB614839, 2011-2015, LE 3500, QVC 2011 exclusive, grey with dark blue tip plush, with swing labels (discolouration to tags), 13"/33cm, (3) Katie, CB083804, plush, (MISSING swing label), 10.5"/27cm, all Good to Good Plus; (3).

**Estimate:** £50-70



**Lot No. 1128**

Charlie Bears pair including: (1) Charlie Bears Grandma, CB131405, off white plush, swing labels (faded), 16.5"/42cm; (2) Charlie Bears Grandpa, CB 131406B, grey plush, swing labels (faded), 16.5"/42cm; dusty otherwise Good to Good Plus; (2).

**Estimate:** £80-100



**Lot No. 1129**

Charlie Bears Panda teddy bear trio including: (1) Naomi panda bear, CB114735, plush, swing labels (faded), 13"/33cm; (2) Claire panda bear, CB104722, plush, with swing labels (faded), 14"/35.5cm, (3) Orlagh, CB0104634, with swing labels (faded), 14"/36cm, all Good to Good Plus; (3).

**Estimate:** £50-70



**Lot No. 1130**

Chad Valley Vintage teddy bear, blonde mohair (some areas of thinning and balding), fully jointed, plastic eyes, cloth label to left foot pad (faded), Good to Good Plus, 17"/43.5cm.

**Estimate:** £30-50



**Lot No. 1131**

Pelham Puppet group including: Pinky; Perky; Witch; Policeman; plus others; Good Plus; (8).

**Estimate:** £60-80



**Lot No. 1132**

1961 Gerry Anderson Supercar Professor Popkiss Pelham Puppet, includes original instruction sheet, within Good Plus box; a couple of small chip to hair otherwise Excellent.

**Estimate:** £60-80



**Lot No. 1133**

Gerry Anderson's Twizzle Pelham Puppet, 1957-1962, within Good Plus box, mark to tip off nose otherwise Good Plus to Excellent.

**Estimate:** £60-80



**Lot No. 1134**

Gerry Anderson Supercar Doctor Beaker Pelham Puppet, includes original instruction sheet, within Good Plus box; crack to neck otherwise Good to Good Plus.

**Estimate:** £40-60



**Lot No. 1135**

Mixed group of costume dolls including: wood, celluloid, cloth, plus others; Good; (Qty).

**Estimate:** £20-30



**Lot No. 1136**

Collection of mixed teddy bears including: McDonalds toys, Care bears Funshine, Pound Puppies, Andrex, Furreal Friends, Scooby Doo, plus others, condition varies from Fair to Good; (Qty).

**Estimate:** £30-50



**Lot No. 1137**

Steiff Group including: (1) Paul The Glower bear, white tag 037221, mohair, swing label, 12"/31cm; (2) Margaret's Teddy Bear, white tag 038495, mohair, swing label, 12"/31cm; (3) Love You Bear, yellow 002892, mohair, swing label, 10"/26cm; (4) Steiff Club bear 2012, mohair, 4"/10.5cm; (5) Fynn bear in suitcase, yellow tag 668807, plush, 10"/26cm; would benefit from cleaning (signs of INCECT DAMAGE); Fair Plus to Good; (5).

**Estimate:** £50-70



**Lot No. 1138**

Steiff Teddy Bear Trio including: (1) Musical Jerusalem Teddy Bear, white tag 663017, LE 2000 exclusive to UK and Ireland, mohair embroidered with English roses, internal musical box plays Jerusalem, MISSING certificate, 12"/30cm; (2) Shelly Teddy Bear, white tag 035784, LE 1500, white mohair, wearing a Swarovski Elements shell pendant on a string of pearls, matching the organza ribbon and pearl in her hair, swing label, MISSING certificate, 11.5"/29cm; would benefit from cleaning and have signs of INCECT DAMAGE; fair Plus to Good; (2).

**Estimate:** £50-70



**Lot No. 1139**

Steiff Joseph Classic teddy bear, white tag 037238, LE 2008, ecru mohair, fitted with an interactive battery operated music box, which allows the playing of German and English language songs from the musical Joseph and the Amazing Technicolor Dream Coat, wearing silk multi coloured jacket, MISSING certificate, untested, would benefit from cleaning otherwise Good, 12"/30cm.

**Estimate:** £50-70





**Lot No. 1140**

Vintage Teddy Bear pair including: (1) Chiltern Hugmee, mohair (balding), repairs to neck and pads, glass eyes, 23"/59cm; (2) Zotty Bear, mohair, glass eyes, 7"/18.5cm; Fair Plus to Good; (2).  
**Estimate:** £40-60



**Lot No. 1141**

Chad Valley Aerolite Moon Eyed vintage teddy bear, British, 1923-1926, button to left ear, replacement plastic eyes, brown vertically stitched nose, shaven muzzle, fully jointed, cloth pads, inoperative press squeaker, some wear to mohair and balding in places, stuffing has shifted, Good Plus to Excellent, 23"/59cm. NB Aerolite refers to the soft, light nature of the stuffing material used within the bear.  
**Estimate:** £200-300



**Lot No. 1142**

Charlie Bears Minimo Tiddlywink, LE 354/1000, beige mohair, swing label certificate, drawstring bag, Excellent, 8"/20cm.  
**Estimate:** £40-60



**Lot No. 1143**

Teddy Bear Trio including: (1) Clara, CB193747B, plush, magnets in her paws and mouth, so she can clasp her hands together, cover her mouth or hold hands with other magnet bears, swing labels, 14"/35.5cm; (2-3) Clemens mohair bear pair, (ashley blonde bear has some balding to mohair), 7"/18.5cm; Good to Good Plus; (3).  
**Estimate:** £30-50



**Lot No. 1144**

Artist Teddy Bear Group including: (1) Ochiltree Bears Bromley, designed by Sue Danton, OOAK, off white mohair, swing label certificate, 14"/36cm; (2-3) Vail of Bears pair, mohair, largest 15"/38.5cm; (4) Made with love, designed by Lorna, mohair, 11"/28.5cm; Good Plus; (4).  
**Estimate:** £40-60



**Lot No. 1145**

Lloyderson (Spain) Mary Vazquez Vintage Doll pair; felt, hand painted eyes, neck joints, Good Plus to Excellent, 13"/33.5cm  
**Estimate:** £40-60



**Lot No. 1146**

Steiff vintage hand puppets & other including: (1) Steiff mohair Rabbit hand puppet, chest tag; (2) Steiff mohair Jocko hand puppet, chest tag; (3) Steiff mohair Wolf hand puppet; (4) Steiff mohair Bully hand puppet; (5) Steiff mohair black hand puppet; (6) Steiff Gucki hand puppet, chest tag; (7) Fox and Goat artificial silk hand puppets; (8) four x felt/cloth vintage hand puppets; (9) Steiff trio of Micki & Macki figures; Good Plus to Excellent; (15).  
**Estimate:** £60-80



**Lot No. 1147**

Steiff vintage trio including: (1) Cosy Teddy, 1964, dralon, plush, felt claws, 11"/28cm; (2) Bessy dairy cow, yellow tag 1317.03, mohair, chest tag, 6"/16cm tall; (3) Giraffe, mohair, 11"/28.5cm; Good Plus to Excellent; (2).  
**Estimate:** £50-70



**Lot No. 1148**

Vintage Disney's Snow White and the Seven Dwarfs set similar to Knickerbocker or Italian brands such as Cresba or Lar, includes: Snow White, Doc, Grumpy, Sleepy, Bashful, Sneezy, Happy, Grumpy, Dopey; felt bodies with ceramic faces, metal armature within arms; chip to ceramic on right eyebrow of Dopey; armature wire is protruding on both of Snow Whites hands; otherwise Good Plus to Excellent; (8).

Vendor states: They were purchased between 1957 and 1960.

**Estimate:** £300-400



**Lot No. 1149**

Steiff vintage Peggy Penguin, yellow tag 4350,07, Aquatic Animals 1959-1964, button & tag underneath left wing, white, grey & yellow mohair, red beak, head swivels, Excellent; 19.5"/50cm.

**Estimate:** £60-80



**Lot No. 1150**

Steiff vintage Linda the Kangaroo & velvet baby joey, yellow tag 4350, 1953-1963, button to left ear, MISSING yellow tag, with chest tag (creased), white, grey & brown mohair, head swivels, (thread loose around left ear - see photo), Good to Good Plus; 19.5"/50cm, 4"/10cm.

**Estimate:** £50-70



**Lot No. 1151**

Vintage Disney Trio including: (1) Honest John from Pinocchio felt doll, possibly Cresbra, Lars or Lenci, wire armature (wire is protruding from bottom of cane), small hole to hat, 13"/33.5cm. (2) Schuco Bigo-Bello Plution, 1960s, black plastic eyes, felt nose, open felt mouth and tongue, golden mohair, black ears, airbrushed features and claws, wire armature, felt collar; 17"/18.5cm (from paw to shoulder); (3) Ratti (Italy) Mary Poppins doll, MISSING umbrella; Good Plus to Excellent; (3).

**Estimate:** £80-120



**Lot No. 1152**

Steiff Ralph Lauren The American Bear, yellow tag 406225, (button is present but MISSING yellow tag) LE 1179 of 3000, blond mohair, dressed in the classic knitted navy jumper with the American flag across the front, polo shirt, Ralph Lauren Polo designer jeans, MISSING swing labels, (slight storage oder), Good to Good Plus, 12"/31cm.

**Estimate:** £80-100



**Lot No. 1153**

Zwergnase Veronie vinyl artist designed doll by Nicole Marschollek-Menzner, LE 19/250, signed by the artist on the body, swing label certificate, within Good box; Excellent Plus, 15"/38cm.

**Estimate:** £80-120



**Lot No. 1154**

Zwergnase Siri vinyl artist designed doll by Nicole Marschollek-Menzner, LE 216/250, signed by the artist on the body, swing label certificate (creased), within Good box; Excellent Plus, 21"/54cm.

**Estimate:** £100-140



**Lot No. 1155**

Zwergnase Heloise vinyl artist designed doll by Nicole Marschollek-Menzner, LE 229/250, signed by the artist on the body, swing label certificate (creased), within Good box; Excellent Plus, 21"/54cm.

**Estimate:** £100-140



**Lot No. 1156**

Zwergnase Mathilt vinyl artist designed doll by Nicole Marschollek-Menzner, LE 55/250, signed by the artist on the body, swing label certificate (creased), within Good box; Excellent Plus, 20"/51.5cm.

**Estimate:** £80-120



**Lot No. 1157**

Zwergnase Albertine vinyl artist designed doll by Nicole Marschollek-Menzner, LE 39/250, signed by the artist on the body, swing label certificate (creased), within Good box; Excellent Plus, 24"/61.5cm.

**Estimate:** £80-120



**Lot No. 1158**

Zwergnase Tilde vinyl artist designed doll by Nicole Marschollek-Menzner, LE 72/250, signed by the artist on the body, swing label certificate (creased), within Good box; Excellent Plus, 25"/64cm.

**Estimate:** £100-140



**Lot No. 1159**

Zwergnase Famke vinyl artist designed doll by Nicole Marschollek-Menzner, LE 148/250, signed by the artist on the body, swing label certificate (creased), within Good box; a little dusty otherwise Excellent Plus, 22"/56.5cm.

**Estimate:** £100-140



**Lot No. 1160**

Zwergnase Agnetha vinyl artist designed doll by Nicole Marschollek-Menzner, LE 24/250, signed by the artist on the body, swing label certificate (creased), within Good box; Excellent Plus, 30"/77cm.

**Estimate:** £100-140



**Lot No. 1161**

Sigikid David vinyl artist designed doll, designed by Isle Wippler (Germany), #24728, LE 112/300, swing label certificate, within Fair Plus to Good box, Excellent, 26"/66.5cm.

**Estimate:** £50-70



**Lot No. 1162**

Sigikid Nada vinyl artist designed doll, designed by Maja Bill Buchwalder, #26165, LE 74/300, within Fair Plus to Good box, Excellent, 23"/59cm.

**Estimate:** £50-70





**Lot No. 1163**

Wiltrud Stein Minia porcelain artist doll, LE 20/20, Germany, with certificate, within Good Plus box, Excellent Plus, 8"/20cm.

**Estimate:** £40-60



**Lot No. 1164**

Zwergnase Milca (Club Doll) vinyl artist designed doll by Nicole Marschollek-Menzner, LE 39/250, signed by the artist on the body, swing label certificate (creased), within Good box; Excellent Plus, 15"/38cm.

**Estimate:** £80-120



**Lot No. 1165**

Wiltrud Stein Matze porcelain artist doll with Best Friend teddy bear, LE 29/40, Germany, with certificate, within Good Plus box, Excellent Plus, 9"/23cm.

**Estimate:** £40-60



**Lot No. 1166**

Wiltrud Stein Tine porcelain artist doll with plush dog, LE 11/20, Germany, with certificate, within Good Plus box, Excellent Plus, 9"/23cm.

**Estimate:** £40-60



**Lot No. 1167**

Wiltrud Stein Sven porcelain artist doll with plush dog, LE 18/24, Germany, with certificate, within Good Plus box, Excellent Plus, 9"/23cm.

**Estimate:** £40-60



**Lot No. 1168**

Wiltrud Stein Stella porcelain artist doll, LE 14/24, Germany, with certificate, within Good Plus box, Excellent Plus, 8.5"/21cm.

**Estimate:** £40-60



**Lot No. 1169**

Little Folk Lakeland Bears (UK) vintage teddy bear pair, Haweswater Honey plush, plastic eyes, fully jointed, original clothing, MISSING swing labels, Good to Good Plus; 20"/51cm, (2).

**Estimate:** £50-70



**Lot No. 1170**

Little Folk Lakeland Bears (UK) vintage teddy bear pair, Haweswater Honey plush, plastic eyes, fully jointed, original clothing, MISSING swing labels, Good to Good Plus; 20"/51cm, (2).

**Estimate:** £50-70



**Lot No. 1171**

Little Folk Lakeland Bears (UK) vintage teddy bear pair, Haweswater Honey and Grizedale Forest brown plush, plastic eyes, fully jointed, original clothing, MISSING swing labels, Good to Good Plus; 20"/51cm.  
**Estimate:** £50-70



**Lot No. 1172**

Doll Chair & Stands, wooden and metal, includes Gotz dolls stands, a little dusty otherwise Good to Good Plus; (Qty).  
**Estimate:** £5-10



**Lot No. 1173**

Zwernase Liesje vinyl artist designed doll by Nicole Marschollek-Menzner, LE 114/250, signed by the artist on the body, swing label certificate (creased), within Good box; Excellent Plus, 14"/36cm.  
**Estimate:** £80-100



**Lot No. 1174**

Zwernase JoJanne vinyl artist designed doll by Nicole Marschollek-Menzner, LE 32/250, signed by the artist on the body, swing label certificate (creased), within Good box; Excellent Plus, 21"/54cm.  
**Estimate:** £100-140



**Lot No. 1175**

Zwernase Benedetta vinyl artist designed doll by Nicole Marschollek-Menzner, LE 167/250, signed by the artist on the body, swing label certificate (creased), within Good box; Excellent Plus, 21"/53cm.  
**Estimate:** £80-120



**Lot No. 1176**

Zwernase Odine vinyl artist designed doll by Nicole Marschollek-Menzner, LE 8/100, signed by the artist on the body, swing label certificate (creased), within Good box; Excellent Plus, 22"/56.5cm.  
**Estimate:** £100-140



**Lot No. 1177**

Zwernase Odilie vinyl artist designed doll by Nicole Marschollek-Menzner, LE 53/250, signed by the artist on the body, swing label certificate (creased), within Good box; Excellent Plus, 21"/54cm.  
**Estimate:** £100-140



**Lot No. 1178**

Zwernase Lille vinyl artist designed doll by Nicole Marschollek-Menzner, LE 147/250, signed by the artist on the body, swing label certificate (creased), within Good box; Excellent Plus, 21"/54cm.  
**Estimate:** £100-140



**Lot No. 1179**

Zwergnase Trintje vinyl artist designed doll by Nicole Marschollek-Menzner, LE 114/250, signed by the artist on the body, swing label certificate (creased), within Good box; Excellent Plus, 21"/54cm.

**Estimate:** £100-140



**Lot No. 1180**

Sindy Trio including: The History of Sindy by Colette Mansell, paper back reference book; (2) Sindy Inside My Closet 1963-1979 by T L Illingworth; (3) Sindy meets the Dolly-Beats vinyl record; Excellent; (3).

**Estimate:** £60-80



**Lot No. 1181**

Pedigree Sindy group x five includes: three x blonde dolls; two x brunette dolls; some have had hair cut, unchecked for completeness or correctness otherwise Good to Good Plus; (5).

**Estimate:** £50-70



**Lot No. 1182**

Pedigree vintage Sindy doll pair including: (1) brunette doll, 1960s, straight leg, wearing original weekenders outfit, (2) Mini Sindy brunette doll, straight leg, (wobbly head), otherwise both Good to Good Plus; (2).

**Estimate:** £50-70



**Lot No. 1183**

Sindy Doll Group & other including: six x Sindy dolls, blonde and brunette; plus two x bootleg dolls (one has detached head); Good; (8).

**Estimate:** £40-60



**Lot No. 1184**

Pedigree Sindy Doll pair including: (1) Brunette in seaside sweetheart; (2) Blonde in Lunch Date; Good to Good Plus; (2).

**Estimate:** £50-70



**Lot No. 1185**

Pedigree vintage Sindy doll clothing group including: (1) Sweet Swimwear 1964, (2) Hair Switch, (3) Cape, (4) Shopping in the rain, (5) Winter Holiday outfit, plus others, unchecked for completeness or correctness, Good to Good Plus; (Qty).

**Estimate:** £40-60



**Lot No. 1186**

Pedigree vintage Sindy doll clothing group including: (1) Country Walks (2) Windy Days Hat, (3) Cape, (4) Duffle coat, (5) Sail Away outfit, (6) Air Hostess with BOAC flight bag, (7) Centre Court tennis dress, plus others, unchecked for completeness or correctness, Good to Good Plus; (Qty).

**Estimate:** £70-90





**Lot No. 1187**

Pedigree vintage Sindy's friend Paul doll trio plus clothing including: (1) Paul Doctor Outfit, (2) Seaside #13M02, (3) Casual outfit, (4) Time Off #13M05, trio of Paul dolls, plus others, unchecked for completeness or correctness, Good; (Qty).

**Estimate:** £60-80



**Lot No. 1188**

Sindy & Paul doll group including: three x Sindy dolls, two Paul dolls, dressed in various outfits; Good Plus; (5).

**Estimate:** £50-70



**Lot No. 1189**

Pedigree Sindy Paul doll group includes five x dolls, plus range of clothing such as Casual Jacket, Motorway Man, plus others; unchecked for completeness or correctness, Good to Good Plus; (Qty).

**Estimate:** £50-70



**Lot No. 1190**

Pedigree Sindy vintage brunette doll, 1960s, original outfit, straight leg, with original box, base of doll stand, within Fair Plus to Good box (discolouration), Good Plus to Excellent.

**Estimate:** £60-80



**Lot No. 1191**

Pedigree Sindy Paul group includes five x Paul dolls, plus a range of clothing such as a Doctor Outfit still within original packaging; unchecked for completeness or correctness otherwise Good to Good Plus; (Qty).

**Estimate:** £50-70



**Lot No. 1192**

Mixed doll group including: (1) Brownie Guide doll; (2) Chinese made fashion doll dressed as bride; (3-4) Pedigree hard plastic doll pair (have been named Mary & Jane); (5) English vinyl baby doll; some wear to the Pedigree clothing otherwise Good, largest 20"/51.5cm; (5).

**Estimate:** £20-40



**Lot No. 1193**

Pedigree vintage Sindy doll pair including: (1) brunette doll, 1960s, straight leg, wearing the winter holiday ski outfit, (2) blond doll, 1960s, straight leg, wearing Summer Days dress, unchecked for completeness or correctness, both Good Plus to Excellent; (2).

**Estimate:** £60-80



**Lot No. 1194**

Pedigree Sindy Patch vintage doll, 1965, blonde, wearing pink dress, Good Plus.

**Estimate:** £40-60



**Lot No. 1195**

Pedigree Sindy Patch vintage doll, 1960s, dressed in school uniform, elastic on hat is worn otherwise Good to Excellent.

**Estimate:** £50-70



**Lot No. 1196**

Pedigree Sindy Doll pair including: (1) Blonde Sindy dressed in Coffee Party; (2) Brunette Sindy dressed in Riding outfit; unchecked for completeness or correctness; Good Plus to Excellent; (2).

**Estimate:** £60-80



**Lot No. 1197**

Pedigree Sindy Patch vintage doll, 1965, brunette, wearing dungarees, shirt, (lip paint rubbed), Good to Good Plus.

**Estimate:** £50-70



**Lot No. 1198**

Pedigree Sindy Patch vintage doll, 1965, Auburn hair, wearing Birthday Party Dress & Cloak, (hair has been cut to the top of her head & fringe, small marks/dents to body see photo) Good to Good Plus.

**Estimate:** £40-60



**Lot No. 1199**

Pedigree Sindy doll trio including: (1) Sindy blond hair, wearing the Happy traveller outfit, (2) Sindy Blond hair doll, wearing Emergency ward outfit (loose legs, marks to body), (3) Paul doll (wearing Mattel ken outfit), unchecked for completeness or correctness, Good to Good Plus; (3).

**Estimate:** £60-80



**Lot No. 1200**

MGA Bratz doll furniture & accessories group including: Bratz Life E-Cafe, Retro Cafe, Sun Kissed Summer Hot Summer Splash 'N' Dance Cool Pool, Winter Adventure Camping Set, plus others, unchecked for completeness or correctness, Good to Good Plus; (Qty).

**Estimate:** £30-50



**Lot No. 1202**

MGA Bratz doll group & accessories including: Bratz Camera Electric Funk Glimmerin Glam Cam 35mm Film New Sealed Pink MGA 2003, Bratz Key Chains sealed, Bratz skate board, Y2K Bratz watches, Bratz Stash 'N' Style Jewellery Box, Bratz Babyz chef kool kat, plus others, unchecked for completeness or correctness, Good Plus to Excellent; (Qty).

**Estimate:** £60-80



**Lot No. 1203**

MGA Lil Bratz doll group playsets including: Lil Bratz Lil High School, Lil Bratz Rock Stars Backstage Bash Play Set, Stylin Space - Livin Room, Sno Fun Ski Lodge, Camper, Dolls, Clothing, Accessories, plus others, unchecked for completeness or correctness, otherwise Good to Good Plus; (Qty).

**Estimate:** £50-70



**Lot No. 1204**

MGA Lil Bratz doll (sealed) group of playsets including: Lil Bratz Spring Break Blitz Cloe, Lil Bratz Beach Bike, Lil Bratz Lil Coupe, Funky Fashion Furnishings, Fashion Packs x2, within Good packaging (some wear to box/plastic) otherwise Excellent; (6).

**Estimate:** £50-70



**Lot No. 1205**

Bluebird Polly Pocket vintage playsets x 10 including: (1) Sparkling Mermaid Adventure 1995, (2) Petal Village 1997, (3) Beach House 1993, with x 2 figures, (4) Fruit Surprise Strawberry 2000, (5,6,7) Snow Mountain 1996 x 2 (on one of them the latch is broken), (8) Shetland Pony Stable 1995, (9) Jewelled Palace with x 2 figures 1992, (10) Pocket Holiday Fun 1996, majority of sets are missing figures, unchecked for completeness or correctness, Good to Good Plus; (10).

**Estimate:** £50-70



**Lot No. 1206**

Polly Pocket group including: Blue Bird Snow White and the Seven dwarfs house playset with 2 figures, Blue Bird Beauty and the Beast, Sparkle Apartment House, Fashion Polly Pocket, plus others, unchecked for completeness or correctness, Good to Good Plus; (Qty).

**Estimate:** £20-30



**Lot No. 1207**

MGA Bratz doll pair including: (1) Bratz Boyz The Rock It! Cade doll & (2) Bratz Dynamite! Meygan doll, both within Good Plus packaging (some items are loose within box), otherwise Excellent; (2).

**Estimate:** £60-80



**Lot No. 1208**

MGA Bratz doll pair including: (1) Bratz Play Sportz Italy Football Meygan & (2) Bratz Plays Sportz Snow Boarding Lilee, both within Good Plus packaging (some items are loose within box), otherwise Excellent; (2).

**Estimate:** £60-80



**Lot No. 1209**

MGA Bratz doll pair including: (1) Bratz Ice Champions Vinessa & (2) Bratz Ice Champions Dana, both within Good Plus packaging (some items are loose within box), otherwise Excellent; (2).

**Estimate:** £60-80



**Lot No. 1210**

MGA Bratz doll trio including: (1) Bratz Hippie Chic Dana, (2) Bratz Pretty 'N' Punk Phone Booth, (3) Bratz Babyz Ponyz Pursia, all within Good to Good Plus packaging (some items are loose within box), otherwise Excellent; (3).

**Estimate:** £60-80





**Lot No. 1211**

MGA Bratz group of dressed dolls x24 including: Forever Diamondz Sasha, Sharidan, Yasmin, Blind Date Maygan, Nevra, Wild Life Safari Yasmin, Fianna, plus others, 2001 dolls & re-releases, all dolls are dressed & come with shoes, unchecked for completeness or correctness, condition varies Good to Excellent; (24).

**Estimate:** £60-80



**Lot No. 1212**

MGA Bratz group of dressed dolls x24 including: Pixiez Sasha, Jade, Cloe dolls, talking Cloe with base, Welcome to Fabulous Tiana, Wild wild west Cloe, plus others, 2001 dolls & re-releases, majority of dolls are dressed & but some dolls are missing shoes -see photo, unchecked for completeness or correctness, condition varies Good to Excellent; (24).

**Estimate:** £60-80



**Lot No. 1213**

MGA Bratz Boyz doll group x22 plus others including: Tokyo A Go-Go (2004) Cameron, Dylan, Motorcycle Style Koby & motorbike, Sun-Kissed Summer (2003), Funk Out (2004), plus others, dolls & re-releases, majority of dolls are dressed & some dolls are missing shoes -see photo, unchecked for completeness or correctness, condition varies Good to Excellent; (22).

**Estimate:** £50-70



**Lot No. 1214**

MGA Bratz group of loose/undressed dolls x15 & clothing & accessories, includes 2001 dolls & re-releases, unchecked for completeness or correctness, condition varies from Good to Good Plus; (Qty).

**Estimate:** £50-70



**Lot No. 1215**

Charlie Bear Antiquity, SJ 6146A, LE 22/300, blonde and coral mohair, swing label certificate, canvas bag, Excellent to Excellent Plus, 14"/36cm.

**Estimate:** £80-100



**Lot No. 1216**

Charlie Bears Isabelle Collection Nippy teddy bear, SJ 5923, LE 91/350, from The Mad Hatter series, mohair, swing label certificate, carry bag, Excellent to Excellent Plus; 18"/46cm.

**Estimate:** £120-160



**Lot No. 1217**

Charlie Bears Pair including: (1) Hakatan, CB 181809A, blue plush, swing label, 15"/38cm; (2) Dimples, CB202043B, brown plush, swing labels, 15"/38.5cm; Excellent to Excellent Plus; (2).

**Estimate:** £50-70



**Lot No. 1218**

Charlie Bears Peyton, CB 151508, grey plush, swing labels, Excellent to Excellent Plus, 23"/58cm.

**Estimate:** £40-60



**Lot No. 1219**

Charlie Bears Soda Pop, CB202040B, purple plush, swing label, Excellent to Excellent Plus, 18"/46cm.

**Estimate:** £50-70



**Lot No. 1220**

Charlie Bears teddy bear pair including: (1) Shani, CB171711, designed by Isabelle Lee, with swing tag, 9.5"/50cm, (2) Advent, CB161664, plush, swing label, 20"/51cm, both Excellent to Excellent Plus; (2).

**Estimate:** £60-80



**Lot No. 1221**

Charlie Bears pair, including: (1) Bumbleberry Pie, CB222215A, pink and purple plush, 15"/38cm; (2) Strudel, CB 202008A, cinnamon plush, swing label, 17"/43cm; Excellent to Excellent Plus; (2).

**Estimate:** £60-80



**Lot No. 1222**

Charlie Bears Trio including: (1) Teacake, CB181826B, blonde plush, swing label, 13"/33cm; (2) Judy, CB161680, cream and brown plush, swing label, 14"/36cm; (3) Rascal, CB201951, cream and brown plush, swing labels, 13"/33cm, Excellent to Excellent Plus; (3).

**Estimate:** £60-80



**Lot No. 1223**

Charlie Bears Sneffels teddy bear, CB202021, LE 146/600, designed by Isabelle Lee and Charlie, specially produced for the 2019 Collectors Club, grey plush, with swing label certificate, Good Plus to Excellent; 16"/41cm.

**Estimate:** £70-90



**Lot No. 1224**

Charlie Bears Plumo teddy bear pair including: (1) Nick teddy bear, CB202013A, Plumo ("Plumo" means plush with mohair/alpaca accents), swing label certificate, 19"/48cm, (2) Higgs, CB171743, 2017, with swing label certificate, 17.5"/44cm, both Excellent to Excellent Plus; (2).

**Estimate:** £60-80



**Lot No. 1225**

Charlie Bears Panda teddy bear pair including: (1) Lyndsey Plumo panda bear (plumo means plush with mohair/alpaca accents), CB212095A, LE 3000, swing label, 23"/59cm, (2) Dominique, CB212121B, designed by Isabelle Lee, plush, swing labels, 14"/36cm, both Excellent to Excellent Plus; (2).

**Estimate:** £60-80



**Lot No. 1226**

Charlie Bears Merengue, SJ 5429, LE 285/350, Isabelle Collection, green mohair, swing label certificate (discoloured), carry bag, Excellent to Excellent Plus; 14"/36cm.

**Estimate:** £100-140



**Lot No. 1227**

Charlie Bears teddy bear trio including: (1) Sergio, CB161505S, plush, with swing label, 15"/38cm, (2) Hinckley, CB161514O, plush, with swing label, 14.5"/37cm, (3) Tia, CB1615070, plush, swing label, 15"/38cm, all Excellent; (3).

**Estimate:** £60-80



**Lot No. 1228**

Charlie Bears pair including: (1) Martin, CB161641, white tipped plush, with swing label, 18"/46cm; (2) Kiya, CB 131305, brown tipped plush, swing label, 15"/38cm; Excellent to Excellent Plus; (2).

**Estimate:** £50-70



**Lot No. 1229**

Charlie Bears Trio including: (1) Hob Nob, CB 161611, cream and ginger plush, swing labels, 17"/43cm; (2) Chatterbox, CB171847, grey tipped brown plush, swing label, 13"/33cm; (3) Pipsie CB171724, golden tipped plush, swing label, 11"/28cm; Excellent to Excellent Plus; (3).

**Estimate:** £60-80



**Lot No. 1230**

Charlie Bears Lachlan, CB202003B, grey & cream plush, swing labels, Excellent to Excellent Plus; 23"/58cm.

**Estimate:** £50-70



**Lot No. 1231**

Charlie Bears Group including: (1) Karl, CB 181812A, brown and white plush, swing label, 18"/46cm; (2) Anniversary Kojak, CB 161707, brown plush, swing labels, 14"/36cm; (3) Sniffle chinchilla, CB 151591, grey plush, swing label, 12"/30cm; (4) Narna's chimp, CB171766, dark brown plush, with swing label, 14.5"/37cm; Excellent to Excellent Plus; (4).

**Estimate:** £60-80



**Lot No. 1232**

Charlie Bears Group including: (1) Chillblaine polar bear, CB181811, white plush, swing label, 16"/41cm; (2) Anniversary Lewis, CB 151565, cream and grey plush, swing labels, 12"/30cm; (3) Pander, CB 228011O, black tipped white plush, swing labels, 14"/36cm; (4) Birthday Bear 2019, CB192060, white plush teddy produced for Charlie Bears 14th Birthday, LE 2000, swing label certificate, 15.5"/40cm; Excellent to Excellent Plus; (4).

**Estimate:** £60-80



**Lot No. 1233**

Charlie Bears teddy bear pair including: (1) Lulu, CB 191972B, plumo (plumo means plush with mohair/alpaca accents), swing labels, 18.5"/47cm, (2) Gingerbread Ted, CB161612, plush, swing label, 18"/46cm, both Excellent; (2).

**Estimate:** £60-80



**Lot No. 1234**

Charlie Bears Tundra arctic fox, BB214100, white plush, swing label, Excellent Plus; 18"/46cm.

**Estimate:** £60-80





**Lot No. 1235**

Charlie Bears Hurley teddy bear, CB191930, plush, swing label, Excellent to Excellent Plus; 24"/61cm.

**Estimate:** £40-60



**Lot No. 1236**

Charlie Bears Crumples, SJ 5817, LE 300, brown with blonde tip mohair, swing label certificate, canvas bag, Excellent to Excellent Plus, 12.5"/32cm.

**Estimate:** £60-80



**Lot No. 1237**

Charlie Bears Dapper, SJ 5947, LE 275, purple and pink string mohair, swing label certificate, canvas bag, Excellent to Excellent Plus, 12"/31cm.

**Estimate:** £60-100



**Lot No. 1238**

Charlie Bears Isabelle Collection Daydreamer teddy bear, SJ 5459, 2016, LE 330 of 450, designed by Isabelle Lee, purple and pink long pile curly mohair, with swing label certificate, carry bag, Excellent to Excellent Plus; 14"/36cm.

**Estimate:** £60-80



**Lot No. 1239**

Charlie Bears Tennison, SJ 5811, LE 400, mohair, swing label certificate, canvas bag, Excellent to Excellent Plus, 20"/51cm.

**Estimate:** £80-100



**Lot No. 1240**

Charlie Bears Lug'oles, SJ 5615, LE 350, dark brown mohair, swing label certificate, canvas bag, Excellent to Excellent Plus, 20"/51cm.

**Estimate:** £120-140



**Lot No. 1241**

Charlie Bears Isabelle Collection Marshall panda bear, SJ 5815B, 2018, LE 188 of 300, designed by Isabelle Lee, green/grey and beige mohair with dark alpaca ears and eye sockets, with swing label certificate, canvas bag, Excellent to Excellent Plus; 15"/38cm.

**Estimate:** £120-140



**Lot No. 1242**

Charlie Bears pair including: (1) Pamper, CB 181817B, brown plush, swing label, 15"/38cm; (2) Molly Coddle, CB 181817A, mauve plush, swing labels, 16"/41cm; Excellent to Excellent Plus, (2).

**Estimate:** £60-80



**Lot No. 1243**

Charlie Bears Isabelle Collection Seeker Meerkat, designed by Isabelle Lee, SJ 5384, LE 400, mohair, MISSING swing label certificate, a little dusty otherwise Excellent; 12"/27cm.  
**Estimate:** £50-70



**Lot No. 1244**

Steiff pair including: (1) Petsy, yellow tag 012440, plush, chest tag, 10"/26cm; (2) Coca cola polar bear, plush, swing label, within Good Plus box, 7"/18.5cm; Good to Good Plus; (2).  
**Estimate:** £20-40



**Lot No. 1245**

Steiff Dollyland Jolly Golly and Bear Set, 1996, LE 1500, white tag 654428, felt and mohair, certificate, still retained within Good Plus box (some foxing), Good Plus to Excellent, 9.5"/24cm and 13.25"/35cm.  
 Please Note: These items are listed on the basis they are illustrative of a bygone culture in which there were different social norms. We understand the potential controversy surrounding this type of item but believe that providing transparent information about historical context fosters greater understanding of our complex cultural history.  
**Estimate:** £50-70



**Lot No. 1246**

Kaycee Bears Bourbon Rabbit, artist designed by Kelsey Cunningham, LE8/30, dark brown plush, swing label certificate; a little dusty otherwise Good Plus to Excellent; 11"/28.5cm.  
**Estimate:** £40-60



**Lot No. 1247**

Charlie Bears pair including: (1) Jimbob teddy bear, CB131354, plush, swing labels (faded), 19"/48cm; (2) Chase chipmunk, CB 151590, plush, swing label, 12"/30cm; Good Plus; (2).  
**Estimate:** £60-80



**Lot No. 1248**

Steiff Sweep (from Harry Corbett's Sooty Show), white tag 664410, LE 154/2000, grey and black mohair, with squeaker, swing tag, and certificate, Good Plus to Excellent Plus, within Excellent box; 12"/30cm.  
**Estimate:** £140-180



**Lot No. 1249**

Steiff Picnic Girl, white tag 021527, LE 1000, cream mohair, certificate, within Good Plus box, Excellent Plus to Near Mint, 9.5"/24cm.  
**Estimate:** £60-80



**Lot No. 1250**

Steiff Musical Romantic Bear, white tag 673764, mohair, internal music box plays "My Way" (untested), certificate, within Good Plus box with outer trade carton, Excellent Plus, 12"/31cm.  
**Estimate:** £50-70



**Lot No. 1251**

Steiff Soo Panda (from Harry Corbett's Sooty Show), white tag 664106, limited edition of 2000 exclusive to the UK and Ireland, black and white mohair Panda wearing printed pink cotton pinafore, includes swing label, certificate, Excellent to Near Mint, within Good Plus to Excellent box; 12"/30cm.

**Estimate:** £200-300



**Lot No. 1252**

Steiff Ferdinand Teddy Bear, white tag 036941, LE 1000, light brown mohair, with chest tag, certificate, within Good box with outer trade carton, Excellent Plus, 24.5"/62cm.

**Estimate:** £100-140



**Lot No. 1253**

Steiff Sooty (Harry Corbett's Sooty Show), white tag 663932, LE 2000, 2011, apricot and black mohair teddy bear, includes certificate, Excellent to Near Mint, within Excellent box; 12"/30cm.

**Estimate:** £100-140



**Lot No. 1254**

Vintage mixed doll group including: teenage dolls, costume dolls; plus others; Good; (8).

**Estimate:** £5-10



**Lot No. 1255**

Sylvanian Families figures and playsets including: Willow Hall, Country Tree School, Boutique shop, Squirrel Family, Rabbit Family, Cat Family, furniture, accessories, plus others, Good to Good Plus; (Qty).

**Estimate:** £50-70

**Total Number of Lots: 601**