

Auction E102
Model Trains - Online Auction - Day 1 on 29 October 2025



Lot No. 1

Bachmann OO Gauge large group of 33x unboxed Private Owner Wagons (see photo). Conditions are Good to Excellent (some cleaning required).

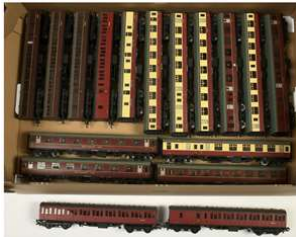
Estimate: £60-80



Lot No. 2

Hornby & Bachmann large group of 20x unboxed BR (SR) Coaches and NPCPS Vans (see photo). Conditions are Good to Excellent (some cleaning required).

Estimate: £80-100



Lot No. 3

Bachmann OO Gauge group of 17x BR Mk1 Coaches (see photo). Conditions are Good to Excellent (some cleaning required).

Estimate: £70-90



Lot No. 4

Bachmann OO Gauge group of 5x unboxed Mk1 Pullman Coaches with Lights to include Ref. 39-290 First Parlour Car "Emerald" plus others (see photo). Conditions are generally Good to Excellent (some cleaning required).

Estimate: £60-80



Lot No. 5

Bachmann OO Gauge unboxed Ref. 31-426 BR (SR) Green 4-Cep (Class 414) EMU No. 7126. Condition is generally Good Plus (some cleaning required).

Estimate: £60-80



Lot No. 6

Bachmann OO Gauge group of 3x BR (ER) Steam Locomotives to Include Ref. TMC 282 BR Lined Green A1 No. 60159 "Bonnie Dundee" produced by The Model Centre plus others (see photo). Conditions are Generally Excellent in Fair to Good boxes (Please note boxes are marked from storage).

Estimate: £60-80



Lot No. 7

Bachmann OO Gauge group of 3x Steam Locomotives to include Ref. 32-155 Southern Railway Malachite Green Maunsell N Class 2-6-0 No. 1864 plus others (see photo). Conditions are Generally Excellent in Good boxes.

Estimate: £60-80



Lot No. 8

Bachmann OO Gauge 32-462 Strathclyde PTE Maroon and Cream Livery 3-car Class 170 Turbostar DMU No. 170470. Condition is generally Good to Excellent in Fair to Good box and outer sleeve (some marks on box and outer sleeve due to storage).

Estimate: £50-70



Lot No. 9

Bachmann OO Gauge 30-600 Virgin Trains Class 220 Virgin Voyager DEMU Train Set containing 3-Car Class 220 DMU along with a controller and wall mounted transformer. Condition is Good (track is missing otherwise unchecked for completeness) in Excellent box.

Estimate: £40-60



Lot No. 10

Bachmann Spectrum On30 Gauge reference 25662 2-Truck Shay Locomotive in Colorado Mining Co livery. Conditions: Generally Excellent to Excellent Plus in Mostly Good box

Estimate: £50-70



Lot No. 11

Bachmann Spectrum Narrow Gauge On30 Porter Locomotives - with 25599 0-4-2 Porter black livery Steam Loco, loco is painted but unlettered & 25561 in Midwest Quarry & Mining Co livery. Conditions: Generally Good Plus to Excellent Plus in Mostly Good boxes.

Estimate: £80-100



Lot No. 12

Bachmann OO Gauge 31-760NRM GNR Green Gresley C1 Atlantic 4-4-2 No. 251. Produced exclusively for the National Railway Museum. Condition is Excellent Plus in Good box and outer sleeve. Some fading to box and outer sleeve.

Estimate: £80-100



Lot No. 13

Bachmann OO Gauge pair of BR (ER) Steam Locomotives comprising Ref. 31-002 2-8-0 Black Robinson O4 No. 63635 & Ref. 32-551DS 4-6-2 Green Peppercorn A1 No. 60139 "Sea Eagle". Conditions are generally Good Plus to Excellent in Good boxes and outer sleeve. Some fading and are to boxes and outer sleeves.

Estimate: £100-120



Lot No. 14

Bachmann OO Gauge pair of BR(MR) Green Steam Locomotives comprising Ref. 31-177DS 4-6-0 Jubilee No. 45596 "Kolhapur" & Ref. 31-213DS 4-6-0 Patriot No. 45504 "Royal Signals". Conditions are generally Good Plus to Excellent in Good boxes and outer sleeves. Some fading and are to boxes and outer sleeves.

Estimate: £120-140



Lot No. 15

Bachmann OO Gauge 32-942SF 2-car Class 150/2 DMU (Sprinter) in BR Provincial, Sound Fitted. Condition is Near Mint in Excellent Plus boxes and outer box.

Estimate: £100-120



Lot No. 16

Bachmann Branchline OO Pair of Steam Locomotives comprising, 31-726 City Class 4-4-0 No. 3433 "City of Bath" (missing one nameplate and 31-089 Earl Class 4-4-0 No. 3214 (missing one crankpin). Conditions are generally Good Plus to Excellent.

Estimate: £70-80



Lot No. 17

Hornby (China) group of 3x LMS Coronation Scot Blue and Silver Liveried Stanier 50' Coaches with Lights to include R40054 Restaurant Kitchen Car No. 30085 plus others (see photo). Conditions are Near Mint in Excellent boxes.

Estimate: £80-100



Lot No. 18

Hornby (China) group of 3x LMS Coronation Scot Blue and Silver Liveried Stanier 50' Coaches with Lights to include R40054A Restaurant Kitchen Car No. 30089 plus others (see photo). Conditions are Near Mint in Excellent boxes.

Estimate: £80-100



Lot No. 19

Hornby (China) pair of LMS Princess Coronation Class 4-6-2 Locomotives comprising R2206 Coronation Scot Blue and Silver No. 6220 "Coronation" & R2270 LMS Wartime Black No. 6241 "City of Edinburgh". Conditions are Good to Excellent in Good boxes.

Estimate: £60-80



Lot No. 20

Hornby (China) and Bachmann pair of Steam Locomotives comprising, Hornby R2249 LMS Class 8F 2-8-0 No. 8042 (Weathered) and Bachmann 32-206 57xx Class 0-6-0PT No. 8715 in Great Western livery (has been fitted with Kadee couplings). Conditions are Good Plus to Excellent (see photo).

Estimate: £70-80



Lot No. 21

Hornby (China) and (GB) OO Trio of Steam Locomotives to include, R3166 GWR Star Class 4-6-0 No. 4018 "Knight of the Grand Cross" and R3170 Railroad GWR Hall Class 4-6-0 No. 4901 "Adderley Hall" plus R830 tender drive Saint for spares or repair. Conditions are generally Good to Excellent

Estimate: £50-60



Lot No. 22

Hornby (China) and similar group of GWR Coaches, to include; Collett corridor stock and Kitmaster Mk1's. Conditions are Fair to Good Plus (some repairs required). See photo. (8)

Estimate: £40-50



Lot No. 23

Hornby (China) group of 5x unboxed LNER 61' 6" Gresley Teak Coaches to include R4829A Corridor Buffet No. 21608 plus others (see photo). Conditions are Generally Good to Excellent (please note some small items missing from bogies).

Estimate: £60-80



Lot No. 24

Hornby (China) group of 6x BR(SR) Lined Green Rebuilt Bulleid Pacific's (see photo). Conditions are Generally Good to Excellent. Please note two Locomotives are missing one smoke deflector each and some cleaning is required.

Estimate: £70-90

Auction E102
Model Trains - Online Auction - Day 1 on 29 October 2025



Lot No. 25

Hornby (China) pair of Southern Railway Steam Locomotives comprising R3327 Urie S15 No. 824 & R2343 Bullied Q1 No. C8 Conditions are Good Plus to Excellent in Good boxes (some fading on boxes).
Estimate: £40-60



Lot No. 26

Hornby (China) pair of BR Green Re-built Bullied Merchant Navy Pacific Locomotives comprising R2294 No. 35029 "Ellerman Lines" & Ref. TMC68 (Limited Edition) No. 35030 "Elder Dempster Line" - No. 25 of 250 produced complete with certificate. Conditions are Good to Excellent in Fair to Good boxes and outer sleeve (some damage and strange ware to boxes and outer sleeve).
Estimate: £60-80



Lot No. 27

Hornby (China) R2350 Network Southeast Class 50 Locomotives No. 50045 "Achilles". Condition is Good Plus to Excellent in Good box and outer sleeve.
Estimate: £40-60



Lot No. 28

Hornby (China) R2485 (Live Steam) 4-6-2 LNER green A3 Class Loco No.4472 "Flying Scotsman" with gloves, various tools plus operators manual. still manufacturer wrapped with loco still in tissue, Appears unused, in Mint condition, with box base with polystyrene inserts.
Estimate: £180-200



Lot No. 29

Hornby (China) R2990XS 4-6-2 BR Maroon Princess Royal Class Locomotive No. 46208 "Princess Helena Victoria" with Digital Sound. Condition is Excellent in Good box and outer sleeve. Fading to box and outer sleeve due to storage.
Estimate: £80-100



Lot No. 30

Hornby (China) R2896XS 4-6-2 BR Green A4 Class Locomotive No. 60001 "Sir Ronald Matthews" with Digital Sound. Condition is Excellent in Good box and outer sleeve. Fading to box and outer sleeve due to storage.
Estimate: £80-100



Lot No. 31

Hornby (China) R2896XS 4-6-2 LNER Blue A4 Class Locomotive No. 4466 "Herring Gull" with Digital Sound. Condition is Good to Excellent in Good box and outer sleeve. Fading to box and outer sleeve due to storage.
Estimate: £80-100



Lot No. 32

Hornby (China) R2990XS 4-6-2 BR Black Stanier 5MT Class Locomotive No. 45377 with Digital Sound. Condition is Excellent in Good box and outer sleeve. Fading to box and outer sleeve due to storage.
Estimate: £80-100



Lot No. 33

Hornby (China) R2894XS 4-6-2 BR Maroon Princess Coronation Class Locomotive No. 46240 "City of Coventry" with Digital Sound. Condition is Excellent in Good box and outer sleeve. Fading to box and outer sleeve due to storage.

Estimate: £80-100



Lot No. 34

Hornby (China) R2989XS 4-6-2 LMS Crimson Princess Coronation Class Locomotive No. 6232 "Duchess of Montrose" with Digital Sound. Condition is Excellent in Good box and outer sleeve. Fading to box and outer sleeve due to storage.

Estimate: £80-100



Lot No. 35

Hornby (China) R3603TTS 4-6-0 BR Green Lord Nelson Class Locomotive No. 30850 "Lord Nelson" with TTS Sound. Condition is Excellent in Good box and outer sleeve.

Estimate: £90-110



Lot No. 36

Hornby (China) R2990XS 4-4-0 BR Black Class V "Schools" Locomotive No. 30909 "St Pauls" with Digital Sound. Condition is Excellent in Good box and outer sleeve. Box affected due to storage.

Estimate: £80-100



Lot No. 37

Hornby (China) R3382TTS 4-6-0 BR Green Merchant Navy (Air Smoothed) Class Locomotive No. 35023 "Holland-Afrika Line" with TTS Sound. Condition is Excellent in Good box and outer sleeve.

Estimate: £90-110



Lot No. 38

Hornby (China) R3244TTS 4-6-2 BR Green Standard 8P Class Locomotive No. 71000 "Duke of Gloucester" with TTS Sound. Condition is Excellent in Good box and outer sleeve. Box and sleeve faded due to storage.

Estimate: £80-100



Lot No. 39

Hornby (China) R3370TTS 4-6-0 BR Express Blue King Class Locomotive No. 6021 "King Richard II" with TTS Sound. Condition is Excellent in Good box and outer sleeve. Box and outer sleeve affected due to storage.

Estimate: £80-100



Lot No. 40

Hornby (China) R2991XS 4-6-2 BR Express Blue A4 Class Locomotive No. 60018 "Sparrow Hawk" with Digital Sound. Condition is Excellent in Good box and outer sleeve. Fading to box and outer sleeve due to storage.

Estimate: £80-100



Lot No. 41

Hornby (China) R3603TTS 2-8-2 LNER Green P2 Class Locomotive No. 2001 "Nock O The North" with TTS Sound. Condition is Excellent in Good box and outer sleeve. Please note some fading to outer sleeve.

Estimate: £80-100



Lot No. 42

Hornby (China) R2782XS 4-6-2 BR Green Princess Coronation Class Locomotive No. 46249 "City of Sheffield" with Digital Sound. Condition is Excellent in Good box and outer sleeve. Fading to box and outer sleeve due to storage.

Estimate: £80-100



Lot No. 43

Hornby Railroad R3284TTS 4-6-2 LNER Green A1 Class Locomotive No. 4472 "Flying Scotsman" with TTS Sound. Conditions are Good to Excellent in Good box and outer sleeve. Fading to box and outer sleeve due to storage.

Estimate: £70-90



Lot No. 44

Hornby (China) group of 5x LNER Teak Gresley 61ft 6in Coaches to include R4174A 1st Class Sleeper Coach No. 1149 plus others (see photo). Conditions are Good to Excellent in Good boxes. Fading to boxes due to storage.

Estimate: £80-100



Lot No. 45

Hornby (China) group of 3x BR Crimson Gresley Suburban Coaches to include R4519 1st Class No. E 81025 E plus others (see photo). Conditions are Good to Excellent in Good boxes. Fading to boxes due to storage.

Estimate: £40-60



Lot No. 46

Hornby (China) group of 6x Southern Railway Olive Green Maunsell Coaches to include R4301D Passenger Brake Van C No. 441 plus others (see photo). Conditions are Good to Excellent in Good boxes. Fading to boxes due to storage.

Estimate: £70-90



Lot No. 47

Hornby (China) group of 6x BR Gresley 61ft 6in Coaches to include R4264B BR Maroon 1st Class Sleeper Coach No. E 1237 E plus others (see photo). Conditions are Good to Excellent in Good boxes. Fading to boxes due to storage.

Estimate: £70-90



Lot No. 48

Hornby (China) group of 5x BR Carmine & Cream Hawksworth Coaches to include R4404 Passenger Brake No. W 298 W plus others (see photo). Conditions are Good to Excellent in Good boxes. Fading to boxes due to storage.

Estimate: £60-80



Lot No. 49

Hornby (China) group of 5x BR Maunsell Coaches to include R4348A Carmine & Cream Brake Composite No. S 6642 S plus others (see photo). Conditions are Good to Excellent in Good boxes. Fading to boxes due to storage.

Estimate: £50-70



Lot No. 50

Hornby (China) group of 6x Pullman Brown and Umber Coaches to include R4437 Pullman Observation Car plus others (see photo). Conditions are Good to Excellent in Good boxes. Fading to boxes due to storage.

Estimate: £100-120



Lot No. 51

Hornby (China) and Similar mixed group of Boxed and unboxed items to include 3x R.62376 Plank Wagons No. 2 "S J Moreland & Sons" Plus others (see photo). Please Note Station Building, Signal Box, Water tower and signal box boxes are empty. Conditions are Fair to Good in Good boxes. Please note cleaning is required, some boxes are missing card inserts, one Locomotive is missing traction tyres, several boxes contain others transfers.

Estimate: £20-30



Lot No. 52

Hornby (GB) Flying Scotsman Set and Operating Ore wagon sets - Appear to be incomplete, Unchecked for completeness. Conditions: Fair to Good in Fair to Good Boxes.

Estimate: £50-70



Lot No. 53

Hornby (GB) group of 6x Steam and Diesel Locomotives to include R.886 Scotrail Class 4/7 No. 47 711 "Greyfriars Bobby" plus others (see photo). Conditions are generally Good to Excellent in Poor to Good boxes.

Estimate: £70-90



Lot No. 54

Hornby and similar OO set track track group, to include; Approx 17 points, plus straights and curves. Conditions are Generally Good. See photo.

Estimate: £40-50



Lot No. 55

Hornby (GB) unboxed Intercity 225 Train including a Class 91 Electric Locomotive, DVT & 7x Mk4 Coaches. Conditions are Good to Excellent (some cleaning required).

Estimate: £50-70



Lot No. 56

Hornby (GB) group of 30x Southern Railway Coaches and NPCS (see photo). Conditions are Good to Excellent (some cleaning required).

Estimate: £80-100



Lot No. 57

Hornby (GB) of 8x LMS Royal Scot Blue & Silver Coaches (see photo). Conditions are generally Good to Excellent with some cleaning required).

Estimate: £60-80



Lot No. 58

Hornby (GB) group of 5x LNER Express Locomotives to include 3x Gresley A4 Pacific's LNER Three Tone Grey No. 2509 "Silver Link", LNER Green No. 4482 "Golden Eagle & LNER Garter Blue No. 4468 "Mallard". Conditions are Good to Good Plus with some cleaning required.

Estimate: £50-70



Lot No. 59

Hornby (GB) R2033 "The Royal Scot" Train Pack containing 1x LMS Crimson Princess Royal 4-6-2 Locomotive No. 6208 "Princess Helena Victoria" and 3x LMS Crimson Stainer Coaches. Condition is Excellent Plus in Good box in sender's box.

Estimate: £50-70



Lot No. 60

Hornby (GB) R459 (Limited Edition) LMS Black Princess Coronation Class 4-6-2 No. 6253 "City of St Albans" No. 859 of 3000 produced and complete with certificate and Royal Doulton Commemorative Plate. Conditions are Excellent to Excellent Plus in Good box and senders box. Please note some storage damage to box.

Estimate: £30-50



Lot No. 61

Hornby pair of Zero 1 Controllers, one boxed and one unboxed. Conditions are Good to Good Plus (unchecked for completeness or correctness) in Fair box.

Estimate: £20-30



Lot No. 62

Heljan and Hornby OO pair of 2-8-0 GWR Steam Locomotives consisting of, Heljan 4781 47xx Class 'Night Owl' No. 4705 Great Western plain green and Hornby R2916 28xx No. 2812 GWR shirtbutton plain green. Conditions are generally Good Plus to Excellent (4705 has detached front buffer) see photo.

Estimate: £70-80



Lot No. 63

Piko HO Gauge Lima & Similar German Military style Locomotives and Carriages. Conditions: Generally Fair to Good Plus, with Good Box for one loco.

Estimate: £70-90



Lot No. 64

Lima OO Gauge group of 8x unboxed BR Scottish Region Diesel Locomotives to include Scotrail Liveried Class 47/7 No. 47 711 "Greyfriars Bobby" plus others (see photo). Conditions are Generally Good to Excellent.

Estimate: £70-90

Auction E102
Model Trains - Online Auction - Day 1 on 29 October 2025



Lot No. 65

Lima OO Gauge Boxed Train Pack and Diesel Locomotive comprising Ref. L204702A8 (Limited Edition) BR Blue Class 55 Deltic No. 55021 "Argyll & Sutherland Highlander" no. 57 of 500 produced complete with Certificate & Separate Etched name plate and Ref. L149624 GNER HST Train Pack consisting of 1x Power Class 43 Unit No. 43108 "Old Course St Andrews", 1x Class 43 Dummy Car No. 43105 "City of Inverness" and 2x Mk3 Coaches. Conditions are generally Good to Excellent in Good boxes (some ware from storage on boxes).

Estimate: £60-80



Lot No. 66

Lima (Modified) O Gauge 2-Rail Finescale 0-6-0 LMS Black Fowler 4F. Chassis appears to be built from a Kit or Scratchbuilt to a Finescale Standard. Condition is generally Good to Good Plus but noted as having an electrical fault.

Estimate: £60-80



Lot No. 67

Hornby (GB), Dapol and Similar OO Gauge group of 6x LMS Locomotives to include Hornby (GB) R061 Lined Black Stanier Black 5 4-6-0 No. 5112 plus others (see photo). Conditions are generally Good to Excellent in Fair to Good boxes.

Estimate: £80-100



Lot No. 68

Hornby (China & GB) and Lima OO Gauge group of 12x Mk1 Coaches and GUVs to include Hornby (China) R6355 Rail Express System Liveried GUV plus others (see photo). Conditions are generally Good to Excellent in Good boxes (some boxes are damage and faded).

Estimate: £80-100



Lot No. 69

Hornby (China & GB) group of 13x LMS Coaches to include Hornby (China) R4218 Coronation Blue and Silver Stanier 1st Brake Coach plus others (see photos). Conditions are Good to Excellent in Good to Good Plus boxes.

Estimate: £80-100



Lot No. 70

Hornby (GB & China), Mainline and Similar group of 14x Wagons and 1x Wagon Pack to include Hornby (China) R6482 LWB Open Wagon Triple Pack plus others (see photo). Conditions are Good to Excellent in Good to Good Plus boxes.

Estimate: £60-80



Lot No. 71

Hornby (GB & China), Wrenn and Similar group of 15x Wagons to include Hornby (China) R6568 6 Wheeled Tanker Wagon No.40 "Oakbank Oil & Co Ltd" plus others (see photo). Conditions are Good to Excellent in Good to Good Plus boxes.

Estimate: £60-80



Lot No. 72

Hornby (GB & China) & Tri-ang Hornby group of 1x Train Pack & 2x Locomotives all in Caledonian Railway Livery to include Hornby (China) R2610 "The Caledonian" Train Pack including 1x Caledonian Single Locomotive, and 2x Coaches - this is a Limited Edition of 838 of 3000 produced and includes certificate plus others (see photo). Conditions are Good to Good Plus in Good to Good Plus boxes.

Estimate: £60-80



Lot No. 73

Hornby (GB) and Hornby Tri-ang group of 3x Boxed Sets and Lineside Items to include Hornby Tri-ang R.161 Operating Hopper Car Set plus others (see photo). Conditions are generally Good to Excellent in Good boxes (some ware and slight damage to boxes).

Estimate: £60-80



Lot No. 74

Hornby (GB & China) Train Set and Train Pack comprising of Hornby (China) R1039 Flying Scotsman Train Set and Hornby (GB) R336 BR Blue and Grey Class 43 Train Pack. Conditions are Good to Good Plus in Fair boxes (please note some damage and fading to boxes).

Estimate: £50-70



Lot No. 75

OO Group of London Transport/Metropolitan Locomotives and Tube Stock, to include; Heljan Bo-Bo No.19, 0-6-2T and 4-4-0 Steam Locomotives, plus others (see photo). Conditions are Fair to Good (some requiring repairs or completion), unchecked for completeness.

Estimate: £90-100



Lot No. 76

Hornby (China), Dapol and Similar OO Gauge group of boxed Wagons and Coaches to include Hornby (China) R4108 GWR Chocolate and Cream TPO No.848 plus others (see photo) Conditions are Good to Excellent in Good to Good Plus boxes.

Estimate: £20-30



Lot No. 77

Hornby group of 4x boxed Steam Locomotives to include Ref. TMC152 Princess Coronation Class 4-6-2 No. 46224 "Princess Alexandra" Limited Edition produced for Trafford Model Centre no 6 of 250 produced and complete with certificate plus others (see photo). Condition's are Good to Excellent in Good boxes.

Estimate: £70-90



Lot No. 78

Hornby-Dublo and Similar large group of boxes Wagons Coaches and Lineside Items top include Hornby-Dublo Ref. 4620 Breakdown Crane plus others (see photo). Conditions are Good to Excellent (unchecked for completeness or correctness) in Good boxes.

Estimate: £60-80



Lot No. 79

Mainline OO Gauge & Similar items - with four Crimson/Cream BR Coaches, 37089 Leander Jubilee Class in BR Green plus H&M Duette Controller and other items. Conditions: Generally Good Plus to Excellent Plus in Mostly Excellent boxes plus unboxed items.

Estimate: £80-100

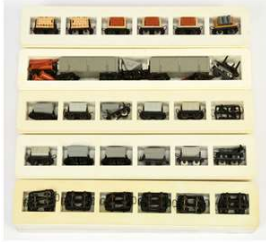


Lot No. 80

Minitrains N Gauge Continental outline 1601 HFB Freight/Hospital set with a 0-8-0 Tank Industrial Loco Grey, Bogie flat trucks, Bogie low sided and a Bogie Coach in Grey with Red Crosses to both sides.

Estimate: £100-120

Auction E102 Model Trains - Online Auction - Day 1 on 29 October 2025



Lot No. 81

Minitrains HOe/OO9 Wagon packs - Assortment of hoppers and flatbed wagons Plus others. Please Note, some have been regauged for 6.5mm track. Conditions: Generally Good to Good Plus in Mostly Good cases.

Estimate: £60-80



Lot No. 82

Minitrains HOe/OO9 Wagon packs - Assortment of hoppers and flatbed wagons Plus others. Please Note, some have been regauged for 6.5mm track. Conditions: Generally Good to Good Plus in Mostly Good cases.

Estimate: £60-80



Lot No. 83

Minitrains HOe/OO9 Wagon packs - Assortment of hoppers and flatbed wagons Plus others. Please Note, some have been regauged for 6.5mm track. Conditions: Generally Good to Good Plus in Mostly Good cases.

Estimate: £60-80



Lot No. 84

Roco HOe/OO9 Narrow Gauge Locomotives - with VT133 525, Bemo 4100 and unbranded Centre cab inspired diesel shunter with a bachmann (Kader) class 08 outside frame mechanism. Conditions: Appears Good Plus to Excellent Plus in Fair to Good packaging.

Estimate: £80-100



Lot No. 85

Roco HOe Narrow Gauge 33234 0-6-0 Loco and Tender Nicki & Frank S blue and black. Conditions: Fair to Good, coupling rod on one side needs replacing.

Estimate: £50-70



Lot No. 86

Egger-Bahn OO9/HOe Narrow Gauge Wagons - Large group of hoppers and vans with most hoppers being Decauville. Conditions: Fair to Excellent Plus.

Estimate: £70-90



Lot No. 87

Backwoods OO9 Narrow Gauge & Similar Locomotive kits - with Chivers Finelines RC71, Meridian Models MM15 Motor Rail Simplex Plus others. All are unchecked for completeness. Conditions: Assumed Good Plus to Excellent Plus in Good Packaging.

Estimate: £80-100



Lot No. 88

Panier HOe Gauge 1250/09 HOe Rendsburg District Railway Railcar kit - Appears to have been partially started with a motor fitted. Appears to be mostly complete but unchecked for completeness with a number of bags with lost-wax castings. This kit appears to be discontinued. Conditions: Generally Excellent to Excellent Plus in Excellent box.

Estimate: £70-90



Lot No. 89

Duton Productions N-6.5/HOf Narrow Gauge White metal Locomotive kits - with a pair of 41501 - "Brigade" locomotives, unchecked for completeness, one does come with a marklin Z Gauge chassis. Conditions: Assumed Good Plus to Excellent Plus in Good boxes.

Estimate: £50-70



Lot No. 90

Egger-Bahn HOe Gauge Minitrains & Similar - With Two Train packs, unchecked for completeness, four Artitec items, one Minitrains HFB Tank in Grey plus other items. Conditions: Fair to Near Mint in Fair to Near Mint packaging.

Estimate: £70-100



Lot No. 91

Toma Model Works HOn 6.5 Gauge Locomotive kits - with two 0331 Welltank kits, unchecked for completeness but motors are included. Conditions: Generally Excellent Plus to Near Mint in Excellent Plus boxes.

Estimate: £50-70



Lot No. 92

Bemo HOe Gauge Etch Kits & Similar - to include BEMO HOe B1007, Unchecked for completeness but contains motor & motion parts, Meridian Models German Feldbahn Water Tender Fret Plus others.

Conditions: Generally Assumed Good Plus to Excellent Plus in Good Plus packaging.

Estimate: £70-100



Lot No. 93

Mixed Group of Narrow Gauge related items - to include HOn3 Mine train set Weinert Modellbau Neintentender No 4036 plus other Spares Repairs and component parts. Conditions: Fair to Good Plus, Kits Unchecked for completeness.

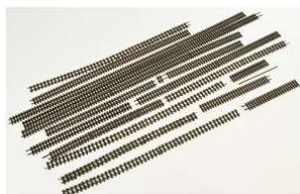
Estimate: £70-100



Lot No. 94

Jouef HOe/OO9 Locomotives & Rolling Stock - to include Minitrains 5116 Crane Car, two sets of 5112's Ambulance van plus various Locomotives including Roco CO-CO in OBB livery. Conditions: Fair to Excellent in Fair to Excellent packaging.

Estimate: £80-100



Lot No. 95

Peco OO9/HOe Flexitrack - to include some track by Pilz (tiling). Conditions: Mostly in a used or tarnished condition, Poor to Fair in a Fair box.

Estimate: £30-50



Lot No. 96

Liliput & Bemo HOe/OO9 Narrow Gauge German style coaches - to include 314503 OBB Livery plus various Bemo Coaches. Conditions: Generally Fair to Excellent Plus in Fair to Excellent packaging.

Estimate: £80-100

Auction E102

Model Trains - Online Auction - Day 1 on 29 October 2025



Lot No. 97

Egger-Bahn HOe/OO9 Narrow Gauge Bemo & similar rolling stock - a variety of Mostly German Hoppers & Vans both boxed & unboxed. Conditions: Generally Good to Excellent Plus in Fair to Good packaging, some cases are not originals.

Estimate: £70-90



Lot No. 98

Tilling HO/HOe or Similar Track plus Loose Peco rail code 75 Bullhead rails. Conditions: Generally Fair to Good.

Estimate: £50-70



Lot No. 99

Roco HOe Narrow Gauge 33267 Mh.3, of the Salzburger Lokalbahn (SLB). Conditions: Appears Good Plus to Excellent Plus in Good Plus box.

Estimate: £70-90



Lot No. 100

Roco HOe Narrow Gauge 33230 0-6-0 DR black livery Class 99 Loco and Tender No.994652. Conditions: Excellent Plus in Excellent Plus box.

Estimate: £60-80



Lot No. 101

Egger-bahn (Jouef) HOe Narrow Gauge Trio of 815500 Ardent Elias Locomotives - Two are Mint and Factory wrapped, one is unwrapped but Near Mint to Mint in Fair to Good box.

Estimate: £60-80



Lot No. 102

Egger-Bahn (Jouef) HOe Narrow Gauge Train sets - with 711100 Quarry set and 711300 Passenger set. Unchecked for completeness. Conditions: Assumed Excellent to Excellent Plus in Generally Good boxes.

Estimate: £70-90



Lot No. 103

OO9 Narrow Gauge Lynton & Barnstaple Rolling stock group - By Parkside Dundas & Nine Lines to include DM15s, NL25s plus others. Conditions: Assumed Mint in Excellent packets.

Estimate: £80-100



Lot No. 104

Vale of Rheidol & Glyn Valley OO9 Narrow Gauge Rolling Stock - By Parkside Dundas to include DM42, DM28 Plus many others. Conditions: Near Mint to Mint in Excellent packs.

Estimate: £70-90



Lot No. 105

Parkside Dundas OO9 Narrow Gauge Ffestiniog Railway Rolling stock - to include DM25 Steel Sided Slate Wagons, DM59 coaches, DM56 (Pack of 5 wagons) packs plus many others. Conditions: Mint in Generally Excellent packets.

Estimate: £70-90



Lot No. 106

Meridian Models OO9 Narrow Gauge Penrhyn Quarry Railway kits - with MPM6 De Winton Slate Wagons, MPM10 Coal Wagons circa 1856 and three MPM11 Sample Packs. Conditions: Mint in Excellent packets.

Estimate: £60-80



Lot No. 107

Nine Lines Welshpool & Llanfair OO9 Narrow Gauge Rolling stock packs - to include NL 11 (3 pack), NL6 Cattle Wagon (3 pack) Plus others. Conditions: Unchecked for completeness. Conditions: Assumed Excellent to Excellent Plus in Good Packaging.

Estimate: £70-90



Lot No. 108

Jouef HOe/OO9 Narrow Gauge Liliput & Similar items - to include seven 'Toast Rack' Coaches plus a locomotive and other items. Conditions: Generally Good Plus to Excellent Plus in Good to Good Plus packaging.

Estimate: £80-100



Lot No. 109

Parkside Dundas OO9 Narrow Gauge Nine Lines Rolling Stock - large group of assorted Freelance & Similar wagons to include DM21 W.W.1 Bogie Wagon chassis, Hudson V tipper (pack of 5) Plus many other items. Generally Near Mint to Mint in Excellent Plus packaging.

Estimate: £80-100



Lot No. 110

Parkside Dundas OO9 Narrow Gauge Meridian Models & Similar - with various railway systems to include Snail Beach district, Talylyn (Ex-Corris) & various Colin Ashby freelance rolling stock. Unchecked for completeness. Conditions: Appears Near Mint to Mint in Excellent Plus packets.

Estimate: £70-90



Lot No. 111

Peco OO9/HOe Narrow Gauge SL-400 Flexitrack boxed. Conditions: Factory Sealed so assumed Mint in Near Mint to Mint box.

Estimate: £60-80



Lot No. 112

Peco OO9 Narrow Gauge Points & Flexi sections - with 18x SL-E492 L/H Turnouts (with a quantity of 'X' marked boxes), 11 SL-E491 R/H Turnouts (with a quantity of 'X' marked boxes) and 6x Y Turnouts SL-E497 (with a quantity of 'X' marked boxes). Plus a quantity SL400X Flexi track plus other items of N Gauge track Conditions: Generally N Gauge track is Generally Fair, OO9 is Near mint to mint with many points still being wrapped.

Estimate: £70-90



Lot No. 113

Chivers Finelines OO9 Narrow Gauge GEM & Similar White Metal Kits - to include Chivers Finelines RC29X Freelance Peckett, GEM Bagnall Plus Graham Farish 8129 HST type two axle drive bogie, Plus other items. Unchecked for completeness. Conditions: Generally Excellent to Excellent Plus in mostly Good Plus packaging.

Estimate: £80-100



Lot No. 114

Parkside Dundas & Similar OO9 Narrow Gauge white metal loco kits - with Welshpool & Llanfair Light Railway Hunslet Tank loco, Roxey Mouldings Lok3 Hampton & Golden Arrow S&K Kerr Stuart examples. These are unchecked for completeness. Conditions: Assumed Excellent Plus to Near Mint in Good Plus packaging.

Estimate: £60-80



Lot No. 115

Chivers Finelines OO9 Narrow Gauge White metal locomotive kits - with RC35 Talylyn Sir Haydn Plus others. Unchecked for completeness. Conditions: Assumed Excellent Plus to Near Mint in Excellent packaging.

Estimate: £80-100



Lot No. 116

Minitrains HOe Narrow Gauge Set 5064 - with eight hopper wagons and one Locomotive in Union Railroad Livery. Conditions: Excellent Plus to Near Mint in Excellent Box.

Estimate: £70-90



Lot No. 117

Chivers Finelines OO9 Narrow Gauge & Similar White metal Locomotive kits - with RC23 C&M Chevalier, RC25 Freelance Hudson Hunslet Diesel plus Vale of Rheidol. Unchecked for completeness. Conditions: Generally Excellent Plus to Near Mint in Excellent packaging.

Estimate: £70-90



Lot No. 118

Chivers Finelines OO9 Narrow Gauge & Golden Arrow White metal kits - with NL7 Beyer Garrett, & RC38 Large Quarry Hunslets. Unchecked for completeness. Conditions: Assumed Excellent Plus to Near Mint.

Estimate: £70-90



Lot No. 119

Parkside Dundas OO9 Narrow Gauge & Chivers Finelines Locomotive kits - to include Ffestiniog Blanche, Rodney Stenning Sir Haydn plus other items. Unchecked for completeness. Conditions: Assumed Excellent Plus to Near Mint in Excellent packaging.

Estimate: £80-100



Lot No. 120

Parkside Dundas OO9 Narrow Gauge & Chivers Finelines White metal Locomotive kits - with RC12 Sittingbourne & Kemsley, Penrhyn Railway Blanche and Welshpool & Llanfair Hunslet. Unchecked for completeness. Conditions: Assumed Excellent Plus to Near Mint in Excellent packaging.

Estimate: £60-80



Lot No. 121

Roger Chivers OO9 Narrow Gauge & Similar White metal kits - to include RC11 T&D, RC10 Avonside Elidir Plus other items. Unchecked for completeness. Conditions: Assumed Excellent Plus to Near Mint in Excellent packaging.

Estimate: £60-80



Lot No. 122

Minitrains HOe Narrow Gauge Locomotives - with 5020 Undecorated & 5022 in Island Coal Creek No12 Livery. Conditions: Excellent Plus to Near Mint in Excellent Plus to Near Mint boxes.

Estimate: £60-80



Lot No. 123

Meridian Models OO9 Narrow Gauge & Similar White metal locomotive kits - with Talyllyn Fletcher Jennings Plus other kits. Unchecked for completeness. Conditions: Assumed Excellent Plus to Near Mint in Excellent Packaging.

Estimate: £70-90



Lot No. 124

Roco HOe Narrow Gauge & Liliput Locomotives - with Liliput 705-U43 Class U43 of the StLB Plus others. Conditions: Generally Excellent to Excellent Plus in Good Plus to Excellent packaging.

Estimate: £60-80



Lot No. 125

Liliput HOe/OO9 Narrow Gauge Locomotives - Assortment of Kitbuilt and RTR Locomotives with British outline and Continental stock. Conditions: Generally Good Plus to Excellent Plus with Good Plus packaging where relevant.

Estimate: £100-120



Lot No. 126

Marklin Z Gauge Track and accessories - to include partial section of flexi track, some crossings, pointwork and a signal, plus Noch road signs. Conditions: Poor to Good Plus with Good Packaging.

Estimate: £40-50



Lot No. 127

Marklin Z Gauge Wagons - to include 4x 8619, 8700 plus others. Conditions: Appears Excellent to Excellent Plus in Excellent cases.

Estimate: £50-70



Lot No. 128

Marklin Z Gauge Items - Assortment of Spares Repairs chassis, bodies and bogies. Conditions: Generally Fair.

Estimate: £60-80



Lot No. 129

Marklin Z Gauge Locomotives - with 8827 Class 41 220 & 8884 050082-7 (Please Note this has an incorrect tender). Conditions: Generally Good Plus to Excellent Plus in Good Plus boxes.

Estimate: £80-100



Lot No. 130

Marklin Z Gauge Locomotives - with 8701 Class 99 006 & 8727 Class 41 220. Conditions: Generally Good Plus to Excellent in Good Plus cases.

Estimate: £70-90



Lot No. 131

Marklin Z Gauge Locomotives - with 8883 Class 052 580-8 & 8885 Class 41 220. Conditions: Appears Excellent Plus to Near Mint in Fair to Excellent boxes.

Estimate: £80-100



Lot No. 132

Marklin Z Gauge & Micro Trains - with 14003 New York Central 1710 & 8802 Track Cleaning car. Conditions: Appears Good Plus to Excellent Plus in Good Plus to Excellent Packaging.

Estimate: £70-90



Lot No. 133

N Gauge Model Railway - Continuous Run Layout. Measures 3ft by 2ft by 1ft 1/2 inch. Points are Wire-in-tube operated, Powered by one Gaugemaster Combi Controller, no Transformer Supplied. All Untested. Conditions: Mostly Good, some buildings have suffered travel damage. COLLECTION ONLY.

Estimate: £5-10



Lot No. 134

Kato N Gauge Unitrack items - with two WX 310 Scissor crossings (wires cut close to track base) assorted points and curved track, some equipped for risers. Conditions: Mostly Good to Excellent Plus.

Estimate: £80-100



Lot No. 135

TGW Tsugawa N Gauge Power Chassis group - with two 14053 TU-DB158 units & 14046 TU-9A chassis. Conditions: Assumed Mint to Mint in Excellent Plus to Near Mint cases.

Estimate: £50-70



Lot No. 136

Model Power N Gauge Peco & Similar Trackwork - with assorted points, crossings & similar items. Most loose items are used. Conditions: Fair to Excellent Plus in Good Plus packaging where relevant.

Estimate: £50-70

Auction E102
Model Trains - Online Auction - Day 1 on 29 October 2025



Lot No. 137

Arnold N Gauge Roco & Similar - group of 16 Continental & Similar wagons to include tomix 2735, Liliput L364550 Plus others. Conditions: Generally Good to Excellent Plus in Fair to Excellent packaging.
Estimate: £60-80



Lot No. 138

Fleischmann N Gauge & Similar Wagons Plus UK Outline coach - with 22 hopper style wagons plus others. Conditions: Generally Good Plus to Excellent.
Estimate: £50-70



Lot No. 139

Arnold N Gauge Minitrix & Similar Locomotives group - to include E Lok 23274, 2272 class 78 142 of the DR Plus others. Conditions: Mostly Good Plus to Excellent Plus in Fair to Excellent packaging.
Estimate: £100-120



Lot No. 140

Bachmann N Gauge Trix & Similar Spares/Repair chassis and axle parts assortment. Conditions: Poor to Fair in Fair packaging where relevant.
Estimate: £40-60



Lot No. 141

Rivarossi N Gauge German & US Outline Locomotives - with 2015 Jackshaft locomotive 265 004-02 of the DB, Rivarossi 2185 shortline locomotive of the B&O Railroad plus others. Conditions: Generally Good to Excellent in Poor to Fair cases.
Estimate: £80-100



Lot No. 142

Fleischmann N Gauge Kato & Similar Locomotives Plus other items - to include trix track vacuum, Kato 14-071 tram plus others. Conditions: Appears Good Plus to Excellent Plus in Fair to Excellent cases.
Estimate: £100-120



Lot No. 143

Eheim N Scale Trolley Busses - with three Brawa branded busses with one with Monochrome markings, the other two with red/green, one is a dark teal colour. Conditions: Fair to Good.
Estimate: £50-70



Lot No. 144

Atlas, Brawa and Similar N Gauge group of items including Track, Buildings Kits, Accessories and Similar to include Atlas Ref. #2790 Manually Operated Turntable plus others (see photo). Conditions are Poor to Good in Fair to Good boxes.
Estimate: £40-60

Auction E102
Model Trains - Online Auction - Day 1 on 29 October 2025



Lot No. 145

N Gauge or Similar Continental scenery items - to include some premade scatter terrain sheets, assorted buildings and vehicles. Conditions: Fair to Good
Estimate: £10-20



Lot No. 146

Roco N Gauge & Similar German and French outline Locomotives and stock - to include DB Class 144 and ET90 Class electrics plus others. Conditions: From Good to Excellent in Good boxes and cases.
Estimate: £60-70



Lot No. 147

Bachmann N Scale US Locomotives - with four 51570 Prairie 2-6-2 & Tender locomotives in New York Central livery. Conditions: Vary from Good to Excellent Plus in Excellent Boxes. One tenders bogies are missing axles.
Estimate: £80-100



Lot No. 148

Bachmann N Gauge Graham Farish & Similar Locomotives - with two Bachmann Plymouth Shunters, Farish 9400 Class Pannier Tank Plus others. Conditions: Generally Excellent to Excellent Plus in Good Plus to Excellent Plus packaging.
Estimate: £80-100



Lot No. 149

Minitrix N Gauge Bachmann & Similar Locomotives - with 47160, in wrong box, Dockside switcher of the Baltimore & Ohio railroad Plus other UK and Continental stock. Conditions: Fair to Good in Good Boxes.
Estimate: £60-80



Lot No. 150

Graham Farish (Poole and China) Trio of Diesel Locos Plus Multiple Unit. 371-008 Class 08 13029 in BR Black Unboxed. 1005 Class 08 D4019 BR Green Wasp Stripes Unboxed. 8067 Class 31 31 421 "Wigan Pier" Regional Railways (In Minitrix Box, Missing 1 Coupling) and 8133 Class 101 2-Car DMU in BR Green SYP Boxed (Missing Couplings). Conditions: Generally Good to Good Plus.
Estimate: £80-100



Lot No. 151

Marklin HO Scale 3-Rail group of 3x items to include Ref. 3065 Class V60 No. V60 1009, Ref. 3016 VT795 Railbus and Ref. 4018 Railbus Trailer. Conditions are Excellent to Excellent Plus in Good boxes (some writing on the boxes and some ware noted.)
Estimate: £50-70



Lot No. 152

Athearn Con-Cor and Similar group of 17x Coaches Cars and unbuilt or part built Coach Car Kits to include Ref. 2072 New Haven RDC-1 Dummy Coach plus others (see photo). Conditions are generally Good to Excellent (unchecked for completeness or correctness) in Good boxes.
Estimate: £20-30



Lot No. 153

Branchline Blueprint Series HO Scale group of 11x built unbuilt Freight and Coach Car Kits to include 2x Ref. 5199 80' Single Window Coach unlettered but painted Green plus others (see photo). Conditions are Good to Excellent with Freight Cars built to a Good standard but items are not checked for completeness or correctness in Good boxes.

Estimate: £20-30



Lot No. 154

Fleischmann HO Gauge Marklin & Similar group of wagons. Conditions: Appears Good Plus to Excellent Plus in mostly Good Plus Cases and boxes.

Estimate: £80-100



Lot No. 155

Faller HO Scale Vollmer & Similar structures and buildings - large assortment of domestic, industrial and lineside items. Conditions: Generally Range from Poor to Fair.

Estimate: £80-100



Lot No. 156

Faller HO Scale Vollmer & Similar structures and buildings - Assortment of domestic, industrial and lineside items. Conditions: Generally Range from Poor to Fair.

Estimate: £60-80



Lot No. 157

Faller HO Gauge Roco & Similar Continental Wagons - An assortment of hoppers, Vans & other items. Conditions: Generally Good Plus to Excellent Plus in Good Plus to Excellent packaging.

Estimate: £70-90



Lot No. 158

Lima HO Gauge Roco & Liliput German Passenger coaches of the DB. with Short and Long wheelbase coaches. Conditions: Generally Good to Excellent in Good Plus packaging.

Estimate: £70-90



Lot No. 159

Roco HO Gauge Marklin & others - Assortment of DB & DR Coaching stock. Conditions: Generally Good Plus to Excellent Plus in Fair to Excellent boxes.

Estimate: £70-90



Lot No. 160

Roco HO Gauge & Similar Locomotives - to include DB V 160 005, BR Class 03 382 Plus other locos. Some are Spares/Repair Conditions: Poor to Good.

Estimate: £70-90



Lot No. 161

Liliput HO Gauge Marklin & Similar Steam Locomotives - to include Liliput No.1 Fireless Locomotive, DB Class 50 493. Conditions: Generally Good to Good Plus.

Estimate: £70-90



Lot No. 162

Roco HO Gauge Lima & Similar Locomotives group - to include V 36 109 in DB Black & red Plus other locomotives. Please Note, the green units are dummy units. Conditions: Generally Good to Good Plus.

Estimate: £50-70



Lot No. 163

Heris HO Gauge & Similar German outline coaching stock - to include 11147, Mitrops & other coaches. Conditions: Generally Good to Excellent Plus in Fair to Good Plus packaging.

Estimate: £70-90



Lot No. 164

Assorted mix of HOm Scale or similar Dummy trams with a continental favour. Conditions: Mostly Fair to Good, in Good Packaging where relevant.

Estimate: £50-70



Lot No. 165

Roco HO Scale Fleischmann & Similar Spares Repairs items - large group of loco chassis and tenders. Conditions: Poor to Fair.

Estimate: £60-80



Lot No. 166

Brekina HO Gauge & Roco Railcars - with 69020 featuring DB VT+VS 98s, plus Beiwagen Schienenbus Plus others. Conditions: Generally Excellent to Near Mint in Good Plus to Near Mint packaging.

Estimate: £100-120



Lot No. 167

Marklin Hamo 2-rail Ref.3829 digital 0-6-6-0 articulated twin pantograph Electric loco DB green No.191099-1, Conditions: Near Mint in Excellent Plus box.

Estimate: £100-120



Lot No. 168

Trix HO Gauge 22215 Turmtriebswagen TVT 6219 Esn of the DB. Conditions: Near Mint to Mint in Excellent box.

Estimate: £90-120

Auction E102 Model Trains - Online Auction - Day 1 on 29 October 2025



Lot No. 169

Rowa HO Gauge & Marklin E Loks - with Rowa 1407 E 91 09 & Marklin 8349 104 021-1 of the DBB. Conditions: Generally Good Plus to Excellent Plus in Good Plus boxes.

Estimate: £100-120



Lot No. 170

Brawa HO Gauge Lenz & Similar Group of small motive units - with V36.413, Brawa NR.0453, Kleinwagen KLV 12 Plus others. Conditions: Generally Excellent to Excellent Plus in Good to Excellent boxes.

Estimate: £100-120



Lot No. 171

Faller HO Scale Slot car road system - with assorted sections of track and crossings plus other items. Conditions: Fair to Good.

Estimate: £50-70



Lot No. 172

Fleischmann HO Gauge Marklin & Similar Wagons - to include two Pocher Snow blower vans, five Marklin Flatbed wagons with side posts to match, plus many others. Conditions: Generally Good to Excellent Plus.

Estimate: £80-100



Lot No. 173

Modell Plus (By Lenz) HO Gauge & others - with V36.413, Brawa ET 65 0770 Plus others. Conditions: Mostly Excellent to Excellent Plus in Fair to Excellent Packaging.

Estimate: £100-120



Lot No. 174

Roco HO Gauge Brawa & Similar Multiple unit style locomotives - to include Brawa 2420 Ci+Ci wu 29 unit, Roco ET90, Piko BR185 Plus others. Conditions: Generally Good to Excellent Plus in Fair to Good Plus boxes.

Estimate: £100-120



Lot No. 175

Roco HO Gauge Coaches plus others - with a rake of of DB liveried coaches, plus trix short wheelbase carriages and one Marklin carriage in an airfix box. Conditions: Generally Good Plus to Excellent Plus in Mostly Excellent Plus packaging.

Estimate: £70-90



Lot No. 176

Roco HO Gauge Coaches - to include Donnerbuschen set 04062 S, three electrotren E3342 RENFE Talgo 3 Cafeteria coach sections. plus others. Conditions: Generally Excellent to Excellent Plus in Excellent boxes.

Estimate: £80-100



Lot No. 177

Kibri HO Scale Artitec & Similar boxed model kits - to include Lighthouse kit 9153, Artitec Guards house 10. 105 Plus many others. Conditions: All are unchecked for completeness and are assumed Near Mint to Mint in Fair to Good Boxes.

Estimate: £80-100



Lot No. 178

Herkat HO Gauge rolling stock cleaning area plus track - to include numerous points, some are hand built Narrow gauge style sections of 16.5mm gauge track, along with a box of Lima track plus other items. Conditions: Generally Fair to Good in Good packaging where relevant.

Estimate: £50-70



Lot No. 179

Roco HO Gauge Liliput & Similar Group of Spares/Repairs parts - with various coach, wagon and locomotive parts. Conditions: Generally Fair to Good.

Estimate: £50-70



Lot No. 180

Jouef HO Roco & Similar Wagons - With Jouef 664 Kangourou pack (Appears Complete) Brawa 2050 Tanker wagon pack plus other items. Conditions: Generally Good Plus to Excellent Plus in Mostly Excellent boxes.

Estimate: £80-100



Lot No. 181

Kibri HO Scale Vollmer Faller & Similar Group of model kits - Mostly of a domestic scenic items & Infrastructure. All are unchecked for completeness. Conditions: Assumed Fair to Good Plus in Fair to Good Plus packaging.

Estimate: £80-100



Lot No. 182

Kleinbahn HO Gauge Faller & Similar Freight stock - with assorted Tankers, Hoppers plus others. Conditions: Generally Good Plus to Excellent Plus in Fair to Good Plus boxes, some have minor crumple damage.

Estimate: £80-100



Lot No. 183

Marklin HO Gauge Wagon Packs - with Nos 2690 & 2890. Please note the Locomotives are not included with these sets. Conditions: Generally Good Plus to Excellent in Good Boxes.

Estimate: £70-90



Lot No. 184

Heljan HO Scale Wiad & Similar Kits and structures - Assortment of built German style dwellings and shops plus other kits. Conditions: Generally Fair to Good.

Estimate: £30-40



Lot No. 185

Trix HO Scale Ref. 22915 4-6-4 Deutsche Reichsbahn Red (Epoch II) BR 05 No. 05 003 with Streamline Casing and DCC Sound Fitted. Condition is Excellent in Good Plus box and outer sleeve.

Estimate: £100-120



Lot No. 186

Märklin 3-Rail AC HO Scale Ref. 37777 Deutsch Reichsbahn Silver (Epoch II) Rail Zeppelin with DCC Sound Fitted. Condition is Excellent in Good box and outer sleeve. Box affected due to storage.

Estimate: £70-90



Lot No. 187

Märklin 3-Rail AC HO Scale Ref. 37015 4-4-4 Royal Bavarian State Railroad Green (Epoch I) S 2/6 Locomotive No. 3201 with DCC Sound Fitted and Presentation Box. Condition is Excellent Plus in Good box and outer sleeve. Box affected due to storage.

Estimate: £100-120



Lot No. 188

Märklin 3-Rail AC HO Scale Ref. 39022 4-6-2 Grand Ducal Baden State Railways Green (Epoch I) Class IVh Locomotive No. 1013 with DCC Sound Fitted. Condition is Excellent Plus in Good box and outer sleeve. Box affected due to storage.

Estimate: £80-100



Lot No. 189

Märklin 3-Rail AC HO Scale pair of Royal Prussian Railway Administration Green (Epoch I) comprising Ref. 39022 4-6-0 Class P8 Locomotive No. 2458 with DCC Fitted & Ref. 37077 4-6-4T BR T18 Locomotive No. 8409 with DCC Sound Fitted. Conditions are Excellent Plus in Good box and outer sleeve. Boxes affected due to storage.

Estimate: £110-130



Lot No. 190

Märklin (150 Year Anniversary) 3-Rail AC HO Scale Ref. 39230 2-6-2 Deutsche Bundesbahn (Epoch III) BR23 Locomotive No. 23 001 with DCC Sound Fitted. Condition is Excellent Plus in Good box and outer sleeve. Box affected due to storage.

Estimate: £70-90



Lot No. 191

Märklin 3-Rail AC HO Scale Ref. 39662 2-4-4T Royal Bavarian State Railways (Epoch I) Class D XII (DRG Class 73) Locomotive No. 2237 with DCC Sound Fitted. Condition is Excellent Plus in Good box and outer sleeve. Box affected due to storage.

Estimate: £70-90



Lot No. 192

Märklin 3-Rail AC HO Scale Ref. 39662 4-6-0 Royal Prussian Railway Administration Green (Epoch I) Class P8 Locomotive No. 2439 with DCC Sound Fitted. Condition is Excellent Plus in Good box and outer sleeve. Box affected due to storage.

Estimate: £80-100



Lot No. 193

Marklin 3-Rail AC HO Scale Ref. 36242 2-6-0 Deutsche Bundesbahn (Epoch III) BR 24 Locomotive No. 24 047 with DCC Sound Fitted. Condition is Excellent Plus in Good box and outer sleeve.

Estimate: £80-100



Lot No. 194

Marklin 3-Rail AC HO Scale Ref. 39550 0-10-0 Bavarian Railways Green (Epoch I) G5/5 Locomotive No. 5856 with DCC Sound Fitted. Condition is Excellent Plus in Good box and outer sleeve. Box affected due to storage.

Estimate: £90-110



Lot No. 195

Marklin 3-Rail AC HO Scale Ref. 39023 4-6-2 Deutsch Reichsbahn & Gesellschaft (DRG) Blue (Epoch II) BR18.3 Locomotive No.18 320 with DCC Sound and Display Plinth. Conditions are Good Plus to Excellent in Good box and outer sleeve.

Estimate: £100-120



Lot No. 196

Marklin 3-Rail AC HO Scale Ref. 37057 2-10-0 Royal Württemberg State Railways (Epoch I) Class K No. 61 001 with DCC Fitted. Condition is Excellent in Good Plus box and outer sleeve. Box affected due to storage.

Estimate: £70-90



Lot No. 197

Marklin 3-Rail AC HO Scale Ref. 37082 4-6-2 Deutsche Bundesbahn (Epoch III) BR10 Locomotive No. 10 001 with DCC Sound Fitted. Condition is Excellent Plus in Good box and outer sleeve. Box affected due to storage.

Estimate: £90-110



Lot No. 198

Marklin 3-Rail AC HO Scale Ref. 34559 0-8-0 Silver BR55 Locomotive No. 2000 with DCC Sound Fitted. Celebrating 10 Years of the Marklin Dealer Initiative (MHI). Condition is Excellent Plus in Good box and outer sleeve. Box affected due to storage.

Estimate: £70-90



Lot No. 199

Marklin 3-Rail AC HO Scale Ref. 37144 0-6-0T Royal Prussian Railway Administration Green (Epoch I) Class T 3 Locomotive No. 6306 with DCC Sound Fitted. Condition is Excellent in Good Plus box and outer sleeve.

Estimate: £60-80



Lot No. 200

Marklin 3-Rail AC HO Scale Ref. 37050 4-6-4 Deutsche Reichsbahn Red (Epoch III) BR 05 No. 05 001 with Streamline Casing and DCC Sound Fitted. Condition is Excellent in Good Plus box and outer sleeve.

Estimate: £90-110



Lot No. 201

Marklin 3-Rail AC HO Scale Ref. 37050 4-6-4T Deutsche Bundesbahn (Epoch III) BR 61 No. 61 001 with Streamline Casing, Display Plinth and DCC Sound Fitted. Condition is Excellent in Good Plus box.

Estimate: £80-100



Lot No. 202

Marklin 3-Rail AC HO Scale Ref. 37911 4-6-2 Deutsche Reichsbahn Red (Epoch II) BR 03.10 No. 031012 with Streamline Casing and DCC Fitted. Condition is Excellent in Good Plus box and outer sleeve.

Estimate: £80-90



Lot No. 203

Marklin 3-Rail AC HO Scale Ref. 39640 2-6-2T Deutsche Bundesbahn (Epoch III) BR 64 Locomotive No. 64 250 with DCC Sound Fitted. Condition is Excellent in Good Plus box and outer sleeve. Box affected due to storage.

Estimate: £60-80



Lot No. 204

Brawa HO Scale group of Prussian (Epoch I) and East German (Epoch III) Coaches to include Ref. 45256 Royal Prussian Railway Administration Green (Epoch I) No. 145 "Hannover" plus others (see photo). Conditions are generally Good to Excellent

Estimate: £60-80



Lot No. 205

Trix HO Scale group of 3x Deutsche Bundesbahn Coach packs comprising 2x Ref. 23312 Commuter Service Car Set and 1x Ref. 21265 "Lorelei" Express Passenger Car Set. Conditions are Good Plus to Excellent in Good boxes (please note boxes have been affected by storage).

Estimate: £60-80



Lot No. 206

Trix HO Scale Ref. 23373 "Blauer Enzian" Passenger Car Set containing 5x Deutsche Bundesbahn (Epoch III) Blue Coaches. Conditions are excellent in Good Plus box.

Estimate: £70-90



Lot No. 207

L.S. Models Exclusive (made my Modern Gala) HO Scale CIWL (Epoch III) Coach pack containing 3x Blue Coaches. Condition is Good to Excellent (unchecked for completeness) in Good box. Please note box is affected by storage.

Estimate: £50-70



Lot No. 208

Rivarossi HO Scale group of Orient Express Blue & Cream Coaches to include Ref. HR4077 Coach Pack with 2x Coaches included plus others (see photo). Conditions are generally Good Plus to Excellent in Good boxes (please note some boxes have been affected due to storage).

Estimate: £60-80



Lot No. 209

Rivarossi HO Scale pair of CIWL Orient Express Blue Train Packs comprising Ref. HR4075 & HR4076 each containing 3x Coaches. Conditions are Excellent Plus in Good boxes (boxes affected by storage).
Estimate: £80-100



Lot No. 210

Brawa HO Scale Ref. 45974 60 Year Anniversary Pack containing 1x Deutsch Reichsbahn 0-10-0 BR94 Locomotives 2x Vans and 3x Coaches plus accessories. Condition is Good Plus to Excellent in Good box (affected due to storage).
Estimate: £110-130



Lot No. 211

Trix HO Scale group of 8x Deutsche Bundesbahn (Epoch III & IV) Coaches to include Ref. 23460 DB Class 2/3 Double Decker Coach No. 35 502 plus others (see photo). Conditions are generally Good Plus to Excellent in Good boxes (some boxes have been affected by storage).
Estimate: £60-80



Lot No. 212

Trix HO Scale group of Deutsche Bundesbahn & Deutsche Reichsbahn (Epoch III) Coaches to include Ref. 24326 Deutsche Reichsbahn Two Coach Pack plus others (see photo) Conditions are generally Good Plus to Excellent in Good box (some boxes affected by storage).
Estimate: £70-90



Lot No. 213

Trix, Marklin and Similar group of boxed wagons to include Trix Ref. 24536 Polish State Railroad (PKP) (Epoch IV) Coal Transport Set containing 5x type Falns High-Capacity Hoppers with Factory Weathering plus others (see photo). Conditions are generally Good to Excellent in Good boxes (some boxes have been affected by storage).
Estimate: £60-80



Lot No. 214

Trix HO Scale large group of boxed and unboxed sectional track to include 3x Ref. 62624 Double Crossing Switch plus others (see photo). Conditions are generally Good to Excellent (unchecked for completeness or correctness) in Good boxes.
Estimate: £80-100



Lot No. 215

Marklin HO Scale 3-Rail AC Large group of boxed sectional Sectional C-Track to include 6x Ref. 24672 Right Hand curved points R1 plus others (see photos). Conditions are generally Good Plus to Excellent (unchecked for completeness or correctness) in Good boxes.
Estimate: £70-90



Lot No. 216

Marklin HO Scale 3-Rail AC Large group of boxed and unboxed sectional Sectional C-Track to include 10x Ref. 24612 Right Hand points R2 plus others (see photos). Conditions are generally Good Plus to Excellent (unchecked for completeness or correctness) in Good boxes.
Estimate: £70-90



Lot No. 217

Marklin HO Scale 3-Rail AC Large group of boxed and unboxed sectional Sectional C-Track to include 11x Ref. 24188 1 plus others (see photos). Conditions are generally Good Plus to Excellent (unchecked for completeness or correctness) in Good boxes.

Estimate: £60-80



Lot No. 218

Fleischmann HO Gauge & Liliput locomotives - with Class 39 031, 38 2609 & 18 451 of the DR and 39149 of the DB. Conditions: Fair to Good with some minor damage to detail parts, in Fair to Good boxes.

Estimate: £80-100



Lot No. 219

Brekina HO Gauge & Fleischmann Railcar stock - with two VT95 & one VB140.7/VB 142 and three 4406. Conditions: Good Plus to Excellent Plus in Fair to Excellent Plus cases.

Estimate: £80-100



Lot No. 220

Fleischmann Track Planning template parts - with a large assortment of straights, curves and crossings. Conditions: Vary from Good Plus to Excellent Plus.

Estimate: £20-30



Lot No. 221

Marklin (Insider Club) 3-Rail AC HO Scale Ref. 39662 4-8-4 Deutsche Reichsbahn (Epoch II) DRB 06 Locomotive No. 06 001 with DCC Sound Fitted. Condition is Excellent Plus in Good box and outer sleeve. Box affected due to storage.

Estimate: £120-140



Lot No. 222

Marklin 3-Rail AC HO Scale Ref. 37043 0-6-0T Deutsche Reichsbahn (Epoch II) BR 80 Locomotive No. 80 034 with DCC Sound Fitted and Telex Couplers. Condition is Excellent in Good Plus box and outer sleeve. Box affected due to storage.

Estimate: £70-90



Lot No. 223

Marklin 3-Rail AC HO Scale Ref. 39205 4-6-2 Deutsche Reichsbahn (Epoch III) Class 05.1 Locomotive No. 05 512 with Boxpok Wheels and DCC Sound Fitted. Condition is Excellent in Good Plus box and outer sleeve. Box affected due to storage.

Estimate: £100-120



Lot No. 224

Fleischmann HO Scale Deutsche Reichsbahn (Epoch II) Passenger Train Pack Containing 1x 4-6-2 BR 03.10 No. 03 1090 with DCC Sound plus 4x Coaches. Condition is Near Mint Good Plus box.

Estimate: £130-150



Lot No. 225

Roco HO Gauge & Liliput German outline Coaching stock with 44 504 marked for Österreich and other DB liveried stock. Conditions: Appears Excellent to Excellent Plus in Good to Excellent boxes.

Estimate: £70-90



Lot No. 226

Marklin HO Gauge Liliput & Similar Wagon stock - to include 4793 Wagon set, L230991 DB Auxiliary Tank Wagon and others. Conditions: Generally Good to Excellent Plus in Good to Excellent Packaging.

Estimate: £80-100



Lot No. 227

Heris HO Gauge Liliput & Similar group of Passenger Coaches - mostly of the DB, Some are Spares/Repairs due to missing or damages axles/bogies. Conditions: Fair to Good.

Estimate: £60-80



Lot No. 228

Liliput HOe Narrow Gauge L170705 OBB green livery Class 2091 Centre Cab Diesel Loco. Conditions: Excellent to Excellent Plus in Excellent Box.

Estimate: £80-100



Lot No. 229

Liliput HOe Narrow Gauge L141491 - ZB No.5 "Gerlos". Conditions: Excellent to Excellent Plus in Good Plus to Excellent box.

Estimate: £80-100



Lot No. 230

Hornby (China) R2897XS 4-6-0 BR Green Castle Class Locomotive No. 4098 "Kidwelly Castle" with Digital Sound. Condition is Excellent in Good box and outer sleeve. Fading to box and outer sleeve due to storage.

Estimate: £80-100



Lot No. 231

Hornby Dublo Unboxed Group of Coaches and Wagons; Including; Stanier Composite BR Crimson/Cream (Missing Couplings), Restaurant Car BR Crimson/Cream, BR Mk1 CK Green (1 Coupling Missing), Pullman Car 74 Gresley Bogies, 6 x Assorted Wagons inc Brake Van. Conditions Are Fair to Good. Plus EDL12 Duchess of Montrose for Spare or Repairs and D1 Level Crossing Boxed.

Estimate: £10-20



Lot No. 232

Hornby Dublo 2-rail 2050 Suburban Electric Train Set. Condition is Good, in Poor to Fair Box.

Estimate: £60-70



Lot No. 233

Hornby Dublo 2-Rail Unboxed 2235 4-6-2 BR Green "Barnstaple" West Country Class Loco 34005.
Condition: Good to Good Plus.
Estimate: £50-60



Lot No. 234

Hornby Dublo 2 & 3-Rail mixed group of steam locomotives, stock and accessories, to include; Castle (renumbered), D1 Engine shed, carded 5037 Lineside Notices, plus others (see photos). Conditions are generally Good to Excellent in Poor to Fair Packaging (where applicable).
Estimate: £50-60



Lot No. 235

Hornby-Dublo group of 17x unboxed Tank wagons (see photo). Conditions are generally Good to Excellent (unchecked for completeness).
Estimate: £40-50



Lot No. 236

Hornby-Dublo 2 & 3-Rail mixed group of 7x Steam and Diesel outline Locomotives (see photo). Conditions are Good to Excellent with some ware and chipping on paintwork.
Estimate: £70-90



Lot No. 237

Hornby-Dublo group of 25x unboxed BR Coaches (see photo). Conditions are generally Good to Excellent with some chipping and ware to some items (unchecked for completeness).
Estimate: £60-80



Lot No. 238

Hornby-Dublo 2-Rail Ref. 2350 Class 501 Two Car EMU (see photo). This model has been modified with Wrenn Wheel Sets. Conditions are Good to Excellent (unchecked for completeness).
Estimate: £50-70



Lot No. 239

Hornby Dublo 2-Rail pair of Steam Locomotives comprising Ref. 2221 Castle Class No. 4075 "Cardiff Castle" & Ref. 2235 West Country 4-6-2 No. 34005 "Barnstaple". Conditions are generally Good to Excellent (unchecked for completeness) in Fair to Good boxes.
Estimate: £70-90



Lot No. 240

Hornby Dublo 2-Rail pair of Steam Locomotives comprising Ref. 2211 A4 Class 4-6-2 No. 60030 "Golden Fleece" & Ref. 2226 Princess Coronation No. 46245 "City of London". Conditions are generally Good to Excellent (unchecked for completeness) in Fair to Good boxes.
Estimate: £70-90



Lot No. 241

Hornby Dublo 2-Rail group of 3x Diesel Locomotives comprising Ref. 2331 EXPORT 350HP Shunter No. D3302 plus others (see photo). Conditions are generally Good to Excellent (unchecked for completeness) in Fair to Good boxes.

Estimate: £70-90



Lot No. 242

Hornby Dublo 3-rail Locomotives group - with EDL A4 Silver King 60016, L30 Class 20 D8000 LNER Tank Loco 9695 (Centre wheel appears to need requartering and replacement pins) Conditions: Fair to Good.

Estimate: £60-70



Lot No. 243

Hornby Dublo group of plastic Building Kits comprising of 5020 Goods Depot & 5005 Engine Shed. All appear complete. Conditions: Good to Near Mint in Good Plus boxes.

Estimate: £50-70



Lot No. 244

Hornby Dublo 3-rail Assorted group - with D1 Signal Cabin & Foot Bridge, Island Platform plus various wagons and coaches, some track & pointwork. Conditions: Generally Fair to Good Plus in Good Boxes.

Estimate: £80-100



Lot No. 245

Hornby Dublo 3-rail OO Gauge Items - with Duchess of Montrose plus assorted wagons, and a large selection of track and pointwork. Conditions: Fair to Good.

Estimate: £50-70



Lot No. 246

Wrenn OO & Hornby Tinplate items - with Wrenn W2217 Class N2 Tank locomotive 9522 along with a redone A4 Dwight D Eisenhower in BR Green presented in W2210 Mallard Blue box, plus Tinplate O Gauge No.1 Side Tipping wagon in Sir Alfred McAlpine. Conditions: Good Plus to Excellent Plus in Excellent boxes.

Estimate: £50-70



Lot No. 247

Trix Twin OO Gauge unboxed 3- Rail pre-war Ref. 2/540 LMS Crimson Princess Royal Class 4-6-2 No. 6201 "Princess". Condition is Good to Good Plus with some fatigue and chipping to paint work.

Estimate: £80-100



Lot No. 248

Trix Twin OO Gauge 3- Rail Ref. 2/536 LMS Crimson 4-4-0 Compound No. 1168. Conditions is Excellent with some fatigue and wear to paint work in Good box.

Estimate: £60-80



Lot No. 249

Trix Twin group of 3x unboxed 3-Rail 4-4-0 Steam Locomotives (see photo). Conditions are Good to Good Plus.

Estimate: £50-70



Lot No. 250

Trix Twin OO Gauge group of 3x Boxed Ref. 2/536 4-4-0 Compound Locomotives to include BR Lined Green No.62750 plus others (see photo). Conditions are generally Good to Good Plus in Good boxes.

Estimate: £70-90



Lot No. 251

Tri-ang Hornby and similar group of rolling stock, to include; R332 & R333 boxed GWR Clerestory coaches plus others (see photo). Conditions are Generally Poor to Good Plus. in Good boxes.

Estimate: £30-40



Lot No. 252

Triang & Similar mixed group of items to include R45 Turntable Set, R79 Inclined Piers and other items (see photo). Conditions are Fair to Excellent Plus (unchecked for completeness) in Fair to Good Plus boxes.

Estimate: £15-20



Lot No. 253

Rosebud Kitmaster TT Gauge & Tri-ang items - various kitmaster coaches in varied states of assembly plus assorted Tri-ang wagons and chassis parts. Conditions: Generally Fair to Good.

Estimate: £10-20



Lot No. 254

Tri-ang & Hornby (GB) OO Gauge Sets & Items - include R3.M, RS.24, R3A & R0, sets are unchecked for completeness, sets with track have rust on them. Plus other items. Conditions: Poor to Fair in Poor to Good Boxes.

Estimate: £50-70



Lot No. 255

Tri-ang TT Gauge items - with two locomotives and various coaches and wagons. Conditions: Poor to Fair.

Estimate: £40-60



Lot No. 256

Triang Minic Motorways OO/HO Scale group with M1522 Racing Set with original perspex holder, along with assorted track and crossing sections. Conditions: Generally Good Plus to Excellent in Good boxes.

Estimate: £50-70



Lot No. 257

Tri-ang Railways OO Gauge & Similar items - with RS21 set, with Locomotive, Carriages & track, unchecked for completeness, plus Vacuum formed tunnel and other items. Conditions: Generally Good to Good Plus in Good Plus box.

Estimate: £50-70



Lot No. 258

Tri-ang Minic OO/HO Scale empty boxes for sets M.1501 C, M.1521 & M.1506. Conditions: Generally Fair to Good with some damage to corners.

Estimate: £50-70



Lot No. 259

Tri-ang Minic Motorways OO/HO Gauge road track packs - with M1602 packs, M1611 bends Plus others. Conditions: Generally Good Plus to Excellent in Good boxes.

Estimate: £50-70



Lot No. 260

Tri-ang Minic Motorways items - with Fly-over accessory pack, M1814 Motel Chalet & Garage, plus sections of track. Unchecked for completeness. Conditions: Appears Good Plus to Excellent Plus with Good Plus boxes.

Estimate: £50-70



Lot No. 261

Tri-ang Minic Cars Group - to include M1576 Ferrari, M1581 Aston-Martin DB.6 Plus others. Conditions: Generally Excellent to Excellent Plus in Good Plus to Excellent Boxes. Please Note Mercedes is a Spares/Repair item.

Estimate: £50-70



Lot No. 262

Tri-ang OO Gauge & Similar items - with R50 Princess Elizabeth Locomotive with tender, plus assorted wagons and track. Conditions: Generally Fair to Good Plus in Good boxes.

Estimate: £70-90



Lot No. 263

Tri-ang OO Gauge Trans Continental stock - with R.1553 CP Rail Diesel Switcher plus various Coaches and Wagons of the series. Conditions: Generally Excellent to Excellent Plus in Good Plus to Excellent boxes.

Estimate: £80-100



Lot No. 264

Kitbuilt Pair of OO Gauge BR Black Robinson A5 4-6-2T Passenger Tank Engines comprising No. 69835 & No. 69831. Both are finished to a Good Plus Standard. Conditions are generally Good to Excellent.

Estimate: £50-70



Lot No. 265

DJH Kitbuilt OO Gauge BR Lined Black Raven A8 4-6-2 Passenger Tank Locomotive No. 69894. Built to a High Standard. Condition is Good to Excellent with Weathered Finished in Good box.

Estimate: £60-80



Lot No. 266

Kitbuilt OO Gauge Group of 3x BR Lined Green Rebuilt Jubilee Class 4-6-0 Locomotives (see photo). Built to a Good Plus Standard but some repair/completion work required to all models. Condition is generally Good to Good Plus

Estimate: £70-90



Lot No. 267

Superquick, Ratio and Similar OO Gauge group of unbuilt Building and Lineside kits to include Ratio Ref. 504 Station Building plus others (see photo). Conditions are Good to Excellent (unchecked for completeness or correctness) in Good boxes and packaging.

Estimate: £40-50



Lot No. 268

Ratio, Kirk Kits and Similar group of unbuilt and part built Rolling Stock kits and Accessories to include Ratio Ref. 5733 LMS (ex-LNWR) Corridor Brake Composite Coach Kit plus others (see photo). Conditions are Good to Excellent (unchecked for completeness or correctness) in Fair to Good boxes and packaging. (some packaging has been opened).

Estimate: £40-50



Lot No. 269

OO Gauge Kitbuilt Great Western Railway trio of small Steam Locomotives comprising, Metro 2-4-0T No. 459, 517 Class 0-4-2T No. 571 (Mallard Models kit, compensated chassis fitted with RG4 motor and gearbox) and 48xx 0-4-2T No. 4805 (compensated chassis fitted with RG4 motor and gearbox). Conditions are generally Good, constructed and painted to a Good Plus standard.

Estimate: £70-80



Lot No. 270

OO Gauge Kitbuilt Great Western Railway trio of small Steam Locomotives comprising, 1101 Class 0-4-0T Dock Tank (Falcon Brass kit), 1361 Class 0-6-0ST No. 1363 (Agenoria kit) and 2301 Dean goods Class 0-6-0 No. 2431 (K's or Nu-Cast kit fitted with RG4 motor and gearbox). Conditions are Generally Good, constructed and painted to a Good to Good Plus standard.

Estimate: £70-80



Lot No. 271

OO Gauge Kitbuilt Great Western Railway trio of small Steam Locomotives comprising, 633 Class 0-6-0T No. 635 (M & L kit fitted with condensing gear), 645 Class 0-6-0ST No. 651 (M & L kit) and outside framed 0-6-0ST No. 2184 (see photo). Conditions are Generally Good, constructed and painted to a Good to Excellent standard.

Estimate: £70-80



Lot No. 272

OO Gauge quartet of kitbuilt GWR Pannier Tank Locomotives comprising, 57xx Class No. 5700 and 8750 Class No. 9643 (both fitted with RG4 motors and gearboxes, 9643 is compensated) plus others (see photo). Conditions are Generally Good to Excellent, constructed and painted to a Good to Excellent standard.

Estimate: £70-80



Lot No. 273

OO Gauge trio of kitbuilt GWR Large Prairie Steam Locomotives to include, 51xx Class No. 5153 (fitted with RG4 motor and gearbox) and others (see photo). Conditions are generally Good to Good Plus, constructed and painted to a Good to Good Plus standard (one 61xx needs attention to the connecting rod).

Estimate: £70-80



Lot No. 274

OO Gauge Trio of GWR Korean brass and kit built steam locomotives comprising, Samhongsu 57xx Class 0-6-0PT No. 5713, Dong Jin Models 4575 Class 2-6-2T No. 5569 and kitbuilt 4575 Class No. 4588 (with RG4 motor and gearbox & compensated chassis). Conditions are Generally Good to Good Plus, constructed and painted to a Good to Good Plus standard (see photo).

Estimate: £70-80



Lot No. 275

OO Gauge kitbuilt GWR "The Great Bear" pacific Steam locomotive, GWR No. 111 "The Great Bear" kit built from the M & L kit. Constructed and painted to a Good in unlined Green livery (see photo).

Estimate: £70-80



Lot No. 276

OO Gauge mixed group of kitbuilt GWR 'Brown' rolling stock, to include. 6-wheel and 4-wheel Siphon's, fish and fruit Van's, plus others (see photo). Conditions are Good to Excellent.

Estimate: £40-50



Lot No. 277

OO Gauge mixed group of GWR and similar kitbuilt/ modified Goods wagons to include, Cordons, Mite's and others (see photo). Conditions are Fair to Excellent.

Estimate: £70-80



Lot No. 278

OO Gauge E.R.H. Francis GWR brown and cream 40' Full Brake Coach built from the K's kit. Constructed to an Excellent standard, and painted to a Good standard. Condition is Generally Excellent and signed E.R.H. Francis Devon 1970 to the underside.

Estimate: £60-80



Lot No. 279

OO Gauge E.R.H. Francis handbuilt GWR brown and cream 70' Toplight Brake Third Coach. Constructed to an Excellent standard, and painted to a Good standard. Condition is Generally Excellent (some broken Queen posts) and signed E.R.H. Francis Totnes Devon 1969 to the underside.

Estimate: £80-100



Lot No. 280

OO Gauge E.R.H. Francis handbuilt GWR brown and cream Collett All First Coach. Constructed to an Excellent standard, and painted to a Good standard. Condition is Generally Excellent with label handbuilt by E.R.H. Francis Totnes Devon to the underside.

Estimate: £60-80



Lot No. 281

OO Gauge Larry Goddard kitbuilt GWR brown and cream Super Saloon "Princess Elizabeth". Constructed and painted to a Excellent standard. Condition is Generally Excellent (requires cleaning) with "D. Lawrence W. Goddard" to the underside.
Estimate: £60-80



Lot No. 282

OO Gauge Larry Goddard kitbuilt Comet Models GWR brown and cream Collett 'Ocean Mails' Full brake. Constructed and painted to a Excellent standard. Condition is Generally Excellent (requires cleaning) with "D. Lawrence W. Goddard" to the underside.
Estimate: £60-80



Lot No. 283

Exley OO Gauge K5 Midland All 3rd Side Corridor Clerestory Roof Brake End Coach No.7548. Condition is Generally Good to Good Plus (1 bogie needs re-attaching).
Estimate: £60-80



Lot No. 284

Group of OO Gauge Kit Built and Scratchbuilt GWR Short Coaches, comprising; 4 and 6 wheel, plus 40' bogie vehicles. Conditions Are Fair to Good Plus (some repairs required). See photo. (18)
Estimate: £60-80



Lot No. 285

Group of OO Gauge Kit Built, Scratchbuilt and modified RTR GWR Clerestory Coaches, comprising; Non corridor and corridor stock including newspaper sorting van. Conditions Are Fair to Good Plus (some repairs required). See photo. (21)
Estimate: £60-80



Lot No. 286

Group of OO Gauge Kit Built, Scratchbuilt and modified RTR GWR Coaches, comprising; Non corridor and corridor stock including toplights. Conditions Are Fair to Good Plus (some repairs required). See photo. (15)
Estimate: £60-80



Lot No. 287

Group of OO Gauge Kit Built, Scratchbuilt and modified RTR GWR Coaches, comprising; Corridor stock including toplights and 70' stock. Conditions are Fair to Good Plus (some repairs required). See photo. (14).
Estimate: £80-90



Lot No. 288

Group of OO Gauge Kit Built, Scratchbuilt and modified RTR GWR Coaches, comprising; Matchboarded Autococh, Slip Coaches, plus others. Conditions are Fair to Good Plus (some repairs required). See photo. (9).
Estimate: £50-60



Lot No. 289

Group of OO Gauge Kit Built LNER and SR Coaches, to include; LNER Quad-Art set, plus others. Conditions are Fair to Good Plus (some repairs required). See photo. (11).

Estimate: £50-60



Lot No. 290

Group of OO Gauge Kit Built Midland and LMS Coaches, to include; LMS Period 1 steel BTO, plus others. Conditions are Fair to Good Plus (some repairs required). See photo. (11).

Estimate: £40-50



Lot No. 291

OO Gauge kitbuilt GWR outside framed 0-6-0ST Steam Locomotive No. 611. Armstrong or absorbed (possibly broad gauge conversion) 0-6-0ST GWR No. 611, constructed and painted to an Excellent standard from an etched brass/nickel silver kit. Condition is generally Good Plus to Excellent. (See photo).

Estimate: £60-70



Lot No. 292

D&S OO Gauge Great Central Coach kit group, to include; DS 21 First Class Suburban, DS 22 Composite Suburban and 2 x DS 23 Brake Third Suburban. All matchboarded unbuilt. Contents are unchecked for completeness.

Estimate: £80-100



Lot No. 293

D&S OO Gauge Great Central Coach kit group, to include; Great Central Slip Coach and Third Class twin pack (special batch for Expo EM North 1981), DS 24 Corridor Third, DS 25 Corridor First and DS 69/72 GCR-CLC Brake Van. All matchboarded unbuilt. Contents are unchecked for completeness.

Estimate: £80-100



Lot No. 294

OO Gauge group of The Model Shop (Harrow Middlesex) unbuilt Dreadnought Coach kits comprising; 2 x Brake Third, 9 Compartment Third and 7 Compartment First. Conditions are Excellent in Excellent boxes, appear unbuilt but unchecked for completeness.

Estimate: £60-80



Lot No. 295

OO gauge GWR unbuilt Coach group, to include; Haye Developments C24 Dreadnought all Third. Fourmil 40' P.L.V. K2/3 plus others (see photo). Conditions are Generally Excellent in Good Plus to Excellent boxes, appear unbuilt but unchecked for completeness. (6)

Estimate: £60-80



Lot No. 296

OO gauge GWR Coach kit group, to include; Slater's Dean Clerestory (1 part built), K's whitemetal and injection moulded plus others (see photo). Conditions are Generally Excellent in Good Plus to Excellent boxes and packaging, appear mostly unbuilt but unchecked for completeness. (8)

Estimate: £60-80

Auction E102
Model Trains - Online Auction - Day 1 on 29 October 2025



Lot No. 297

D&S Models and Similar OO Gauge group of unbuilt brass and white metal kits to include; D&S GC Cattle Wagons DS63/DS 67x2, DS 64 Fish Van plus Falcon Brass 308 GC 15T Fish Van and Dave Geen E/051GC 17B Goods Van (see photo). Conditions are generally Good Plus to Excellent (unchecked for completeness) in Good Plus packaging.

Estimate: £90-100



Lot No. 298

D&S Models and Similar OO Gauge group of unbuilt white metal and plastic wagon kits to include; D&S Models AA16 GWR Brake Van and Slater's 4P040/1 'Old Roundwood Collieries' plus others (see photo). Conditions are generally Good Plus to Excellent (unchecked for completeness) in Good packaging. (8)

Estimate: £40-50



Lot No. 299

Parkside and Similar group of OO GWR Wagon kits to include; PC44 Bloater x 3, Great Western Wagons Y2 Fruit Van (whitemetal) plus others (see photo). Conditions are Generally Good Plus to Excellent in similar packaging, unchecked for completeness.

Estimate: £50-60



Lot No. 300

OO Gauge Group of Tram and Road Vehicle kits, to include; Keil Kraft and Tower Tram kits, Bachmann Brill Trolley, plus others (see photo). Conditions are Generally Good to Excellent in similar packaging.

Estimate: £20-30



Lot No. 301

Mike's Models, Ratio and similar group of Great Western Buildings and lineside, to include; Mike's Models Yard and Water Cranes, Ratio Carriage and Goods Sheds, plus others (see photo). Conditions are Generally Good Plus to excellent in similar packaging, unchecked for completeness.

Estimate: £40-50



Lot No. 302

Great Central wagon kit and similar group, to include; D&S DS67 GC Cattle Wagon, Model Wagon Co GC 3 plank open x 2, David Geen E/055 GC Dia.12 Van x 2, plus others (see photo). Conditions are Generally Good Plus to Excellent.

Estimate: £40-50



Lot No. 303

Wills & Similar OO Scale kits - Large assortment of new in blister pack kits to include SS30 Barn SS37 Market Stalls and many more items. Conditions: Fair to Mint in Fair to Excellent Plus packets.

Estimate: £70-90



Lot No. 304

Ratio OO Gauge Buildings and other kits - to include Black Horse Inn CK13, twin and single road engine sheds CK12 & CK 14 plus other items. Unchecked for completeness. Conditions: Assumed Excellent to Excellent Plus in Mostly Good Plus boxes.

Estimate: £50-70



Lot No. 305

Peco OO Gauge Dapol & Similar Kits - to include Service Station, Corgi Card Bus station kits plus others. Unchecked for completeness. Conditions: Appears Good Plus to Excellent Plus in Mostly Good packaging.

Estimate: £50-70



Lot No. 306

Heljan HO Scale Kits Dapol, Superquick & Similar - Assortment of Plastic and Card kits. Unchecked for completeness. Conditions: Assumed Excellent to Excellent Plus in Good Packaging.

Estimate: £50-70



Lot No. 307

Wills OO Scale Heljan & Similar Kits - to include Springside Morris Commercial's Parcels van, Dornaplas Terraced House Plus many other items. Unchecked for completeness. Conditions: Assumed Excellent to Excellent Plus in Fair to Good packaging.

Estimate: £40-60



Lot No. 308

Superquick OO Scale Card Kits & Similar - Large assortment to include Country Supermarket & Shop plus many others. Unchecked for completeness. Conditions: Assumed Excellent to Excellent Plus in Good Plus packaging.

Estimate: £40-60



Lot No. 309

Corgi OO Scale Original Omnibus & Similar Card kits - To include Southdown and Midland Plus other kits. Unchecked for completeness. Conditions: Assumed Excellent to Excellent Plus in Mostly Good Plus to Excellent Plus packaging.

Estimate: £40-60



Lot No. 310

Wills OO/HO Scale Preiser & Similar Detailing and kit items - to include Model Scene items, various figures plus other items. Unchecked for completeness. Conditions: Assumed Excellent to Excellent plus in Fair to Good Plus packaging.

Estimate: £40-60



Lot No. 311

Merit OO/HO Scale & Similar Model kits - A general assortment including some resin military vehicles in 1/76th scale Plus many other kits. Unchecked for completeness. Conditions: Mostly Good Plus to Excellent Plus in Fair to Good Plus packaging.

Estimate: £50-70



Lot No. 312

Metcalfe OO Scale Superquick & Similar Card Kits - Assortment of kits and builders sheets with Manor Farm Buildings, GWR Stables Plus other items. Unchecked for completeness. Conditions; Generally Good Plus to Excellent Plus in Mostly Good Plus to Excellent packaging.

Estimate: £60-80



Lot No. 313

Linka OO Scale & Similar Structure casting sets - with an early version, assumed New in Excellent box, plus five other structures kits, some still wrapped. Unchecked for completeness. Conditions: Assumed Near Mint to Mint in Excellent Plus boxes.

Estimate: £50-70



Lot No. 314

Wills OO/HO Gauge Kibri & Similar Kits - to include CK11 Detached Houses, assorted Wiking farm plant equipment plus many other items. Unchecked for completeness. Conditions: Generally Good to Good Plus in Fair to Good packaging.

Estimate: £80-100



Lot No. 315

Hornby O Gauge group of 8x Boxed Wagons to include R166 Hopper Wagon "Sir Robert McAlpine & Sons" plus others (see photo). Conditions are Good Plus to Excellent in Good boxes.

Estimate: £50-60



Lot No. 316

Hornby O Gauge group of 4x Boxed & Unboxed LMS and LNER Coaches include No. 2 LMS Maroon Corridor Brake Composite No.6844 with "London (Euston) & Liverpool (Lime Street)" Destination board plus others (see photo). Conditions are Good to Good Plus in Good boxes.

Estimate: £60-80



Lot No. 317

Hornby O Gauge large group of 3-Rail sectional track sections to include straight sections, curved sections, points and buffer stops (see photo). Conditions are Good to Excellent.

Estimate: £50-60



Lot No. 318

Hornby, Scratchbuilt and Similar O Gauge group of Buildings, Lineside Accessories and Similar to include Hornby Ref. A1010 No. 1 Water Tank plus others (see photo). Conditions are Fair to Good Plus in Good boxes.

Estimate: £50-60



Lot No. 319

Meccano Hornby O Gauge Series Twin Road Engine Shed, missing Track. Condition is Generally Good to Good plus with evidence of wear and rusting.

Estimate: £60-80



Lot No. 320

Hornby O Gauge E320 20 volt 3-Rail electric Great Western Green 4-4-2 Loco & Tender No. 4073 'Caerphilly Castle'. Condition is Good to Excellent with some chipping and wear to paintwork.

Estimate: £100-120



Lot No. 321

Hornby O Gauge E220 20 Volt 3-Rail LMS Crimson 4-4-2 Tank Locomotives No. 2180. Condition is Good to Good Plus with evident signs of ware and chipping. Hand rails are missing too.

Estimate: £90-110



Lot No. 322

Hornby O Gauge large group of 2-Rail Tinplate Track and Buffer Stops (see photo). Conditions are Good to Excellent (unchecked for completeness).

Estimate: £30-50



Lot No. 323

Hornby O Gauge large group of unboxed tinplate Lineside Accessories (see photo). Conditions are Fair to Good Plus (unchecked for completeness).

Estimate: £50-70



Lot No. 324

Hornby O Gauge group of Boxed Clockwork Locomotive, Wagons, Coaches, Lineside Items and Train Set to include Ref. No. 20 Goods Set plus others (see photo). Conditions are generally Good to Excellent (unchecked for completeness or correctness) in Fair to Good boxes.

Estimate: £70-90



Lot No. 325

Hornby O Gauge large group of 21x unboxed wagons (see photo). Conditions are generally Good to Excellent with some chipping and ware to paintwork (unchecked for completeness).

Estimate: £50-70



Lot No. 326

Hornby O Gauge large group of 14x Clockwork Steam Outlined Locomotives and Coaches (see photo). Conditions are Fair to Excellent with ware and chopping to paintwork (unchecked for completeness).

Estimate: £40-60



Lot No. 327

Hornby O Gauge group of 7x Tank Wagons (see photo). Conditions are Good to Excellent (unchecked for completeness).

Estimate: £20-30



Lot No. 328

Hornby O Gauge group of 18x unboxed Wagons (see photo). Conditions are Good to Excellent.

Estimate: £30-40



Lot No. 329

Hornby O group of 3x Southern Railway Lined Green Coaches dating from Circa 1935-1937. Conditions are Good to Good Plus (unchecked for completeness)

Estimate: £60-80



Lot No. 330

Hornby O Gauge tinplate items - to include CA1 Acute angle crossing PR2 Points & other items. Conditions: Generally Excellent to Excellent Plus in Excellent boxes.

Estimate: £50-70



Lot No. 331

Hornby O Gauge Tinplate Signal box & Technic9 Intercity N Gauge style Trainset. Unchecked for completeness. Conditions: Generally Excellent to Excellent Plus.

Estimate: £20-30



Lot No. 332

Bassett-Lowke O 3-Rail Gauge 4-6-2 LMS Maroon Princess Coronation No. 6232 "Duchess of Montrose" along with Wooden Carrying Case. Condition is Good Plus with signs of ware and fatigue to the paintwork and coal as been added to the tender.

Estimate: £340-360



Lot No. 333

Bassett-Lowke O 3-Rail Gauge 2-6-4 LMS Black Stanier 4P Tank No. 2603 along with Wooden Carrying Case. Condition is Good Plus with signs of ware and fatigue to the paintwork and coal as been added to the tender.

Estimate: £240-260



Lot No. 334

PECO O Gauge Items - with four lengths of Flexitrack, one 35XX Great Western Tank locomotive kit, mostly built, includes motor and an assortment of GEM point/signal levers. Conditions: Poor to Fair with Fair packaging.

Estimate: £60-80



Lot No. 335

Peco & Coopercraft O Gauge small group of unbuilt Kit Wagons and accessories to include Coopercraft Ref. 3011 GWR 04 Five Plank Open Wagon with Williams Patent Sheet Rail.

Estimate: £20-30



Lot No. 336

Parkside, Slater's and Similar O Gauge Wagon kits and accessories, to include; Parkside PS39 GWR Container Wagon (H7), Slater's 7054 GWR Cattle Wagon and others (see photo). Conditions are Generally Good to Excellent, unchecked for completeness.

Estimate: £40-50



Lot No. 337

Kitbuilt O Gauge GWR Green 14xx No. 1450, built from a Springside Models to an Excellent Standard (see photo). Conditions are Excellent in Good plus Ellis Clark box.

Estimate: £100-120



Lot No. 338

DJH O Gauge Peppercorn BR Express Blue A1 4-6-2 No. 60161 "North British" presented in an Ellis Clark box. This has been built and finished to a high standard and is powered by a Portescap RG7 Motor. Condition is Good plus with some chipping to paintwork on Smokebox in a Good box.

Estimate: £220-240



Lot No. 339

Kitbuilt O Gauge 2-Rail Finescale 0-6-0 LNER Black Robinson J11 "Pom-Pom" No. 5201. Built from a Gladiator Kit to an Excellent Standard. Condition is Excellent with some minor tarnish to smokebox front.

Estimate: £100-120



Lot No. 340

Kitbuilt O Gauge 2-Rail Finescale 4-4-0 British Railways Green Fowler 2P No. 40563. Built from a Gladiator Kit to an Excellent Standard. Condition is Excellent with some painting to of detail parts to complete.

Estimate: £120-140



Lot No. 341

Kitbuilt O Gauge 2-Rail Finescale 0-8-0 LMS Photographic Grey Fowler 7F "Austin Seven" No. 9643. Built from a Gladiator Kit to an Excellent Standard. Condition is Excellent with some minor chipping to paintwork and some painting to of detail parts to complete.

Estimate: £120-140



Lot No. 342

Kitbuilt O Gauge 2-Rail Finescale 4-4-0 LMS Crimson 4-4-0 Deeley 4P No. 1045. Built from a Slater's Plastikard Kit to an Excellent Standard. Condition is Excellent with some chipping to PaintworkE102308

Estimate: £130-150



Lot No. 343

Kitbuilt O Gauge 2-Rail Finescale 4-6-0 British Railways Black Fowler 6P "Patriot" No. 45541 - unnamed. Built from a Gladiator Kit to an Excellent Standard. Condition is Excellent with slight repairowrk to vlve gear to parts to complete.

Estimate: £120-140



Lot No. 344

Ace Products Part-Built 4-6-2 Gresley Pacific Express Passenger Engine (A1/A10/A3) with High Sided Tender and Slater's Wheels. Condition is Good to Good Plus (unchecked for completeness or correctness) in Good box.

Estimate: £90-110



Lot No. 345

Kitbuilt O Gauge 2-Rail Finescale 0-6-0 LNER Black Gresley J39 No. 4712. Built from a Connoisseur Models Kits to a Good Standard. Condition is generally Good to Good Plus with some paint chipping and minor areas required to complete.

Estimate: £100-120



Lot No. 346

Kitbuilt/Scratchbuilt O Gauge 2-Rail Finescale 4-6-0 LMS Black Stanier 5MT No. 5376. Built from an unknown manufacturer to a Good Standard with some items appearing scratch built. Condition is generally Good to Good Plus with some paint chipping and minor areas required to complete.

Estimate: £90-110



Lot No. 347

Kitbuilt/Scratchbuilt O Gauge 2-Rail Finescale 4-6-0 LMS Black Stanier 5MT No. 5690. Built from a David Andrews Kit to a Good Standard with some items appearing scratch built. Condition is generally Good to Good Plus with some paint chipping and minor areas required to complete and a noted as having an electrical fault.

Estimate: £80-100



Lot No. 348

Kitbuilt O Gauge 2-Rail Finescale 2-6-4 LMS Lined Black Stanier 4P Passenger Tank. Built from an unknown manufacturer's kit to a Good Standard. Condition is generally Good to Good Plus with some paint chipping and minor areas required to complete.

Estimate: £80-100



Lot No. 349

Kitbuilt O Gauge 2-Rail Finescale 4-4-0 BR Green Class V Schools Locomotives No. 30926 "Repton". Built from an Northstar Designs kit to a Good Standard. Condition is generally Good to Good Plus with some paint chipping.

Estimate: £100-120



Lot No. 350

Kitbuilt /Scratchbuilt O Gauge 2-Rail Finescale LMS Black 0-6-0 2F Tank Locomotives No. 58856. Built from an unknown kit or scratch built to a Good Standard. Condition is Good to Good Plus.

Estimate: £60-80



Lot No. 351

Kitbuilt O Gauge 2-Rail Finescale 4-6-2 BR Maroon 7P Princess Coronation Class No. 46247 "City of Liverpool". Built from a Gladiator Kit to an Good Standard and Fitted with an RG7 Motor. Condition is Good to Good Plus with some minor chipping to paintwork and some painting to of detail parts to complete.

Estimate: £120-140



Lot No. 352

Kitbuilt /Scratchbuilt O Gauge 2-Rail Finescale Black 0-4-4 Tank Locomotives resembling an NER BTP (G6) Tank Locomotive. Built from an unknown kit or scratch built to a Good Standard. Condition is Good to Good Plus.

Estimate: £60-80



Lot No. 353

Kitbuilt O Gauge Finescale Private Owner Orange 0-4-0ST Andrew Barclay 14" No. 78. Built from a DJH kit to a High Standard. Condition is Good Plus.

Estimate: £50-70



Lot No. 354

Kitbuilt /Scratchbuilt O Gauge 2-Rail Finescale BR Green 0-4-4 M7 Tank Locomotives No. 30245. Built from an unknown kit to a Fair Standard. Condition is Good but Cab Roof is missing.

Estimate: £50-70



Lot No. 355

Heljan O Gauge Ref. 3748 Colas Rail Freight Class 37/4 No. 37421. Condition is Good Plus with some minor damage to one buffer beam socket in Good Plus box and senders box.

Estimate: £180-200



Lot No. 356

Heljan O Gauge Ref. 3401 BR Civil Engineers Dutch Liveried Class 33/0, renumbered Post Factory as No. 33047 "Spittfire" with Post Factory Weathering done to a professional standard. Condition is Good Plus in Good Plus box and senders box.

Estimate: £160-180



Lot No. 357

Heljan O Gauge BR Green 2-6-2 61xx Prairie Tank No. 6147. This Locomotive has been Renumbered and Weathered Post Factory to a professional standard. Condition is Good to Excellent (please note some tarnishing and glue marks to body work) in Good box.

Estimate: £90-110



Lot No. 358

Heljan O Gauge 2-6-2 Tank Loco BR Lined Green 2-6-2 Prairie Tank Class 61XX No.6132, 2-rail Finescale Electric. Condition is Excellent in Good Plus box.

Estimate: £100-120



Lot No. 359

Heljan O Gauge EWS Class 37/4 Diesel Locomotive renumbered to represent No. 37410. Renumbered and post Factory weathered to a Good Standard. Condition is Good Plus in Good box.

Estimate: £120-140



Lot No. 360

Heljan O Gauge Ref. 3402 EWS Class 33/0 No. 33030. Condition is Near Mint in Good Plus box and senders box.

Estimate: £160-180

Auction E102 Model Trains - Online Auction - Day 1 on 29 October 2025



Lot No. 361

Heljan O Gauge Ref. 2000 BR Green with Small Yellow Warning Panels English Electric Type 1 (Class 20) - unnumbered. Condition is Good Plus (one window fitting is loose) in Good Plus box.

Estimate: £140-160



Lot No. 362

Heljan O Gauge Ref. 4950 57' Carmine & Cream BK Mk1 Coach. Condition is Excellent in Good to Good Plus Box and Outer Sleeve (some slight taring on box).

Estimate: £70-90



Lot No. 363

Dapol O Gauge Ref. 7S-026-005 BR 0-6-0 Class 3F Jinty Steam Locomotive No. 47501, 2-rail electric. Condition is generally Near Mint in Good Plus box.

Estimate: £100-120



Lot No. 364

Dapol 4S-018-005 0-4-0 BR Black B4 Class No. 30096 Tank Loco. Conditions are Good Plus in Good box with the letter "W" marked on box label.

Estimate: £70-90



Lot No. 365

Dapol O Gauge Ref. 7S-025-002 0-6-0 BR Black Class 74XX Pannier Class Steam Tank Locomotive No. 7444. Condition is Excellent in Good Plus box.

Estimate: £80-100



Lot No. 366

Dapol O Gauge Ref. 7S-006-025 BR Black 0-4-2 14xx Tank Locomotives No. 1413 (Red Backed Number Plate). Condition is Good Plus (missing Magnetic Roof and unchecked for completeness) in Good Plus box.

Estimate: £70-90



Lot No. 367

Dapol O Gauge Ref. 7S-005-007 NCB Blue with Yellow Wasp Stripes 0-4-0VBT Sentinel No. 14 "Maude". Condition is Near Mint in Good Plus box.

Estimate: £60-80



Lot No. 368

Dapol O Gauge Ref. 7S-005-005 BR Black 0-4-0VBT Sentinel No. 68164. Condition is Near Mint in Good Plus box and senders box.

Estimate: £60-80



Lot No. 369

Lionheart Trains (Dapol) O Gauge Finescale group of 4x Boxed Mineral Wagons to include Ref. LPO02N"W Fairclough" Plus others (see photo). Conditions are Excellent Plus in Good Plus boxes.
Estimate: £60-80



Lot No. 370

Ixion Models O Gauge Hudswell Clarke Lined Green 0-6-0 Standard Contractor's Tank. This Locomotive has been numbered No 10 "Ladysmith". Condition is Good Plus in Good Plus box.
Estimate: £70-90



Lot No. 371

Ixion Models O Gauge Hudswell Clarke Black 0-6-0 Standard Contractor's Tank. This Locomotive has been numbered No 6 "Hawkesbury". Condition is Good Plus in Good Plus box.
Estimate: £70-90



Lot No. 372

Lionheart Trains (Dapol) O Gauge Ref. LHT-S-4504 BR Black 45xx 2-6-2 with Straight Tanks No. 4545. Conditions is Excellent Plus in Good Plus box.
Estimate: £120-140



Lot No. 373

Lionheart Trains (Dapol) O Gauge Ref. LHT-603 BR Crimson Suburban B 2-Coach Set "Bodmin". Condition is Near Mint in Good Plus box.
Estimate: £140-160



Lot No. 374

ETS Models O Gauge 2 & 3 Rail BR Black S100 USA Tank 0-6-0T No. 30069. Condition is Good Plus with some slight tarnishing on tank tops in Good box.
Estimate: £110-130



Lot No. 375

Bassett-Lowke O Gauge 2 & 3-Rail Industrial Peckett 0-4-0 Saddle Tank "Wenman" with Smoke Generator, Production No. 54. Conditions is Excellent Plus in Good box (some slight discolouration to box lid).
Estimate: £120-140



Lot No. 376

MTH O Gauge 3-Rail Rail King Real Tracks Pointwork - Group of L/H with five 40-1005, two 30-1044 and one 40-1056. Conditions: Appears Excellent to Excellent Plus in Fair to Good Boxes.
Estimate: £80-100



Lot No. 377

MTH O Gauge 3-Rail Rail King Real Tracks Pointwork - Group of R/H points with four 40-1004 & one 30-1043. Conditions: Appears Good Plus to Excellent Plus in Mostly Excellent boxes.

Estimate: £80-100



Lot No. 378

MTH O Gauge 3-Rail Rail King Real Tracks Trackwork - Large group to include 60 straight sections, eight curved sections plus Z Controller (No power pack) & other smaller sections. Conditions: Generally Good to Good Plus.

Estimate: £100-120



Lot No. 379

Williams Trains (Bachmann) 3-rail O Gauge No. 2373 & No. 2373C - with outer mailer box. Conditions: Excellent Plus to Near Mint, one is still factory wrapped, the other has seen light use, in Excellent Plus box.

Estimate: £100-120



Lot No. 380

Williams Trains (Bachmann) 3-rail O Gauge 2296AO Canadian Pacific 60' Aluminum Luxury Liners 3 car add-on. Conditions: Mint in factory cellophane wrap and original mailer box.

Estimate: £100-120



Lot No. 381

Williams Trains (Bachmann) O Gauge 3-rail 43264 O-27 Streamliner 4 car set for the Santa Fe railroad. Conditions: Excellent to Excellent Plus in Good Plus Boxes & Outer box.

Estimate: £80-100



Lot No. 382

Williams Trains (Bachmann) 3-rail O Gauge W-2373C Canadian Pacific F3 Dummy B Unit. Conditions: Mint with factory packing still in place in Excellent Box and original mailer.

Estimate: £60-80



Lot No. 383

Williams Trains (Bachmann) 3-rail O Gauge Modern Issue LL1029 Canadian Pacific Luxury Liners 4-cab set aluminium Railway Express Agency No.2530, Blare Manor, Banff Park and Skyline 500 Coaches. Still factory sealed with outer mailer, Mint boxed.

Estimate: £60-90



Lot No. 384

Bing (Circa 1902) Gauge 3 Dining-Car. Condition is Good Plus to Excellent with age related ware to the paintwork.

Estimate: £60-80



Lot No. 385

Lionel Trains O Scale 3-Rail Electric group of 16x items including Boxed Locomotive, Tender, Coaches, sectional track to make an oval and Transformer to include Ref. 1688 2-6-2 Locomotives No. 1688E and Ref. 1689T Lionel Lines Tender plus others (see photo). Conditions are generally Fair to Excellent in Fair to Good boxes and original senders box.

Estimate: £20-40



Lot No. 386

Darstaed (Modern Issue) O Gauge 0-6-0 LMS Maroon 3F Jinty Steam Tank Locomotive No. 7117, 3-Rail. Condition is Excellent Plus in Good Plus box.

Estimate: £120-140



Lot No. 387

Finescalebrass (Sancheng) O Gauge 4-6-0 Royal Scot. Painted to represent BR Lined Green Stanier 7P No. 46113 "Cameronian", finished to an Excellent Standard. Condition is Excellent in Good box.

Estimate: £200-240



Lot No. 388

Minerva Model Railways O Gauge 0-6-0 BR Green Class 14 "Teddy Bear" unnumbered. Condition is Excellent in Good Plus box.

Estimate: £100-120



Lot No. 389

Ace Trains (Modern Issue) O Gauge 2/3-Rail 4-6-2 BR (SR) Bullied Light Pacific No. 34066 "Spitfire". Condition is evident signs of usage but otherwise Excellent in Good Plus Box and Senders box.

Estimate: £400-460



Lot No. 390

Ace Trains (Modern Issue) O Gauge 2/3-Rail Ref. E27 H 4-6-2 BR Standard 7MT No. 70013 "Oliver Cromwell". Condition is Good Plus (missing 3rd Rail centre pick up) in Good Plus Box and Senders box.

Estimate: £220-240



Lot No. 391

Finescalebrass (Shancheng) O Gauge BR Black Ivatt 2MT No. 46426. Condition is Good Plus (one buffer is missing) in Good box.

Estimate: £200-220



Lot No. 392

MTH O Gauge (Finescale) Ref. 22-60045 BR Crimson & Cream 4 Coach LMS Standard Passenger Coach Set. Condition is Excellent Plus in Good Box

Estimate: £100-120



Lot No. 393

Sancheng O Gauge Unboxed 2-Rail Finescale LMS Black 2-6-0 Hughes Crab Locomotive No. 2760. Condition is Excellent with post factory Weathering and details added.

Estimate: £180-200



Lot No. 394

Lionel O Gauge 3-Rail Lionel Lines Black 0-4-0 Switcher Locomotive No. 1656. Condition is generally Good to Excellent with some chipping and fatigue to bodywork.

Estimate: £60-80



Lot No. 395

Lionheart Trains (Dapol) & Dapol O Gauge Finescale group of 4x Boxed Tank Wagons to include Dapol Ref. 7F-031-001 6 Wheel Milk Tanker "Express Dairies" Plus others (see photo). Conditions are Excellent Plus in Good Plus boxes.

Estimate: £60-80



Lot No. 396

Skytrex, Kitbuilt and Similar mixed group of 17x unboxed Wagons (see photo). Built to a Good standard. Conditions are generally Good to Excellent with some wear to paintwork and some wagons requires repairs to complete.

Estimate: £50-70



Lot No. 397

Darstead, Kitbuilt and Similar O Gauge group of 24x unboxed LMS Grey wagons (see photo). Built to an Good Plus standard. Conditions are Good Plus to Excellent.

Estimate: £80-100



Lot No. 398

Leeds Models Co. Kitbuilt and Similar O Gauge Course Scale group of 18x Wagons and Wagon Bodies and 2x Coaches (see photo). Conditions are generally Good to Excellent (please note all stock have 3 Link Couplings and some repairs are required to complete wagons).

Estimate: £80-100



Lot No. 399

Lima, Kitbuilt and Similar O Gauge Finescale group of Wagons, Coaches and other Accessories (see photo). Kit built items are built to a Good standard. Conditions are Fair to Good Plus. Please note some items have been repainted and require some repairs to complete.

Estimate: £20-30



Lot No. 400

Hornby, Bassett-Lowke and Similar group of unboxed Wagons, Coaches and other Accessories (see photo). Conditions are Fair to Good Plus.

Estimate: £20-30



Lot No. 401

Kadee O Gauge group of 4x Ref. 746 Long Counterset Shank Metal Couplers & Plastic Body Mounted Gearboxes. Conditions are generally Good to Excellent (unchecked for completeness) in Good packaging (one package appears to have been opened).

Estimate: £10-20



Lot No. 402

Lima O Gauge Timpo & Marx items - with Clockwork Mechanical Set 528, Timpo Battery Powered US Set and Lima UK Outline group, with track and pointwork. Conditions: Range from Fair to Good Plus with Good packaging for the Marx set.

Estimate: £60-80



Lot No. 403

Piko G Gauge Catalogue Ref 37200 0-6-0 Tank Loco DR black Class 80 No.80 024. Conditions: Excellent to Excellent Plus in Good Box.

Estimate: £70-90



Lot No. 404

LGB G Gauge Spares/Repairs items - Large assortment of wheels, motion gear, detailing items plus others. Conditions: Assumed Excellent to Excellent Plus, Unchecked for completeness.

Estimate: £70-90



Lot No. 405

LGB G Gauge Locomotive & Wagons - to include spare bogies and some wagon accessories. Conditions: Fair to Good.

Estimate: £80-100



Lot No. 406

Bachmann G Gauge USA 93939 Open Street Car - United Traction. One coupling has a damaged centreing spring, and OHE pickup has signs of rust. with two sections of straight track. Conditions: Generally Fair to Good.

Estimate: £60-80



Lot No. 407

LGB G Gauge Locomotive & Rolling stock assortment. Conditions Generally Fair, Locomotive is missing cab roof, other items would benefit from a cleaning up.

Estimate: £70-90



Lot No. 408

LGB G Gauge Coaches & Wagons - One coach has been modified and appears to have some electrical parts added and repainted. All would benefit from being cleaned. Conditions: Generally Fair to Good.

Estimate: £50-70



Lot No. 409

LGB G Gauge Locomotive & Carriages - with a pair of German flavour coaches plus a standard Playmobile style coach. Conditions: Overall Good to Good Plus.

Estimate: £70-90



Lot No. 410

LGB G Gauge & Similar - with Flexi-track and some sectional track plus spare sleeper sections, Buffers, Signals and an assortment of wagons & other items. Conditions: Fair to Good in Fair to Good boxes. Due to Track Length (1.2meters), please contact for delivery options.

Estimate: £70-90



Lot No. 411

Mamod SR1A Steam Roller. with Steering handle & Methylated Spirits burner box. Has been fired on a number of occasions and would benefit from a clean, Good in Fair Box with damaged lid.

Estimate: £50-70



Lot No. 412

Carson built for Bassett-Lowke Gauge 3 (2.5 inch gauge) Live Steam (Spirit Fired) Caledonian Railway Blue 4-6-0 903 Class Locomotive No. 903 "Cardean". Built circa 1905/1906. It has been fired and has been repainted finished with hand painted lining, motifs, numbering and lettering to an exceptional standard. Model measures approx. 84cm (33.5 inches) by 11cm (4.25 inches). Condition is Excellent (unchecked for completeness. Please note Lamp Iron and Lamp is loose but included with model).

Estimate: £800-1,000



Lot No. 413

Carette built for Bassett-Lowke Gauge 3 (2.5 inch gauge) Live Steam (Spirit Fired) Great Eastern Blue 4-4-0 Locomotive. Model measures approx. 72cm (28 inches) by 10cm (4 inches). Condition is Excellent (unchecked for completeness and some chipping to paintwork).

Estimate: £500-700



Lot No. 414

Carson built for Bassett-Lowke Gauge 3 (2.5 inch gauge) Live Steam (Spirit Fired) North Eastern Railway 4-4-0 R1 Class Locomotive No. 1238. It has been fired and has been rebuilt with additional fittings and repainted finished with hand painted lining, motifs, numbering and lettering to a Good standard. Model measures approx. 76cm (30 inches) by 10cm (4 inches). Condition is Excellent (unchecked for completeness).

Estimate: £600-800



Lot No. 415

Bing (Circa 1863-1901) Gauge 2 Live Steam 2-2-0 "Strokleg" Locomotive with Tender. This model is noted as being one imported to UK Post WW1 as it has the DRGM Logo on the Splashers and has been fired. Conditions is excellent with age related ware to body and paint work.

Estimate: £200-220



Lot No. 416

3.5 inch gauge Coal Fired 4-4-0 No. 220 resembling a Fletcher Style Locomotive of the NER. Has been fired but has very little residue and is missing the firebars for the firebox and some repairs required to complete. Condition is generally Good Plus to Excellent (unchecked for completeness and signs of age on the paintwork).

Estimate: £300-320



Lot No. 417

Live Steam 2-4-0 Spirit Fired Steam Locomotive built from unknown manufacturer. Set to 80mm Gauge and has been fired. Dimensions are approx. 56cm (22 inches) by 10cm (4 inches) condition is generally Good to Excellent (some repair work required to compete).

Estimate: £120-140



Lot No. 418

Gauge 2 Live Steam GWR Green 2-4-0 Spirit Fired Locomotive built by unknown manufacture. Locomotive has been hand lined to a high standard. Condition is Good plus to Excellent with paintwork worn due to age.

Estimate: £120-140



Lot No. 419

Georges Carette & Cie Gauge 3 4-2-0 Spirit Fired Live Steam Locomotive and Tender. This Locomotive has been fired but appears in sound mechanical condition. Condition is Excellent with Age related ware to paint work.

Estimate: £300-320



Lot No. 420

OO Assortment of Buildings, Trackside, Platforms etc. Conditions Are Fair to Good.

Estimate: £5-10



Lot No. 421

Large Group of Control Equipment, Spare Parts, N Gauge Stock Kits etc. Including Bachmann Magnum DC Controller, Hammant & Morgan S.M.3 Point Motors, Minitrix Electrical Accessories and Bachmann N Gauge American Stock Cars. Plus Others Including A Slot Car System. See Photos.

Estimate: £10-20



Lot No. 422

Trackside and Scenery Group. Including; Hornby Inclines. Faller, Metcalfe and Peco Kits. Skaledale Granite Walling, Javis and Riko Scatters. Plus Unboxed, Unpainted Airfix Civilians. See Photo.

Estimate: £5-10



Lot No. 423

Trix-Twin and Hornby Dublo group of Sectional 3-Rail Track. Condition is Poor to Fair with Rust and Encrusted dirt on Track so would require cleaning or suitable for spares and repairs.

Estimate: £5-10



Lot No. 424

Trix Twin OO Gauge group of 3-rail 6x unboxed Locomotives & Coaches (see photo). Conditions are Fair to Good.

Estimate: £15-20

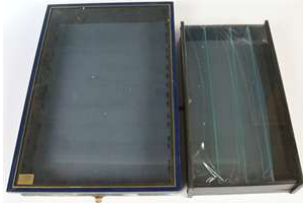
Auction E102
Model Trains - Online Auction - Day 1 on 29 October 2025



Lot No. 425

Hornby (GB & China), Metcalfe and Similar Large group of Buildings and Accessories built to a Good standard (see photo). Conditions are generally Poor to Good which signs of damage and ware all items are unchecked for completeness and some cleaning required.

Estimate: £10-20



Lot No. 426

Collection Only - Pair of display Cabinets one measuring approx. 54cm by 24cm and 9cm and the other is measuring 64cm x 43cm x 8cm. Conditions are fair the smaller display cabinet has some damage to one side and the larger requires shelves to complete and some cleaning required. Please note there is glass contained within items.

Estimate: £10-20



Lot No. 427

Battery Operated Christmas Train set approximately to O Gauge. Conditions is Poor to Fair, cleaning is required and tarnishing and ware on box.

Estimate: £5-10



Lot No. 428

Hornby (GB), Triang, Vau-pe and Similar OO and HO Scale unbuilt kits, track and lineside accessories to include Vau-Pe Ref. 8116 Plastic Factory Kit Plus others (see photo). Conditions are Fair to Good with cleaning required in Poor to Good boxes.

Estimate: £5-10



Lot No. 429

Noch Soundstation systems - to include 60200 & 60260 Synchro Sound Box. Conditions: Appears Excellent to Excellent Plus in Excellent Boxes.

Estimate: £10-20



Lot No. 430

Minitrix N Gauge and Similar mixed group of Locomotives, Wagons, Coaches, Buildings and other Accessories and items including Electrical items (see photo). Conditions are Fair to Good with some items for spares and repairs in Fair boxes.

Estimate: £30-40



Lot No. 431

ZTC 505 DCC Controller & Transformer pack - Unchecked for completeness, Conditions: Appears Good Plus to Excellent Plus in Good Boxes.

Estimate: £80-100



Lot No. 432

Viessmann HO Scale street lamps - with 6089 & 6090. Conditions: Appears Excellent Plus to Near Mint in Excellent Plus boxes.

Estimate: £70-90



Lot No. 433

Viessmann HO Scale Busch & Similar electrical equipment - large assortment including 5907 Road markers, 4517 Signals Plus other items. Conditions: Vary from Fair to Excellent Plus in Good to Excellent Plus packaging.

Estimate: £80-100



Lot No. 434

Large assortment of OO/HO scale etailing items to include Magno rail bicycles, Langley Models f285 Bench Drills plus other items. Conditions: Generally Fair to Near Mint in Good Packaging.

Estimate: £70-90



Lot No. 435

Busch HO/N Scale Faller & Similar Electrical items - to include 5945, 222175 crossing light and a large array of Fleischmann push button switch gear. Conditions: Generally Fair to Excellent in Mostly Good to Good Plus packaging.

Estimate: £80-100



Lot No. 436

Busch HO Scale Brawa & Similar Electrical items - with Nr. 5915, Conrad Electronic Signal servo arm, Plus other accessories. Conditions: Generally Good Plus to Near Mint in Good Plus to Excellent packaging.

Estimate: £80-100



Lot No. 437

C&L Finescale OO/HO & other Gauge Peco & Similar Spares Items - with Pantographs, MJT Scale Components Plus many other parts. Conditions: Generally Excellent in Excellent packaging.

Estimate: £50-70



Lot No. 438

Wicking HO Scale & Similar large group of Road vehicles - Many boxed and unboxed examples including busses and construction equipment. Conditions: Generally Fair to Good Plus. in Fair to Good packaging.

Estimate: £60-80



Lot No. 439

Preiser HO Scale Roco & Arsenal M Military kits - A group of Military Diorama related kits and parts. Conditions: All are unchecked for completeness, Assumed Excellent Plus to Near Mint.

Estimate: £60-80



Lot No. 440

Eheim HO Scale Trolley Busses - an unboxed group to include two 6 wheeled busses and three 4 wheeled busses, two are a pair. Conditions: Generally Fair to Good.

Estimate: £60-80



Lot No. 441

Eheim HO Scale Trolley Busses - with 110, 6100B and a Brawa 6107 trolley trailer. Conditions: Generally Good Plus to Excellent Plus in Good Plus boxes.

Estimate: £50-70



Lot No. 442

Brawa HO Scale Trolley bendi-bus with OHE Catenary equipment and roll of wire. Conditions: Generally Good to Good Plus in Fair to Good Cases.

Estimate: £50-70



Lot No. 443

Lehmann G Gauge Vintage Battery operated train packs - two sets with Locomotives and track, one set is missing wagons. Conditions: Appears Fair to Good in Poor to Fair packaging.

Estimate: £50-70



Lot No. 444

Lenz DCC Decoders & Other accessories - with three Lenz 10335 LE1835E Decoders, Arnold Digital Central Control 80 Plus along with a H&M Loco Tester track. Conditions: All electrical items are Untested, Generally Good to Good Plus in Fair to Good packaging, one decoder case has a crack in the lid.

Estimate: £60-80



Lot No. 445

Viessmann HO Scale Sommerfeldt & Similar Catenary masts and wires - to include 4129 Mast Plus many other items. Conditions: Vary From Good to Near Mint in Excellent Plus packaging.

Estimate: £30-40



Lot No. 446

Eheim HO Scale Trolley-Bus System - Bus Appears to have been repainted from original Blue/White to a yellow lined maroon. with four masts (one missing its base). Conditions: Poor to Good in original Fair Box, lid has some damage to picture face torn in the middle & at two of the corners.

Estimate: £40-60



Lot No. 447

Vollmer HO Scale Knightwing & Similar kits - General assortment of kits and kit built items, detailing parts plus other items. Conditions: Kits are unchecked for completeness, Generally Fair to Good in Fair to Excellent packaging.

Estimate: £70-90



Lot No. 448

Hornby (GB/China) OO Gauge Lima & Similar items - with a group of repainted locomotives in varied liveries, plus Lima (HO) L208058L SNCF 72002 French Diesel locomotive with two french rail pullman cars, plus other items. Conditions: Generally Poor to Good.

Estimate: £80-100



Lot No. 449

Mainline OO Gauge Hornby (GB) & Similar locomotives - to include LMS Locomotives, Joem in North Eastern green livery and Hornby-Dublo 2-rail Repainted in West Country BR 'Barnstaple' 34005 livery Plus Class O8 D3035. Conditions: Generally Good to Good Plus in Fair to Good boxes.

Estimate: £80-100



Lot No. 450

Tri-ang, Hornby (GB & China) and Similar OO Gauge large group of Wagons, Coaches and Accessories (see photo). Conditions are generally Good to Excellent (some bodies are loose from chassis).

Estimate: £70-90



Lot No. 451

Hornby (GB & China) mixed group of track and track related accessories to include Hornby (China) R8072 Standard Left Hand Point plus others (see photo). Conditions are generally Good to Excellent in Good Packaging.

Estimate: £50-70



Lot No. 452

Hornby (GB), Wrenn and Similar OO Gauge mixed group of 12x Steam and Diesel Locomotives plus 1x DMU & 2x Spare Tenders. Conditions are Fair to Good Plus

Estimate: £60-80



Lot No. 453

Hornby (China & GB) group of Controllers and Electrical Accessories to include Hornby (China) R8081 HM4000 Controller plus others (see photo). Conditions are generally Good to Excellent in Good boxes.

Estimate: £60-80



Lot No. 454

Hornby (GB & China) and Similar mixed group of unboxed buildings plus other items and accessories to include a representational Locomotive Drivers Cap (see photo). Conditions are generally Good to Excellent.

Estimate: £50-70



Lot No. 455

Hornby (GB & China), Dapol and Similar OO Gauge mixed group of boxed buildings, unbuilt building kits and other Assorted Accessories to include Hornby (GB) R410 Electrically Operated Turntable plus others (see photo). Conditions are generally Good to Excellent (unchecked for completeness or correctness) in Good to Good Plus boxes and packaging.

Estimate: £60-80



Lot No. 456

Fleischmann 6152 HO Gauge Turntable and Hornby Dublo Turntable, rotary dial is missing and control wires cut- Conditions: Good to Good Plus in Good box.

Estimate: £40-50



Lot No. 457

Copper Clad Handbuilt OO Track Group. Various points including double slip, plus straight and curved Handbuilt OO Gauge Plain Track. Conditions Are Generally Good. See photo.

Estimate: £30-40



Lot No. 458

Scenic and display group for model railways, to include; Heki trees, Woodcraft scatter and green baize-like material. Conditions are Generally Fair to Good (see photo).

Estimate: £30-40



Lot No. 459

Railway Jigsaw group, to include; "Victory" No. TP5 "Atlantic Coast Express" at Seaton Junction, plus others. Conditions are Generally Good to Excellent (2 still shrink wrapped), unchecked for completeness.

Estimate: £20-30



Lot No. 460

Model Railway Locomotive storage box group. Cardboard storage boxes covered in coloured wrap (red/green/blue/black) approx 12"/330mm long x 2 3/4"/70mm wide. 23 plus 2 plain. Conditions are Excellent Plus. See photo.

Estimate: £20-30



Lot No. 461

Kitbuilt and Scratchbuilt mixed group of Railway Buildings. Mostly Great Western Railway Buildings ex-layout, conditions are Generally Good to Excellent (some repairs required). See photo.

Estimate: £30-50



Lot No. 462

Dinky, diecast and Plastic OO/HO railway roadside vehicles, to include; boxed Dinky's 104/111/157/197 (modern reproductions) plus others (see photo). Conditions are Fair to Excellent.

Estimate: £30-40



Lot No. 463

Model Railway Project boxes of mostly trackside items, to include; Ratio, Wills and Slater's plus others (see photo). Conditions are Generally Fair to Good.

Estimate: £20-30



Lot No. 464

Model Railway Project boxes of mostly Coach and Wagon items, to include; Bodies, sides and detailing parts plus others (see photo). Conditions are Generally Fair to Good.

Estimate: £20-30

Auction E102 Model Trains - Online Auction - Day 1 on 29 October 2025



Lot No. 465

Model Railway Project boxes of mostly steam locomotive items, to include; Bodies, chassis, wheels and detailing parts plus others (see photo). Conditions are Generally Fair to Good.

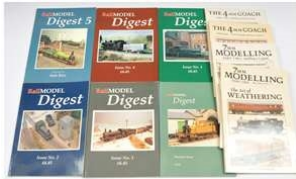
Estimate: £20-30



Lot No. 466

Model Railway Project boxes of mostly rolling stock and trackside items, to include; Kadее couplings and signalling parts plus others (see photo). Conditions are Generally Fair to Good.

Estimate: £20-30



Lot No. 467

Wild Swan and similar publications on Railway Modelling; from Authors Martyn Welch, Iain Rice, Gordon Gravett and Stephen Williams. Covering aspects of Weathering, 7mm Modelling and Coaches. Conditions are Good Plus to Excellent.

Estimate: £30-40



Lot No. 468

Railway Modelling Magazines - to include numerous issues of British Railway Modelling, Railway Modeller and Hornby magazine, plus Railway Roundabout DVD's. Conditions: Mostly Good to Good Plus.

Estimate: £5-10



Lot No. 469

Minic Motorways, Matchbox and Similar group of boxed and unboxed cars and Accessories to include Minic Motorways Ref. M/1581 Aston-Martin DB.6 Coupe plus others (see photo). Conditions are Poor to Good in Fair boxes (please note one box is empty).

Estimate: £40-50



Lot No. 470

Tri-ang Minic Motorway and Similar large collection of boxed and unboxed Sectional Road pieces and controller to include Ref. 4-1626 Humpback Bridge Summit plus others (see photo). Conditions are generally Good to Excellent (unchecked for completeness or correctness) in Fair to Good boxes.

Estimate: £50-70



Lot No. 471

Ratio, Parkside Dundas and Similar OO Gauge kit built Wagons and Coaches (see photo). Built to a Fair to Good Standard. Conditions are Poor to Good Plus. Please note several wagons have been damaged and some repairs/remediation work required to complete.

Estimate: £40-60



Lot No. 472

Bachmann, Hornby (China) and Similar OO Gauge large group of unboxed GWR and SR wagons (see photo). Conditions are generally Good to Excellent (Some cleaning required).

Estimate: £60-80



Lot No. 473

Hornby (GB), Lima and Similar OO Gauge large group of unboxed BR Corporate and Sectorisation Era Coaches and Parcel Vans (see photo). Conditions are Good to Excellent (some cleaning required).

Estimate: £80-100



Lot No. 474

Hornby (China) & Bachmann OO Gauge group of 3x unboxed BR (SR) Green Corridor Stock EMU's to include Hornby (China) R3162A 2-BIL Train No. 2142. Condition's are Good to Good Plus.

Estimate: £80-100



Lot No. 475

Bachmann, Hornby (GB) & Similar OO Gauge large group of 18x unboxed BR (ER) Coaches and NPCPS Vans (see photo). Conditions are Good to Excellent (some cleaning required).

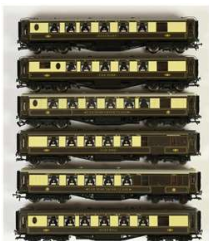
Estimate: £80-90



Lot No. 476

Hornby (GB), Airfix and Similar OO Gauge large group of 34x unboxed Private Owner Wagons (see photo). Conditions are Good to Excellent (some cleaning required).

Estimate: £40-60



Lot No. 477

Hornby (China) group of 6x unboxed Pullman Coaches with Lights to include R4480 Pullman 1st Kitchen Car "Minerva" plus others (see photo). Conditions are generally Good to Excellent (some cleaning required).

Estimate: £70-90



Lot No. 478

Bachmann, Hornby (China) and Similar OO Gauge large group of unboxed LNER and LMS wagons (see photo). Conditions are generally Good to Excellent (some cleaning required).

Estimate: £60-80



Lot No. 479

Lima, Bachmann and Similar OO Gauge group of 6x unboxed BR (Predominantly Scottish Region) DMU Sets (See Photo). Conditions are generally Good to Excellent (some cleaning required).

Estimate: £90-110



Lot No. 480

Lima, Bachmann and Similar OO Gauge group of 4x BR Green DMU Sets (See Photo). Conditions are generally Good to Excellent (some cleaning required).

Estimate: £70-90



Lot No. 481

Bachmann, Hornby (China) and Similar OO Gauge large group of 36x unboxed Tank wagons (see photo). Conditions are generally Good to Excellent (some cleaning required).

Estimate: £60-80



Lot No. 482

Hornby (GB), Lima and Similar group of 12x unboxed BR Blue Diesel and Electric locomotives (see photo). Conditions are Generally Good to Excellent (some cleaning required).

Estimate: £80-100



Lot No. 483

Hornby (GB), Lima and Similar OO Gauge group of 11x unboxed BR Sectorisation Liveried Diesel and Electric Locomotives to include Lima Ref. L204808 Railfreight Metal Sector Livery Class 60 No. 60050 "Roseberry Topping2 plus others (see photo). Conditions are Good to Excellent (some cleaning required).

Estimate: £90-110



Lot No. 484

Hornby (GB) and Lima OO Gauge group of 20x unboxed Modern Image Tank Wagons (see photo). Conditions are generally Good to Excellent (some cleaning required).

Estimate: £50-70



Lot No. 485

Hornby (GB) and Bachmann OO Gauge group of 21x unboxed Railfreight Modern Image Wagons (see photo). Conditions are generally Good to Excellent (some cleaning required).

Estimate: £60-80



Lot No. 486

Hornby (GB), Bachmann and Similar OO Gauge large group of modern image wagons (see photo). Condition's are generally Good to Excellent (some cleaning required).

Estimate: £60-80



Lot No. 487

Lima, Wrenn and Similar OO Gauge large group of 31x unboxed Private Owner Wagons (see photo). Conditions are Good to Excellent (some cleaning required).

Estimate: £40-50

Auction E102
Model Trains - Online Auction - Day 1 on 29 October 2025



Lot No. 488

Bachmann, Hornby (China) and Similar OO Gauge group of 56x unboxed BR Wagons, and Engineering Rolling Stock, Accessories (see photo). Conditions are generally Good to Excellent (some cleaning required and some wagons have loads added).

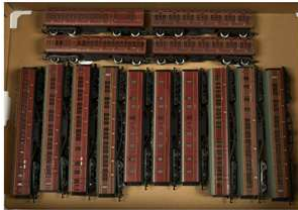
Estimate: £60-80



Lot No. 489

Hornby (GB) & Lima group of BR InterCity 125 Blue and Grey & Executive Liveried items to include 2x Class 43 HST Power Cars, 2x Class 43 HST Dummy Cars and 9x Mk3 Coaches

Estimate: £50-70



Lot No. 490

Hornby (GB), Mainline and Similar OO Gauge group of 14x LMS Crimson Coaches (see photo). Conditions are generally Good to Excellent (Please note with some cleaning required).

Estimate: £60-80



Lot No. 491

Tri-ang & Hornby (GB) group of 19x LNER Teak Coaches (see photo). Conditions are Good to Excellent (some cleaning required).

Estimate: £60-80



Lot No. 492

Hornby (GB), Dapol and Similar OO Gauge group of 20x LMS Crimson Coaches to include Hornby (GB) R412 TPO Mail Coach No 30250 & Hornby (China) R4095 68th 12 Wheels Dining Car No. 235. Conditions are generally Good to Excellent with some cleaning required).

Estimate: £80-100



Lot No. 493

Hornby (GB & China), Bachmann and Similar OO Gauge group of 25x BR(MR) Maroon Coaches to include 2x Hornby (GB) R597 TPO Mail Coach No M30250M & Hornby (China) R4131A 68th 12 Wheels Dining Car No. M230M plus others (see photo). Conditions are generally Good to Excellent with some cleaning required).

Estimate: £80-100



Lot No. 494

Hornby (GB & China), Bachmann and Similar OO Gauge group of 20x BR(MR) Crimson & Cream Coaches to include Hornby (China) R4188A 68th 12 Wheels Dining Car No. M234M plus others (see photo). Conditions are generally Good to Excellent with some cleaning required).

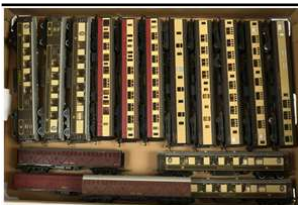
Estimate: £80-100



Lot No. 495

Hornby (GB), Lima and Similar OO Gauge group of 20x BR Executive and Scotrail Liveried Coaches & DVT plus others (see photo). Conditions are Good to Excellent (some cleaning required).

Estimate: £80-100



Lot No. 496

Hornby (GB), Bachmann and Similar OO Gauge group of 16x unboxed BR (WR) & Pullman Coaches and Parcel Vans (see photo). Conditions are generally Fair to Excellent (unchecked for completeness).
Estimate: £60-80



Lot No. 497

Hornby (GB) & Lima OO Gauge large group of 23x unboxed BR Mk1 Coaches (see photo). Conditions are Good to Excellent (some cleaning required).
Estimate: £80-100



Lot No. 498

Hornby (China), Bachmann and Similar OO Gauge large group of 41x unboxed BR Grey Wagons (see photo). Conditions are Good to Excellent. Please note some wagons have been repainted/renumbered, weathered and some have had loads added.
Estimate: £50-70



Lot No. 499

Hornby (China) and Bachmann OO Gauge group of 4x Steam Locomotives to include Bachmann Riddles Standard 4MT 2-6-4T No. 80135 in Lined Brunswick Green Livery as preserved on the NYMR plus others (see photo). Conditions are Good to Good Plus with some cleaning required.
Estimate: £40-60



Lot No. 500

Hornby (GB), Bachmann and Similar OO Gauge group of 14x BR(ER) Black Tank Locomotives (see photo). Conditions are Good to Good Plus with cleaning required.
Estimate: £80-100



Lot No. 501

Hornby (GB & China) group of 5x BR(SR) Lined Green Air-Smoothed Bulleid Pacific's (see photo). Conditions are Generally Good to Excellent. Please note has a loose wheel tyre and some cleaning is required.
Estimate: £60-80



Lot No. 502

Hornby (GB & China), Bachmann and Similar OO Gauge group of 10x unboxed Southern Railway Locomotives (see photo). Conditions are generally Good to Excellent.
Estimate: £60-80



Lot No. 503

Hornby (GB), Mainline and Similar OO Gauge group of 12x unboxed London Midland and Scottish Railway Crimson Locomotives (see photo). Conditions are generally Good to Excellent.
Estimate: £60-80



Lot No. 504

Hornby (GB), Bachmann and Similar OO Gauge group of 9x unboxed BR Green Diesel Locomotives (see photo). Conditions are generally Good to Excellent.

Estimate: £50-70



Lot No. 505

Hornby (GB), Bachmann and Similar OO Gauge group of 10x unboxed BR Green Era Diesel Locomotives (see photo). Conditions are generally Good to Excellent. Please note some cleaning required.

Estimate: £50-70



Lot No. 506

Hornby (China & GB), Bachmann and Similar group of 17x unboxed Steam Locomotives representing the early Liveries of British Railways. Conditions are generally Good to Excellent with some cleaning required.

Estimate: £90-110



Lot No. 507

Bachmann and Similar OO Gauge group of 11x unboxed BR (MR) Green Patriot, Jubilee & Royal Scot Steam Locomotives (see photo). Conditions are Good to Excellent with some cleaning required.

Estimate: £80-100



Lot No. 508

Hornby (GB), Mainline and Similar OO Gauge group of 15x unboxed London Midland and Scottish Railway Black Locomotives (see photo). Conditions are generally Good to Excellent with some cleaning required.

Estimate: £60-80



Lot No. 509

Hornby (GB & China) group of 11x unboxed London Midland and Scottish Railway Princess Royal & Princess Coronation Locomotives (see photo). Conditions are generally Good to Excellent with some cleaning required.

Estimate: £80-100



Lot No. 510

Hornby (GB & China) group of 9x unboxed BR (MR) Princess Royal & Princess Coronation Locomotives to include No. 46203 "Princess Margaret Rose" (see photo). Conditions are generally Fair to Excellent (unchecked for completeness).

Estimate: £70-90



Lot No. 511

Bachmann and Similar group of 16x unboxed LNER Steam Locomotives to include Thompson B1 4-6-0 No 1000 "Springbok" plus others (see photo). Conditions are Good to Excellent (unchecked for completeness).

Estimate: £80-100



Lot No. 512

Hornby and Similar group of 13x unboxed BR(ER) Steam Locomotives to include Gresley A3 4-6-2 No. 60080 "Dick Turpin" plus others (see photo). Conditions are Good to Excellent (unchecked for completeness).

Estimate: £80-100



Lot No. 513

Bachmann and Similar group of 13x unboxed BR(MR) Steam Locomotives with Early Emblems to include Stanier Jubilee 4-6-0 No. 45568 "Western Australia" plus others (see photo). Conditions are Good to Excellent (unchecked for completeness).

Estimate: £70-90



Lot No. 514

Bachmann and Similar group of 14x unboxed BR (SR) Steam Locomotives to include Urie N15 4-6-0 No. 30803 "Sir Harry Le Fise Lake" plus others (see photo). Conditions are Good to Excellent (unchecked for completeness).

Estimate: £80-100



Lot No. 515

Hornby and Similar group of 16x unboxed BR Steam Locomotives to include Riddles 9F 2-10-0 92220 "Evening Star" plus others (see photo). Conditions are Fair to Excellent (unchecked for completeness).

Estimate: £80-100



Lot No. 516

Bachmann and Similar group of 11x unboxed BR(MR) Steam Locomotives with Late Crests (see photo). Conditions are Good to Excellent (unchecked for completeness).

Estimate: £70-90



Lot No. 517

Hornby and Similar group of 12x unboxed GWR Steam Locomotives & 2x GWR Railcars to include Collett King Class 4-6-0 No. 6027 "King Richard I" plus others (see photo). Conditions are Good to Excellent (unchecked for completeness).

Estimate: £60-80



Lot No. 518

Bachmann and Similar group of 13x unboxed BR(WR) Steam Locomotives to include Collett Hall Class 4-6-0 No. 5960 "Saint Edmund Hall" plus others (see photo). Conditions are Good to Excellent (unchecked for completeness).

Estimate: £60-80



Lot No. 519

Hornby, Peco and Similar large group of sectional track and points (see photo). Conditions are Good to Excellent.

Estimate: £30-50



Lot No. 520

Hornby and Similar large group of 23x unboxed BR (SR) Coaches and NPCS Vans (see photo). Conditions are Good to Excellent unchecked for completeness.
Estimate: £80-100



Lot No. 521

Bachmann and Similar large group of 23x unboxed GWR Coaches and NPCS Vans (see photo). Conditions are Good to Excellent (unchecked for completeness).
Estimate: £70-90



Lot No. 522

Hornby and Similar large group of boxed and unboxed Lineside and Electrical Accessories (see photo). Conditions are Good to Near Mint (unchecked for completeness) in Good boxes and packaging.
Estimate: £50-70



Lot No. 523

Hornby group of unboxed H&M Controllers and Transformers (see photo). Conditions are generally Good to Excellent (Please note items are untested)
Estimate: £40-50



Lot No. 524

Hornby and Similar group of unboxed resin buildings and other Lineside Accessories (see photo). Conditions are generally Good to Excellent (unchecked for completeness).
Estimate: £40-60



Lot No. 525

Hornby (GB), Tri-ang and Similar group of 33x unboxed wagons (see photo). Conditions are Fair to Good Plus (unchecked for completeness).
Estimate: £40-60



Lot No. 526

Hornby-Dublo group of 41x unboxed Plastic Bodied Wagon (see photo). Conditions are Fair to Good Plus (unchecked for completeness).
Estimate: £50-70



Lot No. 527

Hornby-Dublo group of 41x unboxed Metal Bodied Wagon (see photo). Conditions are Fair to Good Plus (unchecked for completeness).
Estimate: £50-70



Lot No. 528

Bachmann and Similar group of 29x unboxed Private Owner Wagons (see photo). Conditions are Fair to Good Plus (unchecked for completeness).

Estimate: £60-80



Lot No. 529

Hornby-Dublo, Crescent and Similar mixed group of Semaphore Signals, Electric Signals and Lineside Buildings (see photo). Conditions are Good to Good Plus (unchecked for completeness).

Estimate: £40-50



Lot No. 530

Tri-ang and Similar group of unboxed Steam Locomotives, Coaches and DMU (see photo). Conditions are Fair to Excellent (unchecked for completeness)

Estimate: £40-50



Lot No. 531

00 Gauge 2-Rail AL1 (Class 81) Electric Locomotives No. E3002 built to the style of Hornby-Dublo Ref. 2245 with a Hand built Chassis. Conditions is Excellent.

Estimate: £60-80



Lot No. 532

Collection of Hachette Part Works Magazine to build O Gauge model of the "Flying Scotsman" Locomotive plus Binders. Editions 65-125 (2x No. 82 editions). Conditions are Good to Excellent (unchecked for completeness) in Good Packaging (one package is open).

Estimate: £30-50



Lot No. 533

Dinky O gauge and Similar Lineside signs and Accessories (see photo). Conditions are generally Good to Excellent with some wear on paintwork

Estimate: £100-120



Lot No. 534

Hornby (GB & China), Metcalf and Similar mixed group of Resin and Kitbuilt Buildings and Lineside Accessories to include Hornby (China) R8641 Platform Footbridge plus others (see photo). Conditions are generally Fair to Good Plus in Good box.

Estimate: £30-50



Lot No. 535

Peco, Dapol and Similar O Gauge group of Resin, Kitbuilt and unbuilt kits of Buildings and Lineside Accessories to include Dapol Ref. 7L-002-001 LMS Signal Home Wooden Arm Single Post plus others (see photo). Conditions are generally Fair to Excellent in Good to Good plus boxes.

Estimate: £40-60

Auction E102 Model Trains - Online Auction - Day 1 on 29 October 2025



Lot No. 536

Peco and Similar OO Gauge group of boxed, and unboxed points plus others track related accessories to include SL-90 Insulfrog Class 100 Double Slip plus others (see photo). Conditions are Good to Excellent in Good boxes.

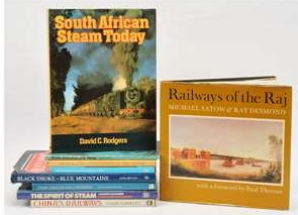
Estimate: £50-70



Lot No. 537

Gaugemaster Controllers group - to include Models TS, Q, 100M Plus PSU 1 T1 Transformer and a Handheld controller unit. Conditions: Generally Good Plus to Near Mint in Fair to Good packaging.

Estimate: £70-90



Lot No. 538

Continental Railway related books - to include Railways of the Raj, The Spirit of Steam - Locomotives in South Africa plus others. Conditions: Generally Fair to Good.

Estimate: £20-30



Lot No. 539

Railway Modelling Books - to include Modelling Aspects of the Coal Industry, Building a folding Model Railway Layout, plus others. Conditions: Generally Good to Good Plus.

Estimate: £20-30



Lot No. 540

General Assortment of Railway Related books - to include Terence Cuneo: Railway Painter of the Century plus many others. Conditions: Generally Good

Estimate: £20-30



Lot No. 541

Isle of Man Railways Books - Small group comprising of Tom Ferris titles From Steam to Diesel 1955 - 1967 & a Second Glance 1947 - 1970 Plus others. Conditions: Generally Good Plus.

Estimate: £20-30



Lot No. 542

General Assortment of Railway Books - With Railway Picture Post cards, Last Days of Steam: Plymouth & Cornwall, plus others. Conditions: Generally Good.

Estimate: £20-30



Lot No. 543

Collection Only - Group of assorted Railway books covering a wide range of interests - COLLECTION ONLY Due to weight. Conditions: Generally Fair to Good.

Estimate: £20-30



Lot No. 544

Narrow Gauge Railways Books of the UK - including titles such as 18 inch gauge steam railways, Irish Narrow Gauge, many books covering the Ffestiniog railways, Lynton & Barnstaple and many others. Conditions: Mostly Good to Good Plus.

Estimate: £20-30



Lot No. 545

Marklin Tin Plate Crane with hand cranks for luffing and slewing. Conditions are Good to Good Plus (some repair with required for the lifting jig).

Estimate: £60-80



Lot No. 546

Jouef HO Gauge Playcraft Train pack & Rolling stock - with "Euston" Passenger set (Missing track), plus a large selection of boxed continental wagons. Conditions: Generally Good Plus to Excellent Plus in Good Plus boxes, Train pack box has had some repairs done.

Estimate: £60-80



Lot No. 547

Seddon Atkinson Radiator pair of Grill Badges/Logos comprising of a Chrome Effect Circular "A" Logo and Chrome "Knight of the Road Logo" circa 1950-1970 with Stove Enamelled Plume. Conditions are Good to Excellent.

Estimate: £40-50



Lot No. 548

Fire Tender or Similar Lamps & sounder equipment - with two large spot lamps, one blue domed rotating beacon GB & EIR Bumper marker lamps plus other items. Conditions: Generally Excellent.

Estimate: £60-80



Lot No. 549

Railway Tours DVDs of Global interest, These are unchecked for completeness. Conditions: Assumed Excellent to Excellent Plus in Good Plus to Excellent Cases.

Estimate: £30-50



Lot No. 550

Kitbuilt/Scratchbuilt O Gauge 2-Rail Finescale Private Owner Red 0-6-0ST Freelance "Locomotive "J.F. Holder". Built from a DJH kit to a High Standard. Condition is Good Plus (please note one buffer is loose)

Estimate: £50-70



Lot No. 551

Skytrex and Similar mixed group of 7x boxed Wagons, 1x Boxed unbuilt Kit and 1x Empty Box to include Slater's Kitbuilt Ref. 7034 Midland/LMS 20t 6 Wheeled Brake Van plus others (see photo). Built to a high standard. Conditions are generally Good to Excellent in Good boxes (one item is in incorrect box).

Estimate: £50-70

Auction E102 Model Trains - Online Auction - Day 1 on 29 October 2025



Lot No. 552

Ratio OO/HO Preiser Assortment of kits - A large assortment of kits for layout detailing Plus Four Ratio No. 720 LMS Coaches plus many others. Unchecked for completeness. Conditions: Generally Good Plus to Excellent Plus in Fair to Good Plack packaging.

Estimate: £70-90



Lot No. 553

Hornby (China) R2897XS 4-6-0 BR Green West Country Class Locomotive No. 34108 "Wincanton" with Digital Sound. Condition is Excellent in Good box and outer sleeve. Fading to box and outer sleeve due to storage.

Estimate: £80-100



Lot No. 554

Hornby (China) group of 7x Stanier Coaches to include R4327A BR Maroon Full Brake No. M 31040 m plus others (see photo). Conditions are Good to Excellent in Good boxes. Fading to boxes due to storage.

Estimate: £70-90



Lot No. 555

Hornby (China) OO Gauge Plus Meccano items - with a selection of point motors, plus Meccano Red, Gold and blue/gold striped items. Conditions: Poor to Good Plus.

Estimate: £20-30



Lot No. 556

Meccano & Similar Brass Gears and other components - to include assorted universal joints, couplings, socket couplings plus other items. Conditions: Generally Good to Excellent Plus.

Estimate: £40-60



Lot No. 557

Collection Only - Meccano Dealers Chest Plus an assortment of motors including A750 EM02 types (unchecked for completeness) EM02 Electric Cube types, EMC & others. Collection Only. Conditions: Generally Good to Excellent with Good to Excellent cabinet.

Estimate: £80-120

Total Number of Lots: 557