



**Lot No. 1**

Bachmann Spectrum On30 Rail Truck and Streetcar; 29162 DCC On Board Rail Truck Colorado Mining Company and 25155 Closed Street Car Hershey. Conditions Are Excellent to Near Mint in Good Boxes.  
**Estimate:** £70-80



**Lot No. 2**

Bachmann Spectrum Pair of On30 Porter Locomotives. Consisting of; 25562 0-4-2 Colorado Mining Company Porter Steam Loco No.1 and 25559 0-4-2 Tioga Lumber Company Porter Steam Loco No.1. Conditions Are Near Mint in Good Boxes.  
**Estimate:** £90-100



**Lot No. 3**

Bachmann On30 Hawthorne Village Silver Moon Express 2-6-0 Locomotive and Tender, Plus Wild West Style Coaches, Box Cars and E-Z Track and Controller. Limited Edition Pieces with Certificates in Original Polystyrene Outers. Near Mint Condition (1 Box Car Has Broken Coupling). (13)  
**Estimate:** £90-110



**Lot No. 4**

Bachmann Spectrum HO Scale Pair of item comprising of Ref. 82102 Norfolk and Western J Class 4-8-4 No #610 and Ref. 89922 Norfolk and Western Auxiliary Tender. Conditions are Excellent to Excellent Plus in Good boxes.  
**Estimate:** £80-100



**Lot No. 5**

Bachmann Spectrum HO Scale group 7x Passenger Cars to include Ref. 89412 Norfolk and Western Red Combine Coach No. 1518 plus others (see photo). Conditions are generally Excellent to Excellent Plus in Good boxes.  
**Estimate:** £70-80



**Lot No. 6**

Bachmann Spectrum HO Scale Ref. 82504 USRA Heavy Mountain 4-8-2 Steam Locomotive No. 120. Condition is generally Excellent to Excellent Plus in Good box with some slight ware on lid.  
**Estimate:** £60-80



**Lot No. 7**

Bachmann Spectrum HO Scale group of 4x Diesel Locomotives to include Ref. 81227 Southern Green and White FM H16-44 Baby Train Master No. #2149, Ref. Pennsylvania GW 44 Ton Switcher No. 9337 plus others (see photo). Conditions are generally Good Plus to Excellent in Good boxes.  
**Estimate:** £80-100



**Lot No. 8**

Bachmann & Studio Canal OO Gauge Ref. 30-575 (Limited Edition) "The Railway Children" Special Collectors Edition Train Pack containing a GN&SR Ochre 57XX 0-6-0PT, 2x GN&SR Maroon & Cream Coaches & Resin Model of Oakworth Station. This is No. 1421 produced and includes Certificate. Condition is Excellent Plus in Good to Good Plus Box with some slight scuffing on lid.  
**Estimate:** £80-100

**Auction E069**  
**Model Train Auction - Day 1 on 30 July 2025**



**Lot No. 9**

Graham Farish by Bachmann 372-179 'Duchess' Class 4-6-2 No.46248 "City of Leeds" BR Lined Green Early Emblem. Has Been Weathered, Otherwise Good Condition in Good Box. Plus 3 x 374-475 BR MK3 Sleepers in First Great Western 'Fag Packet' Livery. 1 in Excellent Condition But Missing Couplings and 2 Mint Condition Tissue Wrapped in Boxes.

**Estimate:** £50-60



**Lot No. 10**

Bachmann OO Gauge group of 7x boxed Grouping BR Era Coaches to include Ref. 39-320A Pullman Umber and Cream Bar Second "The Hadrian Bar" plus others (see photo). Conditions are generally Good Plus to Excellent in Good boxes.

**Estimate:** £70-90



**Lot No. 11**

Bachmann Branchline OO Gauge Locomotives group - to include 31-563 BR green V2 Class No.60865, Union of South Africa 60009 A4 in green (Nameplate has lifted somewhat from body & 32-877 Fairburn No.42073 BR lined Black Late Crest. Conditions: Generally Good Plus to Excellent Plus.

**Estimate:** £80-100



**Lot No. 12**

Bachmann Branchline Group of Diesel Locomotives - to include 32-776K Class 37 BR Diesel Locomotive No. D6717 (Weathered), produced exclusively for Bachmann Collectors Club, 32-780W Class 37/0 37025 "Inverness TMD" in BR large logo blue - Weathered - Rails of Sheffield Ltd Edition & 32-028A Class 20 D8169 in BR Green with Indicator boxes. Conditions: Excellent to Excellent Plus in Excellent Boxes.

**Estimate:** £80-100



**Lot No. 13**

Bachmann OO Gauge 32-935 2-car Arriva Trains/Wales Class 150 DMU in Aquamarine and Ivory livery No.150 256, condition Excellent to Excellent Plus in Good Inner Boxes and Fair Outer Sleeve.

**Estimate:** £70-80



**Lot No. 14**

Bachmann Branchline OO Pair of Air Braked Bogie Wagons; 38-201 JPA Bogie Cement Wagon 'Castle Cement' VTG, and 37-327C JGA Bogie Hopper Wagon Buxton Lime Industries. Conditions Are Near Mint to Mint in Good Boxes

**Estimate:** £50-60



**Lot No. 15**

Bachmann Branchline OO Group of Steam Era Rolling Stock. Comprising; 37-225W Set of Three NCB Internal User 16T Mineral Wagons Weathered, Modelzone Exclusive. 37-656 14T Tank Wagon 'ICI', and 34-251 LMS 57' Period 1 Composite Coach No.3605. Conditions Are Near Mint to Mint in Fair to Good Boxes.

**Estimate:** £40-50



**Lot No. 16**

Bachmann Branchline OO Trio of Maroon Mk1 and Mk2 Coaches. Comprising 39-076B Mk1 BCK M35180 (Missing 1 Buffer and Coupling), and 2 x 39-332 Mk2 FK E13773. Conditions Are Good to Excellent in Fair to Good Boxes.

**Estimate:** £50-60

**Auction E069**  
**Model Train Auction - Day 1 on 30 July 2025**



**Lot No. 17**

Bachmann Scenecraft 44-0009 OO Gauge Container Terminal Crane Plus Extras. Scenecraft Resin Container Crane, Has Been Damaged and Requires Re-assembly. Condition Poor to Fair. 44-154 Great Central Platform Ramp (Adapted Platform Only). Vollmer 43636 McCafe Kit. Bachmann 37-538 'Departmental' Brake Van, Marklin 4003 Baggage Car, Graham Farish Scenecraft and Conflux Buildings Plus 1kg artificial Coal. See Photo.

**Estimate:** £30-40



**Lot No. 18**

Bachmann Branchline OO Group of BR Liveried Locomotives. Consisting of; 32-253 WD 'Austerity' 2-8-0 No.90312 Early Emblem (WR) unboxed, 31-102A BR Standard Class 4MT 4-6-0 No.75072 Lined Black Early Emblem BR1B Tender, 31-775 Modified Hall Class 4-6-0 No.6990 "Witherslack Hall" Lined Black Early Emblem and 31-306 Manor Class 4-6-0 No.7822 "Foxcote Manor" Lined Green Early Emblem. Conditions Are Good Plus to excellent in Good Boxes.

**Estimate:** £80-90



**Lot No. 19**

Bachmann 31-2000 (Limited Edition) "Cambrian Coast Express" Set Containing BR Lined Green Manor Class 4-6-0 No.7828 "Odney Manor" along with BR Lined Green 43XX Mogul No.5358 along with 6 x Chocolate and Cream Mk.1 Passenger Coaches (including Auto Buffet Car) Along with From the Footplate Cambrian Coast Express Book by Stephen Austin, Complete with Certificate No.0014 of 1000 produced. Condition is Near Mint to Mint in Excellent Plus Wooden Presentation Box Complete with Outer Transit Box.

**Estimate:** £110-130



**Lot No. 20**

Bachmann OO gauge 35-990 London Underground S Stock Motorised 4 Car Train Pack, this is exclusive for Transport For London. Conditions: Generally Near Mint in Excellent inner boxes and Excellent outer box.

**Estimate:** £200-260



**Lot No. 21**

Bachmann Branchline OO Gauge 35-990C London Underground S stock 4-car EMU, Produced Exclusively for London Transport Museum. Conditions: Generally Near Mint in Excellent Plus inner boxes with Excellent Plus outer box.

**Estimate:** £200-240



**Lot No. 22**

Bachmann Branchline OO Gauge Scenecraft items - to include 44-0015 Post-war station canopy (one leg detached but in packaging), 44-0013 Post-war system-built station, 44-016 Fuel Storage Tanks & 44-129 Fuel Storage Tank (Mino damage to handrails). Conditions: Good to Excellent Plus

**Estimate:** £70-90



**Lot No. 23**

Bachmann Branchline OO Gauge Scenecraft items - to include 44-110 Nissen Hut, 44-0027 Rural Bus depot, 44-0070 Prefab Commercial Building & 44-148 Tyre and Exhaust "Auto Centre". Conditions: Generally Excellent to Excellent Plus

**Estimate:** £60-80



**Lot No. 24**

Bachmann Branchline OO Gauge Hornby (China) Locomotives - R2396 BR Fowler Class Steam Locomotive No. 43924 (Weathered), R2287 BR Fowler Class 4P '42322' weathered, 31-556 2-6-2 LNER V2 Class steam Locomotive No. 3650 & 32-357 2-6-4 Tank Loco Standard Class 4MT No.80079. Conditions: Good Plus to Excellent Plus in Fair to Excellent boxes.

**Estimate:** £80-100



**Auction E069**  
**Model Train Auction - Day 1 on 30 July 2025**



**Lot No. 25**

Bachmann OO 32-286 BR Green 2-Car Class 101 DMU. With small yellow panels to front of each car. Conditions: Good to Excellent in Excellent inner boxes & Good outer box.

**Estimate:** £50-60



**Lot No. 26**

Bachmann OO 32-286 BR Green 2-Car Class 101 DMU. With small yellow panels to front of each car. Conditions: Good to Excellent in Excellent inner boxes & Good outer box.

**Estimate:** £50-60



**Lot No. 27**

Bachmann Branchline OO Gauge & Similar Locomotives - to include 31-958 BR Green 60020 Guillemot, Replica Railways 11014 4-6-0 BR lined black B1 Class 61132 & 37070 Class J72 BR Black '69001'. Conditions: Good Plus to Excellent Plus in Good Boxes.

**Estimate:** £70-90



**Lot No. 28**

Bachmann Branchline OO Gauge BR Coaches - To include 34-375 63ft Thompson 2nd Corridor Coach, 34-400 Composite, Plus others. Conditions: Generally Good Plus to Excellent

**Estimate:** £50-70



**Lot No. 29**

Bachmann Branchline OO Maroon Carriages - 34-376 63ft. Thompson 2nd Class Corridor Coach E1001E in BR Maroon Livery, 39-026 BR Mk1 SK 2nd corridor in maroon E24538 plus others. Conditions: Generally Good Plus to Excellent Plus.

**Estimate:** £50-70



**Lot No. 30**

Bachmann Branchline OO Gauge & Similar Rolling stock - to include Parkside Dundas PC07 BR 12 ton van, 33-825B 25 Ton Queen Mary Brake Van S56299 in BR Bauxite Livery, Dapol HM011 Diesel Brake Tender B964064 in BR Green with small yellow panels - special edition for Hornby Magazine, plus other items. Conditions: Excellent to Excellent Plus in Excellent boxes.

**Estimate:** £60-80



**Lot No. 31**

Bachmann Branchline OO Gauge - 33-856 30 Ton bogie bolster wagon in BR grey, 33-853 30 Ton Bogie Bolster Wagon with Plate Bogies B943293 in BR Brown Livery Plus others. Conditions: Excellent to Excellent Plus.

**Estimate:** £50-70



**Lot No. 32**

Bachmann Branchline OO Gauge & Parkside Dundas - to include 33-751B 16 Ton Steel Mineral Wagon B279900 in BR Grey Livery, PC19 Parkside Dundas BR 16 Ton Mineral Wagon Kit plus others. Conditions: Excellent to Excellent Plus.

**Estimate:** £60-80



**Auction E069**  
**Model Train Auction - Day 1 on 30 July 2025**



**Lot No. 33**

Bachmann OO 32-522NRM Mainline blue livery Deltic Prototype Diesel DP1, produced exclusively for the National Railway Museum. Conditions: Good Plus to Excellent Plus in Excellent box.

**Estimate:** £90-110



**Lot No. 34**

Bachmann Branchline OO Gauge & Lima - 32-428 Class 24 5087 in BR blue, L204944 Class 20 diesel 20121 in BR blue, 32-101 Class 08 Shunter D3729 in BR Green with Warning Stripes & 31-337 Class 04 Shunter D2280 in BR Green Livery with Late Crest & Wasp Stripes. Conditions: Generally Excellent to Excellent Plus.

**Estimate:** £100-120



**Lot No. 35**

Bachmann Branchline OO Gauge & Lima Locomotives - 32-429 Class 24 Derby D5011 in BR green, 31-077 Class 46 D193 Peak in BR Green Livery with Late Crest, L205173b Class 37 D6755 in BR green & L205060 Class 40 D261 in BR Green. Conditions: Excellent to Excellent Plus

**Estimate:** £80-100



**Lot No. 36**

Bachmann Branchline OO Gauge Coaches - including 34-376 63ft. Thompson 2nd Class Corridor Coach E1001E in BR Maroon Livery, 34-426 63' Thompson Composite Brake E1158E in BR maroon plus others. Conditions: Good Plus to Excellent Plus

**Estimate:** £60-80



**Lot No. 37**

Bachmann Branchline OO Gauge locomotives - with 32-555 Peppercorn A1 4-6-2 No. 60130 "Kestrel" (with 247 Developments nameplates pack within box & 32-576 2-6-0 BR Black 43047 Ivatt Class 4. Conditions: Excellent to Excellent Plus.

**Estimate:** £60-80



**Lot No. 38**

Bachmann Branchline OO Gauge & Others Locomotives - to include 32-252 WD Austerity 2-8-0 90445 in BR Black with late crest, 31-552 Class V2 2-6-2 60964 "The Durham Light Infantry" in BR Green with late crest, Dapol D-009 J94 Black with bunker extension & Hornby Locomotive 4-6-2 renumbered to 60045 with Lemberg nameplate in BR green with double chimney & German smoke deflectors. Conditions: Excellent to Excellent Plus

**Estimate:** £80-100



**Lot No. 39**

Bachmann Branchline Hornby (GB/China) & Similar OO Gauge Coaches - to include 39-310B BR Mk1 SP Pullman Second Parlour Umber & Cream 'Car No 349' (With Lighting), R4652 Thompson suburban third E82690E in BR Maroon plus other. Conditions: Appears Excellent to Excellent Plus.

**Estimate:** £70-90

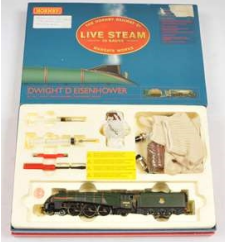


**Lot No. 40**

Hornby (China) OO Gauge & Hornby Tri-ang - with R552 No. 70013 "Oliver Cromwell" & R2234 4-6-0 Loco and Tender King Class "King William IV" No.6002. Conditions: Good to Good Plus.

**Estimate:** £60-80

**Auction E069**  
**Model Train Auction - Day 1 on 30 July 2025**



**Lot No. 41**

Hornby (China) R2277 "Live Steam" BR green A4 Class 60008 "Dwight D Eisenhower", Mention has been made of an issue with the pressure screw, in picture box complete with all relevant tools along with gloves and bottle of live steam oil. Conditions: Generally Good to Good Plus.

**Estimate:** £160-220



**Lot No. 42**

Hornby (China) R8205 Live Steam Controller and Transformer - control set for the Hornby Live Steam Locomotives. Conditions: Good to Good Plus in Good Box.

**Estimate:** £70-90



**Lot No. 43**

Tri-ang OO Gauge & Hornby (China) Rolling stock - to include two pairs of Tri-ang BR Green DMUs, Shell Tanker plus R4264B BR 1st Class Sleeper, R4451 Pullman SR Luggage Van 'S 2464 S' & R4202 BR MK1 Sleeper Coach Midland Region 'M2008' Weathered. Conditions: Good Plus to Excellent in Good Plus to Excellent boxes.

**Estimate:** £70-90



**Lot No. 44**

Hornby Lyddle End Group of Resin Buildings for N Gauge. Including; N8031 Holy Trinity Church x 2, N8053 Double Road Engine Shed (Brick) x 3, N8098 Double Road Engine Shed (Stone), N8079 Main Station Building, N8080 Station Building (Goathland), N8084 Covered Coal Shed. Plus Others, See Photos. Conditions Are Excellent to Mint in Fair to Good Plus Boxes. (34)

**Estimate:** £70-80



**Lot No. 45**

Hornby (China) Pair of Locomotives. Consisting of; R2420 Class 31 BR Diesel Locomotive D5512 Original Green Livery. Has Had Small Yellow Panel Added, 1 NEM Socket and Engine Room Window Missing. Glue and Paint Marks On Body Sides. R3170 Railroad Great Western Liveried Hall, Renumbered/Renamed as 4902 "Aldenhall". Number and Nameplates Misaligned with Excess Glue, with Glue Marks on Locomotive Body. Real Coal in Tender. Otherwise Conditions Are Good in Good Boxes.

**Estimate:** £50-60



**Lot No. 46**

Hornby Pair of Grouping Era Locomotives; R2631 Rebuilt Royal Scot 4-6-0 No.6133 "The Green Howards" in Post-war 1946 LMS Black Lined Livery. R3405 LNER Class J50 0-6-0T No.585 in LNER Plain Black Livery, Labelled as DCC Fitted. Conditions Are Good Plus to Excellent in Good Packaging (J50 is Missing Outer Sleeve).

**Estimate:** £70-80



**Lot No. 47**

Hornby (China) Southern Railway Pair of Tender Locomotives; R3327 SR Class S15 4-6-0 Steam Locomotive No. 824 in Lined Olive Green Livery. Condition is Fair to Good Condition (Some Items Have Been Fixed With Excess Adhesive) in Good Box and Outer Sleeve. R2343 SR Class Q1 0-6-0 No. C8 in Plain Black Sunshine Livery. Condition is Good Plus to Excellent in Fair to Good Box and Outer Sleeve.

**Estimate:** £70-80



**Lot No. 48**

Hornby (China) Group of Tank Wagons and Brake Vans; R6788 3-Pack ICI Methanol 20T Tankers '311/312/313' (Minus Outer Sleeve and Couplings Replaced with Wire Alternative). Good in Similar Boxes. 2 x R6508 BR 20 Ton Brake Van B951410 Bauxite 'Western'. Excellent Plus to Near Mint in Excellent Boxes.

**Estimate:** £50-60

**Auction E069**  
**Model Train Auction - Day 1 on 30 July 2025**



**Lot No. 49**

Boxed Hornby Skaledale, Bachmann Scenecraft and Bagged Scenery Items. Including; R9631 Pickering's Hardware Store, R9630 Holmes Cycles, R9632 Golden Dragon Chinese Takeaway, 44-018 Two Storey Office Block and 2 x 44-019 Two Storey Office Block Extension. Plus Woodland Scenics Bushes, Heki Grass Mat and Bagged Scenics. See Photo.

**Estimate:** £80-90



**Lot No. 50**

Hornby Skaledale and Bachmann Scenecraft Group of Unboxed Resin Buildings. Including; The Railwayman's Arms, Baptist Church, Websters (Engineering) and Brutalist Multi Storey Car Park (Think 'Get Carter') Plus Others. See Photo. (18)

**Estimate:** £80-90



**Lot No. 51**

Hornby (China) R1180 "Postal Express" Train Set Containing 0-4-0T GWR Green Locomotive No.167, GWR Brown and Cream Operating Mail Coach Along with Brown and Cream Clerestory Brake Plus Oval of Track with Point, Controller and Wall Mounted Transformer Along with Trakmat. Conditions Excellent in Good Plus Picture Box.

**Estimate:** £60-80



**Lot No. 52**

Hornby (China) R1155 "Virgin Trains Pendolino" Train Set Containing 4-Car Virgin Trains Class 390 Pendolino Overhead Electric Unit No.390004 "Pendolino Alstom" Along with Oval of Track, Point, Controller, Wall Mounted Transformer and Trakmat. Conditions Are Good in Good Box.

**Estimate:** £70-80



**Lot No. 53**

Hornby (China) Brighton Belle 1934 Umber and Cream 5-car Pullman EMU Consisting of R2987 Containing Power Car No.89, Non-Power Trailer Car No.88 Together with R4512 Car 86, R4513 All 1st Doris and R4514 All 1st Hazel. Loose Footboard on Power Car, Otherwise Excellent Condition in Good Plus to Excellent Boxes. (4)

**Estimate:** £100-120



**Lot No. 54**

Hornby (China) R2194 (Limited Edition) "The Atlantic Coast Express" Train Pack Containing BR Lined Green Late Crest Rebuilt Merchant Navy Class No.35022 "Holland America Line" along with 3 x BR (SR) Green Mk.1 Passenger Coaches with Atlantic Coast Coachboards to Sides (2 x Composite and 1 x Brake 2nd) Plus Certificate No.341 of 2000 Produced, Also in Box Atlantic Coast Headboard for Front of Loco, Conditions are Excellent to Excellent Plus in Good Plus Polystyrene Tray in Good Plus Outer Box.

**Estimate:** £90-110



**Lot No. 55**

Hornby (China) & Lima group of 3x GWR Green Steam Locomotives plus 1x GWR Railcar to include R2098 61xx 2-6-2T No. 6113 plus others (see photo) Conditions are Good Plus to Excellent in Good to Good Plus boxes.

**Estimate:** £70-90



**Lot No. 56**

Hornby (China) R3452 BR Grange Class 4-6-0 No.6825 "Llanvair Grange" Lined Green Late Crest. Condition is Near Mint to Mint in Excellent Box.

**Estimate:** £60-80



## Auction E069 Model Train Auction - Day 1 on 30 July 2025



### Lot No. 57

Hornby (China) group of 5x boxed Pullman Coaches to include R4387 Pullman Bar Car Daffodil Bar Car "Diamond" plus others (see photo). Conditions are generally Good to Excellent in Good boxes.  
**Estimate:** £80-100



### Lot No. 58

Hornby (China) Quintet of Grouping Coaches. Comprising; R4687 BR Collett Composite (L/H) Crimson/Cream, R4407 BR Hawksworth Composite Crimson/Cream and R4816A SR Maunsell Kitchen/Dining Car Olive Green. Conditions Are Excellent Plus to Near Mint in Excellent Boxes.  
**Estimate:** £50-60



### Lot No. 59

Hornby (China) Coach Pack and Unboxed coach to include R4310 "The Blue Pullman" Coach pack containing 3x Pullman Blue & White Mk1 & Mk2 Coaches and an unboxed Virgin Mk3 Coach. Conditions are good to Excellent in Good boxes and outer sleeve.  
**Estimate:** £50-60



### Lot No. 60

Hornby (China) R1071 "Eurostar" Train Set containing 4-car Overhead Electric Eurostar EMU (power and dummy Trailer Cars and a pair of Articulated Centre Cars) along with oval of track, 2 x points, controller, wall mounted transformer and trakmat, Conditions: Generally Good Plus to Excellent Plus in Fair to Good picture box. along with Hornby Track pack C.  
**Estimate:** £80-100



### Lot No. 61

Hornby (China) OO Gauge R9284 Percy & The Mail Train Set. Please note trakmat is missing. Contents are still manufacture tissue wrapped so assumed Mint and DVD is still present in Excellent box.  
**Estimate:** £60-80



### Lot No. 62

Hornby (China) R3686 Peckett W4 "Huntley & Palmers" Locomotive & Wagon Pack. Limited edition. Conditions: Mint and unopened in mailer box.  
**Estimate:** £60-80



### Lot No. 63

Hornby (China) R3219 Limited Edition "Great Western Troop" Train Pack consisting of a 4-6-0 Loco and Tender Great Western green Star Class "Princess Alice" No.4050, 2 x Clerestory 3rd Class Coaches and a Brake Coach. This is No 829 of 1000 produced. Contents are still factory sealed so assumed Mint Except loco (DCC Decoder fitted, Untested, Not ran), in Excellent Plus box with very minor crumple on one corner.  
**Estimate:** £90-110



### Lot No. 64

Hornby (China) OO Gauge Pair of LNER Steam outline Locomotives - With R3465 0-6-2 Lined Black Class N2 No. 4765 & R3405 0-6-0 Black Class J50 Tank loco No.585. Fitted with DCC decoders (untested) Near Mint in Excellent boxes.  
**Estimate:** £80-100

**Auction E069**  
**Model Train Auction - Day 1 on 30 July 2025**



**Lot No. 65**

Hornby (China) OO Gauge R3310 BR green West Country Class No.34006 "Bude", Fitted with DCC decoder (untested). Conditions: Excellent Plus to Near Mint in Excellent Plus to Near Mint box and complete with pictured outer sleeve.  
**Estimate:** £80-100



**Lot No. 66**

Hornby (China) Pair of Steam Locomotives - R3356 BR Class 9F '92021' Crosti Boiler, Weathered (one side of connecting rods have been replaced, plus R3296X 4-4-0 LNER Green 238 Hunt Class "Burton", Both have DCC decoders fitted. Conditions: Excellent To Excellent Plus in Excellent to Excellent Plus boxes.  
**Estimate:** £80-100



**Lot No. 67**

Hornby (China) R2689 Special Edition 4-6-2 LMS maroon and gold Streamlined Princess Coronation Class Steam Locomotive No. 6229 "Duchess of Hamilton", this is part of the NRM collection. DCC Decoder has been fitted (untested) Condition is Mint in Good Plus to Excellent box and outer sleeve.  
**Estimate:** £80-100



**Lot No. 68**

Hornby China OO Group of Hornby Collectors Club Steam Loco's - R3213 0-4-0 SR 3102 Tank, R2960 Pug 0-4-0ST BR Black 51200 (2010), R3069 Industrial 0-4-0T Maroon 11 (2011), R3091 Freelance 0-4-0T Purple 60 (2012). R3292 0-4-0 BR Black 56011 Tank - Hornby Collector Club 2014. Conditions: Excellent Plus to Near Mint in Excellent boxes.  
**Estimate:** £80-100



**Lot No. 69**

Hornby (China) OO Gauge Assortment - to include Hornby Magazine Dapol HM004C BR maroon Stove 6-wheel Brake Coach, R6643C BR Shunters Truck Hallen Marsh 'DW94975', R3953 42021 in BR Black - Club Special, R3247 LB&SCR Terrier 'Whitechapel' No.650, R3775 Shunter - Network Rail (Collector Club) & R3615 Peckett & Sons Green Peckett W4 0-4-0ST No.560. Conditions: Generally Excellent Plus to Near Mint in Excellent Plus boxes.  
**Estimate:** £80-100



**Lot No. 70**

Hornby (China) OO Gauge R2903XS BR green Class 08 Diesel Locomotive No.D3105 fitted with sound & 2037 (limited edition) BR blue Class 37 No.37131 complete with certificate No.532 of 1000 produced. Conditions: Good to Excellent in Good to Good Plus boxes.  
**Estimate:** £80-100



**Lot No. 71**

Hornby (China) R3092 Limited Edition (Coronation Scot) Train pack with a 4-6-2 Loco & Tender LMS Streamline Coronation Class 'Coronation' No.6220 and LMS Coronation Coaches 1st class No.1070, 1st Class 1071 and Brake 3rd No.5812. Complete with Certificate No.268 of 2000 produced. Conditions: Generally Good to Excellent in Good Box.  
**Estimate:** £80-100



**Lot No. 72**

Hornby (China) R8214 Elite Digital Controller Plus two unboxed Select Controllers. (one Select controller transformer has had controller connection cut.) Conditions: Generally Excellent Plus in Good box.  
**Estimate:** £80-100

## Auction E069 Model Train Auction - Day 1 on 30 July 2025



### Lot No. 73

Hornby (China) R2803XS A1A-A1A Railfreight Sector Triple grey livery Class 31 No.31233, this is a factory fitted DCC digital sound loco, one coupling detached but is in box, one buffer head missing and couplings are slightly damaged. Conditions: Mostly Good in Good Gox and picture sleeve.

**Estimate:** £80-100



### Lot No. 74

Hornby (China) R3284TTS (Railroad Edition) 4-6-2 LNER lined apple green A1 Class Loco No.4472 with TTS Digital sound onboard. Conditions: Generally Good Plus to Excellent but missing couplings in Good Plus to Excellent box.

**Estimate:** £80-100



### Lot No. 75

Hornby (China) R3242 2-6-0 BR K1 Class Steam Locomotive No. 62015. Conditions: Excellent Plus in generally Good to Good Plus box and outer sleeve, inner plastic sleeve has some adhesive contamination.

**Estimate:** £50-70



### Lot No. 76

Hornby (China) OO Gauge R3426 0-8-0 BR Q6 Class Locomotive "63429". Condition: Excellent to Excellent Plus in Excellent Plus box and outer sleeve.

**Estimate:** £50-60



### Lot No. 77

Hornby (GB) & Hornby Dublo - to include Coronation Scot LMS 6222 plus two coaches, Flying Scotsman and, In Hornby Dublo, 'Duchess of Montrose' without tender & missing leading bogie. Conditions: Fair to Good.

**Estimate:** £50-70



### Lot No. 78

Hornby (GB/China) OO Gauge Lima & Jouef locomotives - to include R2913 Thompson Class L1 (Spares/Repair) Missing front bogie, R2152 Tender Drive No.60085 "Manna", Jouef 8913 Class 40 D210 'Empress of Britain' & Lima Class 33 5115MW D6506 in BR Green. Conditions: Generally Fair to Good in Fair to Good Boxes.

**Estimate:** £80-100



### Lot No. 79

Hornby (GB) Sir Ralph Wedgwood set - Containing two A4 Locomotives, 'Sir Ralph Wedgwood' in BR Green 60006 and 'Commonwealth of Australia 60012, (this is supplied with a Bachmann tender). Contained within a Wooden presentation case, a pin has been removed and the catches are slightly damaged. Conditions: Fair to Good.

**Estimate:** £70-90



### Lot No. 80

Hornby (GB) Metcalfe & Similar Buildings items - to include assorted platform sections, domestic houses, Oxford Diecast vehicles plus other scenic items. Conditions: Good to Good Plus.

**Estimate:** £70-90



## Auction E069 Model Train Auction - Day 1 on 30 July 2025



### Lot No. 81

Hornby and Airfix Group of Locomotives and Wagons, Boxed and Unboxed. Including; R057 and R779 Caledonian 0-4-0ST Pugs Boxed, Airfix 54120 Rebuilt Royal Scot 4-6-0 No.6103 "Royal Scots Fusilier" LMS Black. 4 x TTA Tank Wagons (1 Repainted), 2 x Airfix Tizer Box Vans Plus Others. Conditions Are Fair to Good, See Photo. (12)

**Estimate:** £40-50



### Lot No. 82

Hornby Railways R696 "Intercity 225" Train Set - with Class 91 Overhead Electric Locomotive. Includes; Locomotive, Driving Van Trailer and 2 x Mk4 Tourist Open Coaches in Intercity Swallow livery. Plus Oval of Track and Controller. Conditions Are Good in Good Box.

**Estimate:** £40-50



### Lot No. 83

Hornby Railways R591 "Night Mail" Train Set. Intercity Class 47 Plus 1x Royal Mail Operating Mail Coach, 2x Royal Mail Ancillary Coaches, Track and Controller. Operating Ramps for Mail Coach Are Present, But No Lineside Pick Up/Drop Off Equipment. Conditions Are Good to Good Plus in Good Box.

**Estimate:** £40-50



### Lot No. 84

Hornby (GB) OO Gauge items - to include GWR Pannier Tank 8751, Class 37 130 along with an assortment of Private owner wagons and InterCity carriages plus other items. Conditions: Fair to Good.

**Estimate:** £50-70



### Lot No. 85

Hornby (GB & China) and Similar OO Gauge group of Train Set, Wagons, Sectional Track and Lineside accessories to include Hornby (China) R. 274 Victorian Shops plus others (see photo). Conditions are Fair to Excellent (unchecked for completeness or correctness) in Fair to Good boxes.

**Estimate:** £40-60



### Lot No. 86

Hornby R.789 BR High Speed Train Set & Extras. R069 Blue/Grey HST Power & Dummy Car Plus R439 Shorty Mk3 Coach. Track and Power Clip (No Controller). National Benzole Tank Wagon (Ladders Broken), LNER Toad E Brake Van and 1979 Hornby Railways Catalogue. Conditions Are Fair to Good, in Fair Train Set Box.

**Estimate:** £40-50



### Lot No. 87

Hornby (GB) R2002 GNER 225 Pack containing Class 91 No. 91019 "Scottish Enterprise" 2 x Mk4 Coaches and 1 x DVT Trailer Car 82204. Plus 2 x GNER Mk4 Coaches and 2 x GNER Mk3 Coaches (1 of Each Boxed) Conditions are Good Plus to Excellent in Good Boxes. (5)

**Estimate:** £80-100



### Lot No. 88

Hornby (GB) R2073 Class 110 BRCW 3-Car DMU in Blue/Grey Livery Boxed. Good Plus Condition in Good Box. Plus 6 x Mk1 and Mk2 Blue/Grey Coaches Hornby and Lima, Fair to Good Condition. See Photo.

**Estimate:** £50-60

## Auction E069 Model Train Auction - Day 1 on 30 July 2025



### Lot No. 89

Mostly Hornby Group of Boxed Wagonry, Inc 'Date' Wagons. Including; 5 'Date' Wagons 1998-2002 Inclusive, Hornby Roadshow 2000, R6090 Vee Tank Wagon Hornby Collector Exclusive, Dapol Vent Van 'NYMR', Bachmann 37-105 'George & Mathews' and 33-300A BR Grey Toad Plus Others. Conditions Are Good to Good Plus in Similar Boxes. See Photo. (16)

**Estimate:** £50-60



### Lot No. 90

Hornby Railways R1001 Flying Scotsman Set; LNER Apple Green A1 Class Pacific No.4472 "Flying Scotsman", 3 x LNER Gresley Style Teak Coaches (2 x Composite and 1 x Brake Composite) Along with Track, Controller and Trakmat. Conditions Are Fair to Good in Fair Polystyrene Tray and Outer Box. Contents Unchecked for Completeness.

**Estimate:** £40-50



### Lot No. 91

Hornby (GB/China) OO Gauge and Similar items - to include a pair of HM4000+ Controllers R8082A, Bachmann DC Controller with Wall mounted power adapter, Lima Class 08 Plus other items. Conditions: Fair to Good Plus, where relevant in Fair to Good Boxes.

**Estimate:** £70-90



### Lot No. 92

Hornby (GB) OO Gauge items - to include Battery Operated set Rural Rambler (unchecked for completeness, along with R.431 Southern Region coaches, LNER Teak coaches, R.334 Diesel Centre Cars plus other items. Conditions: Excellent to Excellent Plus in Fair to Excellent Plus boxes.

**Estimate:** £60-80



### Lot No. 93

Hornby (GB) R673 High Speed Train Set plus other items - Unchecked for completeness, plus R.150 L&Y ST Loco plus assortment of wagons. Conditions: Generally Good to Excellent in Poor to Fair boxes.

**Estimate:** £50-70



### Lot No. 94

Bachmann OO Gauge Hornby (GB) & Similar Locomotives Plus one tender - assortment of LNER, N.E. LMS and other liveries. Some have been modified with additional transfers, finished to a fair standard. Conditions: Fair to Good.

**Estimate:** £80-100



### Lot No. 95

Hornby OO Gauge Tri-ang Plus Hornby-Dublo points and crossings - group of items including Blue/Grey Intercity coaches plus vented sleeper coach and Assorted wagons. Conditions: Good to Good Plus

**Estimate:** £50-70



### Lot No. 96

Hornby (GB) OO gauge items - to include LNER Flying Scotsman (rear bogie detached and chassis loose from the body), LNER Teak coach sets, Breakdown set plus other items. Conditions: Poor to Good.

**Estimate:** £50-70



**Lot No. 97**

Hornby (China/GB) Peco Plus others - to include a number of points and some sectional track, plus 2x ST-296 and one ST-290 platform parts along with a trakmat and static display models. Conditions: Generally Good to Good Plus  
**Estimate:** £40-50



**Lot No. 98**

Hornby GB OO Gauge Plus other items - to include Thomas the Tank Engine, Plus other locomotives and wagons, also included in Gaugemaster GMC-PM20D. Conditions: Fair to Near Mint.  
**Estimate:** £60-80



**Lot No. 99**

Heljan OO Gauge 4700 BR two tone Green D1100 Class 47 Diesel Loco. Comes with detailing parts. Conditions: Excellent Plus in Good Plus to Excellent window box.  
**Estimate:** £70-90



**Lot No. 100**

Lima OO Gauge Jouef & Similar - To include Hornby (GB) 9F, Jouef D285 in BR Green Plus spares/repairs items. Conditions: Poor to Fair  
**Estimate:** £50-70



**Lot No. 101**

Lima OO Gauge Plus Hornby Tri-ang Locomotives - to include Network SouthEast Class 50s, Class 47 in RES Livery 'The Gloucestershire Regiment' 47569, Plus others. Conditions: Fair to Good, Some locomotives are missing buffers.  
**Estimate:** £70-90



**Lot No. 102**

Lima & Hornby (GB) OO Gauge Coaches and Continental Wagons Assortment - to include Lima Blue/Grey InterCity coaches plus Hornby Executive InterCity Livery coaches plus other items. Conditions: Fair to Good.  
**Estimate:** £50-70



**Lot No. 103**

Lima OO Gauge group of 3x BR Diesel Locomotives to include Ref. L204668 BR Blue Class 52 Locomotives No. D1043 "Western Duke" plus others (see photo). Conditions are Good Plus to Excellent (one Locomotive has been repainted) in Fair to Good boxes.  
**Estimate:** £50-70



**Lot No. 104**

Lima OO Gauge group of 4x BR Blue Diesel Locomotives to include 2x Ref 5107MW Class 09's No. 09026 plus others (see photo). Conditions are generally Good to Excellent in Good boxes.  
**Estimate:** £70-90



**Auction E069**  
**Model Train Auction - Day 1 on 30 July 2025**



**Lot No. 105**

Lima HO Scale Ref. 208157LP SBB/CFF (Swiss) Green AE 4/4 II Electric Locomotive. Condition is Excellent in Good box.

**Estimate:** £20-30



**Lot No. 106**

Dapol MJA GBRf Bogie Box Van Twin Packs x 4. Comprising 4F-025-008/9/10/14 Packs in GB Railfreight Dark Blue Livery. Conditions Are Near Mint to Mint in Excellent Boxes with Good Plastic Outer Sleeves.

**Estimate:** £90-110



**Lot No. 107**

Dapol for Rail Express

Dapol for Rail Express, Fastline Freight FEA\_B "Twin" Container Flat x 2. Wagon A; 643001 & 643002 and Wagon B; 643005 and 643006. 3 of the 4 Wagons Have Splits on the Underside Caused By Mazak Rot, However This Is Not Visible Under Normal Circumstances and Does Not Affect the Running of These Wagons. Conditions Are Otherwise Excellent in Good Boxes.

**Estimate:** £50-60



**Lot No. 108**

Dapol OO Gauge 6 x HIA Freightliner Heavy Haul Limestone Hopper Wagons comprising 3 x Freightliner Green Livery (4F-026-010, 4F-026-021 and 4F-026-027) and 3 x Freightliner White Livery (4F-026-011, 4F-026-012 and 4F-026-023), Condition Are Excellent Plus to Near Mint in Good to Excellent Boxes. (6)

**Estimate:** £70-90



**Lot No. 109**

Dapol produced for Hatton's OO Gauge Pair of LMS & Ex-LMS Diesel Locomotives comprising of Ref. 10000AP LMS Livered No. 10000 & Ref. 10001FP BR (unbranded Livery) No. 10001. Conditions are Near Mint in Good Plus boxes.

**Estimate:** £120-140



**Lot No. 110**

Dapol OO Gauge & Hornby (China) Rolling stock - Assortment of hoppers vans and tankers to include R4455B BR Composite Coach 'E18207E' plus 2001 and 2004 Hornby year vans. Conditions: Fair to Good some items have incorrect internal retention plastics.

**Estimate:** £40-60



**Lot No. 111**

Dapol OO Gauge 21 Hopper wagons - rake of 28 wagons in various production period boxes. Conditions: Appears Excellent to Excellent Plus.

**Estimate:** £50-70

## Auction E069

### Model Train Auction - Day 1 on 30 July 2025



#### Lot No. 112

Dapol OO Gauge 21T Hopper wagons - rake of 36 wagons in various production period boxes, some are undecorated. Conditions: Appears Excellent to Excellent Plus.

**Estimate:** £60-80



#### Lot No. 113

Dapol & Hornby (China) OO Gauge 21T Hopper wagons - rake of 36 wagons in various production period boxes, some are undecorated. Conditions: Appears Excellent to Excellent Plus.

**Estimate:** £80-100



#### Lot No. 114

Dapol OO Gauge Lima & Similar coaches - Varied assortment including Hornby (GB) Pullman coaches, plus Crimson & Crimson/Cream BR Coaches. Please note: some have had their coupling parts removed. Conditions: Generally Fair to Good

**Estimate:** £50-70



#### Lot No. 115

Revolution Trains for Kernow SB008A IZA/Habfis Twin Van Cargowaggon Original Livery. Mint Condition in Near Mint Boxes and Outer Sleeve.

**Estimate:** £50-60



#### Lot No. 116

Revolution Trains for Kernow SB008B IZA/Habfis Twin Van Cargowaggon Original Livery. Mint Condition in Near Mint Boxes and Outer Sleeve.

**Estimate:** £50-60



#### Lot No. 117

Revolution Trains for Kernow SB008C IZA/Habfis Twin Van Cargowaggon Original Livery. Mint Condition in Near Mint Boxes and Outer Sleeve.

**Estimate:** £50-60



#### Lot No. 118

Revolution Trains OO Gauge 00-IWA-Cargo1 'Sfins-2' Twin Pack Cargowaggon Livery. Condition is Near Mint to Mint in Excellent Packaging.

**Estimate:** £50-60



#### Lot No. 119

Revolution Trains OO Gauge 00-IWA-Cargo2 'Sfins-2' Twin Pack Cargowaggon Livery. Condition is Near Mint to Mint in Excellent Packaging.

**Estimate:** £50-60



**Lot No. 120**

Dapol and Airfix Wagon Group. Comprising; Dapol 5-Plank Open North Staffordshire Railway (The "Knotty")-Post 1912 Livery. Dapol B171 7 Plank 'Bass', and 6 x Airfix 54052-8 BR Lowmac with DR.X Module Pack B. Conditions Are Good Plus to Excellent in Good Boxes. (8)  
**Estimate:** £40-50



**Lot No. 121**

Airfix Railways Group of Great Western Railway Liveried Locomotives. Comprising; 54150-1 61xx 2-6-2T 6110 Boxed, 54124 Castle Class 4-6-0 4073 "Caerphilly Castle" (Damaged Drawbar) and 2 x 54152 14xx 0-4-2T 1466 (1 Missing Couplings). Conditions Are Fair to Good. See Photo.  
**Estimate:** £40-50



**Lot No. 122**

Hornby (GB) & Hornby-Tri-ang Caledonian Railway Group of 1x Locomotive and 4x Coaches to include Hornby-Tri-ang R.553 Caledonian Blue Single 4-2-2 No. 123 with R.554 Tender (please note box states the Locomotive is a 4-2-4 which is incorrect however this appears to be a factory applied issue) plus others (see photo). Conditions are Good Plus to Excellent in Good to Good Plus boxes with some stickers applied to them.  
**Estimate:** £50-70



**Lot No. 123**

Tri-ang Hornby, Wrenn, and Similar group of 16x Wagons and Coaches to include 4x R.333 Great Western Railway Clerestory Brake Coaches plus others (see photo). Conditions are generally Good to Excellent in Good to Good Plus boxes.  
**Estimate:** £60-80



**Lot No. 124**

Airfix OO gauge group of 3x Steam Locomotives and 6x Coaches to include Ref. 54120-0 LMS Black Royal Scot 4-6-0 No. 6103 "Royal Scots Fusiliers" plus others (see photo). Conditions are generally Good Plus to Excellent Plus in Good boxes  
**Estimate:** £60-80



**Lot No. 125**

Trix Trains OO Gauge Large group of Locomotive, Wagons and Coaches (including Kitbuilt) to include Trix Ref. 1188 LNER Grey A4 Pacific No. 2509 "Silver Link" plus others (see photo). Conditions are generally Good to Excellent (kits built to a Good standard) in Good boxes (please note some boxes have has plastic inset replaced by foam).  
**Estimate:** £80-100



**Lot No. 126**

Hornby (GB) and Tri-ang group of 12x unboxed Coaches (see photo). Conditions are generally Good to Good Plus.  
**Estimate:** £50-60



**Lot No. 127**

Hornby (GB & China) pair of GWR Train Packs comprising of Hornby (GB) R.2048 King Train which include British Railways (WR) Green King Class No. 6009 "King Charles II" 3x GWR Coaches, this is No. 712 of 1500 produced and includes certificate, and Hornby (China) R. 2023 "Great Western Express" Passenger Train Pack which includes GWR Hawksworth County Class No. 1004 "County of Somerset & 3x GWR Chocolate and Cream Coaches. Conditions are Excellent to Excellent Plus in Good boxes (some ware and tare) is evidence on boxes and lids.  
**Estimate:** £80-100



**Auction E069**  
**Model Train Auction - Day 1 on 30 July 2025**



**Lot No. 128**

Hornby (GB & China) 2x Locomotives and Train Pack to include (GB) R.2088 BR Green Castle Class Locomotive No. 5097 "Sarum Castle", Hornby (GB) R737 BR Blue King Class No. 6000 "King George V" & Hornby (China) (Limited Edition) R.2090 "Torbay Express" Train Pack which includes BR Green Castle Class Locomotive No.5004 "Llanstephan Castle" and 3x BR Crimson & Cream Mk1 Coaches, No. 941 of 2000 produced complete with Certificate. Conditions are generally Excellent to Excellent Plus in Good to Good Plus boxes.

**Estimate:** £90-110



**Lot No. 129**

Hornby (GB & China), Bachmann and Similar mixed group of 18x unboxed Grouping Era Coaches (see photo). Conditions are Good to Excellent.

**Estimate:** £60-80



**Lot No. 130**

Hornby (GB), Bachmann and Similar mixed group of 12x unboxed Steam & Diesel Locomotives plus 1x Blue Pullman DMU (see photo). Conditions are generally Good to Excellent.

**Estimate:** £80-100



**Lot No. 131**

Hornby (GB & China), Bachmann and Similar mixed group of 22x unboxed BR Era Coaches (see photo). Conditions are Good to Excellent.

**Estimate:** £80-100



**Lot No. 132**

Hornby (GB), Bachmann and Similar OO Gauge mixed group of 9x boxed coaches to include Hornby (GB) R.416 Royal Mail Letters Operating TPO plus others (see photo). Conditions are generally Good to Excellent in Good to Good Plus boxes.

**Estimate:** £70-90



**Lot No. 133**

Hornby (GB & China) and Bachmann OO Gauge group of 7x boxed Grouping Era Coaches to include Bachmann Ref. 34-377 LNER Post War Brown Thompson 63' 3rd Corridor plus others (see photo). Conditions are generally Good to Excellent in Good boxes.

**Estimate:** £50-70



**Lot No. 134**

Hornby (GB & China) and Mainline OO Gauge group of 9x boxed GWR Coaches to include Hornby (China) R4119B Clerestory 3rd Coach No. 950 plus others (see photo). Conditions are generally Good to Excellent in Good boxes.

**Estimate:** £70-90



**Lot No. 135**

Hornby (GB & China) group of boxed and unboxed Thomas the Tank Engine Related Items including GWR 0-6-0PT "Duck" and R.120 Express Train Cream and Green Composite Coach. Conditions are generally Good to Good Plus in Fair box.

**Estimate:** £30-40

**Auction E069**  
**Model Train Auction - Day 1 on 30 July 2025**



**Lot No. 136**

Hornby (GB & China) and Lima OO Gauge group of 6x boxed Modern Era Coaches to include 3x Hornby (China) First Great Western Mk3 Night Riviera Sleeper Coaches No. 10601 plus others (see photo). Conditions are generally Good to Excellent in Good boxes.

**Estimate:** £60-80



**Lot No. 137**

Hornby (China & GB) and Tri-ang group of 6x Steam and Diesel Locomotives to include Hornby (China) Ref. 2150 Collection Edition Class 0F 0-4-0ST No. 2000 "Millenium" plus others (see photo). Conditions are generally Good to Excellent (one item is in incorrect box ) in Poor to Good boxes.

**Estimate:** £50-70



**Lot No. 138**

Marklin Mini-club Z Gauge wagons & coaches - to include Marklin Insider wagons 2x 80315 Hoppers & 3x 80316 vans plus 8720 1st Class coach in 'Pop' livery orange and stone grey of the DB. Plus other wagons. Conditions: Excellent to Excellent Plus

**Estimate:** £90-110



**Lot No. 139**

Marklin Mini-club Z Gauge wagons - to include 3x 8619, 82204, 8668 Plus Club Wagen 1993, Plus others. Conditions: Excellent to Excellent Plus in Excellent to Excellent Plus Cases.

**Estimate:** £80-100



**Lot No. 140**

Marklin Z Gauge Show edition wagons - to include 61 Years of HO with a clear section of 3-Rail HO track and Das Gleis container wagon. Markin Millenium Edition van with CD and Tinned Museum van and motor vehicle set plus Kapuzinerkresse flower seeds. Conditions: Excellent Plus to Near Mint in Excellent Plus to Near Mint cases/boxes.

**Estimate:** £50-60



**Lot No. 141**

Marklin Mini-club Z Gauge Wagons and coaches selection - to include 8215 Viessmann & Miele Covered Vans 8620 Transformer bogie wagons, 8690 DB Regional set - North with Iglo reefer, AEG container car, BEB tank car, Echon-Vose steel coil car and Scleswag transformer car, 3 type Fals hopper cars, privately owned by the firm Schaufele. Plus other items. Conditions: Generally Excellent to Excellent Plus in Excellent Cases and boxes.

**Estimate:** £100-120



**Lot No. 142**

Marklin Mini-club Z Gauge Track items - to include 8190 Set-E2x 8566 & 8565 Points, pack of 8500 track, plus 8990 Fueling stage Plus other items. Conditions: Good Plus to Excellent Plus in Fair to Excellent boxes.

**Estimate:** £60-80



**Lot No. 143**

Marklin Mini-club Z Gauge wagons - to include 82380 Sliding Wall Wagon in DB livery, Marklin Insider 2002 edition 80312, plus many others. Conditions: Generally Excellent to Excellent Plus in Excellent cases, two vans are missing bases but have lids.

**Estimate:** £90-110

## Auction E069 Model Train Auction - Day 1 on 30 July 2025



### Lot No. 144

Marklin Mini-club Z Gauge train set 81560 - Appears Complete but unchecked, with Locomotive, flatbed and van plus controller, instructions and track. Conditions: Excellent to Excellent Plus in Excellent Box.  
**Estimate:** £100-120



### Lot No. 145

Marklin Mini-club Z Gauge items - to include box 8594 with One length of track included, 8827 Class 41 220 & 8166S set with Locomotive, wagons, track & Controller, unchecked for completeness. Conditions: Excellent to Excellent Plus in Generally Good plus to Excellent Plus boxes.  
**Estimate:** £80-100



### Lot No. 146

Marklin Z Gauge mixed group of Locomotive, boxed and unboxed Pointwork and Accessories to include 8562L Left Hand point plus others (see photo). Conditions are generally Fair to Excellent in Good boxes.  
**Estimate:** £50-60



### Lot No. 147

Rivarossi N Scale Model Power & Bachmann locomotives - tom include Model Power 7507 Tram car set, Atlas 2185 Baltimore & Ohio, Rivarossi 4093 B&O Plus others. Conditions: Good to Good Plus  
**Estimate:** £70-90



### Lot No. 148

Rivarossi N Scale 'The Alton Limited' 'Bloomington' Rake of carriages. Some wheels are showing mild oxidation. Conditions: Fair to Good.  
**Estimate:** £50-70



### Lot No. 149

Rivarossi N Scale 'Pennsylvania' Railroad rake of coaches. Some wheels are mildly oxidized, Conditions: Fair to Good.  
**Estimate:** £50-70



### Lot No. 150

Graham Farish by Bachmann Modern Diesel/Electric Pair, Consisting of 371-800 Class 91 "York Minster" with DVT 91126 in GNER Livery. Excellent Condition in Good Box. 371-025 Class 20 20 906 in DRS Livery. Excellent Condition in Good Box.  
**Estimate:** £70-80



### Lot No. 151

Graham Farish by Bachmann Pair of Diesels; 371-076 Class 25 D7667 BR Blue Weathered. Excellent Condition in Good Box, Stated as DCC Fitted. 371-401 Class 52 D1030 "Western Musketeer" BR Blue SYP. Excellent Condition in Good Box.  
**Estimate:** £70-80



**Auction E069**  
**Model Train Auction - Day 1 on 30 July 2025**



**Lot No. 152**

Graham Farish by Bachmann Pair of WR/LMR Express Steam Locomotives; 372-031 Castle 4-6-0 No.7004 "Eastnor Castle" BR Lined Green Late Crest, and 370-100 Duchess 4-6-2 No.46245 "City of London" BR Lined Green Early Emblem. Both Are in Excellent Condition in Fair to Good Crystal Cases without Card Sleeves.

**Estimate:** £60-70



**Lot No. 153**

Graham Farish (Poole) Trio of Diesel Locomotives; 8115 Class 40 D348 BR Green, 8005 Class 47 47 712 "Lady Diana Spencer" BR Large Logo Blue (1 Buffer Missing) and 80211 Class 47 747 "Graham Farish" Virgin Red. Conditions Are Good Plus to Excellent in Fair Boxes.

**Estimate:** £50-60



**Lot No. 154**

Graham Farish (Poole) Trio of Steam Locomotives, 1705 General Purpose Tank 47313 BR Black Early Emblem. 1841 LMS Fowler 4F 0-6-0 No.4232 Plain Black and 1845 BR Fowler 4F 0-6-0 44370 Plain Black Late Crest. All in Good Plus Condition in Fair to Good Boxes.

**Estimate:** £50-60



**Lot No. 155**

Graham Farish (Poole and China) Unboxed Pair of Multiple Units. 8148 Class 101 3-Car Unit L832 in Network South East Bright Blue and 371-050 Class 158 2-Car Unit 158783 in Central Trains Green. Both Are in Good to Good Plus Condition.

**Estimate:** £60-70



**Lot No. 156**

Graham Farish (Poole and China) Trio of Diesel Locos Plus Multiple Unit. 371-008 Class 08 13029 in BR Black Unboxed. 1005 Class 08 D4019 BR Green Wasp Stripes Unboxed. 8067 Class 31 31 421 "Wigan Pier" Regional Railways (In Minitrix Box, Missing 1 Coupling) and 8133 Class 101 2-Car DMU in BR Green SYP Boxed (Missing Couplings). Conditions Are Generally Good to Good Plus.

**Estimate:** £60-70



**Lot No. 157**

Graham Farish (Poole) Trio of Steam Tender Locos. 1201 LMS 4P Compound 4-4-0 No.1111 LMS Lined Maroon Boxed. 1503 SR Merchant Navy Air Smoothed 4-6-2 No.21C17 "Belgian Marine" SR Malachite Green Boxed, and 151A BR Rebuilt West Country 4-6-2 No.34012 "Launceston" BR Green Late Crest Unboxed. Conditions Are Good Plus to Excellent.

**Estimate:** £60-70



**Lot No. 158**

Graham Farish (Poole) Steam Locomotive and Multiple Unit Pair. 1845 Fowler 4F 0-6-0 BR Plain Black 44370 Later Crest Boxed, and 8133 BR Class 101 2-Car Multiple Unit BR Green SYP Unboxed. Conditions Are Good to Good Plus.

**Estimate:** £50-60



**Lot No. 159**

Graham Farish (Poole) Trio of J94/Austerity Tanks Unboxed. 1016 68079 BR Black Early Emblem, 1017 NCB Blue 61, and 8540 No.7 "Robert" Industrial Green. Conditions Are Fair to Good Plus.

**Estimate:** £50-60

**Auction E069**  
**Model Train Auction - Day 1 on 30 July 2025**



**Lot No. 160**

Graham Farish (Poole and China) Trio of Tank Locomotives. 1702 General Purpose 0-6-0T Apple Green (Repainted) Boxed, NE1 GWR 94xx 0-6-0PT and 371-903 57xx 0-6-0PT 5796 BR Black Early Emblem. Conditions Are Good to Good Plus in Similar Box (For GP Tank).

**Estimate:** £50-60



**Lot No. 161**

Graham Farish (Poole and China) Pair of Unboxed LMR/ER Pacifics. 1827 LNER Class A3 No.60052 "Prince Palatine" BR Green Late Crest. 370-100 LMS Duchess Class 46245 "City of London" BR Green Early Emblem. Conditions Are Good to Good Plus, Although Dusty on One Side.

**Estimate:** £50-60



**Lot No. 162**

Dapol N Gauge Group of Boxed Rolling Stock, Consisting of; NC011/12 Autocoaches, NC-029B/030G Dogfish, NB-028/031/032 6-Wheel Milk Tanks, NB-009/018 Gunpowder Vans and NB-025 & Plank Wagon "Hartnell". Conditions Are Excellent to Near Mint, in Good to Good Plus Boxes.

**Estimate:** £50-60



**Lot No. 163**

Graham Farish (Poole and China) Group of BR Mk Coaches, To Include; 3 x 374-055 SK Blue/Grey, 374-080 BCK Blue/Grey, 374-125 GUV Blue, 2 x 374-053 SK Maroon, 374-078 BCK Maroon, 374-102 RMB Maroon, 374-253 CK Maroon. and 3 x SR Green Poole Era Mk1. Conditions Are Good Plus to Excellent in Good Boxes.

**Estimate:** £50-60



**Lot No. 164**

Graham Farish (China) Pair of Steam Locomotives in BR Livery; 372-050 Fowler Class 4F 44018 BR Black Early Emblem (Has Been DCC Fitted), and 371-927 GWR 8750 Class Pannier Tank 4672 in BR Black Late Crest. Both in Good to Good Plus Condition in Non Original Boxes.

**Estimate:** £50-60



**Lot No. 165**

American N Gauge Union Pacific Diesel Quartet; 2 x Bachmann 61251 GP50 (1 Boxed and Marked as DCC Fitted), Atlas 4004 SW1500 D.S.1670. Bachmann 51-0640-01 GE U36B #824 Plus Con-Cor/Kato Heavyweight Car. Conditions Are Good to Good Plus.

**Estimate:** £50-60



**Lot No. 166**

American N Gauge Steam Locomotives and Heavyweight Passenger Cars; Milwaukee 4-6-2 #6139 and 3 Heavyweight Passenger Cars. Bachmann Spectrum 81656 USRA Light Mountain Missouri Pacific #5305 and Bachmann 50552 USRA 0-6-0 A.T. & S.F. #3284. Conditions Are Good to Excellent in Similar Boxes.

**Estimate:** £50-60



**Lot No. 167**

American N Gauge New York Central Group; Atlas Alco RS-3 #8293 Boxed, 9 Passenger Cars, 2 Express Box Cars and Railway Post Office (Requires Bogies). Conditions Are Fair to Good Plus. Foam Lined Carrying Case For Some Stock.

**Estimate:** £50-60



**Lot No. 168**

American N Gauge U-Boats, Geep and Equivalent Stock; Bachmann 64068 U-36B CSX #5542 Marked As DCC Fitted (No Couplings), Bachmann 64053 U-36B Burlington Northern #5491 Marked As DCC Ready (No Couplings), Bachmann 61291 GP50 Norfolk Southern #6551 (Possibly DCC Fitted), Con-Cor Auto Rack BNSF, and 2 x Roundhouse 50' Hi-Cube Box Cars D7RGW/B&O. Conditions Are Good to Good Plus in Fair to Good Boxes.

**Estimate:** £60-70



**Lot No. 169**

American N Gauge Locomotive Group; E-R Models 81360 Baldwin RF-16 Sharknose A & B Set Monongahela #1205/3708, Bachmann GP50 Santa Fe #8759 (Marked as DCC Fitted, No Couplings), and Bachmann 64052 U-36B Santa Fe #353 Silver & Red (Only 1 Coupling). Conditions Are Good Plus to Excellent in Good Boxes.

**Estimate:** £50-60



**Lot No. 170**

American N Gauge Diesel Group; Life-Like 7629 FA2/FB2 Set Baltimore & Ohio #4019/#5002, Con-Cor EMD MP-15 Switcher Burlington #576, and Bachmann FP-7 Amtrak #505 Unboxed. Conditions Are Good to Excellent in Similar Boxes (Where Boxed).

**Estimate:** £50-60



**Lot No. 171**

Bachmann American N Gauge Group, Consisting of; 60066/60090 Plymouth Diesel Switchers CB&Q/Yellow (Stated as DCC Fitted). 61090 Brill Trolley 'Main Street' DCC Fitted, Plus 5 x Box Cars/Reefers (1 Atlas) and Chessie System Caboose. Conditions Are Good to Excellent in Similar Boxes.

**Estimate:** £50-60



**Lot No. 172**

Lima and Minitrix British N Gauge Group; 4 x Lima Deltic (2 x Green/2 x Blue), Class 86 Electric Blue SYP, Boxed LMS 4f 0-6-0 4683, Boxed Freelance Diesel Shunter in BR Green, and 3 x Minitrix Dock Shunter (1 Stripped of Paint). Conditions Are Good to Good Plus.

**Estimate:** £50-60



**Lot No. 173**

Arnold & Minitrix Continental N Gauge Group; Minitrix SBB/CFF Re6/6/ Electric Locomotive (In Roco Box), Arnold Rapido DB 4 Wheel Railbus and 2 Trailers. Minitrix 13590/15299 2 x Red Bogie Crane Wagon with Match Truck. Conditions Are Fair to Good in Similar Boxes.

**Estimate:** £50-60



**Lot No. 174**

Roco, Fleischmann and Trix DB N Gauge Group; Roco 23271 Class BR320 V320 001, Fleischmann 7233 Class BR210 210 004-8, Trix BR 221 137-3 and 4 x Trix /Minitrix DB Bogie Coaches in Green. Conditions Are Fair to Good in Similar Boxes.

**Estimate:** £50-60



**Lot No. 175**

Atlas, Fleischmann and Minitrix Continental N Gauge Group; 3 x Atlas and 1 x Minitrix DB BR260/261 Diesel (3 x Atlas Boxed), 3 x Fleischmann/Minitrix Small Steam Tank Locomotives. Plus Atlas Interfrigo Reefer Car and Minitrix 13137 4 Wheel Open Balcony Coach. Conditions Are Fair to Good Plus in Similar Boxes.

**Estimate:** £60-70





**Lot No. 176**

Micro Ace and Kato Japanese N Gauge Group; 2 x Micro Ace A9253 EF61-200 Electric Locomotives (Have Been DCC Fitted). Kato 14-070 4 Wheel Tram (DCC Fitted). Kato 161-300 Centre Cab Bo-Bo Diesel in JR Livery and Kato 3009-3 ED75 Bo-Bo Electric. Conditions Are Good Plus to Excellent in Similar Boxes.

**Estimate:** £60-70



**Lot No. 177**

Bachmann American N Gauge Steam Era Coach Group; Bachmann Plus Boxed Coaches from the Pennsylvania RR (9) and Baltimore and Ohio (7), Plus Unboxed Con-Cor Pennsylvania REA Car. Conditions Are Excellent in Good Boxes.

**Estimate:** £50-60



**Lot No. 178**

Graham Farish (Poole) and Peco Boxed N Gauge Wagons Group. To Include; TEA 100T Tanker, 2 x Freightliner with Containers, 12 x Private Owner and SR Wagons, 12 x Peco Wagons including 5 x Blue Grain and 2 x Minitrix. Conditions Are Good to Good Plus in Similar Boxes.

**Estimate:** £50-60



**Lot No. 179**

Graham Farish by Bachmann Group of Boxed and Unboxed Wagons. To Include; 2 x 377-227 16T Grey Mineral Weathered, 2 x 377-450 Grey Slope Sided Mineral, 2 x Presflo (Blue Circle and Rugby, 3 x Brake Vans (2 x Toad, 1 x LMS, 373-504 HEA Mainline, 16 x MEA/MFA (Including 3 with Dinosaur Load!) Plus Others. Conditions Are Good to Excellent in Similar Boxes. (38)

**Estimate:** £50-60



**Lot No. 180**

Graham Farish, Lima, Minitrix and Bachmann Group of Unboxed N Gauge Coaches. Including 4 x Matchboarded Pullmans (2 x Brakes), 7 x LMS Non Corridor Coaches (2 x Brakes), 3 x Bachmann Wild West Style (1 x Combine) . Plus Others, See Photo. (29)

**Estimate:** £50-60



**Lot No. 181**

N Gauge Spares/Repairs Parts Plus Static Models; Including Various Mechanisms, Motors and Bodies Plus Other Items. Conditions: Fair to Good.

**Estimate:** £30-40



**Lot No. 182**

N Gauge Peco Quality Line Ready To Run Wagons, Wagon Kits and Wagon Chassis. 12 x Ready To Run Wagons, 38 x Wagon Kits (Appear Unbuilt But Unchecked For Completeness) and 7 x Wagon Chassis. Conditions Are Good Plus to Near Mint in Fair to Good Plus Packaging. (57)

**Estimate:** £70-80



**Lot No. 183**

Peco N Gauge Code 55 Pointwork for Junctions. Comprising; SL-380F Single Slip (Insulfrog), SL-390F Double Slip (Insulfrog) and SL- E383F Scissors Crossover (Electrofrog). Conditions Are Near Mint (As New) In Good to Good Plus Boxes.

**Estimate:** £70-80

## Auction E069 Model Train Auction - Day 1 on 30 July 2025



### Lot No. 184

N Gauge Peco Setrack Points. 6 x ST-5 R/H Turnout and 4 x ST-6 L/H Turnout. Conditions Are Mint in Excellent Packaging.

**Estimate:** £70-80



### Lot No. 185

N Gauge Peco Points & Track Group. Consisting Of: 3 x SL-E395 Medium Radius R/H Electrofrog, 1 x SL-386 Curved R/H Insulfrog, 3 x SL-387 Curved L/H Insulfrog, 1 x SL-392X Medium Radius L/H Insulfrog and 8 x ST-14 Setrack Standard Curve 2nd Radius. Conditions Are Good to Excellent in Similar Boxes.

**Estimate:** £50-60



### Lot No. 186

N Gauge Peco Setrack and Streamline, Bachmann E-Z Track, Lima and Minitrix Track Group. 8 x Peco Streamline and 10 x Setrack Points, 2 x Lima and 2 x Minitrix Points. Plus Approx 88 Pieces of Setrack from Peco/Bachmann /Lima/Minitrix. Conditions Are Fair to Good Plus. See Photo.

**Estimate:** £70-80



### Lot No. 187

Peco, Lone Star and Similar N Gauge group of Sectional Track, Buildings and spares (see photo). Conditions are Poor to Good.

**Estimate:** £20-30



### Lot No. 188

Peco N Gauge Setrack items & Coaches - to include ST-5s & 6s, ST-1s & 11s plus some Bachmann track sections. Along with unboxed InterCity Swallow livery coaches plus BR Chocolate and Cream coaches. Conditions: Good to Good Plus.

**Estimate:** £60-80



### Lot No. 189

Collection of N Gauge EMPTY rolling stock and Locomotive boxes & cases - to include Dapol ND047 Slope Tank GWR 5531, 371-003A Class 08 plus others. Conditions: Good to Good Plus

**Estimate:** £40-50



### Lot No. 190

Arnold N Gauge Group of 15x 4483 2-bay 36' PS-3 peaked end open hopper of the Bessemer & Lake Erie - brown 501. Conditions: Appears Good to Good Plus in Fair to Good cases.

**Estimate:** £40-60



### Lot No. 191

N Gauge Fleischmann Piccolo 3 x 7969 0-4-0 Track Cleaning Locomotive in Edelweiss Local blue and white livery with working pantograph and 2 revolving cleaning pads. Conditions: Appears Good to Good Plus in Fair to Good Perspex cases.

**Estimate:** £60-80

## Auction E069 Model Train Auction - Day 1 on 30 July 2025



### Lot No. 192

Tomytec N Gauge & TWG Locomotive chassis - to include TU-9As, TU-7Ts TM-TR02 & HM-01 mechanisms. Conditions: Excellent Plus to Near Mint in Excellent Plus cases & boxes.

**Estimate:** £50-70



### Lot No. 193

Brawa N Gauge 6002 Trolley Minibus set consisting of a Trolleybus with overhead pantograph in yellow plastic with 10 x catenary supports with wire cable, contained in polystyrene fitted box, generally Excellent box Good.

**Estimate:** £50-70



### Lot No. 194

Kato N Gauge 14-801-6 - Toyama Light Rail Tram PORTRAM TLR0603 (yellow). Conditions: Excellent to Excellent Plus.

**Estimate:** £60-80



### Lot No. 195

Noch N Gauge Preformed Model Railway Base - 135cm by 70cm, previously used but in Good condition. Contact for Delivery or Collection Only.

**Estimate:** £50-70



### Lot No. 196

Noch "Traunstein" Layout Item ref. 84810, 125 x 69 cm, approx. 18 cm high, Has seen some use but is overall very clean. Contact for delivery of Collection Only.

**Estimate:** £60-80



### Lot No. 197

Atlas US Outline N Gauge Utility Fuels Hopper consist - 12 hoppp wagons with various running numbers. Conditions: Generally Excellent Plus to Near Mint in Near Mint to Mint cases.

**Estimate:** £50-70



### Lot No. 198

Bachmann N Scale & Similar Group of wagons - 27 'CSX' hopper wagons with mixed running numbers. Conditions: Generally Excellent to Excellent Plus in Excellent cases.

**Estimate:** £60-80



### Lot No. 199

Oxford Diecast N Gauge & B-T Models Motor vehicles - large assorted group to include Eddie Stobart Scania truck, NCHT001 Churchill Tank Plus many others. Conditions: Appears Near Mint to Mint in Near Mint cases and outer sleeves.

**Estimate:** £80-100



**Auction E069**  
**Model Train Auction - Day 1 on 30 July 2025**



**Lot No. 200**

Langley Models N Gauge Plus others - to include The N Scale Architect 'The hudson' railroad car float, Artitec Ferry Fehmann plus other items. Kits are unchecked for completeness and are assumed to be in Mint condition.

**Estimate:** £70-90



**Lot No. 201**

P.G. Models N Gauge Military Vehicles & Others - to include Hallam Medium Aircraft Tractor, Ferret Mk.2/3 Scout Car, AEC Mammoth Major Aircraft Refueller Plus other items. Conditions: Assumed Excellent to Excellent Plus, kits are unchecked for completeness.

**Estimate:** £40-60



**Lot No. 202**

Walthers N Scale & Similar US Outline model kits - to include Hole in one doughnut shop, Coaling Station, JV Models Boyd Logging Camp, Burnt River Mine plus others. All kits are unchecked for completeness. Assumed Good Plus to Near Mint.

**Estimate:** £80-100



**Lot No. 203**

Walthers N Scale US outline freight wagons Plus others - Assortment of various railroads and company freight cars & a large consist of Southern Hoppers by Deluxe Innovations. Conditions: Good Plus Excellent Plus.

**Estimate:** £60-80



**Lot No. 204**

Walthers N Scale Roundhouse & Similar US Railroad rolling stock - including Passenger coaches plus assorted freight stock. Conditions: Good Plus to Excellent Plus.

**Estimate:** £50-70



**Lot No. 205**

Micro Trains N Scale Walthers & Similar Freight cars - Assorted railroad owners including Conrail, Norfolk & Western, Seaboard System and others. Conditions: Generally Excellent to Excellent Plus.

**Estimate:** £80-100



**Lot No. 206**

Atlas N Scale Con-cor & Similar US Freight Cars - to include Santa Fe, Southern, CSX and other railroad companies. Conditions: Generally Excellent to Excellent Plus.

**Estimate:** £80-100



**Lot No. 207**

Roundhouse N Scale Atlas & Similar US Outline Railroad freight cars - to include Seaboard, CSX Railbox & other railroad owners. Conditions: Generally Excellent to Excellent Plus.

**Estimate:** £80-100



**Lot No. 208**

Wrenn (made by Lima) N Gauge group of 14x BR Blue and Grey Coaches to include 9x Ref. 307 Corridor Composites, 4x Ref. 306 Brake Seconds & 1x Ref. 313 Buffet Car. Conditions are generally Good to Excellent in Good to Good Plus boxes.

**Estimate:** £50-70



**Lot No. 209**

Wrenn (made by Lima) , Atlas and Similar N Gauge group of 13x Us and Canadian Outline Diesel Locomotives, Coaches and Wagons to include Wrenn Ref. 336 Canadian Nation F-Unit Diesel Locomotive. Conditions are generally Good to Excellent in Good boxes.

**Estimate:** £50-70



**Lot No. 210**

Wrenn (made by Lima) N gauge group of 12x BR Blue Class AL6 (Class 86) Electric Locomotives. Conditions are generally Good Plus to Excellent in Good to Good Plus boxes.

**Estimate:** £80-100



**Lot No. 211**

Minitrix N Gauge group of 14x BR Blue and Grey Coaches to include 9x Ref. 13003 Corridor Composites plus others (see photo). Conditions are generally Good to Excellent in Good boxes.

**Estimate:** £60-80



**Lot No. 212**

Wrenn (made by Lima) N gauge group of 27x Container Wagons (3x Containers each) to include 24x Ref. 484 with Freightliner Containers plus others (see photo). Conditions are generally Good to Excellent in Good to Good Plus boxes (some slight damage to boxes).

**Estimate:** £80-100



**Lot No. 213**

Wrenn (made by Lima) N gauge group of 26x Container Wagons (3x Containers each) to include 23x Ref. 484 with Freightliner Containers plus others (see photo). Conditions are generally Good to Excellent in Good to Good Plus boxes (some slight damage to boxes).

**Estimate:** £80-100



**Lot No. 214**

Wrenn (made by Lima) N Gauge group of 6x Ref. 304 Grande European Express Blue and Grey Pullman Car "Wagon Lits" Coaches. Conditions are generally Good to Excellent in Good to Good Plus boxes.

**Estimate:** £40-60



**Lot No. 215**

Viessmann, Langley and Similar N Gauge large group of unbuild Lineside kits and accessories to include Viessmann Ref. 4416 Colour Light Signal plus others (see photo). Conditions are generally Good to Excellent (unchecked for completeness or correctness) in Good boxes.

**Estimate:** £50-70

## Auction E069 Model Train Auction - Day 1 on 30 July 2025



### Lot No. 216

Bachmann, Graham Farish, Roco and Similar N Gauge mixed group of boxed and unboxed Steam & Diesel Locomotives, Coaches and Wagons to include Bachmann Ref. 63553 Burlington and Northern GP40 No. 2009 plus others (see photo). Conditions are generally Good to Good Plus in Fair to Good boxes.

**Estimate:** £50-70



### Lot No. 217

Graham Farish, Lima and Similar group of Motors, Armatures and others items for spares, repairs and restoration to include Graham Farish Ref. 8029 5 Pole Armature with Bearings and Worm Drive plus others (see photo). Conditions are generally Fair to Excellent

**Estimate:** £40-50



### Lot No. 218

Graham Farish N Gauge group of 4x BR (WR) Locomotives to include Ref. 1442 Green Castle Class 4-6-0 No. 5014 "Goodrich Castle" plus others (see photo). Conditions are generally Good Plus to Excellent in Good boxes and outer sleeve.

**Estimate:** £70-90

### Lot No. 219

Dapol N Gauge group of 3x GWR Green Steam Locomotives to include 2x Ref. 2S-010-003 Hall Class 4-6-0 No. 4958 "Priory Hall" and and 1x Ref. ND-014 Class 45xx 2-6-2 Prairie Tank No. 4523. Conditions are generally Good Plus to Excellent in Good boxes.

**Estimate:** £60-80



### Lot No. 220

Graham Farish & Langley N gauge group of 5x items including 3x motorised chassis', 1x Graham Farish Castle Class Locomotive for spares, repairs or restoration and 1x Langley Models Ref. 34 Unbuilt Kit for a GWR Parcels Railcar (see photo). Conditions are generally Fair to Excellent (unchecked for completeness or correctness) in Fair to Good boxes.

**Estimate:** £50-70



### Lot No. 221

Graham Farish N Gauge group of 4x GWR Green Locomotives to include Ref. 372001 49xx Hall Class 4-6-0 No. 4970 "Sketty Hall" plus others (see photo) Conditions are generally Good to Excellent in good boxes and outer sleeves.

**Estimate:** £70-90

### Lot No. 222

Dapol N Gauge group of 3x BR Steam Locomotives to include Ref. ND-O90 BR Green 9F 2-10-0 No. 92220 "Evening Star" plus others (see photo). Conditions are generally Good to Excellent in Good to Good Plus boxes and outer sleeve (cracking to one box).

**Estimate:** £80-100

### Lot No. 223

Graham Farish N Gauge group of 4x BR (WR) Green Steam Locomotives to include Ref. 372551 King Class 4-6-0 No. 6008 "King James II" plus others (see photo). Conditions are generally Good Plus to Excellent in Good boxes and outer sleeves.

**Estimate:** £80-100



## Auction E069 Model Train Auction - Day 1 on 30 July 2025



### Lot No. 224

Graham Farish N Gauge group of 6x GWR Green Tank Engines to include Ref. 371-931A 8750 Class 0-6-0PT No. 4606 plus others (see photo). Conditions are generally Good to Excellent in Good boxes and outer sleeves (please note some outer sleeves are missing).

**Estimate:** £90-110



### Lot No. 225

Graham Farish N Gauge group of 3x Diesel Locomotives to include Ref. 8315 BR Blue Class 33 No. 33012 plus others (see photo). Conditions are Good to Good Plus in Fair to good boxes (one box is missing outer sleeve).

**Estimate:** £50-60



### Lot No. 226

Graham Farish & Dapol N Gauge group of 3x Freightliner Diesel Locomotives to include Graham Farish Ref. 371-651 Class 57/0 No. 57003 "Freightliner Revolution" Plus others (see photo). Conditions are generally Good Plus to Excellent (one locomotive has been weathered) in Good boxes and outer sleeve.

**Estimate:** £90-110



### Lot No. 227

Graham Farish group of 4x BR Steam and Diesel Locomotives to include Ref. 371-175 BR Green Class 40 No. D306 "Atlantic Conveyor" plus others (see photo). Conditions are generally Good Plus to Excellent (Ref. 371-175 has been weathered) in Good to Good Plus boxes and outer sleeves.

**Estimate:** £90-100



### Lot No. 228

Lima, Graham Farish and Similar N Gauge group motor units and chassis parts for spares , repairs and restoration (see photo). Conditions are Poor to Good.

**Estimate:** £40-60



### Lot No. 229

Graham Farish, Fox Transfers and Similar N Gauge mixed group of items for spares, repairs & restoration including Locomotive Bodies, Water Slide Transfers, Accessories and Similar (see photo). Conditions are Poor to Good Poor (some items have evident signs of use) in Good packaging.

**Estimate:** £40-60



### Lot No. 230

Graham Farish and Similar N Gauge mixed group of items for spares, repairs & restoration including Wheels, Chassis Parts and Similar (see photo). Conditions are Poor to Good Poor (some items have evident signs of use) in Good packaging.

**Estimate:** £40-60



### Lot No. 231

Graham Farish, Dapol & Micro-Trains N Gauge mixed group of wheels, couplings and coupling accessories to include Micro-Trains Ref. 1027 Two Pairs of Short Shank Body Mounted Couplings plus others (see photo). Conditions are generally Good to Excellent (unchecked for completeness or correctness) in Good boxes and packing.

**Estimate:** £30-40



**Lot No. 232**

Hornby Lyddle End (China) and Graham Farish N Gauge mixed group of 39x Resin buildings to include Hornby Lyddle End (China) Ref. N8084 Covered Coal Shed plus others (see photo). Conditions are Good Plus to Excellent Plus in Fair to Good boxes.

**Estimate:** £80-100



**Lot No. 233**

Ratio, Slaters, K&S Engineering and Similar mixed group of boxed unbuilt kits, Plastic and Brass Strips, Rods, Tubes and other Accessories to include Slater's Ref. 206 Locomotive Servicing Depot plus others (see photo). Conditions are generally Good (unchecked for completeness or correctness in Good boxes and packaging).

**Estimate:** £50-60



**Lot No. 234**

Peco N Gauge group of boxed and unboxed Section & Streamlined Track to include Ref. SL-E399F Code 55 Three-Way Point plus others (see photo). Conditions are generally Good to Excellent in Fair to Good packaging (some packaging is open).

**Estimate:** £50-60



**Lot No. 235**

Skytrex, Peco, Fox Transfers and Similar large mixed group of unbuilt and partially built kits, Spares, Transfers and Accessories for Wagons and Coaches to include Skytrex Ref. NW23 Ransome and Rapier 45 Ton Mobile Steam Crane unbuilt kit plus others (see photo). Conditions are Good to Excellent (some evident signs of usage on some items and unchecked for completeness or correctness) in Good boxes and packaging.

**Estimate:** £70-90



**Lot No. 236**

Graham Farish, SD Mouldings and Similar mixed group of unboxed kit built and RTR buildings (see photo). Conditions are Fair to Good Plus.

**Estimate:** £40-50



**Lot No. 237**

Hornby Lyddle End (China) N Gauge group of 10x packs of Resin Retaining Wall Sections to include 3x Ref. N 8706 Retain Wall 2 plus others (see photo). Conditions were generally Excellent to Excellent Plus (some discolouration of some of the plastic protective packaging).

**Estimate:** £50-60



**Lot No. 238**

Hornby Lyddle End (China) N Gauge group of 9x Ref. N8770 Modern Industrial Units. Conditions were generally Excellent to Excellent Plus in Good to Good Plus boxes..

**Estimate:** £80-100



**Lot No. 239**

Knightwing, Mill Lane Sidings and Similar mixed group of N Gauge unboxed and unboxed Kitbuilt and Unbuild Buildings, Lineside Items and Scenic Items to include Mill Lane Sidings Ref. MLS037 Gantry Crane plus others (see photo). Conditions are generally Fair to Good Plus in Fair to Good boxes and packaging.

**Estimate:** £60-80

**Auction E069**  
**Model Train Auction - Day 1 on 30 July 2025**



**Lot No. 240**

Atlas, Brawa and Similar N Gauge group of items including Track, Buildings Kits, Accessories and Similar to include Atlas Ref. #2790 Manually Operated Turntable plus others (see photo). Conditions are Poor to Good in Fair to Good boxes.

**Estimate:** £40-60



**Lot No. 241**

N Gauge or Similar Continental scenery items - to included some premade scatter terrain sheets, assorted buildings and vehicles. Conditions: Fair to Good

**Estimate:** £50-70



**Lot No. 242**

Graham Farish (Poole) N Gauge Lima & Others Locomotives - Assortment to include Lima Railcar, Bachmann US Outline items plus others. Conditions: Generally Fair to Good.

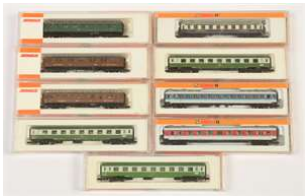
**Estimate:** £60-80



**Lot No. 243**

Life-Like N Gauge Spares Repairs items - to include some chassis fitted with Lonestar bodies, plus locomotives missing some parts. Conditions: Fair.

**Estimate:** £60-80



**Lot No. 244**

Arnold N Gauge Continental Coach selection - to include 3312Arn type SA4k28 1st class passenger car Rheingold of the DRG, 3956ARN Avmz-111 type 1st Class compartment car 61 80 19-90 157-7 of the DB plus others. Conditions: Generally Good Plus to Excellent.

**Estimate:** £50-70



**Lot No. 245**

Arnold N Gauge Minitrix & Fleischmann Wagons & Short coaches - Large assortment of US and German outline wagons. Conditions: Excellent to Excellent Plus.

**Estimate:** £70-90



**Lot No. 246**

Graham Farish (Poole) N Gauge Roco & Similar Wagons & Coaches, some are missing axles. Conditions: Poor to Good

**Estimate:** £60-80



**Lot No. 247**

VH Scale Models HO Gauge (Samhongsu, Korea) Brass CPR 2-8-0 Canadian Pacific Railway Locomotive. Conditions: Excellent to Excellent Plus Smokebox door is slightly detached.

**Estimate:** £100-120





**Lot No. 248**

Akane HO Gauge Brass 'American' 4-4-0 Locomotive - painted in P.R.R. maroon and green livery, in original box, missing inside foam. Conditions: Excellent to Excellent Plus

**Estimate:** £60-80



**Lot No. 249**

NPP Nickel Plate Mack HO Brass Model - Brill Rail Bus Railbus, Unpainted produced in 1972 by Kumata. Conditions: Excellent to Excellent Plus.

**Estimate:** £60-80



**Lot No. 250**

Liliput HO Gauge German Coach sets - containing L350001 & L350002. Conditions: Conditions: Good Plus to Excellent in Fair outer boxes.

**Estimate:** £80-100



**Lot No. 251**

H0 American Trio of Small Diesel/Man Powered Locomotives! Bachmann Spectrum 81224 Fairbanks Morse H16-44 Baby Trainmaster Baltimore & Ohio #9744 Boxed, Bachmann Spectrum 80033 GE 44 Ton Switcher New Haven #0815 Boxed, and Gandy Dancer Unboxed. Conditions Are Good to Good Plus.

**Estimate:** £50-60



**Lot No. 252**

Marklin HO Scale 3-rail pair of SBB/CFF Electric Locomotives comprising of Ref. 3050 Ae6/6 No. 11419 "Bern" and RET800 No.427. Conditions are Excellent Plus in Good Plus boxes (some writing on boxes).

**Estimate:** £80-100



**Lot No. 253**

Marklin HO Scale 3-rail pair of DB Electric Locomotives comprising of Ref. 3053 Class E03 and Ref. 3022 Class E94. Conditions are Excellent Plus in Good Plus boxes (some writing on boxes).

**Estimate:** £80-100



**Lot No. 254**

Marklin HO Scale 3-rail Ref. 3015 Oliver Green CE6/6 Olive green Electric Loco "Krokodile" No.800. Condition is Excellent Plus in Good Plus box.

**Estimate:** £120-140



**Lot No. 255**

Marklin HO Scale 3-Rail group of 3x items to include Ref. 3065 Class V60 No. V60 1009, Ref. 3016 VT795 Railbus and Ref. 4018 Railbus Trailer. Conditions are Excellent to Excellent Plus in Good boxes (some writing on the boxes and some were noted.)

**Estimate:** £80-100



**Lot No. 256**

Marklin HO Scale group of 3x Deutsche Bundesbahn Steam Locomotive to include Ref. 3027 BR44 Class 2-10-0 Locomotive No. 44 690, Ref. 3048 BR01 Class 4-6-2 Locomotive and BR Ref. 3003 BR24 Class 2-6-0 Locomotive. Conditions are Excellent to Excellent Plus in Good boxes (some ware and writing on the boxes).

**Estimate:** £80-100



**Lot No. 257**

Liliput HO Scale group of 5x Rheingold Coaches to include Ref. 82100 Purple Gepäckwagen plus others (see photo). Conditions are generally Good Plus to Excellent in Good boxes

**Estimate:** £40-50



**Lot No. 258**

Athearn HO Gauge group of 4x Diesel Locomotives to include Ref. 4612 Undecorated GP38-2, Ref. 95416 Norfolk and Western Bicentennial Livery SD45 No.1776 plus others (see photo). Conditions are generally Good to Excellent (some parts are loose in the boxes) in Good Boxes.

**Estimate:** £70-90



**Lot No. 259**

Athearn HO Gauge group of 4x Diesel Locomotives to include Ref. 3162 Southern Pacific Black Widow Livery GP9 No. 5641, Ref. 95416 Norfolk and Western Bicentennial Livery SD45 No.1776 plus others (see photo). Conditions are generally Good to Excellent (some locomotives have had embellishments added to them) in Good Boxes (please note some Locomotives are in incorrect boxes).

**Estimate:** £60-80



**Lot No. 260**

Athearn HO Gauge group of 4x Union Pacific Diesel Locomotives and Dummy Power Unit to include Ref. 4290 DD40 with 2x Motors No.78 plus others (see photo). Conditions are generally Good to Excellent (unchecked for completeness) in Good Boxes.

**Estimate:** £70-90



**Lot No. 261**

Accurail, Bowers and Athearn HO Scale group of 10x Items of Virginian Rolling stock to include Athearn 34' 2 Bay Hopper 6x Pack plus others (see photo). Conditions are Excellent to Excellent Plus in Good to Good Plus boxes.

**Estimate:** £80-100



**Lot No. 262**

Athearn, Roundhouse and Similar HO Scale group of 14x US Outline Freight Car items to include Roundhouse Ref. RND84619 40' Box Car No. #CPDX-101 "Cloverland Dairy" plus others (see photo). Conditions are Excellent to Excellent Plus in Good boxes.

**Estimate:** £60-80



**Lot No. 263**

Athearn, Mantua and Similar HO Scale group of 23x Freight Cars to include Athearn Ref. 1308 Norfolk Southern 50' DD Box Car No. #1314 plus others (see photo). Conditions are generally Good to Good plus in Good boxes.

**Estimate:** £70-90

**Auction E069**  
**Model Train Auction - Day 1 on 30 July 2025**



**Lot No. 264**

Con-Cor HO Scale group of 9x Amtrak Coach Cars to include 2x Ref. #0001-000801 Superliner Amtrack Phase II Double Decker Coach Cars plus others (see photo). Conditions are generally Good to Good plus in Fair to Good boxes (some boxes are missing inner packaging).

**Estimate:** £40-60



**Lot No. 265**

Atlas, Red Caboose and Similar HO Scale group of 10x Freight Car to include Atlas Ref. 20 001 972 Atlantic Coast Line ACF REA Express Reefer No. #3001 plus others (see photo). Conditions are excellent to Excellent Plus in Good to Good Plus boxes.

**Estimate:** £50-60



**Lot No. 266**

Broadway Limited group of 12x Norfolk & Western H2A 7-0 Ton 3 Bay Hopper Cars. Conditions are Excellent Plus in Good Plus boxes.

**Estimate:** £60-80



**Lot No. 267**

Athearn, & E-R Models HO Scale group of 11x Baltimore and Ohio Coaches and Locomotives to include E-R Models Ref. 040-4104 RF-16 Sharknose plus others (see photo). Conditions are Good to Excellent in Good to Good Plus boxes.

**Estimate:** £50-70



**Lot No. 268**

Athearn Con-Cor and Similar group of 17x Coaches Cars and unbuilt or part built Coach Car Kits to include Ref. 2072 New Haven RDC-1 Dummy Coach plus others (see photo). Conditions are generally Good to Excellent (unchecked for completeness or correctness) in Good boxes.

**Estimate:** £70-90



**Lot No. 269**

Athearn, Con-Cor, Atlas and Similar HO Scale mixed group of 20x Norfolk and Western Freight Cars to include Atlas Ref. 1304-1 Standard Cupola Caboose No. #518547, Athearn Ref. Ref. 7536 200-Ton Crane and Tender plus others (see photo) Conditions are generally Good Plus in Good to Good Plus boxes.

**Estimate:** £90-110



**Lot No. 270**

Walther's HO Scale group of 6x Southern and Norfolk & Western Silver Coaches to include 2x Ref. 932-6311 Southern 85' Budd 46 Seat Coach plus others (see photo). Conditions are Excellent to Excellent Plus in Fair to Good boxes (some damage to some boxes).

**Estimate:** £60-80



**Lot No. 271**

Walther's and MTH HO Scale group of Pennsylvania and Norfolk and Western coaches to include MTH Ref. 80-6--14 Norfolk and Western Passenger Car No. 540 "The Powhatan Arrow" plus others (see photo). Conditions are generally Good Plus to Excellent in Good boxes.

**Estimate:** £70-90





**Lot No. 272**

Branchline Blueprint Series HO Scale group of 11x built unbuilt Freight and Coach Car Kits to include 2x Ref. 5199 80' Single Window Coach unlettered but painted Green plus others (see photo). Conditions are Good to Excellent with Freight Cars built to a Good standard but items are not checked for completeness or correctness in Good boxes.

**Estimate:** £60-80



**Lot No. 273**

Branchline Trains, Proto2000, Walther's and Similar group of 18x Freight Car Items to include Walther's Ref. 932-366 Cushion Coil Car Twin Pack plus others (see photo). Conditions are generally fair to Excellent - please note some items are in incorrect box and are unchecked for completeness and one twin pack is missing a wagon in Good to Good Plus boxes.

**Estimate:** £60-80



**Lot No. 274**

Penn-Line & Athearn group of 7x EMD F-7A & B Units to include Athearn Ref. 3225 Canadian Nation F7A Super Geared Locomotives plus others (see photo). Conditions are generally Good to Good Plus in Fair to Good Boxes (some damage to boxes and some items are in incorrect boxes)

**Estimate:** £60-80



**Lot No. 275**

AHM (Rivarossi) and Rivarossi HO Scale group of 4x Large US Outline Steam Locomotives (3x Articulated) to include AHM Ref. 5111 Southern Pacific Cab Forward 2-8-8-4 Locomotives plus others (see photo) Conditions are generally Good to Good Plus (please note the Ref. 5111'S body is loose from it's chassis) in Fair boxes (some damage to box windows).

**Estimate:** £70-90



**Lot No. 276**

Rapido Goldleaf HO Scale pair of Rocky Mountaineer Dome Cars comprising of Ref. 126001 & 126004. Conditions are Good Plus to Excellent in Fair to Good boxes (some tearing to one box)

**Estimate:** £50-70



**Lot No. 277**

Genesis from Athearn HO Scale Ref. ATHG65250 Norfolk Southern First Responder Livery SD60E No. 911. Condition is Excellent Plus in Excellent Box.

**Estimate:** £70-90



**Lot No. 278**

Proto 2000 group of 3x Diesel Locomotives and 1x Unpowered B Unit to include Ref. Ref. 23050 Baltimore & Ohio GP7 Phase II Second Release No. #722 plus others (see photo). Conditions are generally Good to Excellent please note these items were originally sold with their Bodies and Chassis separate however to have been added together in Good boxes.

**Estimate:** £70-90



**Lot No. 279**

Proto 2000 and Stewart Hobbies (Kato) HO Scale group of 4x Diesel Locomotives and 1x Unpowered B Unit to include Ref. 23615 Norfolk & Western GP7 II No. #710 plus others (see photo). Conditions are generally Good to Excellent please note these items were originally sold with their Bodies and Chassis separate however to have been added together in Good boxes.

**Estimate:** £90-110

**Auction E069**  
**Model Train Auction - Day 1 on 30 July 2025**



**Lot No. 280**

Proto 2000 group of 3x Diesel Locomotives to include Ref. 23086 Nickel Plate Road GP30 No. #909 plus others (see photo). Conditions are generally Good to Excellent please note these items were originally sold with their Bodies and Chassis separate however to have been added together in Good boxes.

**Estimate:** £60-70



**Lot No. 281**

Broadway Limited Paragon Series HO Scale Ref. 623 Pennsylvania Railroad GG1 No. 4905 QSI Sound Equipped. Condition is Neat Mint in Excellent Box.

**Estimate:** £120-140



**Lot No. 282**

Broadway Limited Hybrid Paragon Series HO Scale Ref. 2066 Brass Built Pennsylvania Railroad Q2 4-4-6-4 No. #6187 with 18000 Gallon Tender with Paragon2 Sound. Condition is Excellent in Good box (some ware to side of lid).

**Estimate:** £110-130



**Lot No. 283**

Broadway Limited Paragon Series HO Scale Ref. 078 Norfolk & Western Black and Maroon J Class 4-8-4 No. #613 with QSI Quantum Sound. Condition is Near Mint in Good box (slight tare on and box lid).

**Estimate:** £120-140



**Lot No. 284**

Broadway Limited Paragon Series HO Scale Ref. 016 Pennsylvania Railroad T1 4-4-4-4 Duplex Steam Locomotive No.5517 with 16-wheel Bogie Tender, QSI Sound and complete with pair of flanged driving wheels for alternative fitment.. Condition Excellent Plus in Good Plus to Excellent box

**Estimate:** £140-160



**Lot No. 285**

Broadway Limited Paragon Series HO Scale Ref. 788 Pennsylvanian Railroad K4 Steam Locomotive unnumbered and unliveried with QSI Quantum Sound. Condition is Excellent in Good box (some slight ware on box sides).

**Estimate:** £100-120



**Lot No. 286**

Broadway Limited Paragon Series HO Scale Ref. 013 Norfolk & Western Class A 2-6-6-4 No. #1217 with Quantum QSI Sound. Condition is Near Mint in Good box (some slight ware on box lid).

**Estimate:** £120-140



**Lot No. 287**

Broadway Limited Paragon Series HO Scale Ref. 014 Norfolk & Western Class A 2-6-6-4 No. #1224 with Quantum QSI Sound. Condition is Near Mint in Good box (some slight ware on box lid).

**Estimate:** £110-130

**Auction E069**  
**Model Train Auction - Day 1 on 30 July 2025**



**Lot No. 288**

Proto 2000 Heritage Steam Collection HO Scale Ref. 30028 Virginian USRA 2-8-4 No. #505. Condition is Good to Excellent (smoke box front of loose and some distortion to regulator rod on right hand side but otherwise Excellent) in Good Plus box.

**Estimate:** £70-90



**Lot No. 289**

Precision Craft Models HO Scale Ref. 015 Norfolk and Western Y6b Class 2-8-8-2 No. #2195 with 221 Tender, Modern Bell and Loksound. Condition is Excellent in Good Plus box.

**Estimate:** £140-160



**Lot No. 290**

Genesis from Athearn HO Scale Ref. ATHG68823 EMS Lease SD70ACe No. #1201. Condition is Near Mint in Excellent box.

**Estimate:** £70-90



**Lot No. 291**

Atlas HO Scale Ref. 7736 Norfolk & Western Fairbanks-Morse H24-66 Train Master No. #158 QSI Equipped for DC and DCC Sound. Condition is Excellent in Good Plus box.

**Estimate:** £70-90



**Lot No. 292**

Atlas HO Scale Ref. 7723 Wabash Fairbanks-Morse H24-66 Train Master No. #551 QSI Equipped for DC and DCC Sound. Condition is Excellent in Good Plus box.

**Estimate:** £70-90



**Lot No. 293**

Broadway Limited Paragon Series HO Scale Ref. 625 Pennsylvania Railroad GG1 No. 4913 QSI Sound Equipped. Condition is Excellent Plus in Good Plus Box.

**Estimate:** £100-120



**Lot No. 294**

Broadway Limited Paragon Series HO Scale Ref. 493 Norfolk & Western GE C30-7 2 Window No. #8027 QSI Sound Equipped. Condition is Near Mint in Good Plus Box.

**Estimate:** £80-90



**Lot No. 295**

Overland Models (Ajin-Precision Mfg Korea) HO Scale Ref. OMI1912.1 Cleveland Union Terminal (New York Central) P-1 2-C+C-2 Electric Locomotive. Condition is Good to Excellent (one end chain has come loose from holding but his still attached for Locomotive) in Good Box.

**Estimate:** £100-120





**Lot No. 296**

Tenshodo (Japan) group of 1x Locomotive and 2x Coaches to include JNR Brown ED17 Bo-Bo Electric Locomotive plus others (see photo). Conditions are Excellent plus in Good boxes.

**Estimate:** £80-100



**Lot No. 297**

TER (Japan) HO Scale TER Ki-100 Russell Snowplough, this model is a rare Brass Model. Conditions are Good Plus to Excellent (some slight tarnishing on wings) in Good to Good Plus boxes.

**Estimate:** £30-40



**Lot No. 298**

TER & KTM (Japan) HO Scale group of 6x JNR Wagons to include TER Ref.3000 "Wafu" Brake Van/Caboose No. 35616 plus others (see photo). Conditions are Excellent in Good to Good Plus boxes.

**Estimate:** £50-60



**Lot No. 299**

Lima, Rivarossi and Similar HO Scale group of 18x US and European Outline Locomotives, Coaches and Wagons to include Lima Ref. 208128L NSB E114 Electric Locomotive Plus others (see photo). Conditions are generally Poor to Excellent (some Locomotives have been damage resulting in loose pony trucks and evidence of perished foam) in Poor to Good boxes.

**Estimate:** £70-90



**Lot No. 300**

Marklin HO Scale group of 10x Boxed coaches and wagons to include Ref. 346/6 DSG Ref. Speisewagen plus others (see photo). Conditions are Good to Excellent (unchecked for completeness or correctness) in Good boxes (boxes have writing over them).

**Estimate:** £70-90



**Lot No. 301**

Marklin HO Scale group of 12x Boxes of 3-Rail Track and Electrical Accessories to include 2x 220 V (AC) Controllers plus others (see photo). Conditions are Good to Excellent (unchecked for completeness or correctness) in Good boxes.

**Estimate:** £50-70



**Lot No. 302**

Marklin HO Scale group of 14x Boxed Wagons to include Ref. 4617 Tiefladwagen with Transformator Load plus others (see photo). Conditions are generally Good to Excellent (unchecked for completeness or correctness) in Good boxes.

**Estimate:** £60-80



**Lot No. 303**

Marklin HO 3-Rail pair of German Electric Locomotives comprising of Ref. CE800 E63 Class Shunter No. E6302 and Ref. SET800 E.44 Class Locomotive No. E44039. Conditions are generally Good Plus to Excellent Plus (Locomotives are wrapped and have instructions included) in Good boxes (some writing on boxes).

**Estimate:** £90-110



**Lot No. 304**

Marklin HO Scale 3-Rail pair of German Steam Locomotives comprising of Ref. DA800 BR23 Class 2-6-2 No 23014 & Ref. 8000 BR89 Class 0-6-0T Shunting Locomotive No. 89028. Conditions are Good Plus to Excellent Plus in Good boxes (boxes have writing on them).

**Estimate:** £80-100



**Lot No. 305**

Pocher HO Scale group of 8x Diecast Coaches to include SNCF Mixte No. 470 plus others (see photo) Conditions are generally Good to Excellent in Good boxes.

**Estimate:** £60-80



**Lot No. 306**

Jouef, Roco and Similar HO Scale mixed group of Steam, Electric Locomotives, Coaches and Wagons to include Jouef Ref. 8260 SNCF Class 241 7P 4-8-2 Steam Locomotive plus others (see photo). Conditions are Generally Good Plus to Excellent in Fair to Good boxes.

**Estimate:** £70-90



**Lot No. 307**

Fleischmann, Schicht and Similar HO Scale mixed group of 22x items to include Fleischmann Ref. 1351F DB BR55 0-8-0 plus others (see photo). Conditions are generally Good to Excellent in air to Good boxes.

**Estimate:** £80-100



**Lot No. 308**

Kleinbahn HO Scale group of 13x Boxed Items to include Ref. 5045 High Speed Rail Motor Car (Blue Flash) Austrian Federal Railways & Trailer plus others (see photo). Conditions are Good Plus to Excellent in Good boxes.

**Estimate:** £70-90



**Lot No. 309**

Fleischmann HO Gauge Piko & Similar coaches - Assortment of coaches from SNCF and of the DB including Fleischmann railcar 'Munchen'. Conditions: Fair to Good.

**Estimate:** £70-90



**Lot No. 310**

Liliput HO Gauge Marklin & Fleischmann coaches - to include 818 03s, 43050, 43070, 5766K, 5757k Plus others. Conditions: Good Plus to Excellent Plus in Excellent Plus cases/Boxes

**Estimate:** £70-90



**Lot No. 311**

Roco HO Gauge group of DB coaches - to include 44014 Set of Four 4-Wheel Passenger/Parcel Coaches of the Royal Bavarian State Railway, plus Trix 23766 plus others. Conditions: Appears Good Plus to Excellent Plus in Good Plus window boxes.

**Estimate:** £70-90

**Auction E069**  
**Model Train Auction - Day 1 on 30 July 2025**



**Lot No. 312**

Roco HO Gauge & Similar Coaches - Assortment of coaches to include 44821 3rd Class Passenger Coach of the DRG, 44862 Roco 3-Axle 2nd/3rd Class Coach of the DRG plus others. Conditions: Fair to Excellent in Fair to Excellent boxes.

**Estimate:** £60-80



**Lot No. 313**

Piko Triebwagenzug BR185+BR195 - One set in DB Maroon livery, plus One BR 195 in DR and two BR 185s, also in DR. Conditions: Generally Good to Good Plus in Poor to Good Plus boxes, one box has been damaged (see photo).

**Estimate:** £60-80



**Lot No. 314**

Preiser HO Scale & Wiking vehicles - A Large assortment of motor vehicles for HO scale. Conditions: Good to Good Plus in Good boxes/cases.

**Estimate:** £50-70



**Lot No. 315**

Lima HO Liliput & Fleischmann Coach stock - L382901 Class WG4++ke-28/50 company coach of the DB, L334010 Passenger Coach 1st Class, 4 wheel DB Plus others. Conditions: Generally Excellent to Excellent Plus in Fair to Good Plus boxes.

**Estimate:** £60-80



**Lot No. 316**

Liliput HO Herkat & Brawa Wagons - to include Brawa 2173BRA Gep 41 Type Baggage car of the DRG, Liliput L230991 Auxiliary tank wagon of the German DB in camouflage livery plus other items. Conditions: Good Plus to Excellent Plus in Good Plus to Excellent boxes/cases.

**Estimate:** £70-90



**Lot No. 317**

Roco HO Jouef and Similar - to include unboxed Jouef 664 Kangourou road rail items, plus hoppers, vans and other items. Some items are missing bogies or other parts. Conditions: Fair to Excellent.

**Estimate:** £60-80



**Lot No. 318**

Wiking HO Gauge Vehicles & Similar - Large assortment of boxed and unboxed model vehicles in HO or similar scale. Conditions: Fair to Excellent

**Estimate:** £60-80



**Lot No. 319**

Liliput HO Gauge - L112601 Class VT06 3 unit diesel train pack of the German DB. Conditions: Generally Excellent to Excellent Plus in Fair box.

**Estimate:** £60-80



## Auction E069

### Model Train Auction - Day 1 on 30 July 2025



#### Lot No. 320

Brawa HO Gauge locomotives - 6903Bra Elektrolok E69 EB6903 E in maroon & Brawa 0474 H0 AC shunting locomotive Köf II of the DB AG, digital in original packaging. Conditions: Excellent to Excellent Plus in Excellent Plus cases and boxes.

**Estimate:** £80-100



#### Lot No. 321

Trix HO Gauge 52243100 electric locomotive 175 052-0 of the DB. Conditions: Mostly Good Plus to Excellent, one bugger is detached but present in box, buffer socket is slightly damaged.

**Estimate:** £60-80



#### Lot No. 322

Noch HO Scale figures Animals and other accessories - to include 16751, 16701 plus others. Conditions: Generally Excellent Plus to Near Mint.

**Estimate:** £80-100



#### Lot No. 323

Noch HO Gauge Merton & Similar Figures - including animals and scenic detailing items. Conditions: Good Plus to Excellent.

**Estimate:** £60-80



#### Lot No. 324

Marklin HO Gauge 3-rail 3102 2-6-8-0 DR Class 53 "Borsig" Experimental Locomotive No.53 0001 with 10-wheel Bogie Tender. Condition is Excellent Plus in Fair box.

**Estimate:** £60-80



#### Lot No. 325

Brawa HO Gauge Locomotives - to include Nr.456, 0470, 0472 & 0483. Conditions: Excellent to Excellent Plus in Excellent boxes.

**Estimate:** £80-100



#### Lot No. 326

Viessmann & Sommerfeldt HO Gauge Catenary masts and equipment - including masts, OHW plus other accessories and detailing parts. Conditions: Excellent Plus to Mint in Excellent packets.

**Estimate:** £50-70



#### Lot No. 327

Roco HO Gauge Locomotives - with 43483 DB green Class No.194 194-7 & 70980 HO Scale Diesel Locomotive Class V100 1224, this has a DCC decoder, untested and Unboxed. Conditions: Good Plus to Excellent Plus.

**Estimate:** £60-80

## Auction E069 Model Train Auction - Day 1 on 30 July 2025



### Lot No. 328

Roco HO & Preiser 'Minitanks' Group of German Military kits - to include 18354 Reach truck kits, Roco Z-310S Soldiers plus other items. Conditions: Fair to Excellent Plus.

**Estimate:** £30-50



### Lot No. 329

Marklin 3-rail HO Gauge 49960 Operating Speed Measurement Car of the DB, Box states DCC fitted. Conditions: Excellent to Excellent Plus.

**Estimate:** £60-80



### Lot No. 330

Marklin HO Gauge & Trix freight packs - with 47893 Track-laying 4-wagon pack of the DRG & Trix HO Gauge No.23990 Flat Car Set. Contains 3 x Flat Wagons with Loads. Conditions: Excellent to Excellent Plus in Good Plus to Excellent boxes.

**Estimate:** £60-80



### Lot No. 331

Eheim HO Trolley Busses and OHE - to include three busses (two are double busses with coupling) with some catenary and masts. Conditions: Generally Fair to Good in Fair box.

**Estimate:** £40-50



### Lot No. 332

Faller HO Scale Road system track sections - to include switching road routes, crossing and passing sections. Conditions: Fair to Good.

**Estimate:** £60-80



### Lot No. 333

Jouef HO Gauge Lima & Similar wagons - a general assortment of vans, hoppers, tankers plus others. Conditions: Fair to Good.

**Estimate:** £50-70



### Lot No. 334

HO Scale Assortment of Continental vehicles - to include Wiking, Preiser and others. Conditions: Good to Good Plus.

**Estimate:** £40-60



### Lot No. 335

Liliput HO Gauge Roco & Others - to include L2400001 Wagon set, Fleischmann 5307FL Covered Goods Wagon with Brake Platform 'Fischtransport' of the DRG, plus others. Conditions: Good Plus to Excellent Plus.

**Estimate:** £50-70

**Auction E069**  
**Model Train Auction - Day 1 on 30 July 2025**



**Lot No. 336**

Roco HO Gauge Trix & Similar coaches - to include Roco 45482 2nd class "Silberling" with a luggage compartment of the DB, plus others and unboxed coaches. Conditions: Excellent to Excellent Plus.  
**Estimate:** £60-80



**Lot No. 337**

Roco HO Gauge Marklin & Similar wagons - to include Marklin 4479MAR 4-axle slag car 'Mannesmann AG Huttenwerke', Liliput L235750 Flat Wagon with Brakeman's Cab "Rumpler" DR Plus others. Conditions: Generally Good Plus to Excellent Plus.  
**Estimate:** £80-100



**Lot No. 338**

Kibri HO Gauge A.H.M. & Similar Scenic kits - to include Herkat rolling stock washer machine, 9822 Park fencing Plus other items. Kits unchecked for completeness. Conditions: Good to Good Plus.  
**Estimate:** £60-80



**Lot No. 339**

Marklin HO Scale Woodland Scenics & Other Commercial vehicles plus others items. Conditions: Good to Good Plus.  
**Estimate:** £70-90



**Lot No. 340**

Rivarossi HO Scale Ref. HR2408 Virginian Class AG 'Blue Ridge' 2-6-6-6 No. #900 with DCC Sound. Condition is Excellent Plus in Good Plus box.  
**Estimate:** £120-140



**Lot No. 341**

Rivarossi HO Scale Steam Locomotives and Diesel Twin Pack comprising of Ref. 1254 Union Pacific Big Boy 4-8-8-4 No. #4005 and Ref. 1835 Southern Pacific ML4000 Diesel-Hydraulic Twin Pack (one Powered and one Dummy Locomotive) Condition is Good to Good Plus (evidence of foam deterioration on Locomotive and tender on Ref. 1254) in a Good boxes and outer sleeve.  
**Estimate:** £70-90



**Lot No. 342**

Liliput L133000 Track inspection car #625033 in green & cream of the +ûBB, 4405 maroon 4-wheel single Railbus, & two Roco 63074 Class BR998 199-7 Diesel Railbus Trailer of the German DB.  
**Estimate:** £80-100



**Lot No. 343**

Trix HO Gauge 22566 0-8-0 Fireless Steam Locomotive "Werk 1" in black & 4081 0-8-0 DB 81006 Tank Locomotive. Conditions: Excellent to Excellent Plus in Excellent Plus boxes.  
**Estimate:** £80-100



## Auction E069 Model Train Auction - Day 1 on 30 July 2025



### Lot No. 344

Marklin HO Gauge & Fleischmann Locomotives - 8393 4-6-2 DB Class 18 No.18 478 & 4016 2-4-0T Black / Red Deutsche Bundesbahn 70091. Conditions: Fair to Good Plus in Fair to Good boxes.

**Estimate:** £60-70



### Lot No. 345

Marklin HO 2/3-rail Locomotive assortment - to include three 3078 locomotives, with modified liveries, along with Fleischmann Class E19 11 plus others. Conditions: Fair to Good.

**Estimate:** £80-100



### Lot No. 346

Kleinbahn HO Gauge Fleischmann Lima Coaching stock - various coaches of the DB. Conditions: Fair to Excellent.

**Estimate:** £60-80



### Lot No. 347

Liliput HO and OO Gauge mixed group of 12x Wagons and Coaches Plus 1x Electronic Locomotives to include Liliput 88050 SBB/CFF Restaurant Car plus others (see photo). Conditions are Poor to Excellent (the Electric Locomotive has been disassembled and is in Poor condition for possible spares, repairs or restoration) in Good boxes (please note some boxes may be incorrect).

**Estimate:** £60-80



### Lot No. 348

Liliput HO Scale 2-rail L112501 2-car Railcar Set VT25 DB red, consisting of 2 x 1st/2nd power and non-power Cars. Conditions: Excellent Plus in Excellent box.

**Estimate:** £60-80



### Lot No. 349

Liliput HOe Narrow Gauge L141491 - ZB No.5 "Gerlos". Conditions: Excellent to Excellent Plus in Excellent box.

**Estimate:** £80-100



### Lot No. 350

Hornby Dublo 2-rail OO Gauge group - to include 2-Rail 2217 0-6-2 BR 69550 Tank Locomotive, matt black with coal in bunker, 2230 Bo-Bo Diesel Class 20 Locomotive D8017 in green & 2211 BR 60030 Golden Fleece Locomotive and Tender plus metal sided with clear window carriages. Conditions: Fair to Good

**Estimate:** £50-70



### Lot No. 351

Hornby-Dublo OO Gauge Ref. 2235 BR Green Re-built Bulleid Pacific No. 34005 "Barnstaple". Condition is Good Plus to Excellent (some cleaning is required) complete with originally warranty leaflet, Instruction Booklet and Oil in Good Box (some writing on the box).

**Estimate:** £70-90

## Auction E069 Model Train Auction - Day 1 on 30 July 2025



### Lot No. 352

Hornby-Dublo pair of BR Green Diesel to include Ref. 2233 Metropolitan Vickers's Co-Bo No. D5702 and Ref. 2231 350HP 0-6-0 Diesel Electric Shunter No. D3302. Conditions are Good Plus to Excellent (some cleaning required) both items have original warranty certificates and Instructions, in Good boxes (some ware and writing on the boxes).

**Estimate:** £80-100



### Lot No. 353

Hornby-Dublo group of 9x Coaches to include 2x Ref. 4038 Brake 2nd Pullman Car No. 79 plus others (see photo). Conditions are generally Good to Good Plus in Good to Good Plus boxes (some marks and writing on some boxes).

**Estimate:** £70-90



### Lot No. 354

Hornby-Dublo group of 6x Coaches to include 3x Ref. 4084 BR Maroon Brake 2nd Suburban's plus others (see photo). Conditions are generally Good to Good Plus (some tare and damage to the paint on some coaches) in Good to Good Plus boxes (some marks and writing on some boxes).

**Estimate:** £60-80



### Lot No. 355

Hornby-Dublo group of 5x Coaches to include 3x Ref. 4083 BR Maroon 1st/2nd Suburban's plus others (see photo). Conditions are generally Good to Good Plus (some tare and damage to the paint on some coaches) in Good to Good Plus boxes (some marks and writing on some boxes). Please note one item Ref. 4084 is in incorrect box.

**Estimate:** £60-80



### Lot No. 356

Hornby-Dublo group of 14x Wagons to include 9x Ref. 4626 Presflo Bulk Cement Wagons, 4x Ref. 4627 I.C.I 20 Ton Bulk Salt Wagon & 1x Ref. 4658 Prestwin Silo Wagon. Conditions are Good to Excellent in Good boxes.

**Estimate:** £60-80



### Lot No. 357

Hornby Dublo (Export) group of 6x Wagons to include 2x Ref. 4451 Banana Vans, 2x ef. 4825 20-Ton Bulk Grain Wagons and 2x Ref. 4875 Tank Wagons "Chlorine" Conditions are Good to Excellent in Fair to Good boxes (one box is slightly damaged)

**Estimate:** £60-80



### Lot No. 358

Hornby-Dublo group of 3x Rare Wagons to include 2x Ref. 4685 Caustic Liquor Wagons and 1x Ref. 4655 16-Ton Mineral Wagon (SD6) - please note Ref. 4655 is the type with the cut out brake gear. Conditions are Good to Excellent in Good boxes.

**Estimate:** £80-100



### Lot No. 359

Hornby-Dublo group of 13x Wagons to include 6x Ref. 4313 Gunpowder Van, 3x Ref. 4657 Tank Wagons "United Dairies", 2x Ref. 4301 Banana Van plus others (see photo). Condition are Good to Excellent in Good boxes.

**Estimate:** £80-100



**Lot No. 360**

Hornby Dublo group of 35x wagons and accessories to include 5x Ref. Machine Low Mac WagonOs to plus others (see photo). Conditions are generally Good to Excellent in Good boxes.

**Estimate:** £90-110



**Lot No. 361**

Hornby-Dublo mixed group of Locomotives, Wagons, Track and Accessories plus empty Train Set Box to include Ref. D1 Level Crossing. Conditions are Fair to Good Plus in Fair boxes.

**Estimate:** £60-80



**Lot No. 362**

Hornby Dublo Unboxed Group of Coaches and Wagons; Including; Stanier Composite BR Crimson/Cream (Missing Couplings), Restaurant Car BR Crimson/Cream, BR Mk1 CK Green (1 Coupling Missing), Pullman Car 74 Gresley Bogies, 6 x Assorted Wagons inc Brake Van. Conditions Are Fair to Good. Plus EDL12 Duchess of Montrose for Spare or Repairs and D1 Level Crossing Boxed.

**Estimate:** £50-60



**Lot No. 363**

Hornby Dublo EDP2 Set with LMS Duchess of Atholl Locomotive with tender, two coaches and track. Box is damaged and missing ends (See photos). Conditions are Fair to Good in Poor to Fair box.

**Estimate:** £30-50



**Lot No. 364**

Hornby Dublo 3-rail Early Post-War EDL7 0-6-2 LNER N2 Class Steam Locomotive No. 9596 with Horseshoe Chassis. Condition is Good Plus in generally Good box with NE sticker to end of box.

**Estimate:** £40-60



**Lot No. 365**

Hornby Dublo 3-rail Assortment of wagons - to include Esso Tanker, Fletton Brick bogie wagon, LMS Break van plus others. Conditions: Good Plus to Excellent in Good Plus boxes.

**Estimate:** £40-60



**Lot No. 366**

Hornby Dublo Station Structures - to include DA 458 Signal Cabin, D455 Through Station & DA 456 Island Platform. All appear complete and are in Good Plus in Good Plus to Excellent boxes.

**Estimate:** £40-60



**Lot No. 367**

Hornby Dublo & Merit items - to include Track and pointwork, plus Level Crossing and Footbridge plus scenic detailing items. Conditions: Good Plus to Excellent Plus.

**Estimate:** £50-70



**Auction E069**  
**Model Train Auction - Day 1 on 30 July 2025**



**Lot No. 368**

Tri-ang OO Gauge Hornby (GB) & Similar rolling stock - An assortment of 19 Coaches and 18 Wagons. Conditions: Generally Fair to Good.  
**Estimate:** £50-70



**Lot No. 369**

Tri-ang Group of Unboxed Wagons. Comprising; 2 x Cattle Wagon, 3 x Horsebox, 2 x Bolster Wagon, 1 x Cable Drum Wagon with 'Pirelli General' Drums, 6 x Small Tanker (1 with End Missing), 1 x 16T Small Mineral, 2 x 7-Plank Drop Door Wagon and 5 x 7-Plank Open (1st Type). Conditions Are Fair to Good. See Photo.  
**Estimate:** £40-50



**Lot No. 370**

Hornby (GB) OO Gauge Tri-ang items - to include R.855 Flying Scotsman, R.52 3F Steam tank, R.357 Class 31 D5572, plus assorted boxed and unboxed carriages & freight wagons. Conditions: Generally Good Plus to Excellent Plus in Good Boxes where relevant.  
**Estimate:** £60-80



**Lot No. 371**

Tri-ang OO Gauge Clockwork trainset - to include static display locomotives from Atlas Editions, Playcraft E4 Power unit, sectional track plus other items. Conditions: Poor to Fair  
**Estimate:** £40-60



**Lot No. 372**

Tri-ang TT Unboxed Group of Locomotives and Wagons. Comprising; 2 x T90 Jinty 0-6-0T, 3 x T74 Milk Tank Wagons (1 No Ladders), T70 16T Mineral Wagon (Damage to 1 Side of Body) and 2 x T170 Ore Hoppers (Damage to Corner Stanchions). Plus 00 R755 'Continental' Tank 0-4-0T. Conditions Are Fair to Good. See Photo.  
**Estimate:** £40-50



**Lot No. 373**

Tri-ang-Hornby R. 346 Stephenson's Rocket Locomotive & Coach - this Locomotive has Smoke Generator fitted. Condition is Excellent Plus in Good Box (some ware and tearing to box).  
**Estimate:** £50-70



**Lot No. 374**

Exemplary Group of Boxed Tri-ang Railways Locomotive and Carriages. Consisting Of; R59 Standard Class 3MT 2-6-2T BR Lined Green Late Crest and See Through Wheels. Excellent Plus Condition with Cardboard Rings for Packing in Good Plus Box. 2 x R622 BR Mk1 CK in SR Green (Post '64 Yellow Stripe) S15873, R623 BR Mk1 BSK SR Green S34936 and R624 BR Mk1 RMB SR Green (Post '64 Red Stripe) S1851. Conditions Are Excellent Plus to Near Mint in Good to Good Plus Boxes.  
**Estimate:** £50-60



**Lot No. 375**

Exemplary Group of Boxed Tri-ang Railways Wagons and Points. Consisting of; R342 Car Transporter with Pristine Minix Cars, R18 Bogie Well Wagon Green, R247 Bogie Tank Wagon 'ICI' Red, R10 Open Wagon Box (With R11NP Blue Van Inside), R14 Fish Van, R15 Milk Wagon, R16 E.R. Brake Van, R18 Cable Drum Wagon, R122 Cattle Wagon, R124 Brake Van and R561 "Tri-ang" Container Wagon. Plus 2 x Rr491 r/H Points. Conditions Are Excellent Plus to Near Mint in Good Plus to Excellent Boxes.  
**Estimate:** £40-50

**Auction E069**  
**Model Train Auction - Day 1 on 30 July 2025**



**Lot No. 376**

Triang Railways/Spot-On Arkitek OO/HO Gauge Items to include Construction Set No.B - contains plastic components including windows, baseplates etc, unchecked for completeness but does come with a handbook/catalogue and appears to have been used. Conditions: Generally Good to Good Plus. Along with The Midlander train set with additional track, transformer and other items.

**Estimate:** £70-90



**Lot No. 377**

Rosebud Kitmaster TT Gauge & Tri-ang items - various kitmaster coaches in varied states of assembly plus assorted Tri-ang wagons and chassis parts. Conditions: Generally Fair to Good.

**Estimate:** £50-70



**Lot No. 378**

Tri-ang OO Gauge items - featuring R.23 Operating Mail Set, R.170 Twin track level crossing & R.81 Station Set. Conditions: Excellent to Excellent Plus in fair to Excellent Plus boxes.

**Estimate:** £50-70



**Lot No. 379**

Tri-ang OO Gauge Or similar Locomotives - tom include various incarnations of Princess Elizabeth in BR Black (lined & unlined) and BR Green Plus other items. Conditions: Fair to Good.

**Estimate:** £60-80



**Lot No. 380**

Tri-ang OO gauge Sets - Sets Featuring RS.4 with Locomotive, three wagons and a bundle of track, & RS.1 with Princess Elizabeth Locomotive and two coaches plus track, Unchecked for completeness. Conditions: Generally Good to Good Plus in Fair to Good boxes.

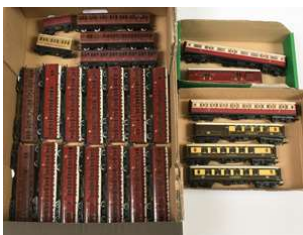
**Estimate:** £50-70



**Lot No. 381**

Tri-ang OO Gauge items - to include box for R3X Goods Set, R.52 Class 3F Tank Loco plus R.332 & 333, two Wrenn W4652 plus other items. Conditions: Fair to Good Plus in Poor to Good boxes.

**Estimate:** £50-70



**Lot No. 382**

Tri-ang OO Gauge Modified Coaches - clerestory roof coaches repainted in maroon N.E.R. livery, plus Tri-ang Pullman coaches Plus other items. Conditions: Fair to Good

**Estimate:** £70-90



**Lot No. 383**

Wrenn & Tri-ang OO Gauge Locomotives - W2224 2-8-0 Loco and Tender BR black class "8F", has been repainted and renumbered to LMS 8029, plus R.861 "Evening Star" locomotive with magazine cutting from Modelling press. Conditions: Fair to Good in Generally Good boxes.

**Estimate:** £50-70



**Lot No. 384**

N & OO Gauge Mixed Group of items -to include kit built OO Gauge GWR locomotive, plus Graham Farish Shredded Wheat (non powered) locomotives and coaches with kit mde buildings. Conditions: Fair to Good.

**Estimate:** £40-60



**Lot No. 385**

Dapol and Airfix OO Gauge Large Group of Unbuilt Rolling Stock and Trackside Kits. To include Dapol C009 Deltic Prototype Kit Plus Others (See Photo). Conditions are Good to Excellent (Unchecked for Completeness) in Fair to Good Boxes and Packaging (There Are 2 Grip Seal Bags With Kit Parts). (47)

**Estimate:** £50-60



**Lot No. 386**

Airfix group of 23x Built and Unbuilt kits to include 5x 8t Cattle Wagons plus others (see photo). Conditions are are Good to Excellent (some items are already built or partly bult and all items are unchecked for completeness or correctness) in Good boxes.

**Estimate:** £40-60



**Lot No. 387**

Wills, Model Scene, Peco and Similar OO Gauge group of 70x unbuilt kits plus 1x N Gauge unbuilt kit in boxes and packaging to include 2x Model Scene Ref. 5010 Railway Containers plus others (see photo). Conditions are generally Good Plus to Excellent (unchecked for completeness or correctness) in Good boxes

**Estimate:** £80-100



**Lot No. 388**

Hornby (GB & China) and Bachmann OO Gauge group of 4x Grouping Era Steam Locomotives to include Bachmann Ref. 31-952A LNER Silver Grey A4 Pacific No. 2512 "Silver Fox" plus others (see photo). Conditions are Good Plus to Excellent in Good boxes.

**Estimate:** £60-80



**Lot No. 389**

Ian Kirk EM Gauge or similar LNER Teak Coaches - Kit built Coaches with mostly EM (verified with Back to Back gauge) with tension hook couplers. Conditions: Generally Fair to Good.

**Estimate:** £70-90



**Lot No. 390**

Tri-ang OO Gauge Modified clerestory Roof plus others - to include Ratio, AKs Models, kit built and repainted to a fair standard. Conditions: Fair to Good.

**Estimate:** £40-60



**Lot No. 391**

Tri-ang OO Gauge Modified/Kit Built Freight stock - Painted in North Eastern or private owner livery markings. Conditions: Fair to Good.

**Estimate:** £70-90



**Auction E069**  
**Model Train Auction - Day 1 on 30 July 2025**



**Lot No. 392**

Mainline OO Gauge or similar - Modified & repainted wagons, some with added detailing and modified coupling systems. Conditions: Fair to Good.

**Estimate:** £60-70



**Lot No. 393**

Ratio Kitbuilt EM or Similar Gauge wagons - Various regions of wagons and vans with assorted coupling systems, mostly tension-hook. Conditions: Fair to Good

**Estimate:** £60-80



**Lot No. 394**

Airfix OO Gauge & Kitbuilt/Modified chassis and body's - Assortment of Regions and liveries to include GER & NER locomotives, with modifications added and customised chassis. Conditions: Fair to Good.

**Estimate:** £100-120



**Lot No. 395**

Hornby O Gauge Clockwork tinplate Group of Locomotives - to include a pair of 60199 BR Black locomotives, one with tender, one spares/repair, 60985 with tender Plus others. Conditions: Fair to Good

**Estimate:** £50-70



**Lot No. 396**

Hornby O Gauge Clockwork tinplate items - to include 60985, 2595, No.1 Passenger coaches, Goods Brake van in NE livery, plus other items. Conditions: Generally Good Plus to Excellent Plus in Good boxes.

**Estimate:** £60-80



**Lot No. 397**

Hornby O Gauge clockwork Streamlined 0-4-0 Loco and Tender LNER Streamlined "Silver Link" 2509, plus a selection of Pullman coaches, plus other items.

**Estimate:** £70-90



**Lot No. 398**

Hornby O Gauge Tinplate Clockwork items - to include a group of LMS Wagons plus locomotive, private owner wagons, a pair of No2 Double arm signals, Plus other items & Spares Repairs items. Conditions: Generally Good Plus to Excellent in Good Boxes.

**Estimate:** £60-80



**Lot No. 399**

Hornby O Gauge Tinplate assortment - to include two No.501 Locomotives, one Numbered 82011 & 5600, and No.30 45746, plus assorted coaches and wagons. Conditions: Generally Good Plus to Excellent in Good boxes.

**Estimate:** £50-70



**Lot No. 400**

Hornby O Gauge Tinplate Clockwork items - to include three No.30 Locomotives 45746 plus tenders along with a wagon and three coaches. Conditions: Good Plus to Excellent Plus in Good boxes

**Estimate:** £60-80



**Lot No. 401**

Joe Works H0e 2-6-6T DSP&P Mason Bogie Steam Locomotive (in wrong box). Paintwork has rubbed away. Conditions: Good Plus to Excellent.

**Estimate:** £60-80



**Lot No. 402**

Zueke HOm Scale Deutsche Reichsbahn Passenger Train Pack Containing 1x 0-10-0T Class 99 Steam Locomotive and 3x Coaches. Conditions is Excellent in Good box (some writing on box)

**Estimate:** £40-50



**Lot No. 403**

Kiss/Miho Om Scale Furka Oberalp Bahn HGe 4/4 I Electric Bo-Bo Rack Locomotive No. 31. Condition is Good to Good Plus (please note that two window are dislodged but contained within body in Good Box (please note Box is incorrect for model).

**Estimate:** £60-80



**Lot No. 404**

Togmodelle HOm Scale 100 year Thamshavnbanen Anniversary (10/07/1908 - 10/07/2008) Electric King Carriage. Condition is generally Good Plus (one coupling broken from Locomotive but included in box) in Good box.

**Estimate:** £50-70



**Lot No. 405**

Parkside Dundas OO9 Narrow Gauge items - to include 4x DM18 W.W.1. Class D Dropside wagons, 3x DM20 W.W.1. War Dept bogies Plus other items. Conditions: Generally Excellent Plus to Near Mint, unchecked for completeness.

**Estimate:** £50-70



**Lot No. 406**

Liliput & Similar HOe Narrow Gauge items - to include 733 Locomotive & Carriages set, Locomotive requires work to complete as there are no conrods present, Coaches include Egger-bahn, Liliput and Jouef with a group with Clerestory roofs. Conditions: Fair to Good in Fair to Good cases.

**Estimate:** £70-90



**Lot No. 407**

Roco & Similar OO9/HOe Rolling stock - to include 12x tipper hoppers, bogie wagons Plus other items. Conditions: Generally Good to Good Plus.

**Estimate:** £50-70

**Auction E069**  
**Model Train Auction - Day 1 on 30 July 2025**



**Lot No. 408**

Roco HOe 33250 0-6-0 Class 99 Tank Loco No.99 4616. DCC Chip onboard, untested. Front coupling is not present. Conditions: Good Plus to Excellent Plus Excellent Plus to Near Mint box.

**Estimate:** £60-80



**Lot No. 409**

BEMO HOe Narrow Gauge Locomotives - with V52 902 of the DB & 1004 Green with Yellow lining of the Neustadler Kreisbahn A.G.. Conditions: Good Plus to Excellent Plus in Excellent boxes.

**Estimate:** £60-80



**Lot No. 410**

Liliput HOe Narrow Gauge Items - to include Jouef Open air coaches (four are in wrong boxes) Plus Liliput items. Conditions: Appears Good to Good Plus in Fair to Good cases.

**Estimate:** £50-70



**Lot No. 411**

Bemo HOe Plus other locomotives - to include Kit built or similar locomotive shells with Kato chassis, plus others. Loco marked 'WCB 4' also has a DCC decoder fitted (untested). Conditions: Good to Good Plus

**Estimate:** £60-80



**Lot No. 412**

Roco OO9/HOe wagons & vans - to include 34522 Covered Goods Wagon with Brakeman's Cab of the OBB Plus other items. Conditions: Mostly Good Plus to Excellent.

**Estimate:** £60-80



**Lot No. 413**

Roco HOe Gauge No.33233 0-6-0 Loco and Tender grey EDW. Conditions: Excellent Plus to Near Mint in Excellent Plus box.

**Estimate:** £80-100



**Lot No. 414**

Busch HO Scale Rolling stock - to include 12200BUS Pack of two tipper wagons, 12250 Wagen Fur Feldbahn plus others. Conditions: Excellent Plus to Near Mint in Excellent Plus to Near Mint cases.

**Estimate:** £50-70



**Lot No. 415**

Busch HO Scale Locomotives - 5010 Mining Locomotive & 12131 Diesel Locomotive. Conditions: Excellent Plus to Near Mint in Excellent Plus cases.

**Estimate:** £80-100



**Auction E069**  
**Model Train Auction - Day 1 on 30 July 2025**



**Lot No. 416**

Busch HO of Motorised chassis - three 12199 chassis units, Conditions: Assumed Near Mint to Mint in Excellent Plus to Near Mint cases.

**Estimate:** £70-90



**Lot No. 417**

Busch HO of Scale items - to include 5011 Grey Mine Loco B 360, 12200 Pack of two tipper wagons & 12250 Wagen Fur Feldbahn. Conditions: Generally Excellent Plus to Near Mint in Excellent Plus cases.

**Estimate:** £70-90



**Lot No. 418**

Busch HO of Locomotives and rolling stock - including two motorised locomotives plus a large amount of unboxed hopper & flatbeds.

**Estimate:** £50-70



**Lot No. 419**

Roco HO of/OO9 Continental locomotives - to include Bemo Railcar, Egger-Bahn No2 Steam Loco, Class U43 of the StLB Plus others. Conditions: Fair to Good Plus.

**Estimate:** £80-100



**Lot No. 420**

Bemo HOm 1255 134 RHB brown livery type GE6/6 Krokodil Overhead Electric Loco No.414. Conditions: Excellent to Excellent Plus in generally Excellent to Excellent Plus box.

**Estimate:** £80-100



**Lot No. 421**

Bemo HOm Locomotives - 1259-101 Class Ge 4/4 III 641 of the RhB & 1259-113 Class Ge 4/4 III 643 'EMS' of the RhB. Conditions: Excellent to Excellent Plus in Excellent Boxes.

**Estimate:** £80-100



**Lot No. 422**

Bemo HOm Locomotives pair - RHB Overhead Electric Locos 1256 122 green livery type GR2/4 No.203 & 1254 Bo-Bo-Bo RHB green livery type GE 6/6 Overhead Electric Articulated Loco No.703 'St. Moritz'. Conditions: Excellent to Excellent Plus in Excellent Plus boxes.

**Estimate:** £80-100



**Lot No. 423**

Bemo HOm Locomotives - 1258 128 No.616 "Filisur" & 1254/7 Bo-Bo-Bo red livery type GE6/6 No.707 "Scul". Conditions: Excellent to Excellent Plus in Excellent Boxes.

**Estimate:** £80-100

**Auction E069**  
**Model Train Auction - Day 1 on 30 July 2025**



**Lot No. 424**

Bemo H0m Narrow Gauge 1250 131 RhB Overhead Electric Locomotive Ge 4/4 in red 'Silvretta' & 1258 21 RhB Ge 4/4 RhB 602. Conditions: Excellent to Excellent Plus in Excellent Plus boxes.

**Estimate:** £80-100



**Lot No. 425**

Bemo H0m Narrow Gauge Locomotives - 1258-19 Class Ge 4/4 II 621 of the RhB 'Felsberg' & 1258109 Bemo H0m RhB Ge 4/4.2 619 'Samedan' green. Conditions: Excellent to Excellent Plus in Excellent Boxes.

**Estimate:** £80-100



**Lot No. 426**

Bemo H0m 7215 100 Train Pack containing Rh B Bo-Bo type GE4/4 Overhead Electric Loco No.601 "Albula" along with 3 x Passenger Coaches (1st Class, 2nd Class and 1st/2nd Class). Condition Excellent Plus to Near Mint in Excellent Plus box.

**Estimate:** £80-100



**Lot No. 427**

Bemo H0m Narrow Gauge OHE Railcars - 1265/1 & 2 type ABE4/4 Triabwagen of the RhB in tonal red liveries. Conditions: Excellent to Excellent Plus in Excellent boxes.

**Estimate:** £80-100



**Lot No. 428**

Bemo 3272-S Set of 4 Pullman Passenger Cars in Red & Cream of the RhB A1141-1144. Conditions: Excellent to Excellent Plus in Excellent Plus box.

**Estimate:** £70-90



**Lot No. 429**

Bemo H0m Narrow Gauge Freight Wagons - to include 7450 100 4 van set, 2278-113 Sliding Wall Wagon "Valser", 2252-111 Cement silo wagon Uce 8001 of the RhB plus others. Conditions: Fair to Good Plus to Excellent Plus in Fair to Good Plus window boxes.

**Estimate:** £70-90



**Lot No. 430**

Bemo H0m Narrow Gauge Freight Wagons assortment - to include 2278 Sliding Wall Van with Brake Platform 'Rhazunser' Plus others. Conditions: Good to Good Plus in Fair to Good Window boxes, some panels are damaged.

**Estimate:** £70-90



**Lot No. 431**

Bemo H0m Rhb Coaches - Assortment of 18 coaches to include Restaurant car and baggage cars. Conditions: Excellent to Excellent Plus in Good to Excellent Boxes.

**Estimate:** £80-100



**Lot No. 432**

Bemo HOm Assortment of Passenger stock - to include a pair of open air touring style wagons in yellow plus Green & Red liveried RhB coaching stock. Conditions: Generally Good Plus to Excellent in Fair to Excellent boxes.

**Estimate:** £80-100



**Lot No. 433**

Bemo HOm Pair of RhB Red Ge 4/4 II Electric Locomotives comprising of No. 618 "Bergün Bravuogn" & No. 621 "Felsberg". Conditions are Good (some items are loose in boxes and unchecked for completeness) to Excellent in Good boxes.

**Estimate:** £70-90



**Lot No. 434**

Bemo HOm Pair of RhB Green Ge 4/4 II Electric Locomotives comprising of No. 612 "Thusis" & No. 619 "Samedan". Conditions are Good to Excellent (some items are loose in boxes and unchecked for completeness - "Thusis has one damaged pantograph) in Good boxes (boxes may be incorrect).

**Estimate:** £60-80



**Lot No. 435**

Bemo HOe (009 Gauge) pair of RhB Brown Ge 6/6 I Electric 'Crocodile' Locomotives comprising of No. 411 & No. 413. Conditions are Good to Excellent (some items are loose in boxes and unchecked for completeness) in Good boxes (boxes may be incorrect).

**Estimate:** £80-100



**Lot No. 436**

Bemo HOm Pair of RhB Green Ge 4/4 I Electric Locomotives comprising of No. 610 "Viamala" & No. 608 "Madrisa". Conditions are Good to Excellent (some items are loose in boxes and unchecked for completeness in Good boxes (boxes may be incorrect).

**Estimate:** £70-90



**Lot No. 437**

Bemo HOm group of Pair RhB Green Ge 4/4 I Electric Locomotives comprising of No. 609 "Linard" & No. 605 "Silvetta". Conditions are Good to Excellent (some items are loose in boxes and unchecked for completeness in Good boxes (boxes may be incorrect).

**Estimate:** £70-90



**Lot No. 438**

Bemo HOm pair of Green Ge 4/4 I Electric Locomotives comprising of No. 603 "Badus" & No. 604 "Calandra". Conditions are Good to Excellent (some items are loose in boxes and unchecked for completeness in Good boxes (boxes may be incorrect).

**Estimate:** £70-90



**Auction E069**  
**Model Train Auction - Day 1 on 30 July 2025**



**Lot No. 439**

Bemo HOm group of Pair RhB Green Ge 4/4 I Electric Locomotives to include No. 602 "Bernina" & No. 606 "Kesch". Conditions are Good to Excellent (some items are loose in boxes and unchecked for completeness in Good boxes (boxes may be incorrect).

**Estimate:** £70-90



**Lot No. 440**

Bemo HOm pair of RhB Green Ge 4/4 I Electric Locomotives comprising of No. 601 "Albula" & No. 607 "Surselva". Conditions are Good to Excellent (some items are loose in boxes and unchecked for completeness in Good boxes (boxes may be incorrect).

**Estimate:** £70-90



**Lot No. 441**

Bemo HOm pair of RhB Red Tm 2/2 Diesel Tractor Locomotives comprising of Ref. 1274-191 No. 91 (with covered platform) & Ref. 1273-65 No. 65 (uncovered platform). Conditions are Good (some items are loose in boxes and unchecked for completeness) to Excellent in Good boxes.

**Estimate:** £70-90



**Lot No. 442**

Bemo HOm Pair of Furka-Oberalp Red Ge 4/4 III Electric Locomotives comprising of No. 81 & No. 82. Conditions are Good (some items are loose in boxes and unchecked for completeness) to Excellent in Good boxes .

**Estimate:** £70-90



**Lot No. 443**

Bemo HOm pair of RhB Green Ge 6/6 II Electric Locomotives comprising of No. 701 "Rawtia" & No. 705 "Puntraschigna". Conditions are Good to Excellent (some items are loose in boxes and unchecked for completeness) in Good boxes (boxes may be incorrect).

**Estimate:** £80-100



**Lot No. 444**

Bemo HOm Ref 1265/1 RhB Red ABe 4/4 Railcar No 502. Condition is Excellent (unchecked for completeness) in Good box.

**Estimate:** £70-90



**Lot No. 445**

Bemo HOe Gauge group of 11 Boxed German Outlined Green Coaches and Vans to include Ref. 3002 822 Personenwagen Kb4i 02 Stg 2. Klasse "Raucher" plus others (see photo). Conditions are generally Good to Excellent in Good boxes.

**Estimate:** £70-90



**Lot No. 446**

Bemo HOe Gauge group of 13x Boxed German Outlined Freight Wagons & Vans to include Ref. 2006 DB Wagen HSM 78 Langholzswagen plus others (see photo). Conditions are generally Good to Excellent in Good boxes.

**Estimate:** £60-80



**Lot No. 447**

Bemo HOe group of 16x RhB Passenger Coaches and Freight Wagons to include Ref. 3290 Blue and Cream Personenwagen MOB plus others (see photos). Conditions are Good Plus to Excellent in Good Plus boxes (some items maybe in incorrect boxes and some boxes state HOM but items are gauged to HOe standards).

**Estimate:** £70-90



**Lot No. 448**

Bemo HOe group of 12x RhB Green Passenger Coaches and Freight Wagons to include Ref. 3050 2nd Class Passenger Coaches No. B2362 plus others (see photos). Conditions are Good Plus to Excellent in Good Plus boxes (please note some boxes are incorrect for the item in the box and some items are indicated to be HOM but are set to HOe standard).

**Estimate:** £80-100



**Lot No. 449**

Bemo HOe group of 12x RhB and Furka-Oberalp Red Passenger Coaches and to include Ref. 3066 Furka-Oberalp 2nd Class Coaches No. B4270 plus others (see photos). Conditions are Good Plus to Excellent in Good Plus boxes (please note some boxes are incorrect for the item in the box and some items are indicated to be HOM but are set to HOe standard).

**Estimate:** £70-90



**Lot No. 450**

Bemo HOe group of 16x RhB Passenger Coaches and Freight Wagons and to include Ref. 3066 2270 RhB Yellow Werkzeugwagen No. Xbk9089 plus others (see photos). Conditions are Good Plus to Excellent in Good Plus boxes (please note some boxes are incorrect for the item in the box).

**Estimate:** £80-100



**Lot No. 451**

Bemo HOe Ref. 1233 833 Deutsch Reichsbahn Treibwagen VT133 523 Der Spreewaldbahn. Conditions is Good Plus to Excellent in Good box.

**Estimate:** £60-80



**Lot No. 452**

Bemo HOe group of 3x Schmalspur-Diesellokomotive Baureihe V51/V52 Class Locomotives No's V51 901, V51 902 & V51 903. Conditions are Good Plus to Excellent in Good boxes.

**Estimate:** £60-80



**Lot No. 453**

Bemo HOM group of 9x RhB Red Passenger Coaches to include Ref. 3268 1st Class Passenger Coach plus others (see photos). Conditions are Good Plus to Excellent in Good Plus boxes (some items maybe in incorrect boxes and some boxes state HOe but items are gauged to HOM standards).

**Estimate:** £60-80



**Lot No. 454**

Liliput HOe Gauge group of 10x German Outline Coaches and Wagons to include Ref. 750 Murtalbahnhof Packwagen plus others (see photo). Conditions are generally Good to excellent (unchecked for completeness or correctness) in Good boxes.

**Estimate:** £50-60

**Auction E069**  
**Model Train Auction - Day 1 on 30 July 2025**



**Lot No. 455**

Egger-Bahn HOe Gauge group of 24x Coaches and Wagons to include 4x Ref. 5002 Composite 4 Wheel 2nd/3rd Class Green Balcony plus others (see photo) Conditions are generally Good to Excellent in Good boxes.

**Estimate:** £50-60



**Lot No. 456**

Egger-Bahn HOe group of 6x Diesel & Electric Locomotives to include 3x Ref. P16 Electric Locomotives No. 3 (one has red frames and two have black), 2x Ref. P15 Diesel Locomotives No. 1 & 1x Ref. p11 Diesel Works Locomotive No. 4 Conditions are generally Good to Excellent in Good boxes) (boxes are individual names on them)

**Estimate:** £60-80



**Lot No. 457**

Egger-Bahn group of 4x Steam Locomotives to include Ref. P13 Blue & Cream Articulated Steam Railcar plus others (see photo). Conditions are generally Good to Excellent (one locomotive is missing couplings and evidence of perished foam in one box) in Good boxes (each box individually named).

**Estimate:** £50-70



**Lot No. 458**

Jouef/Playcraft HOe mixed group of Locomotive, Coach, Track and Train Set to include Ref. V01 Train Set with Locomotive, 3x Wagons, an oval of track and re-railer, 1x Ref. P10 Decauville Style Green 0-4-0 Tank Engine, 1x Ref. P40 Bogie Open Passenger Coach and 3x P81 Left Handed Points. Conditions are generally Good Plus to Excellent (unchecked for completeness or correctness) in Good boxes (some boxes have writing on them).

**Estimate:** £60-80



**Lot No. 459**

Corgi/Bassett-Lowke O Gauge "N Class Mogul" SR green No. 1864, Suitable for 2 & 3-rail Electric. No. 260 of a limited edition. Complete with operating instructions and Bassett-Lowke cloth. Conditions: Excellent to Excellent Plus in Excellent Box

**Estimate:** £140-160



**Lot No. 460**

Chad Valley UBILDA tinplate clockwork LMS - made-up model as a 4-4-2 Steam and Tank Locomotive in red LMS livery with yellow trim with black smokebox and wheels, and a key. Along with Hornby (GB) LMS Coronation, unboxed. Conditions Generally Good Plus to Excellent, comes in a Good card box.

**Estimate:** £50-70



**Lot No. 461**

Dapol O Gauge Modern Issue Ref 7D-008-011 Class 08 BR blue Diesel Locomotive No. 08173, one cab internal window is loose, otherwise Excellent to Excellent Plus in Excellent box.

**Estimate:** £80-100



**Lot No. 462**

Wilag Gauge 1 Deutsch Reichsbahn 8-Wheeled Birdcage Baggage Car No. 19441. Condition of this item is Excellent to Excellent Plus.

**Estimate:** £180-200





**Lot No. 463**

Wilag (Replica Marklin) Gauge 1 Deutsch Reichsbahn 8-Wheeled Baggage Car No.19451. Condition of this item is Excellent to Excellent Plus.

**Estimate:** £180-200



**Lot No. 464**

Wilag (Replica Marklin) Gauge 1 Deutsch Reichsbahn 8-Wheeled 2nd/1st/2nd Coach No. 19411 "Stuttgart - München". Condition of this item is Excellent to Excellent Plus.

**Estimate:** £180-200



**Lot No. 465**

Wilag (Replica Marklin) Gauge 1 Mitropa Maroon 8-Wheeled Speisewagen "Basel-Amsterdam". Condition of this item is Excellent to Excellent Plus.

**Estimate:** £180-200



**Lot No. 466**

Wilag (Replica Marklin) Gauge 1 Mitropa Maroon 8-Wheeled Schlafwagen "Amsterdam-Milano". Condition of this item is Excellent to Excellent Plus.

**Estimate:** £180-200



**Lot No. 467**

Fa Berendt (Replica Marklin) Gauge 1 Compagnie Internationale des Wagons-Lits Blue 8-Wheeled Sleeping-Car/Dining-Car No. 19421 "Stuttgart -Paris". This coach was hand built by Fa Berendt of Stuttgart and is stamped "Made in Germany. It is made to an incredibly high standard reflecting its Marklin inspiration. Condition of this item is Excellent to Excellent Plus.

**Estimate:** £180-200



**Lot No. 468**

Fa Berendt (Replica Marklin) Gauge 1 Deutsch Reichsbahn 8-Wheeled 2nd/1st/2nd Coach No. 19411 "Berlin - Stuttgart". This coach was hand built by Fa Berendt of Stuttgart and is stamped "Made in Germany. It is made to an incredibly high standard reflecting its Marklin inspiration. Condition of this item is Excellent to Excellent Plus.

**Estimate:** £180-200



**Lot No. 469**

Fa Berendt (Replica Marklin) Gauge 1 Deutsch Reichsbahn 8-Wheeled 2nd/1st/2nd Coach No. 19411 "Stuttgart - Paris". This coach was hand built by Fa Berendt of Stuttgart and is stamped "Made in Germany. It is made to an incredibly high standard reflecting its Marklin inspiration. Condition of this item is Excellent to Excellent Plus.

**Estimate:** £180-200



**Lot No. 470**

Fa Berendt (Replica Marklin) Gauge 1 Deutsch Reichsbahn 8-Wheeled Baggage Car No.19451. This coach was hand built by Fa Berendt of Stuttgart and is stamped "Made in Germany. It is made to an incredibly high standard reflecting its Marklin inspiration. Condition of this item is Excellent to Excellent Plus.

**Estimate:** £180-200



**Lot No. 471**

Fa Berendt (Replica Marklin) Gauge 1 3-RAIL German Outline Baureihe 1 4-6-2 No. HB 12921. This Locomotive was converted from 20V AC 3-Rail to DC 3-Rail by Fa Berendt of Stuttgart and is stamped "Made in Germany". It is made to an incredibly high standard reflecting its Marklin inspiration. Condition of this Locomotive is Excellent to Excellent Plus, in a good if not original box.

**Estimate:** £600-700



**Lot No. 472**

Gauge 1 Scratch built flat wagons with Balfour Beatty/Network Rail tagged loads. Conditions: Built to a Very Good standard.

**Estimate:** £60-80



**Lot No. 473**

Gauge 1 MK Coach M25200 RP123.SK Second Corridor Passenger Coach Crimson & Cream livery. Conditions: Good Plus to Excellent.

**Estimate:** £60-80



**Lot No. 474**

Marklin Gauge 1 Network Rail Permanent Way Equipment - with three crane wagons and one flatbed with container. Conditions: Fair to Good.

**Estimate:** £80-100



**Lot No. 475**

Gauge 1 Wagons - A selection of scratch/kit built regional and private owner wagons. Conditions: Fair to Good.

**Estimate:** £60-80



**Lot No. 476**

Gauge 1 Wagons - A selection of scratch/kit built regional and private owner wagons. Conditions: Fair to Good.

**Estimate:** £60-80



**Lot No. 477**

Gauge 1 Wagons - A selection of scratch/kit built regional and private owner wagons plus tanker and flatbed wagon. Conditions: Fair to Good.

**Estimate:** £60-80



**Lot No. 478**

Marklin Gauge 1 & Similar Network Rail permanent way Cranes and other equipment. Conditions: Fair Excellent Plus.

**Estimate:** £70-90



**Lot No. 479**

BMS (Accucraft) Gauge 1 R32-13B Carmine & Cream M13093 1st Class coach. Conditions: Excellent to Excellent Plus.

**Estimate:** £80-100



**Lot No. 480**

Aristocraft Trains (Bachmann) Gauge 1 Twin Intermodal containers & Wagons, with DHL livery containers. Conditions: Excellent to Excellent Plus in Fair to Good Box.

**Estimate:** £80-100



**Lot No. 481**

Aristo Craft Gauge 1 No. ART-50801 pair of twin Inter Modal DHL pair of Containers and Wagons. Conditions: Excellent to Excellent Plus in Fair to Good box.

**Estimate:** £80-100



**Lot No. 482**

Aristo Craft Gauge 1 Class 66 in DB Schenker Livery with remote control unit. Conditions: Generally Good Plus to Excellent, with some minor surface scratches from use.

**Estimate:** £120-160



**Lot No. 483**

Aristocraft Gauge 1 Class 66 - Repainted to GBRf grey livery, numbered 66747 with remote control unit. Conditions: Fair to Good in Good Box.

**Estimate:** £120-140



**Lot No. 484**

Aristocraft Gauge 1 Class 66 GBRf Locomotive - in Union Jack 'Jubilee' livery No 66705. Comes with remote unit. Conditions: Good to Good Plus, pin end has been added to aid switch cover removal.

**Estimate:** £120-140



**Lot No. 485**

Aristocraft A50803 2 x Intermodal bogie wagons with 2 x 45ft containers "Malcolm Logistics". Conditions: Good Plus to Excellent.

**Estimate:** £70-90



**Lot No. 486**

Aristocraft A50803 2 x Intermodal bogie wagons with 2 x 45ft containers "Malcolm Logistics". Conditions: Mostly Fair to Good Plus, a couple of container location pin positions are detached from the chassis.

**Estimate:** £70-90





**Lot No. 487**

Aristocraft Gauge 1 Class 66 Locomotive - repainted to fair standard in Network Rail yellow with Nameplate etch 'DAVID ROGERS' with additional weathering on bogies and frames. Conditions: Fair to Good.

**Estimate:** £90-110



**Lot No. 488**

Aristocraft Gauge 1 Intermodal wagons - boxed as ART-50803 'Malcolm Logistics', one container has been repainted to blue with 'KFC' & 'Pepsi' logos. Conditions: Fair to Good Plus.

**Estimate:** £70-90



**Lot No. 489**

Aristocraft Gauge 1 Intermodal wagons set - repainted to blue with 'KFC' & 'Pepsi' logos. Conditions: Generally Fair to Good in Good Box.

**Estimate:** £60-80



**Lot No. 490**

Aristo Craft Gauge 1 No. ART-50801 pair of twin Inter Modal DHL pair of Containers and Wagons. Conditions: Excellent to Excellent Plus in Fair to Good box.

**Estimate:** £80-100



**Lot No. 491**

Aristocraft A50803 2 x Intermodal bogie wagons with 2 x 45ft containers "Malcolm Logistics". Conditions: Good Plus to Excellent.

**Estimate:** £80-100



**Lot No. 492**

Aristocraft Gauge 1 ART-50802 ECS Containers set. Conditions: Generally Good to Good Plus.

**Estimate:** £80-100



**Lot No. 493**

The Gauge 1 Model Company - with RP121.BSK Brake Second Corridor Passenger Coach in Crimson & Cream livery with running number M35072. Conditions: Good Plus to Excellent.

**Estimate:** £80-100



**Lot No. 494**

Gauge 1 Scratch built Network Rail DMU 4-car set, liveried as a Structure Gauging Train in Network Rail Yellow with Fosworks OMNI Tx-2.0 wireless controller. Built to a fair standard for outside running. Conditions: Fair to Good.

**Estimate:** £180-200



**Lot No. 495**

Gauge 1 Scratch built Class 121 style DMU cars in Network rail livery. hand built to a fair standard with Omni TX-2.0 remote controllers and sound systems fitted. Conditions: Fair to Good.

**Estimate:** £120-140



**Lot No. 496**

Accucraft BR Mk1 Coach R32-14B - BR Mk1 RESTAURANT MINI-BUFFET (RMB) - CARMINE & CREAM. Conditions: Excellent to Excellent Plus.

**Estimate:** £80-100



**Lot No. 497**

Accucraft Gauge 1 R32-14B BR Mk1 RESTAURANT MINI-BUFFET (RMB) - CARMINE & CREAM. Conditions: Excellent to Excellent Plus with very minor oxidation spots on wheels from running.

**Estimate:** £70-90



**Lot No. 498**

The Gauge 1 Model Company - with RP123.SK Brake Second Corridor Passenger Coach in Crimson & Cream livery with running number E24900. Conditions: Good Plus to Excellent, with some minor scratches from use.

**Estimate:** £70-90



**Lot No. 499**

BMS (Accucraft) Gauge 1 R32-13B Carmine & Cream E13099 1st Class coach. Conditions: Excellent to Excellent Plus.

**Estimate:** £80-100



**Lot No. 500**

RJH Model Railways Gauge 1 TEA 100 Ton bogie tanker P-BRF-115 - has natural weathering from outdoor use. Conditions: Fair to Good

**Estimate:** £70-90



**Lot No. 501**

The Gauge 1 Model Company - with RP123.SK Brake Second Corridor Passenger Coach in Crimson & Cream livery with running number M25045. Conditions: Good Plus to Excellent.

**Estimate:** £80-100



**Lot No. 502**

BMS (Accucraft) Gauge 1 R32-13B BR Mk1 FIRST CORRIDOR (FK) in Carmine & Cream livery, with running number E4050. Conditions: Good Plus to Excellent.

**Estimate:** £80-100



**Lot No. 503**

BMS (Accucraft) Gauge 1 R32 BR Mk1 Corridor Brake Guards van in Carmine & Cream livery, with running number M35248. Conditions: Good Plus to Excellent in Fair box, one end is missing.

**Estimate:** £80-100



**Lot No. 504**

Gauge 1 six unit scratch built German inspired World War Two armoured train, with brown and dark grey camo livery. Motive power unit fitted with receiver for a fosworks OMNI Tx-2.0 and fosworks 2 axle motorised frame. Conditions: Fair to Good.

**Estimate:** £100-120



**Lot No. 505**

Gauge 1 Modern image Rolling stock - to include Kit modified BR MK1 coach in Network Rail Yellow, plus a pair flatbed wagons with 'Balfour Beatty Network Rail' loads. These have been built to a fair standard and have seen use outdoors.

**Estimate:** £80-100



**Lot No. 506**

Marklin Gauge 1 Rolling stock - Modified to Network Rail Livery with added Plant equipment. Conditions: Fair to Good.

**Estimate:** £60-80



**Lot No. 507**

Marklin Gauge 1 Rolling stock - Modified to Network Rail Livery with added Plant equipment plus MATRA 4042 Crane equipment with added Network Rail transfers. Conditions: Fair to Good.

**Estimate:** £60-80



**Lot No. 508**

Gauge 1 Group of Wagons - to include Aristocraft Modern image container frame wagon plus four kit built steam era wagons. Conditions: Fair to Good.

**Estimate:** £50-70



**Lot No. 509**

Gauge 1 Scratch built GWR Collett Style or similar coaches pair with Restaurant Car Plus standard coach. Built to a fair standard and used outdoors.

**Estimate:** £50-70



**Lot No. 510**

Gauge 1 Scratch built coaches - in LMS styled liveries and mixed builder styles. Conditions: Fair to Good.

**Estimate:** £50-70





**Lot No. 511**

Gauge 1 Scratch built Bullied and Stanier based coach stock, finished in LMS livery to a fair standard.

**Estimate:** £50-70



**Lot No. 512**

Kitbuilt Gauge 1 pair of GWR Clerestory Coaches built to a high standard. Conditions are Good Plus to Excellent.

**Estimate:** £70-90



**Lot No. 513**

Kitbuilt Gauge 1 pair of GWR Coaches built to a high standard. Conditions are Good Plus to Excellent.

**Estimate:** £70-90



**Lot No. 514**

Kitbuilt Gauge 1 group of 3x GWR Clerestory Coaches built to a Good standard. Conditions are Good to Excellent (please note the Bogie of one coach may require replacement or repair).

**Estimate:** £60-80



**Lot No. 515**

Kitbuilt/Scratchbuilt Gauge 1 pair of GWR Coaches comprising of a Clerestory Full Brake Coach and Scratchbuilt Bullion Van built to a Good to High standard. Conditions are Good Plus to Excellent.

**Estimate:** £70-90



**Lot No. 516**

Kitbuilt Gauge 1 pair of GWR Clerestory Coaches built to a high standard. One Coach is Stamped "D40 3rd Brake Waterman Collection" on the underframe. Conditions are Good Plus to Excellent.

**Estimate:** £90-110



**Lot No. 517**

RJH Model Railways Gauge 1 TEA 100 Ton bogie tanker "BP" Built to a Good standard though some cleaning required. Condition is Good to Good Plus.

**Estimate:** £60-80



**Lot No. 518**

Marklin Gauge 1 group of 4x Container Wagons to include 2x Ref. 5141, 1x Ref. 5411 & 1x Ref. 5415. Please note that the containers have been repainted & "MSC" Transfers added. Conditions are Good to Good Plus in Good boxes (some cleaning required)

**Estimate:** £80-100



**Lot No. 519**

Marklin Gauge 1 group of 4x Container Wagons to include 2x Ref. 5411 plus others (see photo). Please note that one of the the containers has been repainted & "P&O" Transfers added. Conditions are Fair to Good in Good boxes (some cleaning required and some items are in incorrect boxes)

**Estimate:** £80-100



**Lot No. 520**

Marklin Gauge 1 group of 4x Container Wagons to include Ref. 5410 plus others (see photo). Please note that one of the the containers has been repainted & "P&O" Transfers added. Conditions are Fair to Good in Good boxes (some cleaning required and some items are in incorrect boxes)

**Estimate:** £80-100



**Lot No. 521**

Marklin Gauge 1 group of 4x Container Wagons to include 2x Ref. 80014, 1x Ref. 5411 & 1x Ref. 5414. Please note that the containers have been repainted & "MSC" Transfers added. Conditions are Good to Good Plus in Fair to Good boxes (some cleaning required and some items are in incorrect boxes)

**Estimate:** £80-100



**Lot No. 522**

Marklin Gauge 1 group of 4x Container Wagons to include 2x Ref. 5414 plus others (see photo). Please note that some Containers are in incorrect boxes and some have been repainted. Conditions are Good to Good Plus in Good boxes (some cleaning required and some items are in incorrect boxes)

**Estimate:** £80-100



**Lot No. 523**

Marklin Gauge 1 group of 4x Container Wagons to include 2x Ref. 5415 plus others (see photo). Please note that some Containers are in incorrect boxes and some have been repainted. Conditions are Good to Good Plus in Good boxes (some cleaning required and some items are in incorrect boxes)

**Estimate:** £80-100



**Lot No. 524**

Kit Built/Scratchbuilt Gauge 1 group of 4x ICI Liveried "YGA" "Seacow" Ballast Hoppers (see photo). Built to a Good Plus Standard. Conditions are generally Good with some minor repairs and cleaning required.

**Estimate:** £90-110



**Lot No. 525**

Kit Built/Scratchbuilt Gauge 1 group of 4x ICI Liveried "YGA" "Seacow" Ballast Hoppers (see photo). Built to a Good Plus Standard. Conditions are generally Good with some minor repairs and cleaning required.

**Estimate:** £90-110



**Lot No. 526**

Marklin Gauge 1 group of 5x Unboxed Container Wagons (see photo). Conditions are Good to Good Plus with some cleaning required.

**Estimate:** £90-100



**Lot No. 527**

Marklin Gauge 1 group of 4x Container Wagons to include 2x Ref. 5415 plus others (see photo). Please note that some Containers are in incorrect boxes and some have been repainted. Conditions are Good to Good Plus in Good boxes (some cleaning required and some items are in incorrect boxes)

**Estimate:** £80-100



**Lot No. 528**

Marklin Gauge 1 group of 5x Unboxed Wagons including some that have been given loads (see photo). Conditions are Good to Good Plus with items having been repainted and some cleaning required.

**Estimate:** £80-100



**Lot No. 529**

Marklin & Scratchbuilt Gauge 1 group of 5x Unboxed Wagons including some that have been given loads (see photo). Conditions are Good to Good Plus with items having been repainted and some cleaning required.

**Estimate:** £60-80



**Lot No. 530**

Marklin and Similar Gauge 1 group of 5x Unboxed Network Rail "Yellow" Wagons including Crane Wagons and Wagons with Loads added to them plus 1x Tracked Crane with folded job (see photo). Conditions are Good to Good Plus with items having been repainted and some cleaning required.

**Estimate:** £80-100



**Lot No. 531**

Marklin and Similar Gauge 1 group of 4x Unboxed Network Rail "Yellow" Wagons including a loaded open bogie wagon, a converted Steam Locomotive Tender and 2x Container wagons (see photo). Conditions are Good to Good Plus with items having been repainted and some cleaning required.

**Estimate:** £80-100



**Lot No. 532**

Marklin and Similar Gauge 1 group of 4x Unboxed Network Rail "Yellow" Wagons including a 1x Flat Wagon with VW Beetle, plus others and 2x Industrial Vehicles (see photo). Conditions are Good to Good Plus with items having been repainted and some cleaning required.

**Estimate:** £70-90



**Lot No. 533**

Kitbuilt/ & Modified Gauge group of 3x Bogie wagons with loads added. Built to a Good Plus standard. Conditions are Good to Good Plus with items having been repainted and some small repairs required.

**Estimate:** £90-110



**Lot No. 534**

Marklin and Similar Gauge 1/1:32 Scale mixed group of 17x Containers, Lorries and Similar (see photo). Conditions are generally Good to Good Plus with some cleaning and repair work required. Please note some items have been repainted.

**Estimate:** £50-70

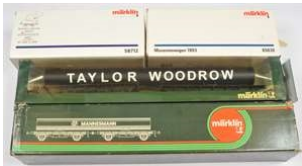




**Lot No. 535**

Kitbuilt or Scratchbuilt Gauge 1 BR Green Class 7MT Britannia Pacific No. 70037 "Hereward the Wake". This Locomotive is Remote Controlled with Fosworks Transmitter/Receiver in the Tender with a charging port under the Tender Chassis (no charging equipment is included). This Locomotive is built to a Good Plus standard. Condition is generally Good to Good Plus with some remedial work for repairs to body and paint work. Please note the Locomotive is untested for working order.

**Estimate:** £120-140



**Lot No. 536**

Marking Gauge 1 group of 3x Wagons to include Ref. 85830 "Museumwagen 1993" plus others (see photo). Conditions are generally Good to Excellent (some have been repainted) in Fair to Good boxes.

**Estimate:** £80-100



**Lot No. 537**

Aristocraft Gauge 1 Ref. ART-50802 Twin Intermodal Container Wagons with Containers. Conditions are generally Good to Excellent (unchecked for completeness or correctness) in Fair to Good box (box has writing on it).

**Estimate:** £60-80



**Lot No. 538**

BMS (Accurcraft) Gauge 1 Ref. 32-12B BR Crimson & Cream Mk1 Second Open Coach No. M4475. Condition is Near Mint in Good Plus box.

**Estimate:** £80-100



**Lot No. 539**

The Gauge 1 Model Company Gauge 1 Ref. RP123.SK BR Crimson & Cream Mk1 Second Corridor Coach No. E24180. Condition is Near Mint in Good Plus box.

**Estimate:** £80-100



**Lot No. 540**

Maxitrak or Similar 'Simplicity' 5 Inch Gauge Battery Locomotive - Appears mostly complete, Control panel features Horn (with car type horn present) Lights, Fuse holder, Brake switch, (Off) On-speed potentiometer and direction control switch. Fitted with a 16Amp RCD fuse in main body on positive connection for battery. Simplicity is in Maroon Blue lining & Yellow warning panels on a fibreglass body. Conditions: Generally Fair to Good Plus. Untested.

**Estimate:** £200-240



**Lot No. 541**

North Eastern Finescale Gauge 1 wagons - a group of mostly Ready-to-Run wagons to include GWR Flatbed wagon with furniture container, NE Fruit van, Ricketts of London Coal hopper Plus others. Conditions: Good to Good Plus.

**Estimate:** £70-90



**Lot No. 542**

Unknown origin Gauge 1 Possible LB&SCR H2 class Component Parts with Boiler, partially built frames and Tender. Many parts appear to be missing, would be an excellent spares/repairs rebuild.

**Estimate:** £80-100

**Auction E069**  
**Model Train Auction - Day 1 on 30 July 2025**



**Lot No. 543**

Marklin Gauge 1 0-4-0 Loco and Tender Circa 1929 Midland maroon No.281, clockwork. Conditions: Overall Good to Good Plus with some minor paint blistering on tender.  
**Estimate:** £120-140



**Lot No. 544**

Kadee O Scale group of 8x Couplings and Accessories to include 5x Ref. 805 Magne-Matic Couplers with Draft Gear plus others (see photo). Conditions are unopened packing so assumed Mint in Good Packaging.  
**Estimate:** £30-40



**Lot No. 545**

Rivarossi & Tri-ang Big Big Train O Gauge group of 12x Wagons and Coaches to include Rivarossi Ref. 7783 German 2nd Class Passenger Coach plus others (see photo). Conditions are generally Good to Excellent in Fair to Good boxes.  
**Estimate:** £60-80



**Lot No. 546**

Rivarossi O Gauge group of 4x Diesel Locomotives to include Ref. 7180 German V160 Diesel Locomotive plus others (see photo). Conditions are generally Good to Excellent in Fair to Good boxes.  
**Estimate:** £50-70



**Lot No. 547**

Marklin & Atlas O Gauge group of 3x Locomotives to include Atlas Illinois Central WDT Industrial Switcher No. 6622 plus others (see photo). Conditions are Good to Excellent in Good boxes.  
**Estimate:** £50-70



**Lot No. 548**

Lionel Trains O Scale 3-Rail Electric group of 16x items including Boxed Locomotive, Tender, Coaches, sectional track to make an oval and Transformer to include Ref. 1688 2-6-2 Locomotives No. 1688E and Ref. 1689T Lionel Lines Tender plus others (see photo). Conditions are generally Fair to Excellent in Fair to Good boxes and original senders box.  
**Estimate:** £80-100



**Lot No. 549**

Marklin O Gauge Mitropa Speisewagen Coach. Lithographed in brown, lined in orange and black with Mitropa to coach sides. plus Passenger coach of the DB & LMS Pre-war carriage. Conditions: Generally Fair to Good with some paint speckling.  
**Estimate:** £50-70



**Lot No. 550**

Rovex The Big Big Train track plus other items - to include an assortment of straight track, Plus a Bassett-Lowke 'Princess Elizabeth' O Gauge EMPTY box and toy locomotive. Conditions: Generally Fair.  
**Estimate:** £30-50

**Auction E069**  
**Model Train Auction - Day 1 on 30 July 2025**



**Lot No. 551**

Lima O Gauge mixed group of Track, Locomotive and Wagon to include Ref. 6546 BR Blue 0-4-0 Diesel Shunter No. 2852 plus others (see photo)> Conditions are generally Good to Excellent (unchecked for completeness or correctness) in Fair to Good boxes.

**Estimate:** £50-70



**Lot No. 552**

Lima O Gauge group of 12x Ref. 6732 BR Bauxite Vacuum Fitted 16t Mineral Wagons. Conditions are Good to Excellent in Fair to Good boxes.

**Estimate:** £60-80



**Lot No. 553**

Lima O Gauge group of 12x Ref. 6732 BR Bauxite Vacuum Fitted 16t Mineral Wagons. Conditions are Good to Excellent in Fair to Good boxes.

**Estimate:** £60-80



**Lot No. 554**

Marklin Gauge 1 group of 4x Container Wagons to include 2x Ref. 5415 with Hapag-Lloyd containers plus others (see photo). Please note that one of the the containers has been repainted & "Hapag-Lloyd" Transfers added. Conditions are Good to Good Plus in Good boxes (some cleaning required)

**Estimate:** £80-100



**Lot No. 555**

LGB & Similar Sectional track - three boxes of 10000 Straight section track along with 24 sections unboxed. Conditions: Poor to Fair, have seen substantial amount of use.

**Estimate:** £80-100



**Lot No. 556**

LGB G Gauge Locomotives & Crane wagon - to include 20212 'No2 LGB', 20600 '5' 'Lehmann Oil' and 'Matra' Crane wagon. Items are soiled through use. Conditions: Fair to Good

**Estimate:** £70-90



**Lot No. 557**

LGB 26420 G Gauge Locomotive - class Ge 4 / 4 III Locomotive Sporting the Maienfeld Shield 641. The outer box is missing but the styrene holder remains. Conditions: Good to Excellent Plus.

**Estimate:** £100-120



**Lot No. 558**

LGB G Gauge - 29432 RhB Rhatische Bahn Set with Locomotive, One coach and two open air carriages. Conditions: Excellent to Excellent Plus in Excellent Plus box.

**Estimate:** £200-240





**Lot No. 559**

LGB G Gauge 25420 Capito RhB Ge 4/4III-Elloks Electric Locomotive. Conditions: Generally Fair to Good, will benefit from a cleaning.

**Estimate:** £150-180



**Lot No. 560**

LGB/Playmobil G Gauge Track and Accessories - to include Massoth train detection equipment, Power supplies and controllers, 45896 RhB Container car plus other items. Conditions: Fair to Good Plus

**Estimate:** £80-100



**Lot No. 561**

LGB/Playmobil G Gauge track and pointwork - to include platform components, Curved & Straight track sections Plus pointwork. Conditions: Generally Fair to Good.

**Estimate:** £70-90



**Lot No. 562**

Lehmann Toy Train G Scale group of 5x Factory Weathered Green Coaches and Vans to include 2x Ref. 93401 2nd Class Coaches and 3x Ref. 94257 Covered Vans. Conditions are Generally Good Plus to Excellent in Good boxes (some slight damage to boxes).

**Estimate:** £50-70



**Lot No. 563**

Lehmann Toy Train G Scale group of 4x Ref. 94060 Stake Wagons. Conditions are Generally Good Plus to Excellent in Good boxes (some slight damage to boxes).

**Estimate:** £40-50



**Lot No. 564**

Lehmann Toy Train G Scale group of 6x Wagons to include Ref. 94140 BP Green Tanker Wagon plus others (see photo). Conditions are Generally Good Plus to Excellent in Good boxes (some slight damage to boxes).

**Estimate:** £60-80



**Lot No. 565**

LGB G scale pair of Ref. 30700 2nd Class Balcony Coaches. Conditions are Good Plus to Excellent in Good to Good plus boxes.

**Estimate:** £80-100



**Lot No. 566**

LGB G Gauge catalogue Ref. 21900 Red 0-4-0 Diesel Shunter No. 21900. Condition is Excellent to Excellent Plus in Good box.

**Estimate:** £60-80



**Lot No. 567**

LGB G Scale group of 3x Wagons to include 2x Ref. 41410 OEG Grey Hopper Wagons No. 4141 plus others (see photo). Conditions are generally Excellent in Good Plus boxes.

**Estimate:** £60-80



**Lot No. 568**

LGB G Scale group of 3x Wagons to include 2x Ref. 410060 Deutsch Reichsbahn Brown 4-Wheeled Gondola Wagons plus others (see photo). Conditions are generally Good to Excellent (some signs of use) in Good boxes.

**Estimate:** £60-80



**Lot No. 569**

Aristocraft G Gauge catalogue No. ART-23201 EMD Class 66 Diesel Locomotive EWS No. 66135. Conditions: Mostly Good, One coupling is missing along missing some windscreen wipers, some damage to handrails, in styrene case unboxed.

**Estimate:** £140-160



**Lot No. 570**

Hornby (GB) 3.5" Gauge Ref. G100 Live Steam Rocket and Ref. G102 sectional track to make an overall length of 25'. The Locomotive has been fired. Conditions are evidently used but in a Good to Good Plus (unchecked for completeness) in Good boxes.

**Estimate:** £80-110



**Lot No. 571**

Markie Road Locomotive 1/10th Scale Traction Engine - Appears to be mechanically complete but unchecked. Steering chain is damaged but could be repaired. Appears to be missing some detailing features and lining plates. Wooden canopy is partially finished with LEDs lining the underside of the canopy, there are no physical attachment points for the roof to the engine. No boiler certificate is present. Contact for Delivery information or Collection Only due to weight - Just under 16 kg.

**Estimate:** £200-400



**Lot No. 572**

Aster or Similar Gauge 1 spirit-fired steam model of the LNWR Jumbo 2-4-0 Locomotive No. 790 "Hardwicke" and three-axle Tender, stamped 210/220 under tender base, fitted with two-wick spirit lamp and internally-fired boiler, safety valve, pressure gauge, regulator and blower, sprung chassis with inside frame twin double-acting cylinders and slip eccentric reverse, the tender with fuel and water tanks, hand pump, filler and valve, finished in L&NWR lined black. Conditions: Excellent to Excellent Plus in Homemade wooden transport case.

**Estimate:** £300-500



**Lot No. 573**

Cheddar Models LTD Gas Fired No12 Locomotive and Tender - With Battery pack and receiver pack to servo, this has been fired, issued with boiler test certificate. with imitation wooden tender load. and wooden transport case. Conditions: Generally Excellent to Excellent Plus.

**Estimate:** £100-140



**Lot No. 574**

3 1/2 inch Gauge of unknown origin LMS Stanier Jubilee Live Steam locomotive - In need of some repair work and cleaning up, Has been fired, missing its fire grate. No boiler certificate present. Conditions: Generally Fair to Good. Collection Only due to weight.

**Estimate:** £200-240



**Lot No. 575**

Wilesco D409 Traction Engine - Has been fired Gas powered Live Steam traction engine with dynamo  
Conditions: Excellent to Excellent Plus.

**Estimate:** £80-100



**Lot No. 576**

Mamod TE1a Traction Engine with Trailer - from 1981, (Date stamp in box lid) has funnel, steering rod & Fuel, missing steel spring driving belt and fuel holder. booklets are also included. Paint of wheels is coming away and water glass is fogged. Conditions: Generally Fair to Good.

**Estimate:** £60-80



**Lot No. 577**

Static OO Scale Display Locomotives - to include Flying Scotsman, Pacific Chapelon Nord & others.  
Conditions: Good Plus to Excellent.

**Estimate:** £20-30



**Lot No. 578**

OO Locomotive, Railbus and Coach Parts and Spares. DCC Chips (Untested for Operation), Motors, Mechanisms, Wheels, Parts For Multiple Railbuses and Coaches for Spares or Repair. Conditions Are Fair to Good.

**Estimate:** £30-40



**Lot No. 579**

OO Assortment of Buildings, Trackside, Platforms etc. Conditions Are Fair to Good.

**Estimate:** £30-40



**Lot No. 580**

N Gauge Buildings Trees and Scenics; Large Assortment of Trees and Foliage, with Some Woodland Scenics Items Plus Others. Conditions: Generally Good to Good Plus

**Estimate:** £30-40



**Lot No. 581**

Peco Lectrics Point Motors and Accessories Group; Point Motors PL-10E x 19, PL-10 x 5 and PL-10W x 1, PL-15 Twin Microswitch x 7, PL-9 Mounting Plates x 7, PL-13 Accessory Switch x 9, PL-12 Adaptor Base x 3, PL-16 Turnout Switch x 2, PL-18 Studs & Washers x 1, PL-40 Wheel Cleaning Brush & Scraper x 2 and SL-337 N Gauge Re-railer. Plus 5 x PL-10 Used or out of Packet. Conditions Are Otherwise Excellent in Fair to Good Packaging.

**Estimate:** £50-60



**Lot No. 582**

Peco Lineside, Gaugemaster, Eckon and Cockrobin Group. Including; NB-45 Flexible Field Fencing x 5, NB-27 and 68 Platform Edging and Ramps (2 of Each), NB-9/14/16 Structure Kits, Gaugemaster PM1 Point Motors x 4, Eckon ESN3 Colour Light Signal x 2 and ES2H Signal Kit, Cockrobin Signal Kits/Reed Switches and Magnets, Plus Others. Condition s Are Good to Excellent in Fair to Good Packaging.

**Estimate:** £50-60



**Auction E069**  
**Model Train Auction - Day 1 on 30 July 2025**



**Lot No. 583**

N Gauge Trackside & Lineside Group. Including; Kestrel Designs, Ratio, P & D Marsh, Dornaplas, Knightwing, Herpa and Noch. Conditions Are Good to Good Plus in Fair to Good Packaging. See Photo.  
**Estimate:** £50-60



**Lot No. 584**

Large Group of 00 Steam and Diesel Mechanisms for Spares or Repair. Various Mechanisms, Bodies and Bagged Spares for Servicing or Repairing Model Railways. Conditions Are Poor to Fair, See Photos.  
**Estimate:** £30-40



**Lot No. 585**

Lineside & Scenics Group for 00 Gauge. Featuring; Wills, Skaledale, Ratio, Peco, Knightwing, Noch etc. Conditions Are Fair to Good. Unchecked for Completeness, See Photos  
**Estimate:** £30-40



**Lot No. 586**

Large Group of Control Equipment, Spare Parts, N Gauge Stock Kits etc. Including Bachmann Magnum DC Controller, Hammant & Morgan S.M.3 Point Motors, Minitrix Electrical Accessories and Bachmann N Gauge American Stock Cars. Plus Others Including A Slot Car System. See Photos.  
**Estimate:** £30-40



**Lot No. 587**

Trackside and Scenery Group. Including; Hornby Inclines. Faller, Metcalfe and Peco Kits. Skaledale Granite Walling, Javis and Riko Scatters. Plus Unboxed, Unpainted Airfix Civilians. See Photo.  
**Estimate:** £30-40



**Lot No. 588**

Otaki Pair of 1:50 Steam Locomotive unbuild and part built Kits comprising of Ref. Ot 5-4-1800 Class E10 2-10-4 (part built) and Ref. Ot-5-2-1800 Class C62 4-6-4 Locomotive (unbuilt). Conditions are Good to Excellent (unchecked for completeness or correctness) in Fair to Good boxes.  
**Estimate:** £20-30



**Lot No. 589**

A small collection of painting tools include a Bow Pen and Paint Brushes plus others (see Photo). Conditions are Fair to Good in Good Box (box is incorrect)  
**Estimate:** £10-20



**Lot No. 590**

Slaters, 43two1 Models and Similar O Gauge mixed group of Wagon Kit, Wagons Kit Parts, Wheels, Motors and Gear boxes to include 2x 7L001 Mashima Motors with Spur Drive Gear Boxes. Conditions are Good to Excellent in Good boxes.  
**Estimate:** £70-90

## Auction E069 Model Train Auction - Day 1 on 30 July 2025



### Lot No. 591

Marklin HO Scale large from of Boxed and unboxed Sectional 3-Rail Track and Accessories to include 4x Ref. 5202 Electrically Operated Left Hand and Right Hand Points plus others (see photo). Conditions are generally Good to Excellent in Good Boxes.

**Estimate:** £70-90



### Lot No. 592

Trix-Twin and Hornby Dublo group of Sectional 3-Rail Track. Condition is Poor to Fair with Rust and Encrusted dirt on Track so would require cleaning or suitable for spares and repairs.

**Estimate:** £10-20



### Lot No. 593

Vollmer, Kibri and Similar HO Scale group of unbuilt Buildings kits to include 2x 5754 3-Road Locomotive Roundhouse Shed plus others (see photo). Conditions are Good to Excellent (unchecked for completeness or correctness) in Good boxes.

**Estimate:** £50-70



### Lot No. 594

Tri-ang, Jouef and Similar OO Gauge group of 12x Kitbuilt and Ready to Run Locomotive, Wagon and Coaches to include Tri-ang Hornby R.751 BR Green English Electric Type 3 No. 6830, 2x CDK R.381 BR Maroon Sleeping Coach Twin Packs plus others (see photo). Conditions are Good to Excellent (kit built items are built to a Good standard and are 2 per box) in Good boxes.

**Estimate:** £60-80



### Lot No. 595

Peco, Superquick and Similar OO Gauge group of 24x boxed and unboxed track, Card Building Kits and Accessories to include SI-90X Double Slip Pont plus others (see photo). Conditions are generally Good to Excellent (unchecked for completeness or correctness) in Good boxes.

**Estimate:** £40-60



### Lot No. 596

Frateschi HO Scale New Zealand outlined group of 1x Locomotive and 3x Coaches to include Ref. 3172 -5454 KiwiRail GE-U-20-C NZR 'DVX' Class Locomotive No. 5454 plus others (see photo). Conditions are Generally Good Plus to Excellent in Good boxes.

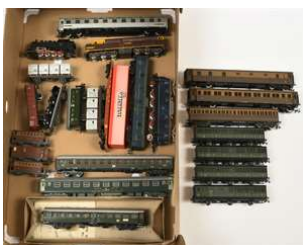
**Estimate:** £60-80



### Lot No. 597

Hornby-Dublo and Similar group of unboxed Locomotives, Wagons, Coaches and other Railway Related items (see photo). Conditions are Good to Excellent (some ware and chipping on paintwork).

**Estimate:** £80-100



### Lot No. 598

Jouef, Rivarossi, Kitbuilt and Similar HO Scale group of 21x Steam, Diesel & Electric Locomotives, Coaches and Wagons plus 3x Liliput HOe Scale Coaches (see photo). Conditions are generally Good to Excellent (one kitbuilt items built to a Good Standard).

**Estimate:** £50-70

**Auction E069**  
**Model Train Auction - Day 1 on 30 July 2025**



**Lot No. 599**

Trix Twin OO Gauge group of 3-rail 6x unboxed Locomotives & Coaches (see photo). Conditions are Fair to Good.

**Estimate:** £40-60



**Lot No. 600**

Rokal and Similar TT Gauge group of Locomotives, Coaches, Track and other accessories to include Rokal 2-4-2T Germany Outline Steam Locomotive No. 71003 plus others (see photo). Conditions are generally Good to Good plus in Good boxes.

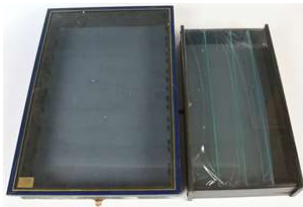
**Estimate:** £20-30



**Lot No. 601**

Hornby (GB & China), Metcalfe and Similar Large group of Buildings and Accessories built to a Good standard (see photo). Conditions are generally Poor to Good which signs of damage and ware all items are unchecked for completeness and some cleaning required.

**Estimate:** £40-60



**Lot No. 602**

Pair of display Cabinets one measuring approx. 54cm by 24cm and 9cm and the other is measuring 64cm x 43cm x 8cm. Conditions are fair the smaller display cabinet has some damage to one side and the larger requires shelves to complete and some cleaning required. Please note there is glass contained within items.

**Estimate:** £10-20



**Lot No. 603**

Battery Operated Christmas Train set approximately to O Gauge. Conditions is Poor to Fair, cleaning is required and tarnishing and ware on box.

**Estimate:** £10-20



**Lot No. 604**

Hornby (GB) Tri-ang and Similar large group of unboxed OO gauge Wagons (see photo). Conditions are Fair to Good Plus.

**Estimate:** £60-70



**Lot No. 605**

Hornby (GB), Triang, Vau-pe and Similar OO and HO Scale unbuilt kits, track and lineside accessories to include Vau-Pe Ref. 8116 Plastic Factory Kit Plus others (see photo). Conditions are Fair to Good with cleaning required in Poor to Good boxes.

**Estimate:** £20-30



**Lot No. 606**

Jarvis, Busch and Similar OO/HO Scale mixed group of figures, Accessories and Scenic to include Jarvis Ref. JXGST Extra Fine Ballast Chippings (see photo). Conditions are Good to Excellent (some items have been used with opened packaging) in Fair to Good boxes and packaging.

**Estimate:** £50-70



**Auction E069**  
**Model Train Auction - Day 1 on 30 July 2025**



**Lot No. 607**

Mainline, Hornby (GB) and Similar OO Gauge and Lima HO Gauge group of 7x Boxed and Unboxed Locomotives to include Mainline Ref. 954-154 LNER Green N2 0-6-2 Locomotive plus others and 1x unboxed Hornby (GB) 910 Power Controller (see photo). Conditions are Fair to Good (Controller is untested) in Good boxes.

**Estimate:** £40-50



**Lot No. 608**

Trackside, Base-Toys and Similar mixed group of Boxed Vans and Lorries, part built kits and other Accessories to include Trackside (1:76 Scale) Ref. DG111002 LNER Blue Sentinel Ballast Box with Low Loader and Gun Barrel Load plus others (see photo). Conditions are Poor to Good Plus in Good boxes.

**Estimate:** £20-30



**Lot No. 609**

Hornby (China) LMS Coronation Blue and Silver Liveried items including 1x Princess Coronation Steam Locomotive No. 6220 "Coronation plus Tender & 4x Carriages (see photo). Condition are Good to Good Plus (Glazing loose on Steam Locomotive).

**Estimate:** £50-60



**Lot No. 610**

Hornby (GB & China) and Bachmann OO Gauge group of 14x unboxed BR Era Coaches (see photo). Conditions are generally Good to Excellent with 3x Coaches in protective polystyrene holders.

**Estimate:** £60-80



**Lot No. 611**

Tri-ang, Hornby (GB) OO Gauge, Lima HO Gauge and similar large mixed group of unboxed wagons and coaches (see photo). Conditions are Poor to Good.

**Estimate:** £60-80



**Lot No. 612**

Model Railway Controllers and Transformer Group; 2 x Gaugemaster 100M (1 Boxed), Gaugemaster Series E Unboxed, Gaugemaster Model W Handheld (Unboxed), Hornby HM 2000 Boxed and Alumasc Transformer. Conditions Are Good to Good Plus. (6)

**Estimate:** £40-50



**Lot No. 613**

Hornby (China & GB), Tri-ang and Similar mixed group of OO Gauge sectional track including Curves, Points and Straights plus others (see photo). Conditions are Poor to Good with evidence of tarnishing and rusting on rails and some damage to the sleepers of some track.

**Estimate:** £50-70



**Lot No. 614**

Collection of Railway Related Books , DVD's and Manufacturers Catalogues. To Include; J.H. Russell Great Western Coaches (2 Volumes), Histories of Hornby and Hornby Dublo, Catalogues from Hornby, Bachmann and Lima. Railway DVD Box Sets and Signage. See Photo.

**Estimate:** £20-30

## Auction E069 Model Train Auction - Day 1 on 30 July 2025



### Lot No. 615

Hornby (China & GB) , Tri-ang, Peco and Similar OO Gauge large mixed group of Buildings, Scenic, Figures, Cars and Electrical and Accessories (see photo). Conditions are generally Poor to Excellent (items are untested and most items will require cleaning).

**Estimate:** £50-60



### Lot No. 616

Peco Streamline and Other Code 100 Plain OO Track; Peco Code 100 Concrete Sleeper Flexible track and Wooden Sleeper Flexible and Rigid Track, 16 Lengths in Fair to Good Condition. Plus 2 Lengths N Gauge Code 55 Wooden Sleeper Flexible Track In Fair to Good Condition.

**Estimate:** £30-40



### Lot No. 617

Hornby (GB & China), EFE Rail and Similar OO Gauge and Bachmann HO Scale group of Electric and Static Locomotives, Wagons and Accessories including London Underground Stock and Bachmann Ref. 46202 "Gandy Dancer" (see photo). Conditions are generally Good to Good Plus in Good boxes.

**Estimate:** £50-60



### Lot No. 618

T Gauge Locomotives & rolling stock - Assortment to include two kitbash chassis units and wagons and Diesel locomotive plus other items. Conditions: Excellent to Excellent Plus

**Estimate:** £50-70



### Lot No. 619

Noch HO Gauge Faller & Preiser Scenic items - large assortment to include 1001 Aircraft propeller motors, 17111 pallets and cable drums sets plus many unboxed bagged items. Conditions: Mostly Good to Good Plus.

**Estimate:** £50-70



### Lot No. 620

Brawa HO Gauge & Similar Scenic items - large assortment to scratch build plastic sheets, Evergreen Hill designs items, Langley Miniature Models items plus many other items. Conditions: Mostly Good to Good Plus.

**Estimate:** £50-70



### Lot No. 621

Hornby (China) & Lenz DCC Decoders - to include LE1000A, 7x R8249 8-pin 4-function 2-sided 0.5A (1A peak) decoder, all are untested. Conditions: Assumed Conditions: Near Mint to Mint.

**Estimate:** £50-70



### Lot No. 622

Noch HO Scale Preiser & Similar scenic items - to include plants, Noch 16767 Road Roller, Branchlines Etch brass bicycles, plus many other items. Conditions: Good Plus to Excellent

**Estimate:** £50-70

## Auction E069 Model Train Auction - Day 1 on 30 July 2025



### Lot No. 623

Brawa HO Scale & Similar electrical effects items - to include Viessmann 6089 lamps, Brawa 5223 Street lamps plus many other items and parts. Conditions: Generally Good Plus to Excellent.

**Estimate:** £50-70



### Lot No. 624

Kibri Faller HO Scale & Similar scenic items - to include Vollmer Loading Gauge, various road signage items and other items. Conditions: Generally Good Plus to Excellent, kits are unchecked for completeness.

**Estimate:** £50-70



### Lot No. 625

Preiser HO & N Gauge Noch items - Assortment of scenic detailing items, figures & animals. Conditions: Good Plus to Excellent.

**Estimate:** £50-70



### Lot No. 626

Roco (By Lenz) Digital control system - to include Multimaus & Maus2 Handsets along with 10751 Control Center boxes plus other items. Conditions: Fair to Good Plus with signs of use.

**Estimate:** £80-100



### Lot No. 627

Noch Soundstation systems - to include 60200 & 60260 Synchro Sound Box. Conditions: Appears Excellent to Excellent Plus in Excellent Boxes.

**Estimate:** £50-70



### Lot No. 628

Faller HO Scale road system - to include A.M.S. Race track equipment, ramps, positive camber curves plus other items. Conditions: Generally Fair to Good.

**Estimate:** £50-70



### Lot No. 629

Marklin Mini-club 0232 track planning parts - to include diagrammatic planning parts with points, curves, Straights & crossings plus bridge stanions. Unchecked for completeness. Conditions: Appears Good Plus to Excellent.

**Estimate:** £40-60



### Lot No. 630

Roco HO Plus other Scales and Gauge Detailing packs and spares - to include BEMO Lamps for HOe, 51L Models Handwheels, Gunther HO transfers plus many other items. Conditions: Generally Fair to Good Plus.

**Estimate:** £50-70



**Auction E069**  
**Model Train Auction - Day 1 on 30 July 2025**



**Lot No. 631**

Faller HO/OO Scale & Similar model kits - to include 13984 building yard scene, Langley Models Robey Tri-tandem Steamroller Plus other items. Unchecked for completeness. Conditions: Generally Good to Good Plus.

**Estimate:** £70-90



**Lot No. 632**

Busch HO Scale Brekina & Similar automotive vehicles - large group of some 150 plus cars, vans etc plus spare parts. Conditions: Good to Good Plus.

**Estimate:** £70-90



**Lot No. 633**

Hornby (GB) OO Gauge 8F locomotive plus other items - to include R.324 Plus large assortment of scenic accessories including scatter mats, bagged scatter material and Coopercraft detailing items plus other parts. Conditions: Mostly Fair to Good.

**Estimate:** £40-60



**Lot No. 634**

Bemo and Similar HOe/HOm and 1:87 Scale group of Spares and Other Accessories. Conditions are generally Good to Excellent (unchecked for completeness) in Good boxes and packaging (some have been opened).

**Estimate:** £20-30



**Lot No. 635**

Hornby, Faller and Similar mixed group of OO Gauge & HO Scale unbuilt Building kits, Accessories and 1x wagon to include R.282 HST Loco Shed plus others (see photo). Conditions are generally Good to Good Plus (unchecked for correctness or completeness) in Good boxes. Please note some items are in incorrect boxes. 17x items in total.

**Estimate:** £50-70



**Lot No. 636**

Minicraft & Lehmann's 'Gnomy' mixed items including 5x Ref. 970 Blue & White Trolley Cars and Similar (see photo) also included is a Minicraft unbuilt kit Ref. 11209 . 31 Items in total. Conditions are generally Good Plus to Excellent in Good boxes.

**Estimate:** £60-70



**Lot No. 637**

Fleischmann group of 20x boxed and unboxed Control Desk Point Switches. Conditions are Good Plus to Excellent in Good boxes.

**Estimate:** £50-60



**Lot No. 638**

Hornby, Morley Controllers and Similar mixed group of controllers and Transformer Units to include Morley Controllers Vesta Zero Two (N Gauge) plus others (see photo). Conditions are generally Fair to Good (all items are unchecked for working order).

**Estimate:** £40-60

**Auction E069**  
**Model Train Auction - Day 1 on 30 July 2025**



**Lot No. 639**

Graham Farish, Manson, Gaugemaster and Similar group of boxed and unboxed controllers and Power Supplies to include a Manson EP-603 0-30V 2.5A Desktop Power Supply, Antex UE82060 200w Soldering iron mains plug plus others (see photo). Conditions are generally Good to Excellent (all items untested) in poor box.

**Estimate:** £70-90



**Lot No. 640**

Peco and Similar large selection of Electrical, Hardware and Model Railway Accessories to include point motors, terminal blocks, magnets, connectors and tools (see photo). Conditions are Fair to Good Plus in Fair Packaging.

**Estimate:** £50-70



**Lot No. 641**

Corgi and Similar mixed group of Railway Related items to include Corgi produced for Model Zone (Limited Edition) 1:50 Scale Static Resin Model of Flying Scotsman no. 627 of 1500 built plus others (see photo). Conditions are fair to Good Plus in Good boxes.

**Estimate:** £20-30



**Lot No. 642**

The Great British Locomotive Collection - Large group of 34 static display models to include LSWR T9, LNER 'Flying Scotsman', LNER B12, plus many others. Conditions: Generally Good to Good Plus, have been on display previously.

**Estimate:** £40-60



**Lot No. 643**

TT Zeuke TT Gauge No.545 746 Passenger Train set containing Bo-Bo CSD blue and cream livery type E499 Overhead Electric Loco No.E499035, 2 x CSD green livery Composite Coaches Plus set 159/3 with 159/51 tank locomotive BR 81 -013 DR / III, 159/54 Off. Freight car Om with brake rods 41-08-47 DR / III without cargo, 159/57 Official freight car Om with brake linkage 41-08-47 DR / III with tarpaulin "Zeuke-Bahnen" and 159/59 Gated freight car G with brake linkage 16-01-57 DR / III, within both sets, track is not present. Conditions: Generally Good Plus to Excellent in a Fair to Good box with Good picture.

**Estimate:** £80-100



**Lot No. 644**

TT Gauge TT Zeuke Sets - set 159/7 with Contents of 159/76 diesel locomotive V 200 -027 (DR), 159/79 Express train carriage AB4üpe 215-601 Bln. DR, 159/79 Express train carriage AB4üpe 215-601 Bln. DR, 159/79 Express train carriage AB4üpe 215-601 Bln. DR plus set 159/11 Contents of 159/77 Passenger locomotive with tender BR 23 -1003 DR, 159/71 passenger car Bi 30 (Cie) with brake linkage 53 091 Req. DR, 159/71 passenger car Bi 30 (Cie) with brake linkage 53 091 Req. DR, & 159/71 passenger car Bi 30 (Cie) with brake linkage 53 091 Req. DR. Conditions: Excellent to Excellent Plus in Good to Good Plus picture boxes.

**Estimate:** £80-100



**Lot No. 645**

TT Zeuke or similar Plus Peco track - to include four SL-1200 yard lengths of flexi-track and numerous sectional track and pointwork for TT gauge. Conditions: Fair to Good

**Estimate:** £30-50

## Auction E069

### Model Train Auction - Day 1 on 30 July 2025



#### Lot No. 646

TT Hobby (Zeuke TT Bahnen) Locomotives & Rolling stock - in include two 03732 2-part double-decker unit Bipa 50 51 25-18 778-8, 545/755 electric locomotive E 42 -018 DR/III green plus an array of wagons and a transformer unit with EU plug (untested). Conditions: Generally Good to Good Plus

**Estimate:** £50-70



#### Lot No. 647

Police traffic signals and Diesel heater lamps - a pair of Police Traffic signal batons, plus a Hurricane style lamp and three diesel fueled heaters, plus vehicle badge from German Trailer manufacturer.

Conditions: Fair to Good

**Estimate:** £40-60



#### Lot No. 648

Small Group Of EFE and Corgi Buses and Commercial Vehicles. EFE AEC Regent V West Yorkshire, Bristol FLF Lodekka NBC Cumberland, 2 x Mercedes/Reeve Burgess Minibus City Line/Thamesway. 2 x Atkinson Artic Car transporter/Box. 2 x Corgi Volvo Olympian KMB Dragon Boat and 2 x Corgi Volvo Olympian Friends of KMB. Conditions Are Excellent in Good Boxes. (10)

**Estimate:** £30-40



#### Lot No. 649

Atlas Edition "Eddie Stobart" Group of Boxed Vehicles. Comprising Scania Irizar Coach, Modern Artics with Trailers from MAN/Scania and Volvo. Modern Rigid from Ford/MAN/Scania and Classic AEC Rigid & Atkinson Border Flatbed. Vehicles Have Been On Display and Are Fastened to Dusty Display Bases in Good Plus Boxes. (13)

**Estimate:** £30-40



#### Lot No. 650

Meccano pair of Items comprising of item No. 3 (Lid shows Windmill) and A3 Power Control Unit. Conditions are generally Good to Good plus (unchecked for completeness or correctness and untested) in Fair boxes.

**Estimate:** £20-30



#### Lot No. 651

Meccano or Similar Large qty of components. To include many flat strips, angle girders, wheels, grouped together in a self built wooden case. see photo. Conditions: Fair to Good.

**Estimate:** £40-50





**Lot No. 652**

Meccano No.7 Outfit - Containing Green and red parts factory stamped, showing some signs of use. Conditions: Mostly Good Plus to Excellent in Fair box, some tape has been used to attempt repairs on the lid corners.

**Estimate:** £40-60

**Total Number of Lots: 652**